

STATE OF ILLINOIS
DEPARTMENT OF TRANSPORTATION

F.A.I. N.T.E.	SECTION	COUNTY	TOTAL SHEETS	SHEET NO.
74	CM21-5008	MCLEAN	8	1
		ILLINOIS	CONTRACT NO. 70F05	

FOR INDEX OF SHEETS, SEE SHEET NO. 2
FOR SUMMARY OF QUANTATIES, SEE SHEET NO. 3

PROPOSED HIGHWAY PLANS

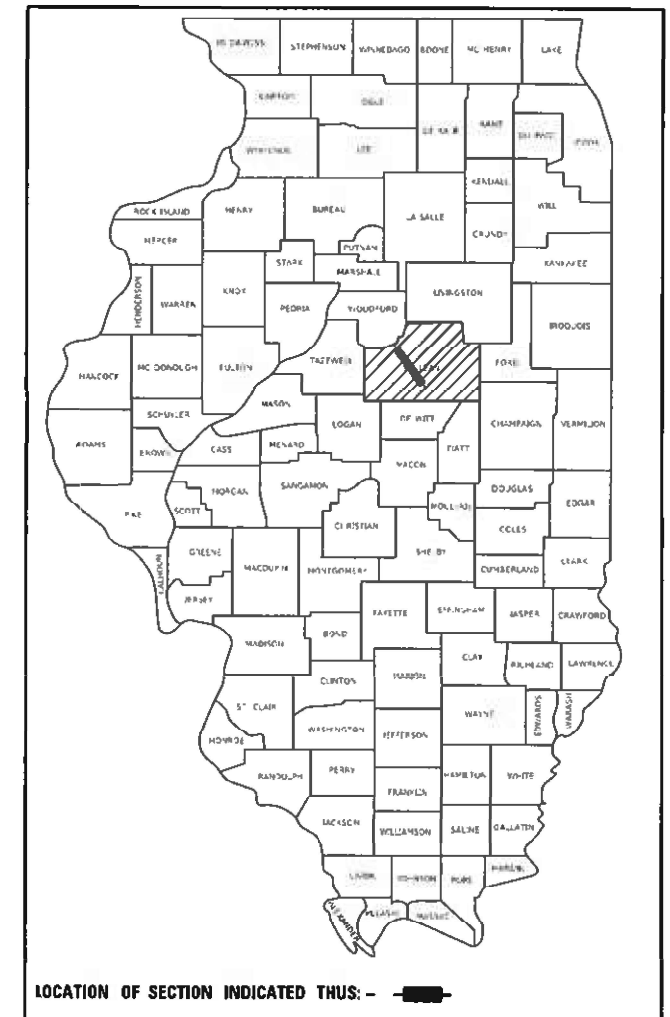
FAI ROUTE 74 (I 74)
SECTION CM21-5008
PROJECT
PATCHING
MCLEAN COUNTY

C-95-026-21

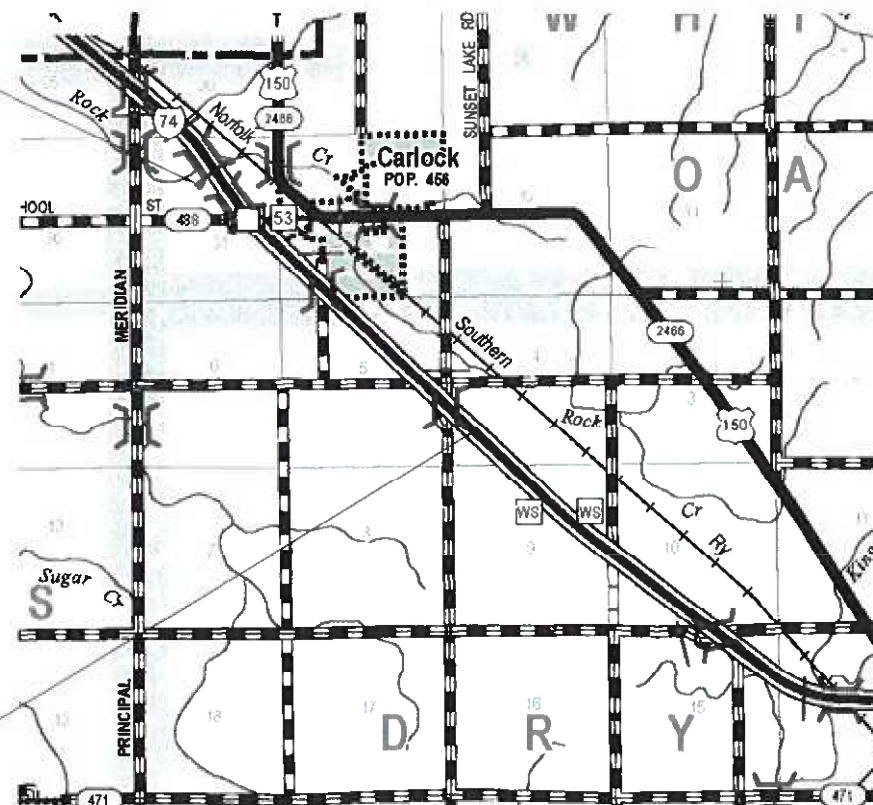
D-95-010-21

CURRENT TRAFFIC DATA
I-74 WOODFORD COUNTY LINE TO US 150
2020 ADT: 23,900
2030 ADT: 25,100
P.U. & P.C%: 80.1
SU%: 4.0
MU%: 15.9

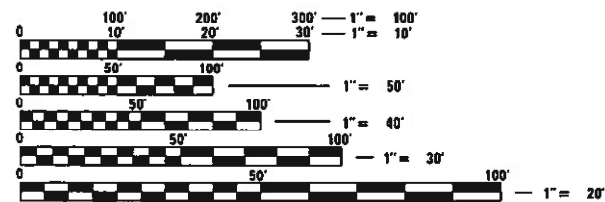
DESIGN DESIGNATION
INTERSTATE



SECTION CM21-5008
BEGIN STA. 1565 + 20



SECTION CM21-5008
END STA. 1668 + 30



FULL SIZE PLANS HAVE BEEN PREPARED USING STANDARD ENGINEERING SCALES. REDUCED SIZED PLANS WILL NOT CONFORM TO STANDARD SCALES. IN MAKING MEASUREMENTS ON REDUCED PLANS, THE ABOVE SCALES MAY BE USED.

J.U.L.I.E.
JOINT UTILITY LOCATION INFORMATION FOR EXCAVATORS
1-800-892-0123
OR 811 WHITEOAK TOWNSHIP

PROJECT ENGINEER: JASON STULTS
SQUAD LEADER: CLARE DIETZ
DESIGNER: MARGARET GENTRY
PHONE: 217-465-4181
CONTRACT NO. 70F05

GROSS LENGTH = 10,310.00 FT. = 1.953 MILE
NET LENGTH = 10,310.00 FT. = 1.953 MILE

STATE OF ILLINOIS
DEPARTMENT OF TRANSPORTATION

SUBMITTED 1113 2021
Kensila Harnettson
REGIONAL ENGINEER

March 19, 2021
Jack A. Elk
ENGINEER OF DESIGN AND ENVIRONMENT

March 19, 2021
Jason Stults
DIRECTOR OF HIGHWAYS PROJECT IMPLEMENTATION 13

PRINTED BY THE AUTHORITY
OF THE STATE OF ILLINOIS

INDEX OF SHEETS

SHEET NO.	DESCRIPTION
1	COVER SHEET
2	INDEX OF SHEETS
2	LIST OF HIGHWAY STANDARDS
2	GENERAL NOTES
3	SUMMARY OF QUANTITIES
4	TYPICAL CROSS SECTIONS
5	SCHEDULE OF QUANTITIES
6-7	CLASS A PATCHES (SPECIAL)
8	TEMPORARY RUMBLE STRIPS (SPECIAL)

GENERAL NOTES

NONE

HIGHWAY STANDARDS

STANDARD NO.	DESCRIPTION
000001-08	STANDARD SYMBOL, ABBREVIATIONS AND PATTERNS
001001-02	AREAS OF REINFORCEMENT BARS
001006	DECIMAL OF AN INCH AND OF A FOOT
701400-10	APPROACH TO LANE CLOSURES, FREEWAY/EXPRESSWAY
701401-12	LANE CLOSURE, FREEWAY/EXPRESSWAY
701901-08	TRAFFIC CONTROL DEVICES

NO COMMITMENTS

MODEL: \\MODEL\MNFs
FILE NAME: \\p14\mcom\m.dct\illinc\gov\PIWDOT\Documents\IDOT_Offices\District 5\Projects\0570F05\CADD\0570F05-RT-Cen\h05c.dgn

USER NAME = DietzCB	DESIGNED -	REVISED -
	DRAWN -	REVISED -
PLOT SCALE = 40,0000 * / in.	CHECKED -	REVISED -
PLOT DATE = 1/14/2021	DATE -	REVISED -

**STATE OF ILLINOIS
DEPARTMENT OF TRANSPORTATION**

**HIGHWAY STANDARDS, GENERAL
NOTES, AND INDEX OF SHEETS**

SCALE: SHEET 1 OF 1 SHEETS STA. TO STA.

F.A.J. RTE.	SECTION	COUNTY	TOTAL SHEETS	SHEET NO.
74	CM21-5008	MCLEAN	8	2
CONTRACT NO. 70F05				
ILLINOIS FED. AID PROJECT				

SUMMARY OF QUANTITIES

LOCATION OF WORK:

FAI 74 (I-74)

RURAL

INTERSTATE

STA. 1565+20 TO STA. 1668+30

MCLEAN COUNTY

FUNDING BREAKOUT:

100% STATE

CONSTRUCTION TYPE CODE:

0005

	CODE NO.	ITEM	UNIT	TOTAL QUANTITY	
	44213000	PATCH REINFORCEMENT	SQ YD	219.0	219
	44213200	SAW CUTS	FOOT	472.0	472.0
	44213204	TIE BAR 3/4"	EACH	153.0	153.0
	67100100	MOBILIZATION	L SUM	1.0	1.0
	70100800	TRAFFIC CONTROL AND PROTECTION, STANDARD 701401	L SUM	1.0	1.00
	70103815	TRAFFIC CONTROL SURVEILLANCE	CAL DAY	8.0	8.0
	70107025	CHANGEABLE MESSAGE SIGN	CAL DAY	20.0	20.0
	X1700117	CLASS A PATCH, TYPE I, 16 INCH (SPECIAL)	SQ YD	12.0	12.0
	X1700082	CLASS A PATCH, TYPE IV, 16 INCH (SPECIAL)	SQ YD	187.0	187.0
	X1700105	CLASS A PATCH, TYPE III, 16 INCH (SPECIAL)	SQ YD	20.0	20.0
	X2700001	TEMPORARY RUMBLE STRIPS (SPECIAL)	EACH	16.0	16.0
* DENOTES SPECIALTY ITEM					

MODEL: \\MODELNAME\$
FILE: \\NAME\$.prt
\\server\root\etc\illinois\gis\pwin\dot\documents\dot\office\district_3\project\0570F05\CAD\DATA\CAD\sheet\0570F05-PT-500.dgn

USER NAME = DietzCB	DESIGNED -	REVISED -
	DRAWN -	REVISED -
PLOT SCALE = 40.0000' / in.	CHECKED -	REVISED +
PLOT DATE = 1/14/2021	DATE -	REVISED +

**STATE OF ILLINOIS
DEPARTMENT OF TRANSPORTATION**

SUMMARY OF QUANTITIES

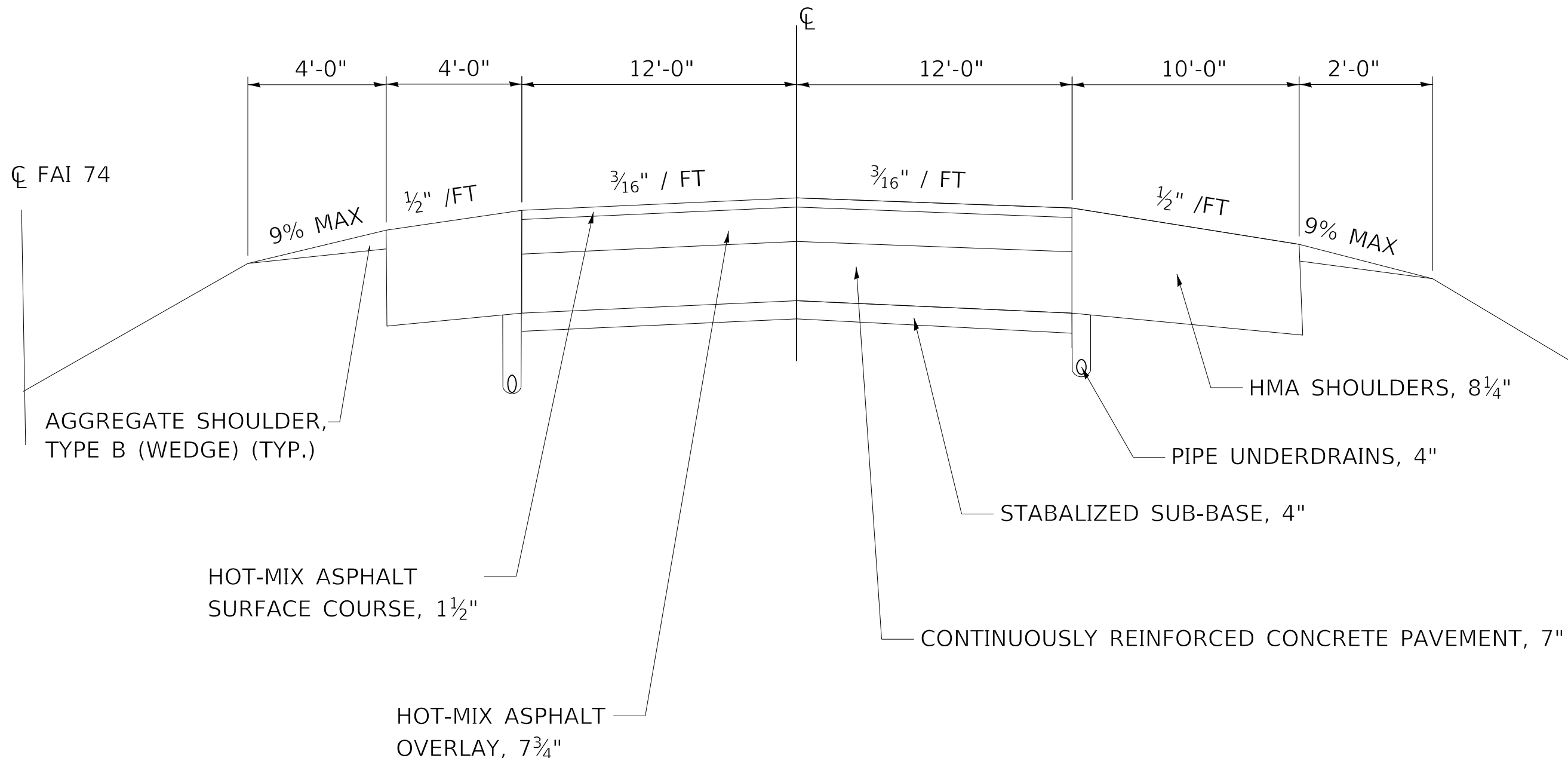
SCALE: SHEET 1 OF 1 SHEETS STA. TO STA.

F.A.I. RTE.	SECTION	COUNTY	TOTAL SHEETS	SHEET NO.
74	CM21-5008	MCLEAN	8	3
			CONTRACT NO. 70F05	
ILLINOIS FED. AID PROJECT				

EXISTING TYPICAL CROSS SECTION

F.A.I. 74

STATION TO STATION
1565+30 TO 1668+30



MODEL: I:\MODEL\MHFE... FILE NAME: ...

USER NAME = DietzCB	DESIGNED -	REVISED -
	DRAWN -	REVISED -
PLOT SCALE = 100,0000' / in.	CHECKED -	REVISED -
PLOT DATE = 1/14/2021	DATE -	REVISED -

STATE OF ILLINOIS
DEPARTMENT OF TRANSPORTATION

TYPICAL CROSS SECTION

SCALE: SHEET 1 OF 1 SHEETS STA. 1565+20 TO STA. 1668+30

F.A. RTE.	SECTION	COUNTY	TOTAL SHEETS	SHEET NO.
74	CM21-5008	MCLEAN	8	4
CONTRACT NO. 70F05			ILLINOIS FED. AID PROJECT	

SCHEDULE OF QUANTITIES

							#5000299	X1700105	X1700082	44213200	44213000	44213204		
							CLASS A PATCHES, 16 INCH (SPECIAL)			SAW CUTS	PATCH REINFORCEMENT	TIE BAR		
	STATION	DIR	LANE	LENGTH	WIDTH		TY I	TY III	TY IV			Transverse	Longitudinal	
				FT	FT	SQYD	SQYD	SQYD	SQYD	FT	SQYD	EACH	EACH	
	1623+60	EB	DL	40	12	53.33	0	0.00	53.33	104	53.33	22	13	
	1668+30	EB	DL	100	12	133.33	0	0.00	133.33	224	133.33	22	33	
RT W.L.	1565+20	WB	DL	6	6	4.00	4	0.00	0.00	24	4.00	10	0	
	1566+10	WB	DL	30	6	20.00	0	20.00	0.00	72	20.00	10	10	
RT W.L.	1566+80	WB	DL	6	6	4.00	4	0.00	0.00	24	4.00	10	0	
RT W.L.	1622+60	WB	DL	6	6	4.00	4	0.00	0.00	24	4.00	10	0	
TOTALS								12.00	20.00	186.67	472.00	218.67	97.00	56.00
USE								12.00	20.00	187.00	472.00	219.00	97.00	56.00

TEMPORARY RUMBLE STRIPS		
X2700001		
TEMPORARY RUMBLE STRIPS (SPECIAL)		
APPROX. LOCATION	LANE	(EACH)
± 1.5 MI BEFORE TAPER	EBDL	2
± 1.5 MI BEFORE TAPER	EBPL	2
± 3 MI BEFORE TAPER	EBDL	2
± 3 MI BEFORE TAPER	EBPL	2
± 1.5 MI BEFORE TAPER	WBDL	2
± 1.5 MI BEFORE TAPER	WBPL	2
± 3 MI BEFORE TAPER	WBDL	2
± 3 MI BEFORE TAPER	WBPL	2
TOTAL		16

CHANGEABLE MESSAGE SIGN	
70107025	
CHANGEABLE MESSAGE SIGN	
DESCRIPTION	(EACH)
EB I-74 ADVANCE NOTICE	3
WB I-74 ADVANCE NOTICE	3
EB DURING CONSTRUCTION, ± 1.5 MI BEFORE TAPER	7
WB DURING CONSTRUCTION, ± 1.5 MI BEFORE TAPER	7
TOTAL	20

MODEL: \\MODEL\NAME
 FILE NAME: \\P\ADMIN\CONTRACT\ILLINOIS\DOT\Documents\DOT_Office\Drawings\Projects\0570F05\PH-Schedule.dgn

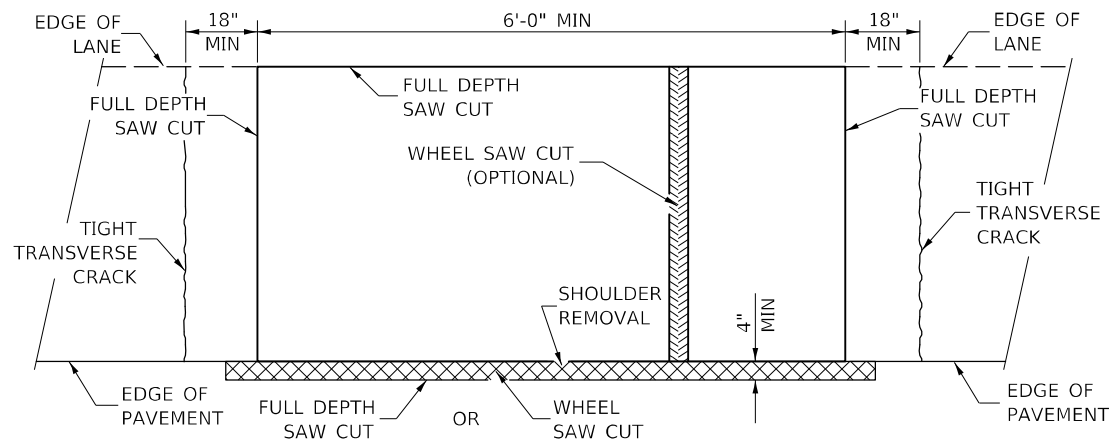
USER NAME = DietzCB	DESIGNED -	REVISED -
	DRAWN -	REVISED -
PLOT SCALE = 40,0000 * / in.	CHECKED -	REVISED -
PLOT DATE = 1/14/2021	DATE -	REVISED -

STATE OF ILLINOIS
DEPARTMENT OF TRANSPORTATION

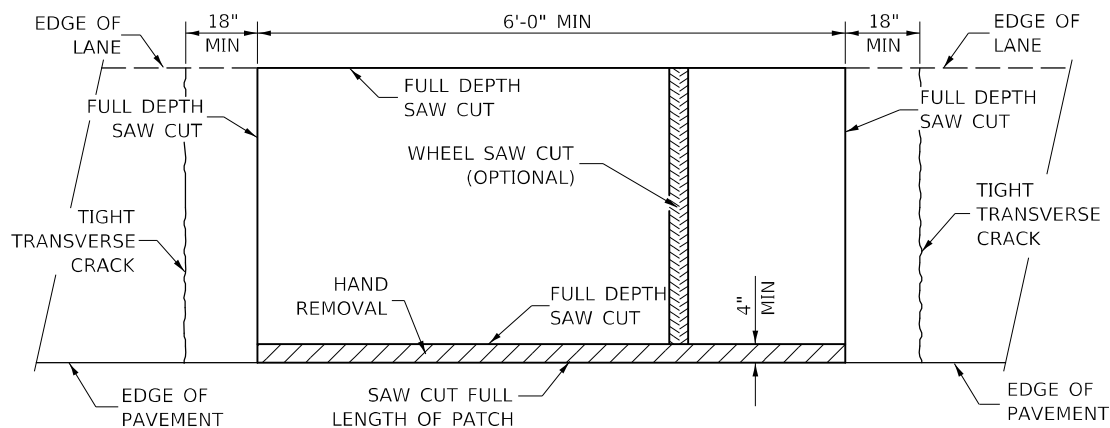
SCHEDULE OF QUANTITIES

SCALE: SHEET 1 OF 1 SHEETS STA. TO STA.

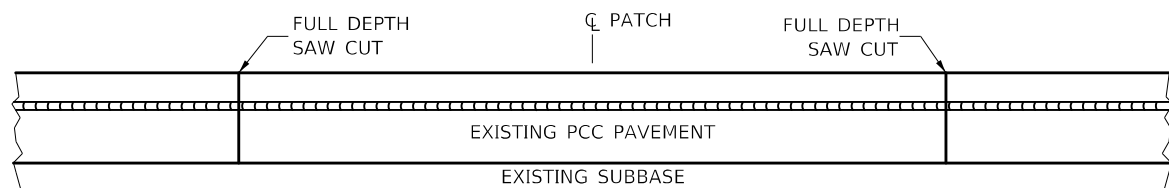
F.A.J. RTE.	SECTION	COUNTY	TOTAL SHEETS	SHEET NO.
74	CM21-5008	MCLEAN	8	5
CONTRACT NO. 70F05				
ILLINOIS FED. AID PROJECT				



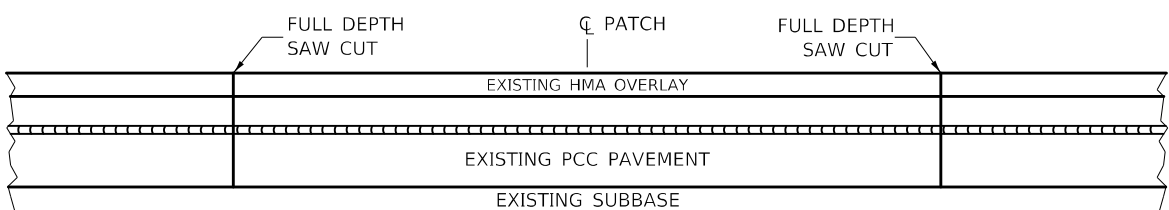
**PAVEMENT SAWING DETAIL
(HMA SHOULDER)**



**PAVEMENT SAWING DETAIL
(PCC SHOULDER)**

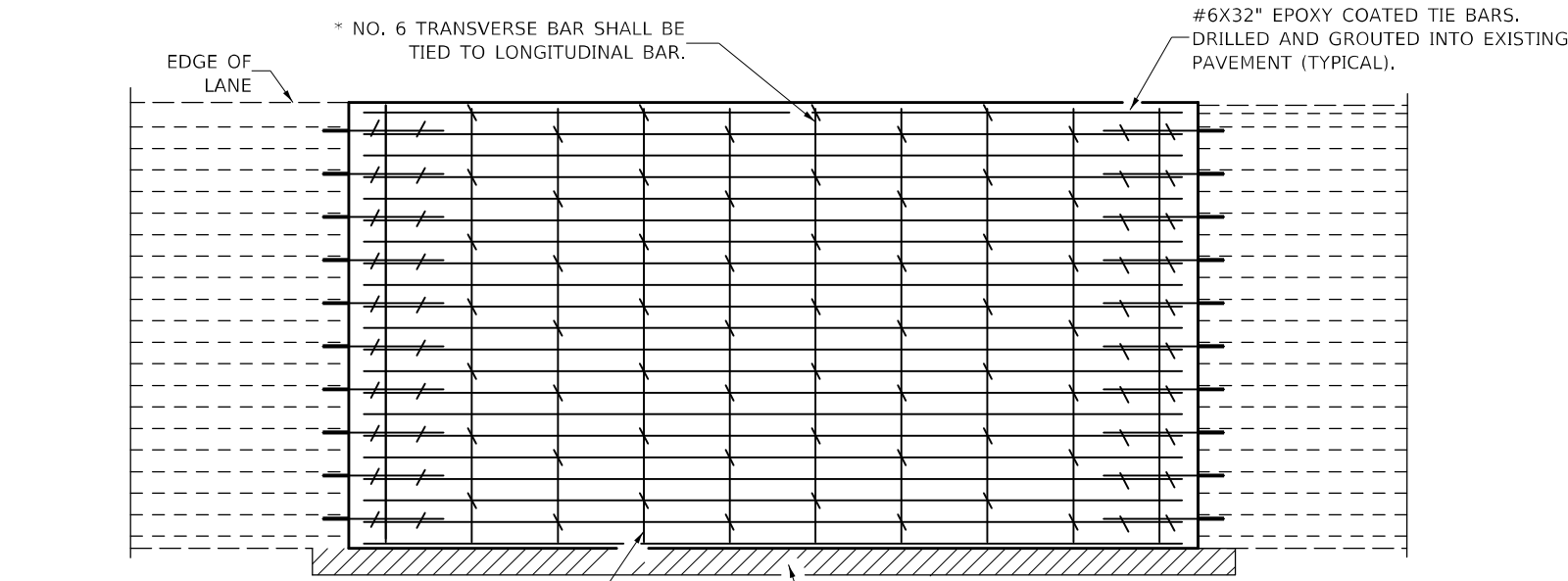


EXISTING PAVEMENT WITHOUT HMA SURFACE



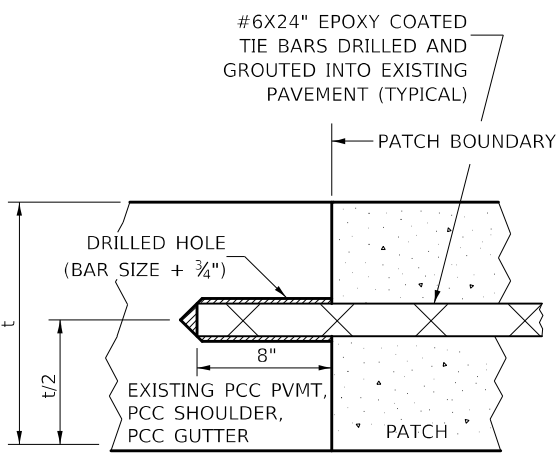
EXISTING PAVEMENT WITH HMA SURFACE

**PAVEMENT SAWING DETAIL FOR CLASS A PATCHING
(CRC PAVEMENT)**



TRANSVERSE REBAR SHALL EXTEND TO OUTER LONGITUDINAL REBAR WHILE PROVIDING A MINIMUM 3\"/>

PAVEMENT REINFORCEMENT DETAIL



LONGITUDINAL CONSTRUCTION JOINT

PATCHES MORE THAN 20' IN LENGTH SHALL BE TIED TO ADJACENT PAVEMENT, PCC SHOULDERS OR PCC CURB AND GUTTER WITH #6X24\"/>

NOTES:

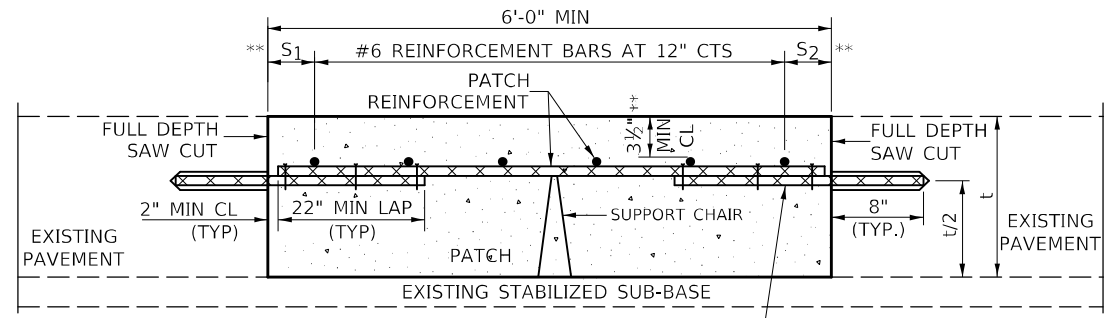
EXISTING LONGITUDINAL REINFORCEMENT SPACING; $\pm 6\frac{1}{2}$ \"/>

SPACING OF NEW LONGITUDINAL REINFORCEMENT AND NEW LONGITUDINAL TIE BARS SHALL MATCH SPACING OF EXISTING REINFORCEMENT AND SHALL BE TIED TOGETHER WITH A MINIMUM OF TWO TIES PER BAR.

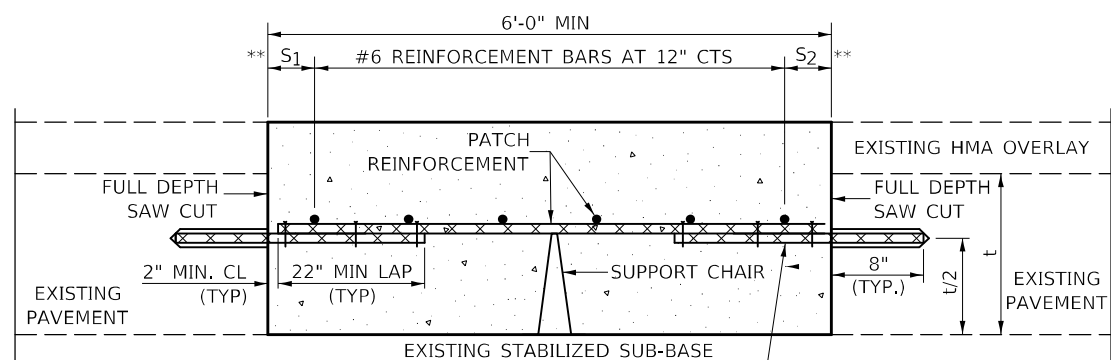
SUPPORT CHAIRS SHALL BE REQUIRED WHENEVER PATCH LENGTH EXCEEDS 6'-0\"/>

* EVERY THIRD INTERSECTION MUST BE TIED. WHEN THE MINIMUM CLEARANCE CANNOT BE OBTAINED WITH THE TRANSVERSE REBAR ON TOP, THEN THE TRANSVERSE REBAR SHALL BE TIED TO THE BOTTOM OF THE LONGITUDINAL REBAR.

** VARIABLES WHERE S_1 AND S_2 ARE $2\frac{1}{2}$ \"/>



WITHOUT HMA OVERLAY



WITH HMA OVERLAY

**PATCHING DETAIL FOR CLASS A PATCHING
(CRC PAVEMENT)**

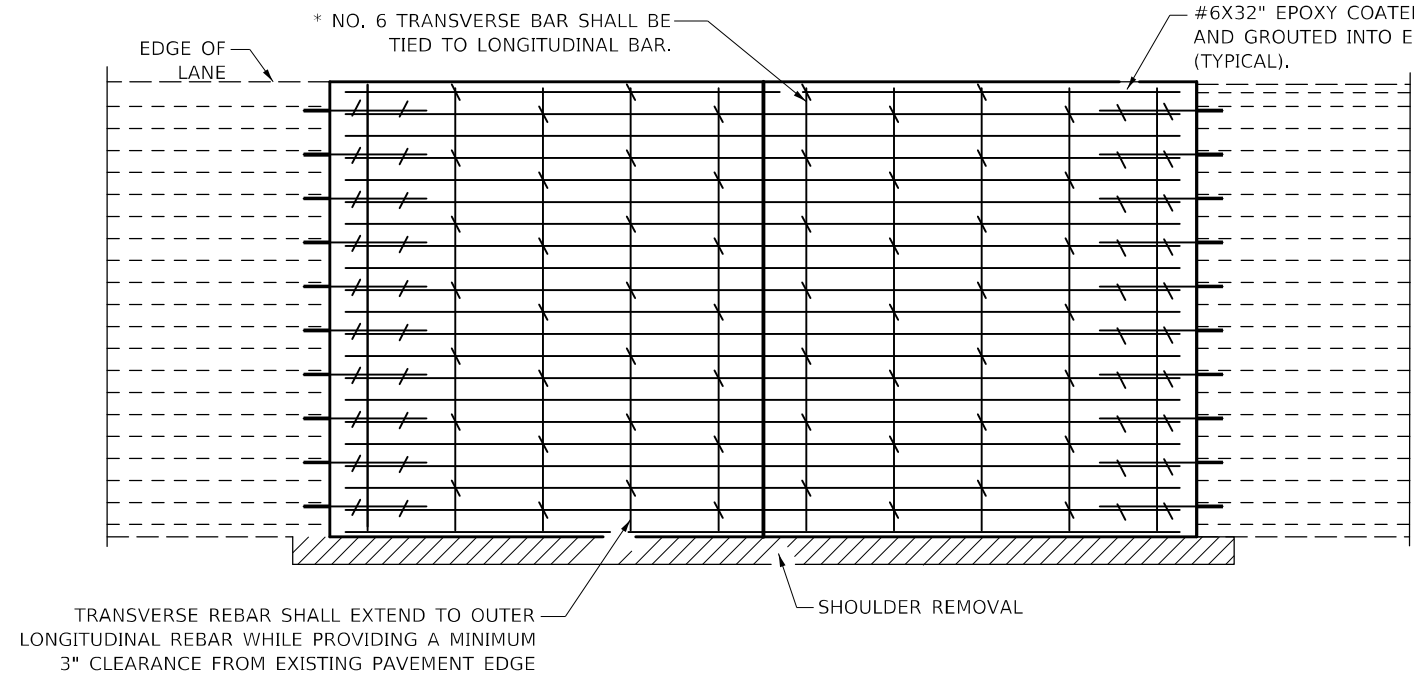
MODEL: \\MODEL\NAME: FILE: \\MODEL\... PROJECT: 70F03... OFFICE: DISTRICT 5... DATE: 1/14/2021

USER NAME = DietzCB	DESIGNED -	REVISED -
PLOT SCALE = 40,0000 * / in.	DRAWN -	REVISED -
PLOT DATE = 1/14/2021	CHECKED -	REVISED -
	DATE -	REVISED -

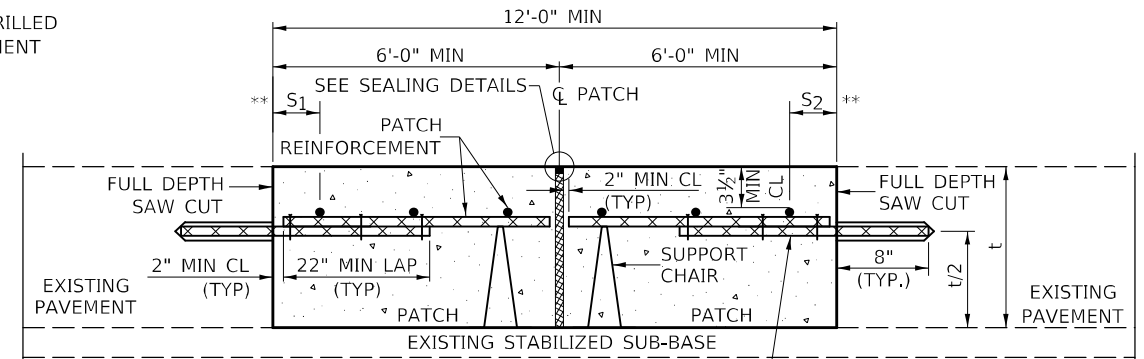
**STATE OF ILLINOIS
DEPARTMENT OF TRANSPORTATION**

CLASS A PATCHES (SPECIAL)
SCALE: NONE SHEET 1 OF 2 SHEETS STA. TO STA.

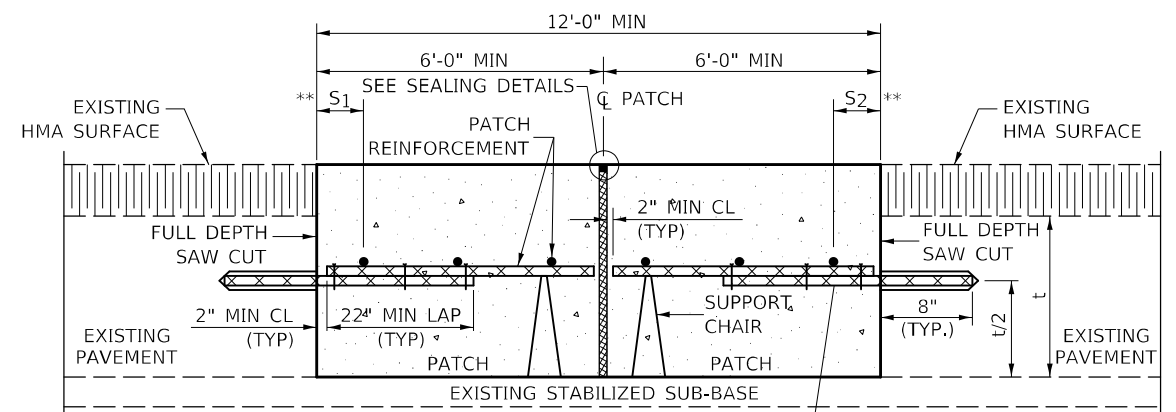
F.A.I. RTE.	SECTION	COUNTY	TOTAL SHEETS	SHEET NO.
VAR.	CM21-50DB	CHAMPAIGN	8	6
ILLINOIS FED. AID PROJECT			CONTRACT NO. 70F03	



PAVEMENT REINFORCEMENT DETAIL



WITHOUT HMA OVERLAY

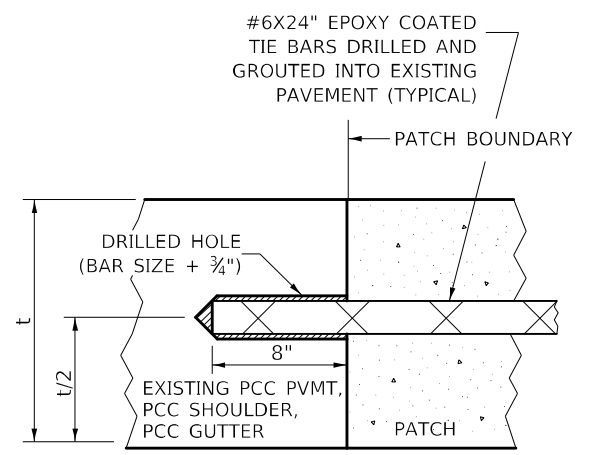


WITH HMA OVERLAY

CLASS A PATCH WITH EXPANSION JOINT

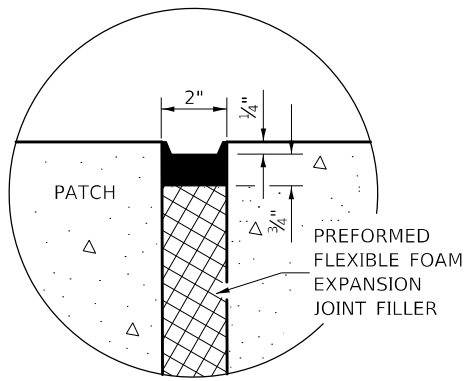
NOTES:

- EXISTING LONGITUDINAL REINFORCEMENT SPACING; $\pm 6\frac{1}{2}$ ".
- SPACING OF NEW LONGITUDINAL REINFORCEMENT AND NEW LONGITUDINAL TIE BARS SHALL MATCH SPACING OF EXISTING REINFORCEMENT AND SHALL BE TIED TOGETHER WITH A MINIMUM OF TWO TIES PER BAR.
- SUPPORT CHAIRS SHALL BE REQUIRED WHENEVER PATCH LENGTH EXCEEDS 6'-0"
- EVERY THIRD INTERSECTION MUST BE TIED. WHEN THE MINIMUM CLEARANCE CANNOT BE OBTAINED WITH THE TRANSVERSE REBAR ON TOP, THEN THE TRANSVERSE REBAR SHALL BE TIED TO THE BOTTOM OF THE LONGITUDINAL REBAR.
- VARIABLES WHERE S AND S ARE $2\frac{1}{2}$ " MIN. AND 12" MAX.

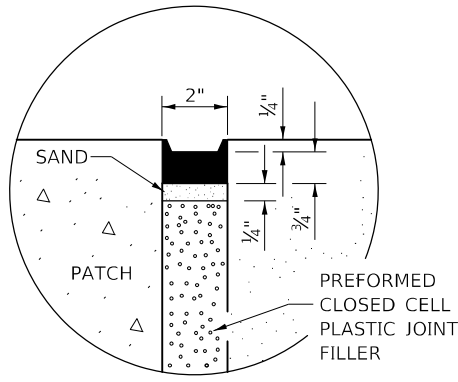


LONGITUDINAL CONSTRUCTION JOINT

PATCHES MORE THAN 20' IN LENGTH SHALL BE TIED TO ADJACENT PAVEMENT, PCC SHOULDERS OR PCC CURB AND GUTTER WITH #6x24" EPOXY COATED TIE BARS AT 36" CENTERS.



SEALING DETAIL



SEALING DETAIL

MODEL: I:\MODEL\MMFS FILE NAME: P:\pub\mmona.dwt\illincis.gov\PIWDOT\Documents\IBDOT_Offices\Distrcfct_3\Projects\0570F05\0570F05-RT-Desck.dgn

USER NAME = DietzCB	DESIGNED -	REVISED -
	DRAWN -	REVISED -
PLOT SCALE = 40,0000 */ in.	CHECKED -	REVISED -
PLOT DATE = 1/14/2021	DATE -	REVISED -

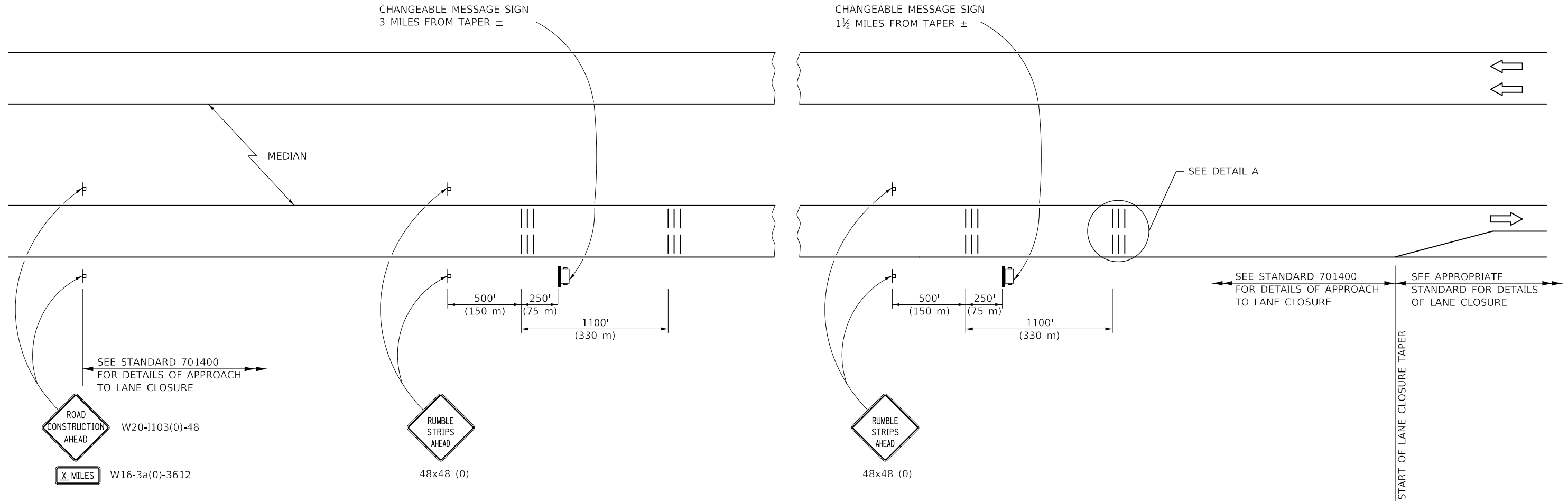
STATE OF ILLINOIS
DEPARTMENT OF TRANSPORTATION

CLASS A PATCHES (SPECIAL)

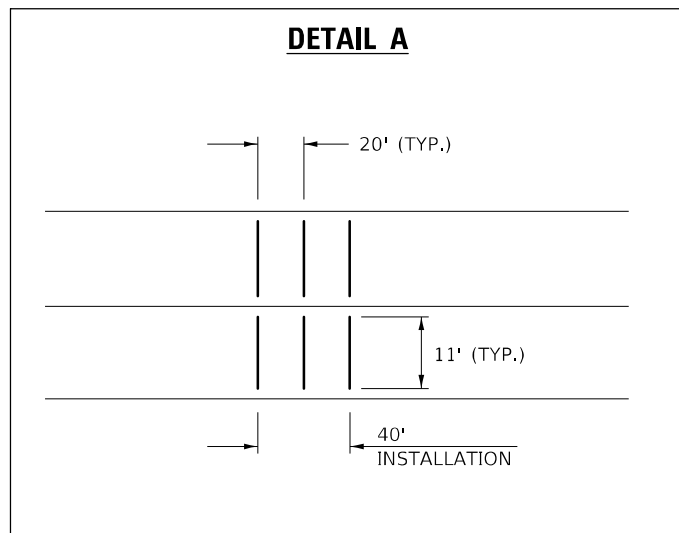
SCALE: SHEET 2 OF 2 SHEETS STA. TO STA.

F.A.I. RTE.	SECTION	COUNTY	TOTAL SHEETS	SHEET NO.
VAR.	CM21-50DB	CHAMPAIGN	8	7
CONTRACT NO. 70F05			ILLINOIS FED. AID PROJECT	

DETAIL FOR TEMPORARY RUMBLE STRIPS (SPECIAL)



DETAIL A



SYMBOLS

- ▬ SIGN
- ||| TEMPORARY RUMBLE STRIPS (SPECIAL)
- ▭ TRAILER MOUNTED SIGN

GENERAL NOTES

REMOVE THE TEMPORARY RUMBLE STRIPS (SPECIAL) PRIOR TO THE REMOVAL OF THE ADVANCED WARNING SIGNS.

ALL DIMENSIONS ARE IN INCHES (MILLIMETERS) UNLESS OTHERWISE SHOWN.

MODEL: \\MODEL\NAME
FILE NAME: \\PUB\ADMIN\COMMON\DOT\ILLINOIS\DOT\Documents\DOT_Offices\District 5\Projects\0570F05\CM21-5008\CAD\Process\0570F05-RT-Details.dgn

USER NAME = DietzCB	DESIGNED -	REVISED -
	DRAWN -	REVISED -
PLOT SCALE = 40,0000 * / in.	CHECKED -	REVISED -
PLOT DATE = 1/14/2021	DATE -	REVISED -

STATE OF ILLINOIS
DEPARTMENT OF TRANSPORTATION

TEMPORARY RUMBLE STRIPS (SPECIAL)

SCALE: SHEET 1 OF 1 SHEETS STA. TO STA.

F.A.J. RTE.	SECTION	COUNTY	TOTAL SHEETS	SHEET NO.
74	CM21-5008	MCCLEAN	8	8
ILLINOIS FED. AID PROJECT			CONTRACT NO. 70F05	