

STATE OF ILLINOIS
DEPARTMENT OF TRANSPORTATION

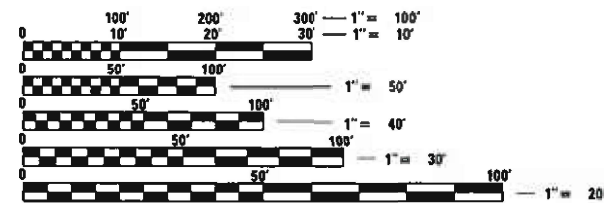
F.A.P. RTE.	SECTION	COUNTY	TOTAL SHEETS	SHEET NO.
326	CM21-5012	CHAMPAIGN	6	1
		ILLINOIS	CONTRACT NO. 70F09	

FOR INDEX OF SHEETS, SEE SHEET NO. 2
FOR SUMMARY OF QUANTITIES, SEE SHEET NO. 3

TRAFFIC DATA	
2020 ADT	= 5,500
P.V. %	= 80.9%
S.U. %	= 5.9%
M.U. %	= 13.2%
TRUCK RTE.	= CLASS II
N.H.S. RTE.	= YES

DESIGN DESIGNATION
OTHER PRINCIPAL ARTERIAL

TOWNSHIP
MAHOMET



FULL SIZE PLANS HAVE BEEN PREPARED USING STANDARD ENGINEERING SCALES. REDUCED SIZED PLANS WILL NOT CONFORM TO STANDARD SCALES. IN MAKING MEASUREMENTS ON REDUCED PLANS, THE ABOVE SCALES MAY BE USED.

J.U.L.I.E.
JOINT UTILITY LOCATION INFORMATION FOR EXCAVATORS
1-800-892-0123
OR 811

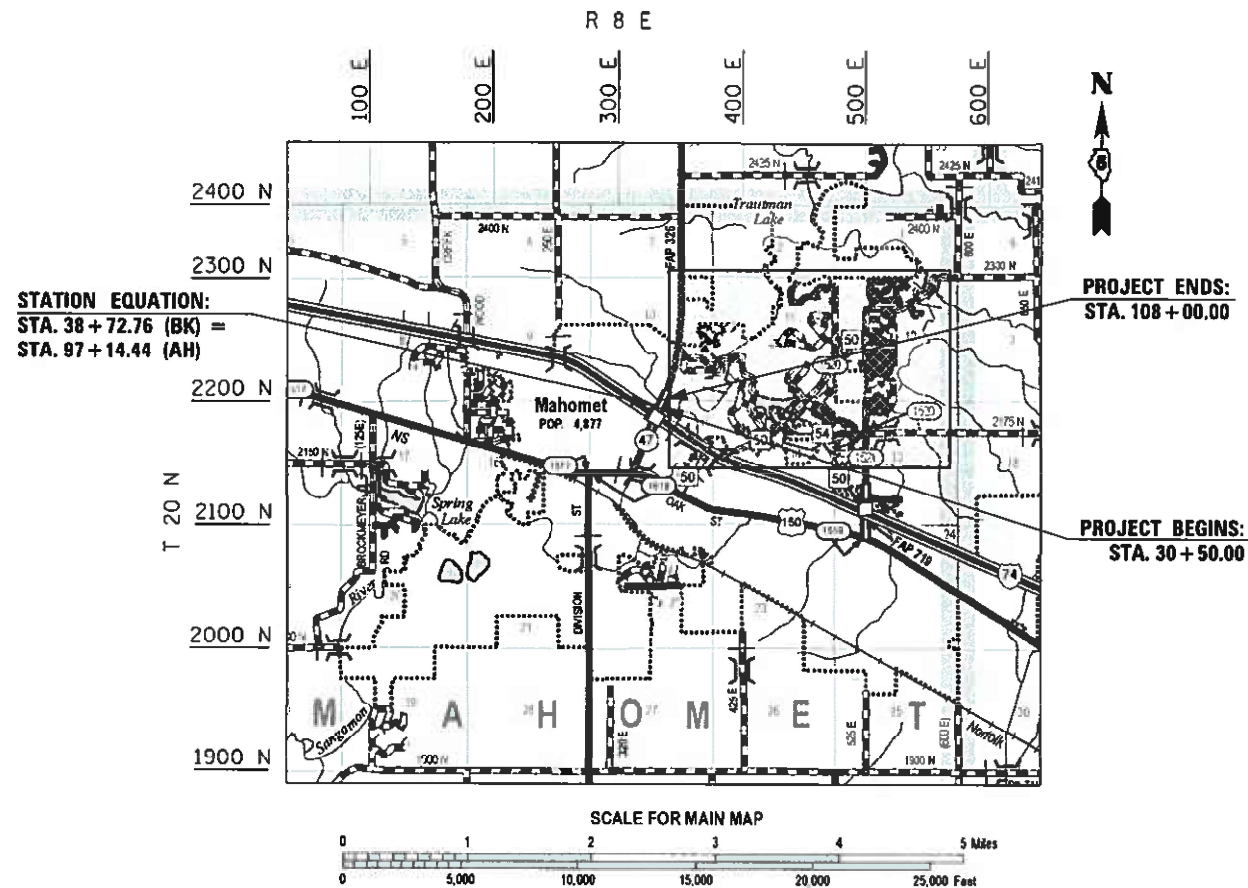
PROJECT ENGINEER: JASON STULTS, P.E.
PROJECT MANAGER: JOSEPH GRAZIANO, P.E.
DESIGNER: XINYU SUN, P.E.
PHONE NUMBER: (217)465-4181
CONTRACT NO. 70F09

**PROPOSED
HIGHWAY PLANS**

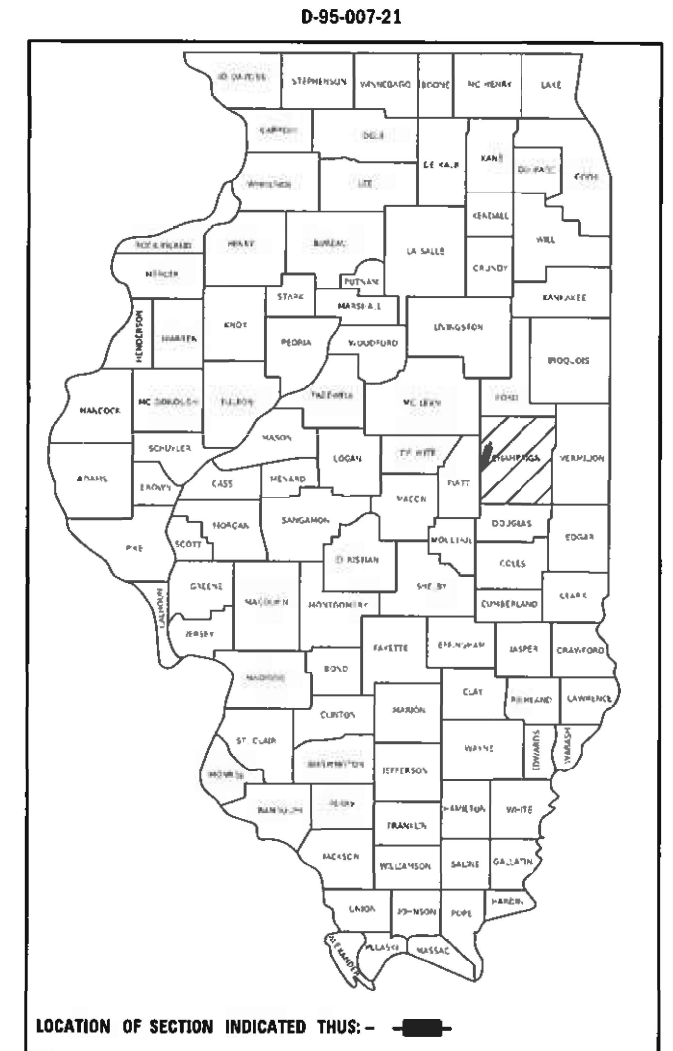
F.A.P. ROUTE 326 (IL-47)
SECTION CM21-5012
PATCHING
CHAMPAIGN COUNTY

C-95-023-21

IL 47 N. OF MAHOMET



GROSS LENGTH = 1334.3 FT. = 0.253 MILE
NET LENGTH = 1334.3 FT. = 0.253 MILE



STATE OF ILLINOIS
DEPARTMENT OF TRANSPORTATION

SUBMITTED 1/14 2021
Kensil A. Barnett sun
REGIONAL ENGINEER

March 19, 2021
Jason Stults
ENGINEER OF DESIGN AND ENVIRONMENT

March 19, 2021
James J. ...
DIRECTOR OF HIGHWAYS PROJECT IMPLEMENTATION

**PRINTED BY THE AUTHORITY
OF THE STATE OF ILLINOIS**

SUMMARY OF QUANTITIES

LOCATION OF WORK : FAP 326

URBAN

OTHER PRINCIPAL ARTERIAL

STA. 30+50 TO STA. 108+00

CHAMPAIGN COUNTY

FUNDING BREAKOUT: 100% STATE

CONSTRUCTION TYPE CODE: 0006

CODE NO.	ITEM	UNIT	QUANTITY
4200060	WELDED WIRE REINFORCEMENT	SQ YD	337.0
44200982	CLASS B PATCHES, TYPE II, 11 INCH	SQ YD	144.0
44200986	CLASS B PATCHES, TYPE III, 11 INCH	SQ YD	99.0
44200988	CLASS B PATCHES, TYPE IV, 11 INCH	SQ YD	238.0
44201299	DOWEL BARS 1 1/2"	EACH	675.0
44213200	SAW CUTS	FOOT	1,627.0
44213204	TIE BARS 3/4"	EACH	46.0
67100100	MOBILIZATION	L SUM	1.0
70102620	TRAFFIC CONTROL AND PROTECTION, STANDARD 701501	L SUM	1.0
* DENOTES SPECIALTY ITEM			

MODEL: \\MODEL\MRFE
 FILE NAME: \\p14m\com\dot.illinois.gov\PIWDOT\Documents\DOT_Offices\District 5\Projects\0570F09\CADD\B1\CAD\Faces\0570F09-ph-500.dgn

USER NAME = slrx	DESIGNED -	REVISED -
	DRAWN -	REVISED -
PLOT SCALE = 40,0000 * / in.	CHECKED -	REVISED -
PLOT DATE = 1/8/2021	DATE -	REVISED -

**STATE OF ILLINOIS
DEPARTMENT OF TRANSPORTATION**

SUMMARY OF QUANTITIES

SCALE: SHEET 1 OF 1 SHEETS STA. TO STA.

F.A.P. RTE.	SECTION	COUNTY	TOTAL SHEETS	SHEET NO.
326	CM21-5012	CHAMPAIGN	6	3
CONTRACT NO. 70F09				
ILLINOIS FED. AID PROJECT				

SCHEDULE OF QUANTITIES

ILL 47 NB CLASS B PATCHES, 11 INCH						CLASS B PATCHES, TYPE II, 11 INCH (SQ YD)	CLASS B PATCHES, TYPE III, 11 INCH (SQ YD)	CLASS B PATCHES, TYPE IV, 11 INCH (SQ YD)	SAW CUTS (FT)	TIE BARS 3/4" (EACH)	DOWEL BARS 1 1/2" (EACH)	WELDED WIRE REINFORCEMENT (SQ. YD)	
APPROX. STATION	DIR	LANE	LENGTH	WIDTH	SQ YD	44200982	44200986	44200988	44213200	44213204	44201299	42000060	
38+14	NB	DL	6	14	9.33	9.3			54.0		24.0		
99+97	NB	DL	6	16	10.67	10.7			60.0		28.0		
100+34	NB	DL	9	15	15.00		15.0		63.0		26.0	15.0	
101+34	NB	DL	16	14	24.89		24.9		74.0		36.0	24.9	
101+50	NB	DL	6	14	9.33	9.3			54.0		24.0		
102+10	NB	DL	15	13	21.67		21.7		69.0		22.0	21.7	
102+50	NB	DL	24	13	34.67			34.7	87.0	8.0	33.0	34.7	
103+40	NB	DL	36	13	52.00			52.0	111.0	12.0	44.0	52.0	
SUBTOTAL :						177.6	29.3	61.6	86.7	572.0	20.0	237.0	148.2

ILL 47 SB CLASS B PATCHES, 11 INCH						CLASS B PATCHES, TYPE II, 11 INCH (SQ YD)	CLASS B PATCHES, TYPE III, 11 INCH (SQ YD)	CLASS B PATCHES, TYPE IV, 11 INCH (SQ YD)	SAW CUTS (FT)	TIE BARS 3/4" (EACH)	DOWEL BARS 1 1/2" (EACH)	WELDED WIRE REINFORCEMENT (SQ. YD)	
APPROX. STATION	DIR	LANE	LENGTH	WIDTH	SQ YD	44200982	44200986	44200988	44213200	44213204	44201299	42000060	
103+27	SB	DL	7	13	10.11	10.1			53.0		22.0		
102+27	SB	DL	6	13	8.67	8.7			51.0		22.0		
101+78	SB	DL	8	13	11.56	11.6			55.0		22.0		
101+44	SB	DL	6	13	8.67	8.7			51.0		22.0		
97+92	SB	DL	19	14	29.56			29.6	80.0		36.0	29.6	
97+67	SB	DL	6	15	10.00	10.0			57.0		26.0		
97+30	SB	DL	10	14	15.56		15.6		62.0		24.0	15.6	
38+18	SB	DL	6	14	9.33	9.3			54.0		24.0		
37+11	SB	DL	8	14	12.44	12.4			58.0		24.0		
36+94	SB	DL	8	14	12.44	12.4			58.0		24.0		
36+76	SB	DL	6	14	9.33	9.3			54.0		24.0		
36+60	SB	DL	50	14	77.78			77.8	142.0	17.0	60.0	77.8	
35+72	SB	DL	14	14	21.78		21.8		70.0		24.0	21.8	
34+14	SB	DL	28	14	43.56			43.6	98.0	9.0	36.0	43.6	
31+83	SB	DL	6	14	9.33	9.3			54.0		24.0		
31+64	SB	DL	8	14	12.44	12.4			58.0		24.0		
SUBTOTAL :						302.6	114.3	37.3	150.9	1055.0	26.0	438.0	188.2

SUMMARY

	CLASS B PATCHES, TYPE II, 11 INCH (SQ YD)	CLASS B PATCHES, TYPE III, 11 INCH (SQ YD)	CLASS B PATCHES, TYPE IV, 11 INCH (SQ YD)	SAW CUTS (FT)	TIE BARS 3/4" (EACH)	DOWEL BARS 1 1/2" (EACH)	WELDED WIRE REINFORCEMENT (SQ. YD)
GRAND TOTAL :	143.7	98.9	237.6	1627.0	46.0	675.0	336.4
USE :	144.0	99.0	238.0	1627.0	46.0	675.0	337.0

MODEL: \\MODEL\MNMF5
 FILE NAME: \\p14\m1\com\dot\illinc\gov\PIWDOT\Documents\DOT_Office\CD\Bids\CD\Process\0570F09-ph-Schedule.dgn

USER NAME = suix	DESIGNED -	REVISED -
	DRAWN -	REVISED -
PLOT SCALE = 40,0000 * / in.	CHECKED -	REVISED -
PLOT DATE = 1/8/2021	DATE -	REVISED -

**STATE OF ILLINOIS
DEPARTMENT OF TRANSPORTATION**

SCHEDULE OF QUANTITIES			
SCALE:	SHEET 1	OF 1	SHEETS
	STA.		TO STA.

F.A.P. RTE.	SECTION	COUNTY	TOTAL SHEETS	SHEET NO.
326	CM21-5012	CHAMPAIGN	6	6
ILLINOIS FED. AID PROJECT			CONTRACT NO. 70F09	