

STATE OF ILLINOIS  
DEPARTMENT OF TRANSPORTATION

F.A.I. RTE.	SECTION	COUNTY	TOTAL SHEETS	SHEET NO.
#	82-4PS-2	ST. CLAIR	3	1
		ILLINOIS	CONTRACT NO. 76M33	

# FAI 70/FAP 594

INDEX OF SHEETS

- 1 COVER SHEET
- 2 SUMMARY OF QUANTITIES
- 3 HORIZONTAL COLLECTOR WELL LATERAL PLAN

D-98-044-19



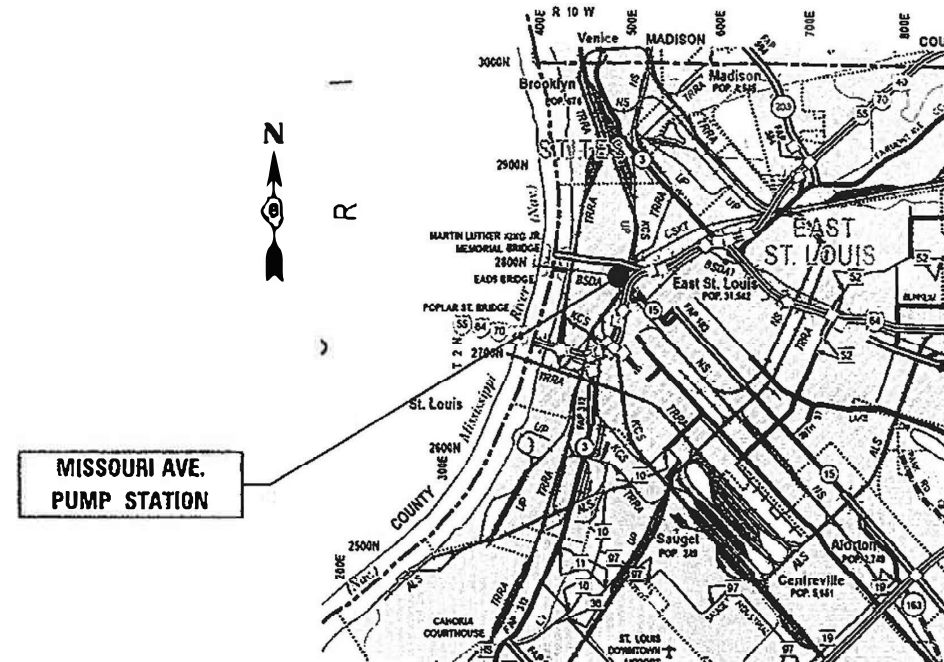
PROPOSED  
HIGHWAY PLANS

FAI 70 (I-55/I-64)  
SECTION 82-4PS-2  
MISSOURI AVENUE DEEP WELL FACILITY  
WATER MANAGEMENT SYSTEM IMPROVEMENTS  
ST. CLAIR COUNTY

C-98-060-19

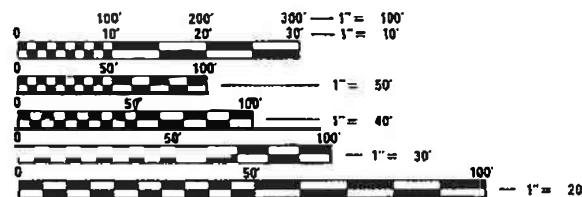
HIGHWAY STANDARDS

000001-08 STANDARD SYMBOLS, ABBREVIATIONS AND PATTERNS



MISSOURI AVE.  
PUMP STATION

ST. CLAIR COUNTY

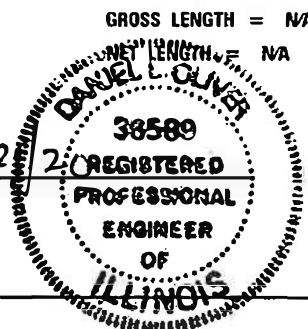


FULL SIZE PLANS HAVE BEEN PREPARED USING STANDARD ENGINEERING SCALES. REDUCED SIZED PLANS WILL NOT CONFORM TO STANDARD SCALES. IN MAKING MEASUREMENTS ON REDUCED PLANS, THE ABOVE SCALES MAY BE USED.

J.U.L.I.E.  
JOINT UTILITY LOCATION INFORMATION FOR EXCAVATION  
1-800-892-0123  
OR 811

PROJECT ENGINEER: HERVE GELIN 618-346-3179  
PROJECT MANAGER: PHILLIP SAWYER 618-346-3275

*Daniel L. Oliver* 2/2  
DANIEL L. OLIVER  
REGISTERED PROFESSIONAL ENGINEER  
STATE OF ILLINOIS NO. 062-036589  
LICENSE EXPIRES NOVEMBER 30, 2021



PLANS PREPARED BY:  
**KLINGNER & ASSOCIATES, P.C.**  
Engineers • Architects • Surveyors  
616 N. 24th St. Quincy, Illinois 62301 217.223.3670  
STATE OF ILLINOIS DESIGN FIRM # 1842738

STATE OF ILLINOIS  
DEPARTMENT OF TRANSPORTATION

SUBMITTED Aug. 11, 2020  
*Keith Roberts*  
REGIONAL ENGINEER

January 29, 2021  
*Scott A. Elk*  
ENGINEER OF DESIGN AND ENVIRONMENT

January 29, 2021  
*James J. Gu*  
DIRECTOR OF HIGHWAYS PROJECT IMPLEMENTATION

PRINTED BY THE AUTHORITY  
OF THE STATE OF ILLINOIS

ILLINOIS DEPARTMENT OF TRANSPORTATION  
SUMMARY OF QUANTITIES

CODE NO.	ITEM	UNIT	TOTAL QUANTITY	100% STATE URBAN		
				CONSTRUCTION TYPE CODE	ST. CLAIR	
				0040		
67100100	MOBILIZATION	L SUM	1		1	
X0320091	HORIZONTAL WELL, CLEANING	FOOT	1,550		1,550	
X0320092	ADDITIONAL TREATMENT NO. 1, HORIZONTAL	FOOT	250		250	
X0320093	ADDITIONAL TREATMENT NO. 2, HORIZONTAL	FOOT	250		250	

REV. - MS

D:\11\110223\Work\_Order\_10 - Wall Cleaning\CADD Sheets\11076M33-ht-500.dgn

**KLINGNER & ASSOCIATES, P.C.**  
Engineers • Architects • Surveyors  
616 N. 24TH ST. QUINCY, ILLINOIS 62301-2112 223-3670  
STATE OF ILLINOIS DESIGN FIRM NO. 184-2738

USER NAME = <i>ams</i>	DESIGNED - AMS	REVISED -
	DRAWN - ADL	REVISED -
PLOT SCALE = 2 x 10 " = 1' 0"	CHECKED - AMS	REVISED -
PLOT DATE = 2/21/2020	DATE - ADL	REVISED -

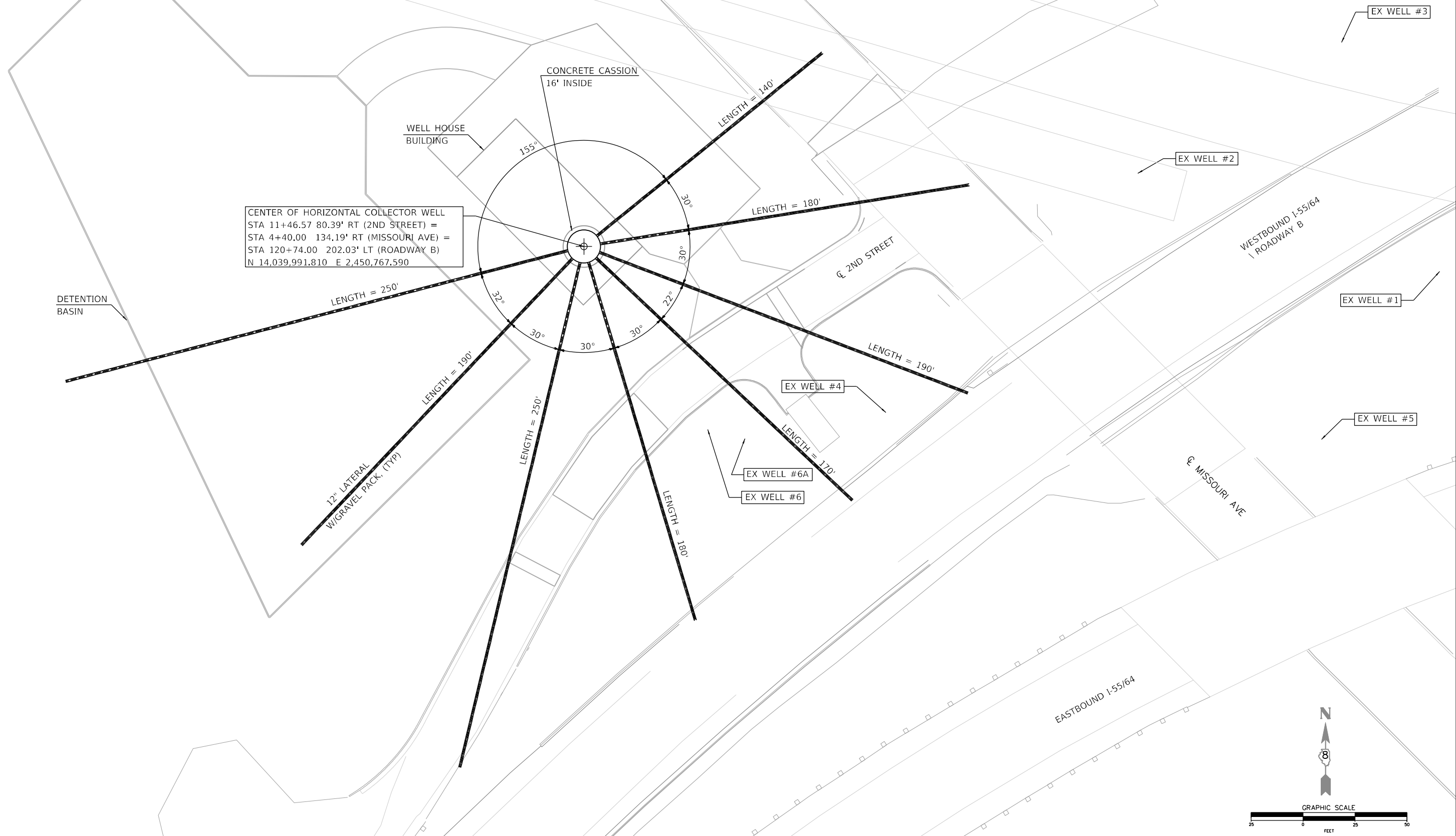
**STATE OF ILLINOIS  
DEPARTMENT OF TRANSPORTATION**

**SUMMARY OF QUANTITIES**

SCALE: SHEET OF SHEETS STA. TO STA.

F.A.I. RTE.	SECTION	COUNTY	TOTAL SHEETS	SHEET NO.
VAR	82-4P5-2	ST. CLAIR	3	2
ILLINOIS FED. AID PROJECT			CONTRACT NO. 76M33	

D:\11 Files\110023\Work - Order 10 - Well Cleaning\CA00 Sheets\0876M33-eh-tr-plan.dgn



CENTER OF HORIZONTAL COLLECTOR WELL  
 STA 11+46.57 80.39' RT (2ND STREET) =  
 STA 4+40.00 134.19' RT (MISSOURI AVE) =  
 STA 120+74.00 202.03' LT (ROADWAY B)  
 N 14,039,991.810 E 2,450,767.590

DETENTION BASIN

12" LATERAL  
 W/GRAVEL PACK (TYP)

CONCRETE CASSION  
 16' INSIDE

WELL HOUSE  
 BUILDING

Q 2ND STREET

WESTBOUND I-55/64  
 ROADWAY B

Q MISSOURI AVE

EASTBOUND I-55/64

EX WELL #3

EX WELL #2

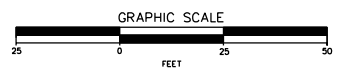
EX WELL #1

EX WELL #5

EX WELL #4

EX WELL #6A

EX WELL #6



**KLINGNER & ASSOCIATES, P.C.**  
 Engineers • Architects • Surveyors  
 616 N. 24TH ST. QUINCY, ILLINOIS 62301 217.223.3670  
 STATE OF ILLINOIS DESIGN FIRM NO. 164-2738

USER NAME = oms	DESIGNED - DLO	REVISD -
PLOT SCALE = 2:0" = 1'-0"	DRAWN - DLO	REVISD -
PLOT DATE = 2/21/2020	CHECKED - BRN	REVISD -
	DATE -	REVISD -

DESIGNED - DLO	REVISD -
DRAWN - DLO	REVISD -
CHECKED - BRN	REVISD -
DATE -	REVISD -

DESIGNED - DLO	REVISD -
DRAWN - DLO	REVISD -
CHECKED - BRN	REVISD -
DATE -	REVISD -

STATE OF ILLINOIS  
 DEPARTMENT OF TRANSPORTATION

HORIZONTAL COLLECTOR WELL LATERAL PLAN  
 MISSOURI AVENUE DEEP WELL FACILITY

SCALE: 1"=25' SHEET OF SHEETS STA. TO STA.

F.A.I. RTE.	SECTION	COUNTY	TOTAL SHEETS	SHEET NO.
VAR	82-4PS-2	ST. CLAIR	3	3
CONTRACT NO. 76M33				
ILLINOIS FED. AID PROJECT				