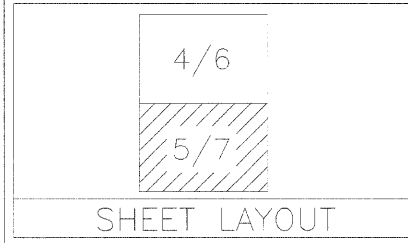
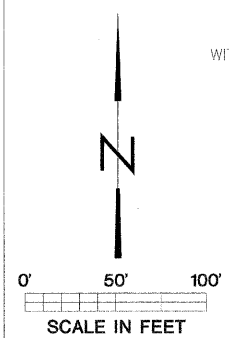


- SPECIAL EXCELSIOR BLANKET
1,590'L X 8'W (1,413 S.Y.)
- SPECIAL EXCELSIOR BLANKET
819'L X 8'W (728 S.Y.)
- PROPOSED 6:1 SLOPE
- PROPOSED 3:1 SLOPE
- DEWATERING IMPOUNDMENT #2
SURFACE WATER ELEVATION: 402.3
ESTIMATED VOLUME: 16.1 MILLION GALLONS
pH: 7.45 (04-16-08)
- PROPOSED PIPE CONNECTION
SEE DETAIL E-13, SHEET# 13
- PROPOSED PIPE CULVERT
24" RCCP EXTENSION (40.0 FT.)
U.S.F.L. ELEVATION: 402.2
WITH 24" DIA. PRECAST REINFORCED
CONCRETE FLARED END SECTION
- PROPOSED 5:1 SLOPE
- STONE RIPRAP, A-3
APPROXIMATE DIMENSIONS
16'L X 8'W (4 TONS)
- PROPOSED PIPE CULVERT
24" RCCP EXTENSION (28.0 FT.)
D.S.F.L. ELEVATION: 404.2
WITH 24" DIA. PRECAST REINFORCED
CONCRETE FLARED END SECTION
- PROPOSED PIPE CONNECTION
SEE DETAIL E-13, SHEET# 13
- GUARDRAIL REMOVAL (400 FT)
SEE NOTE #4, SHEET #3
- SPECIAL EXCELSIOR BLANKET
429'L X 8'W (381 S.Y.)
- SPECIAL EXCELSIOR BLANKET
803'L X 8'W (714 S.Y.)



LEGEND

| | |
|--|---------------------------|
| | EXISTING CONTOUR |
| | PROPOSED CONTOUR |
| | CONSTRUCTION LIMITS |
| | TREELINE |
| | PERIMETER EROSION BARRIER |
| | EXISTING FENCE LINE |
| | SECTION LINE |
| | ELECTRIC POWER POLE |
| | CONTROL POINT |

SW 1/4, SE 1/4, SEC. 18, T7S, R1W ELKVILLE RD. (ASPHALT)