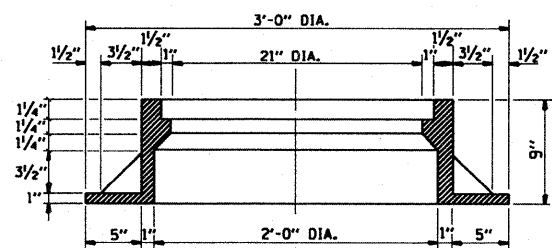


PLAN

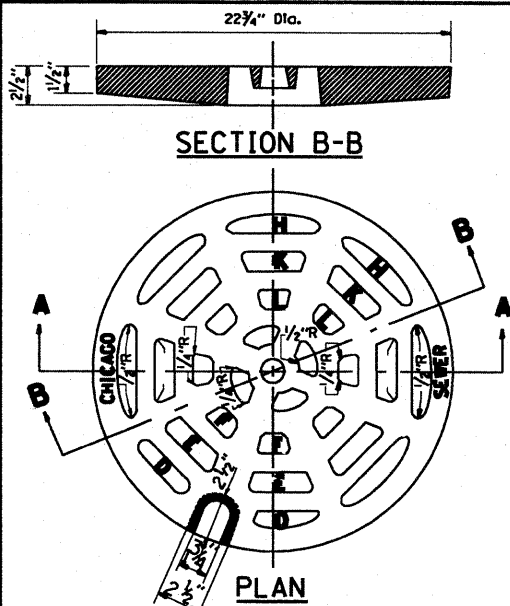


SECTION A-A

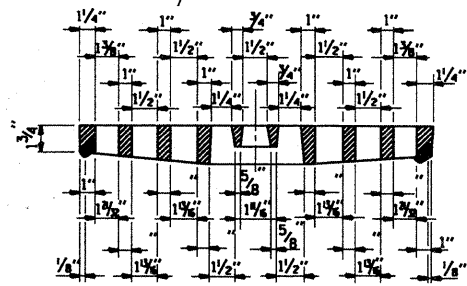
NOTE: METAL PLATES MUST BE FURNISHED FOR PERFORATED LIDS ON MANHOLES

CHICAGO STANDARD MANHOLE FRAME

SCALE: 1/2"=1'-0"
MATERIAL: CAST IRON



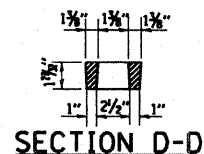
PLAN



SECTION A-A

PERFORATED LID FOR CATCH BASINS & MANHOLES

SCALE: 2"=1'-0"
MATERIAL: CAST IRON



SECTION D-D



SECTION E-E



SECTION F-F



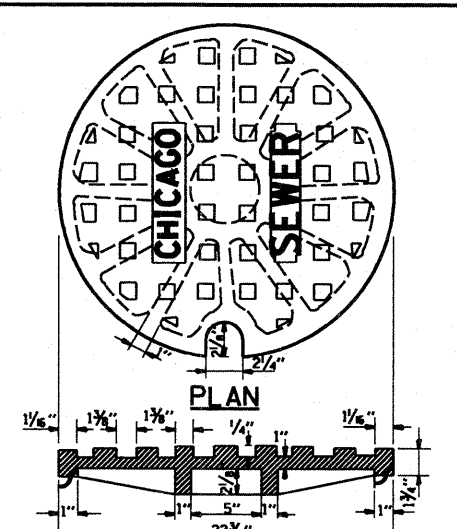
SECTION H-H



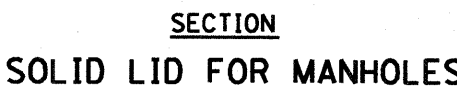
SECTION K-K



SECTION L-L



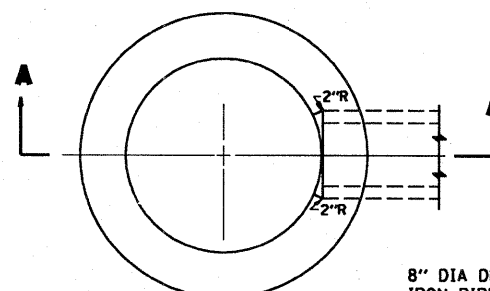
PLAN



SECTION

SOLID LID FOR MANHOLES

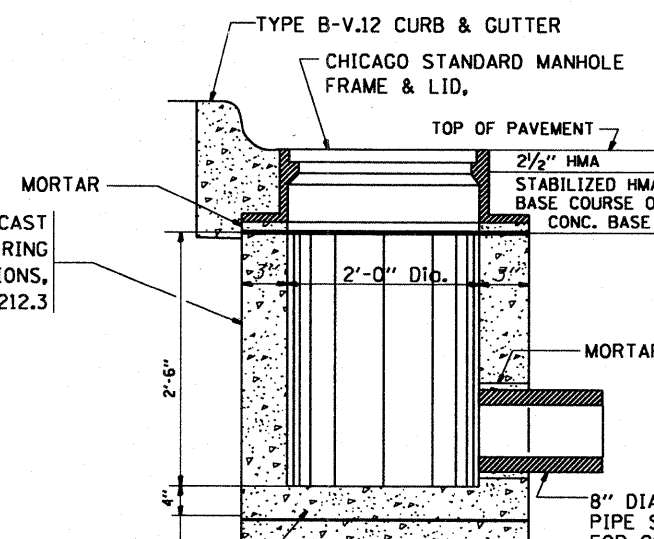
SCALE: NONE
MATERIAL: CAST IRON



PLAN

(FRAME & LID NOT SHOWN)

8" DIA DUCTILE IRON PIPE, PART OF ITEM 7C



SECTION A-A

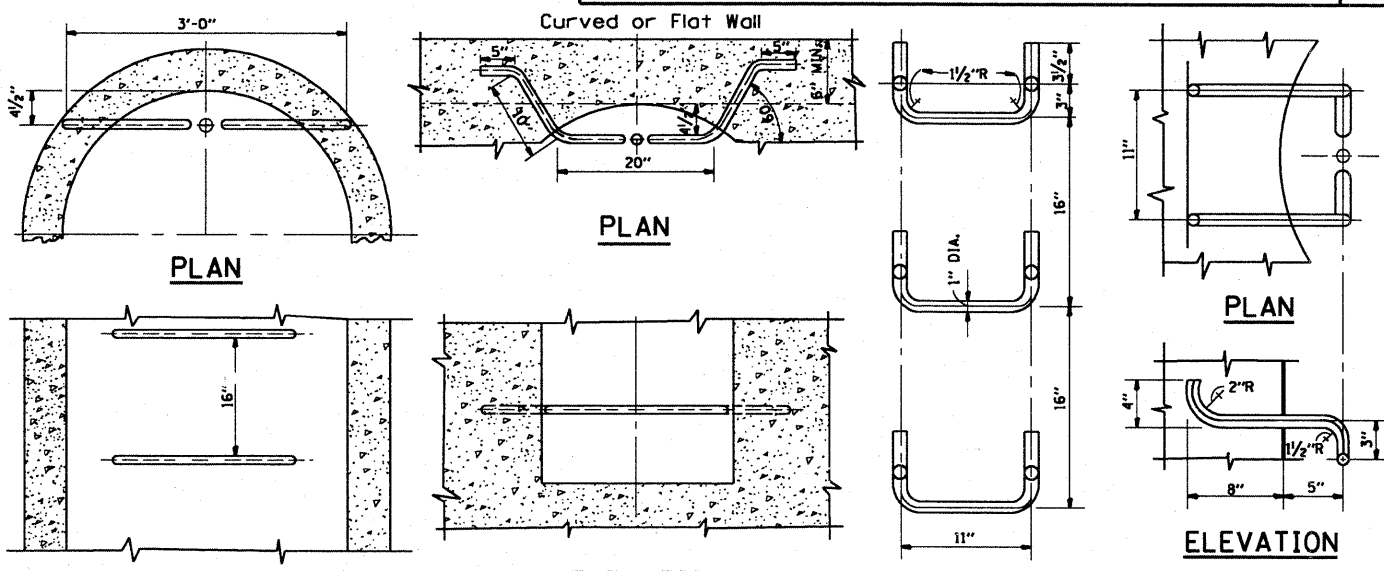
REINF. CONC. BASE CAST AS INTEGRAL PART OF 24" DIA. PRECAST CONC. RING
6" MINIMUM GRANULAR EMBEDMENT UNDER ALL INLETS. FURNISHING AND INSTALLING GRANULAR EMBEDMENT SHALL BE INCLUDED IN THE UNIT PRICE BID FOR ITEM 12

STANDARD INLETS

SCALE 1"=1'-0"
ITEM 12

THIS INLET DETAIL IS SOMETIMES REFERRED TO AS "CHICAGO STANDARD INLET, TYPE A"

NOTE: INLETS SHALL NOT BE CONSTRUCTED UNLESS IT IS IMPOSSIBLE TO CONSTRUCT A CATCH BASIN. THE CONTRACTOR SHALL HAVE THE DEPARTMENT OF SEWERS APPROVAL BEFORE CONSTRUCTING INLETS.



ELEVATION TYPE X

SCALE: 1"=1'-0"

ELEVATION TYPE Y

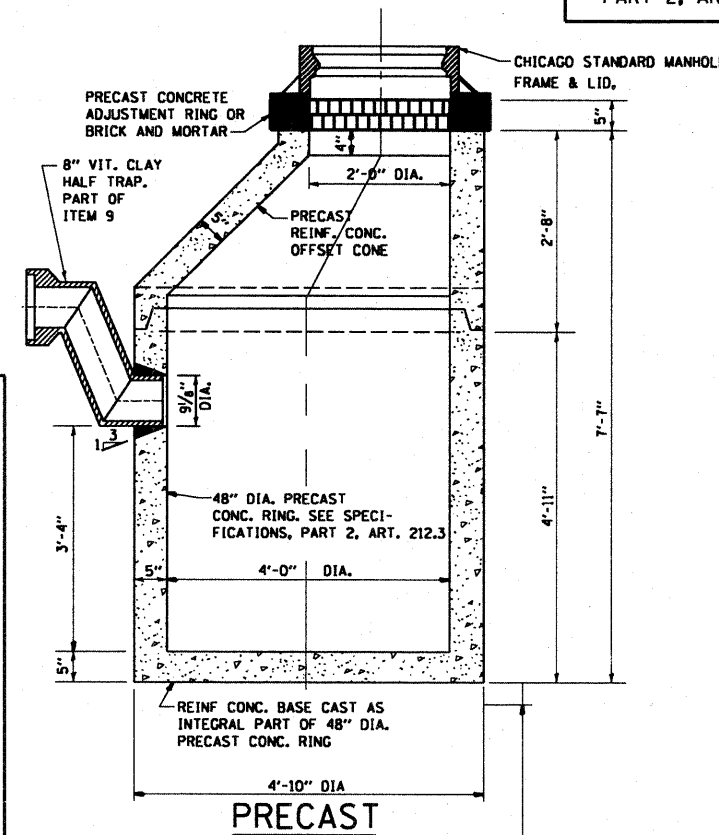
SCALE: 1"=1'-0"

SPACING HANDHOLD-TYPE Z RUNG

Scale: 1/2"=1'-0"

STANDARD LADDER RUNGS

ALL LADDER RUNGS SHALL BE ALUMINUM OR GALVANIZED WROUGHT IRON AS SPECIFIED IN THE SPECIFICATIONS, PART 2, ARTICLE 214.2. RUNGS SHALL BE 1" DIAMETER OR OF A SHAPE HAVING AN EQUIVALENT CROSS-SECTIONAL AREA.



PRECAST

NOTE: 6" MINIMUM GRANULAR EMBEDMENT UNDER ALL CATCH BASINS

STANDARD CATCH BASINS

SCALE: 3/4"=1'-0"
ITEM 9

FILE NAME =	USER NAME = aequellf	DESIGNED - M. GOMEZ	REVISED -
as:\pwwork\pwwd\T\AQUEELFF\20120745\015\Std.dgn		DRAWN -	REVISED -
		CHECKED -	REVISED -
		DATE - 01-25-01	REVISED -

STATE OF ILLINOIS	
DEPARTMENT OF TRANSPORTATION	

CITY OF CHICAGO	
CATCH BASIN, INLET AND MANHOLE DETAILS	
SCALE: NONE	SHEET NO. 15 OF 23 SHEETS
STA.	TO STA.

F.A.U. RTE.	SECTION	COUNTY	TOTAL SHEETS	SHEET NO.
2714	(1213&3198BRS-4	COOK	23	15
BD600-13 (BD47)		CONTRACT NO. 60356		
FED. ROAD DIST. NO. 1 ILLINOIS FED. AID PROJECT				

CITY OF CHICAGO
DEPARTMENT OF SEWERS
ENGINEERING DIVISION