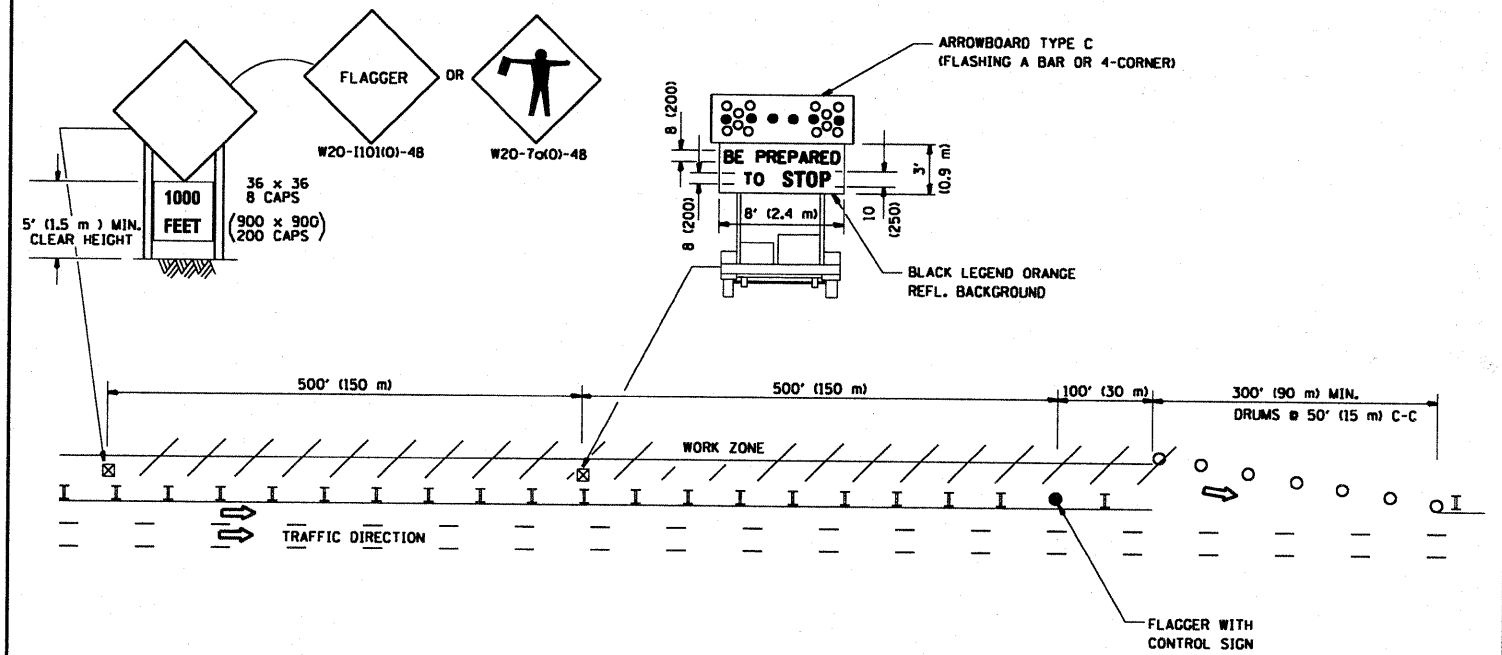
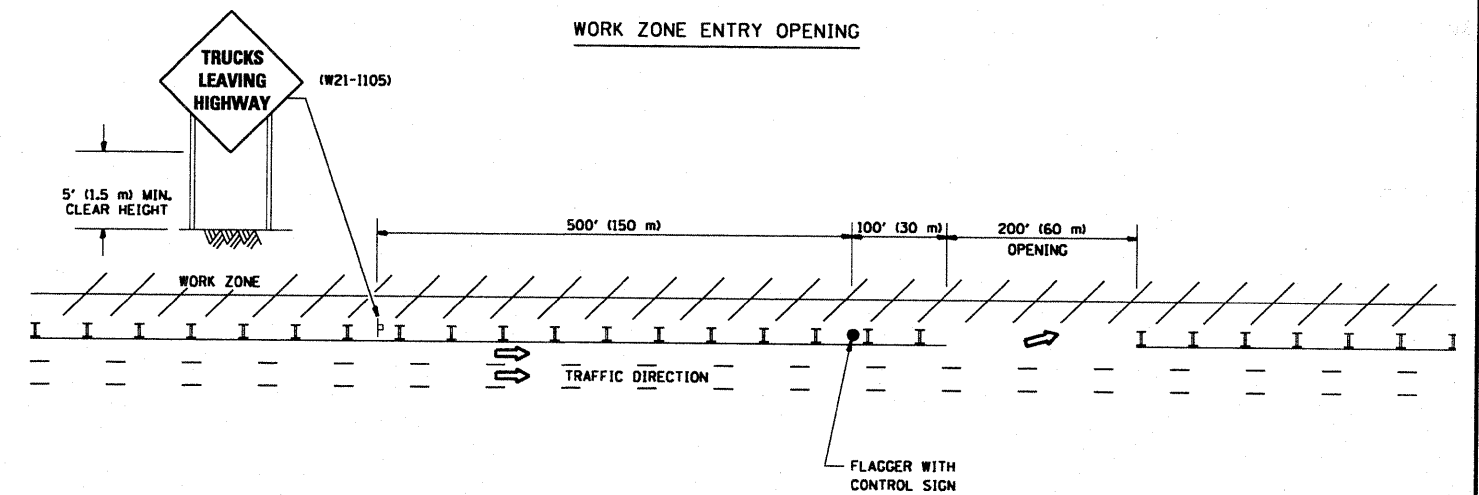


SIGNING FOR FLAGGING OPERATIONS AT WORK ZONE OPENINGS

WORK ZONE EXIT OPENING



WORK ZONE ENTRY OPENING



NOTES:

1. The Arrowboard, the Flagger Ahead trailer mounted sign, and the Trucks Leaving Highway sign shall be removed or turned away from traffic and the exit and entry openings shall be closed when the flagging operation ceases.
2. Work Zone Exit Openings should be a minimum of one half mile apart.
3. Exiting the work zone at any place other than at a Work Zone Exit Opening will be prohibited.
4. All vehicles shall enter the work zone at entry openings, using their turn signals to warn motorists.

ALL DIMENSIONS ARE IN INCHES (MILLIMETERS) UNLESS OTHERWISE SHOWN

FILE NAME =	USER NAME = aquesiff	DESIGNED -	REVISED - D.W.S. 08-98
ct:\pw_work\PWIDOT\ADQUELFF\08120745\01	Std.dgn	DRAWN -	REVISED - J.A.F. 04-03
	PLDT SCALE = 100.0000' / IN.	CHECKED -	REVISED - J.A.F. 02-06
	PLDT DATE = 2/11/2009	DATE -	REVISED - S.P.B. 01-07

**STATE OF ILLINOIS
DEPARTMENT OF TRANSPORTATION**

**SIGNING FOR FLAGGING OPERATIONS
AT WORK ZONE OPENINGS**

SCALE: NONE SHEET NO. 21 OF 23 SHEETS STA. TO STA.

F.A.U. RTE.	SECTION	COUNTY	TOTAL SHEETS	SHEET NO.
2714	(12)3&3198BIRS-4	COOK	23	21
TC-18			CONTRACT NO. 60356	
FED. ROAD DIST. NO. 1 ILLINOIS FED. AID PROJECT				