

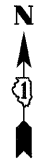
BENCHMARKS

|                     |         |               |                  |           |
|---------------------|---------|---------------|------------------|-----------|
| F.A.P. RTE.         | SECTION | COUNTY        | TOTAL SHEETS     | SHEET NO. |
| 351                 | 3277R   | COOK          | 541              | 33        |
| STA. 2+390          |         | TO STA. 3+000 |                  |           |
| FED. ROAD DIST. NO. |         | ILLINOIS      | FED. AID PROJECT |           |
| CONTRACT NO. 60774  |         |               |                  |           |

|           |   |                               |
|-----------|---|-------------------------------|
| BM NO. 21 | SET CROSS CUT ON WALK AT THE SOUTHEAST CORNER OF PARK AVENUE AND 159TH STREET   | EL = 183.814<br>(EL = 603.06) |
| BM NO. 51 | BOX CUT ON THE SOUTHWEST CORNER OF TRAFFIC HANDHOLE AT THE SOUTHEAST CORNER OF CAROL AVENUE AND 159TH STREET  | EL = 184.317<br>(EL = 604.71) |
| BM NO. 52 | CROSS CUT ON WESTERLY FLANGE BOLT ON FIRE HYDRANT AT THE NORTHWEST CORNER OF FINCH AVENUE AND 159TH STREET  | EL = 184.897<br>(EL = 606.62) |
| BM NO. 53 | BOX CUT ON THE SOUTHEASTERLY CORNER OF RAILROAD BRIDGE PIER IN THE C OF 159TH STREET AT EAST FACE OF BRIDGE APPROX. 30-METERS (100') WEST OF CENTER AVE.  | EL = 183.871<br>(EL = 603.25) |
| BM NO. 54 | CHISELED CROSS ON WESTERLY BOLT OF FIRE HYDRANT AT THE NORTHWEST CORNER OF LEXINGTON AVENUE AND 159TH STREET  | EL = 185.274<br>(EL = 607.85) |
| BM NO. 55 | CHISELED BOX CUT ON SOUTH SIDE OF CONCRETE BASE FOR MAST ARM LIGHT POLE ON THE NORTH SIDE OF 159TH ST. ON EAST BACK OF CURB OF GAUGER AVENUE EXTENDED NORTH   | EL = 185.441<br>(EL = 608.40) |
| BM NO. 56 | CHISELED CROSS ON WESTERLY FLANGE BOLT OF FIRE HYDRANT AT THE NORTHWEST CORNER OF ASHLAND AVENUE AND 159TH STREET   | EL = 185.600<br>(EL = 608.92) |
| BM NO. 57 | SET BOX CUT ON SOUTHWEST CORNER OF 1-METER (3') LONG GARAGE APRON ON THE NORTH SIDE OF 159TH STREET ON THE WEST FACE OF 1-STORY BRICK AND BLOCK BUILDING BETWEEN PAULINA AVENUE AND MARSHFIELD AVENUE | EL = 185.561<br>(EL = 608.80) |
| BM NO. 58 | SET CHISELED CROSS ON WESTERLY FLANGE BOLT OF FIRE HYDRANT AT THE NORTHWEST CORNER OF PAGE AVENUE AND 159TH STREET  | EL = 185.847<br>(EL = 609.73) |
| BM NO. 59 | SET CUT CROSS ON CONCRETE BASE OF LIGHT POLE WITH MAST ARM ON THE NORTH SIDE OF 159TH STREET (1ST LIGHT POLE WEST OF LINCOLN AVENUE)  | EL = 185.636<br>(EL = 609.04) |

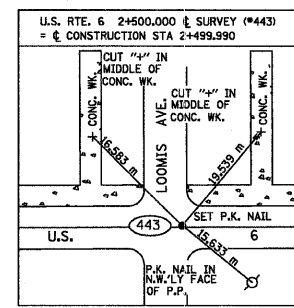
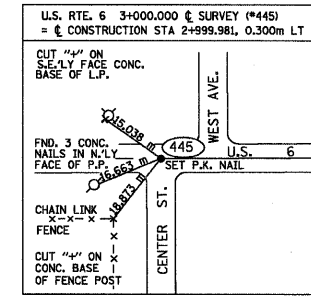
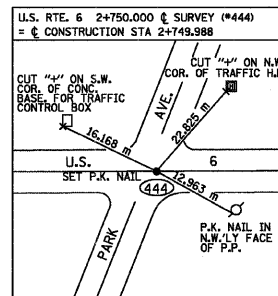
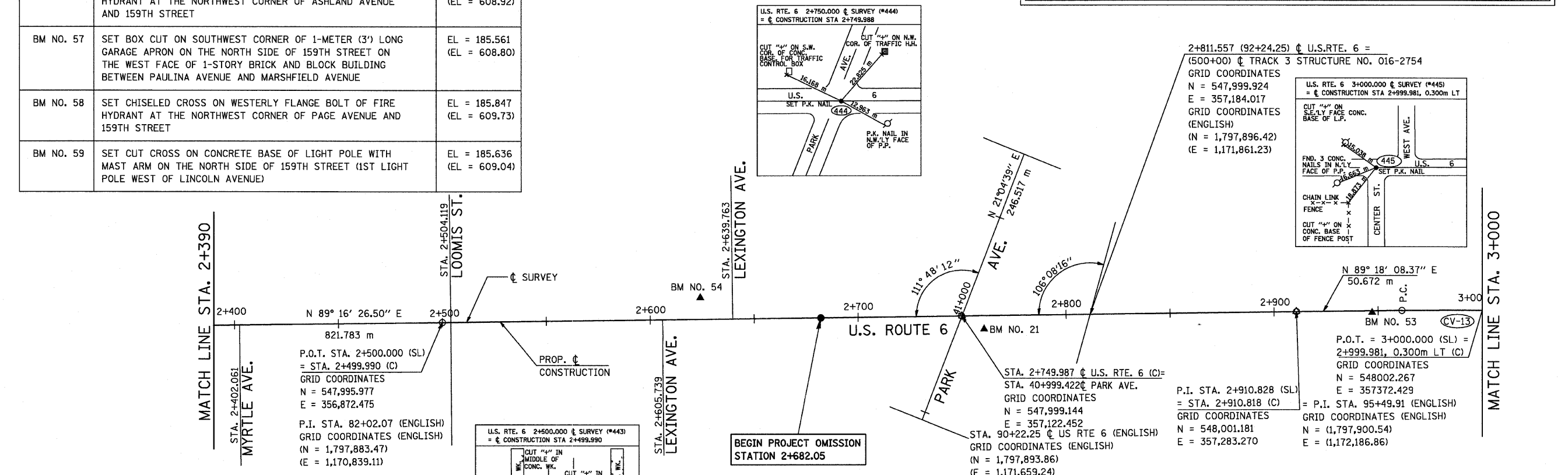
|           |  |                               |
|-----------|--|-------------------------------|
| BM NO. 60 | BOX CUT ON SOUTHWEST CORNER OF CONCRETE BASE OF TRAFFIC SIGNAL LIGHT ON THE NORTHEAST CORNER OF DIXIE HIGHWAY AND 159TH STREET                       | EL = 185.715<br>(EL = 609.30) |
| BM NO. 62 | CHISELED CROSS ON THE NORTHERLY BOLT OF FIRE HYDRANT ON THE NORTH SIDE OF 159TH STREET AND +/- CENTER LINE OF CLAREMONT AVENUE EXTENDED              | EL = 186.295<br>(EL = 611.20) |
| BM NO. 63 | CHISELED CROSS ON SOUTHWESTRLY BOLT ON FLANGE OF 1ST FIRE HYDRANT NORTH OF 1ST ALLEY SOUTH OF 157TH STREET ON THE EAST SIDE OF WEST AVENUE           | EL = 184.791<br>(EL = 606.27) |
| BM NO.65  | BOX CUT ON TOP OF 0.45 m (18") RCP FLARED END SECTION ON THE SOUTH SIDE OF ENTRANCE TO (ALIED-TUBE CONDUIT) GATE 2 ON THE EAST SIDE OF CENTER STREET | EL = 184.896<br>(EL = 606.61) |

NOTE: SURVEY LINE (SL) STATIONING AT GROUND  
CONSTRUCTION LINE (C) STATIONING AT GRID.



NOTE: DIMENSIONS AND ELEVATION IN BRACKETS "( ) " ARE IN ENGLISH UNITS OF MEASURE.

NOTE: A LOCAL COORDINATE SYSTEM WAS USED FOR THE LAYOUT OF ALL TRACK CONSTRUCTION, PLANS AND COORDINATES GIVEN IN THE TRACK PLANS USE THE LOCAL COORDINATE SYSTEM. THE LOCAL RAILROAD COORDINATES SYSTEM DIFFERS FROM THE STATE PLANE COORDINATE SYSTEM USED FOR ALL ROADWAY PLANS. A TABLE CONTAINING SIMILAR POINTS IS PROVIDED IN THE RAILROAD TRACK LAYOUT PLANS.



| C. CONSTRUCTION U.S. ROUTE 6 | GRID COORDINATES |             | GROUND COORDINATES |             |
|------------------------------|------------------|-------------|--------------------|-------------|
|                              | NORTHING         | EASTING     | NORTHING           | EASTING     |
| Sta 2+400.000                | 547,994.709      | 356,772.493 | 548,001.065        | 356,776.631 |
| Sta 2+500.000                | 547,995.976      | 356,872.485 | 548,002.332        | 356,876.624 |
| Sta 2+600.000                | 547,997.243      | 356,972.477 | 548,003.599        | 356,976.617 |
| Sta 2+700.000                | 547,998.510      | 357,072.469 | 548,004.866        | 357,076.610 |
| Sta 2+800.000                | 547,999.777      | 357,172.461 | 548,006.133        | 357,176.604 |
| Sta 2+900.000                | 548,001.044      | 357,272.453 | 548,007.400        | 357,276.597 |
| Sta 3+000.000                | 548,001.967      | 357,372.447 | 548,008.324        | 357,376.592 |

| CURVE DATA (ENGLISH) |            | COORDINATES     |                 | COORDINATES (ENGLISH) |                    |
|----------------------|------------|-----------------|-----------------|-----------------------|--------------------|
| PI STA = 2+986.491   | (97+98.18) | N = 548,002.103 | E = 357,358.937 | (N = 1,797,903.56)    | (E = 1,172,435.11) |
| Δ = 1° 08' 46" (RT)  |            |                 |                 |                       |                    |
| R = 2,499.326 m      | (8199.89') |                 |                 |                       |                    |
| T = 25.000 m         | (82.02')   |                 |                 |                       |                    |
| L = 49.999 m         | (164.04')  |                 |                 |                       |                    |
| E = 0.125 m          | (0.41')    |                 |                 |                       |                    |
| P.C. STA = 2+961.490 | (97+16.16) | N = 548,001.798 | E = 357,333.938 | (N = 1,797,902.57)    | (E = 1,172,353.09) |
| P.T. STA = 3+011.489 | (98+80.19) | N = 548,001.907 | E = 357,383.936 | (N = 1,797,902.92)    | (E = 1,172,517.13) |

| REVISIONS |      |
|-----------|------|
| NAME      | DATE |
|           |      |
|           |      |
|           |      |
|           |      |
|           |      |

ILLINOIS DEPARTMENT OF TRANSPORTATION  
US RTE 6 FROM I-294 TO IL RTE 1  
ALIGNMENT, TIES AND  
BENCHMARKS  
STA. 2+390 TO STA. 3+000  
AT-03 DRAWN BY VAP  
DATE 01/28/09 CHECKED BY NAP

