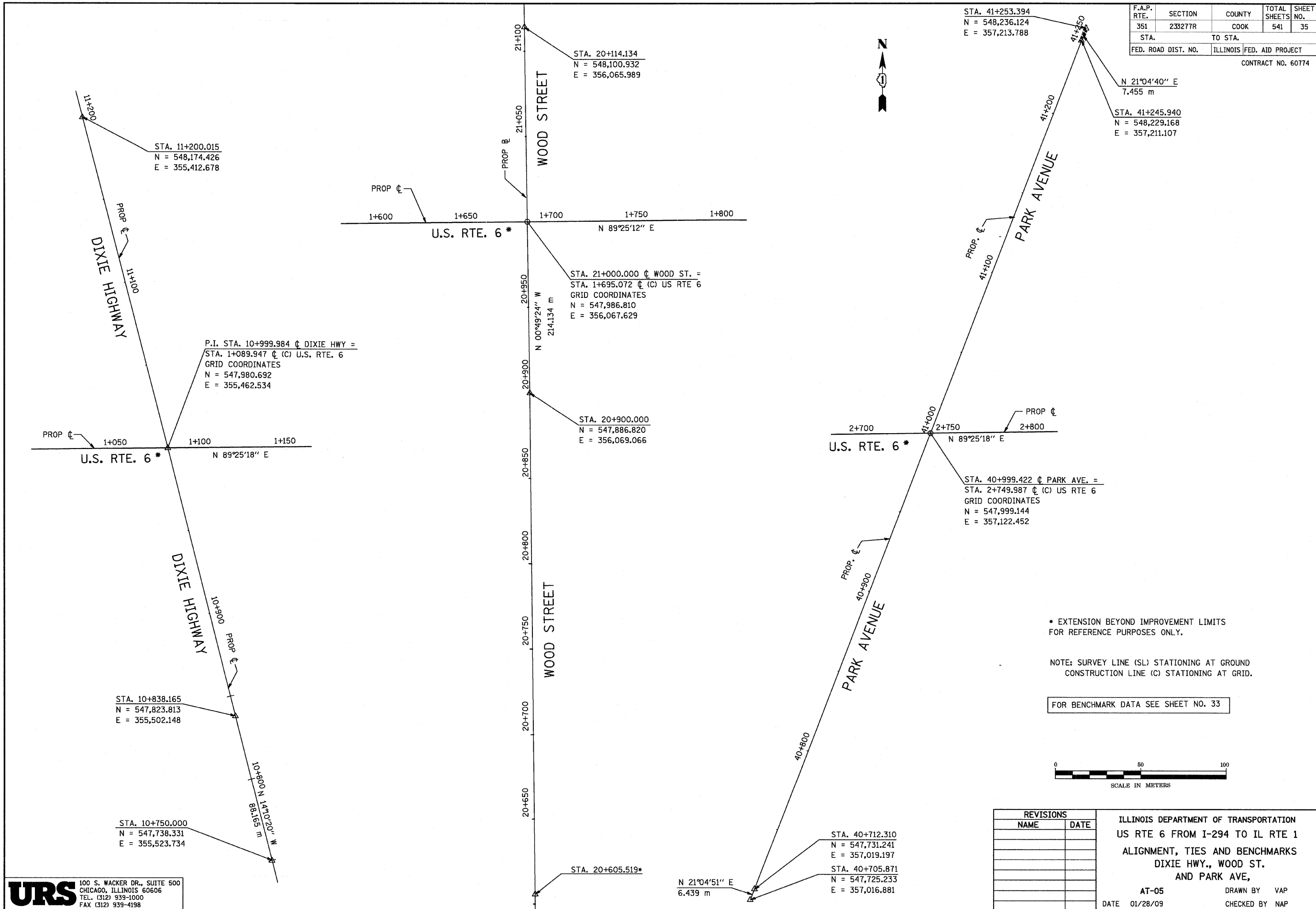


F.A.P. RTE.	SECTION	COUNTY	TOTAL SHEETS	SHEET NO.
351	233277R	COOK	541	35
STA.		TO STA.		
FED. ROAD DIST. NO.		ILLINOIS	FED. AID PROJECT	
CONTRACT NO. 60774				



STA. 11+200.015
N = 548,174.426
E = 355,412.678

P.I. STA. 10+999.984 @ DIXIE HWY =
STA. 1+089.947 @ (C) U.S. RTE. 6
GRID COORDINATES
N = 547,980.692
E = 355,462.534

STA. 10+838.165
N = 547,823.813
E = 355,502.148

STA. 10+750.000
N = 547,738.331
E = 355,523.734

STA. 20+114.134
N = 548,100.932
E = 356,065.989

STA. 21+000.000 @ WOOD ST. =
STA. 1+695.072 @ (C) US RTE 6
GRID COORDINATES
N = 547,986.810
E = 356,067.629

STA. 20+900.000
N = 547,886.820
E = 356,069.066

STA. 20+605.519*

STA. 41+253.394
N = 548,236.124
E = 357,213.788

N 21°04'40" E
7.455 m

STA. 41+245.940
N = 548,229.168
E = 357,211.107

STA. 40+999.422 @ PARK AVE. =
STA. 2+749.987 @ (C) US RTE 6
GRID COORDINATES
N = 547,999.144
E = 357,122.452

STA. 40+712.310
N = 547,731.241
E = 357,019.197

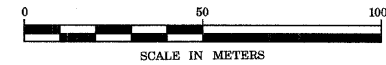
STA. 40+705.871
N = 547,725.233
E = 357,016.881

N 21°04'51" E
6.439 m

* EXTENSION BEYOND IMPROVEMENT LIMITS FOR REFERENCE PURPOSES ONLY.

NOTE: SURVEY LINE (SL) STATIONING AT GROUND CONSTRUCTION LINE (C) STATIONING AT GRID.

FOR BENCHMARK DATA SEE SHEET NO. 33



REVISIONS	
NAME	DATE

ILLINOIS DEPARTMENT OF TRANSPORTATION
US RTE 6 FROM I-294 TO IL RTE 1
ALIGNMENT, TIES AND BENCHMARKS
DIXIE HWY., WOOD ST.
AND PARK AVE,
AT-05 DRAWN BY VAP
DATE 01/28/09 CHECKED BY NAP

URS 100 S. WACKER DR., SUITE 500
CHICAGO, ILLINOIS 60606
TEL. (312) 939-1000
FAX (312) 939-4198