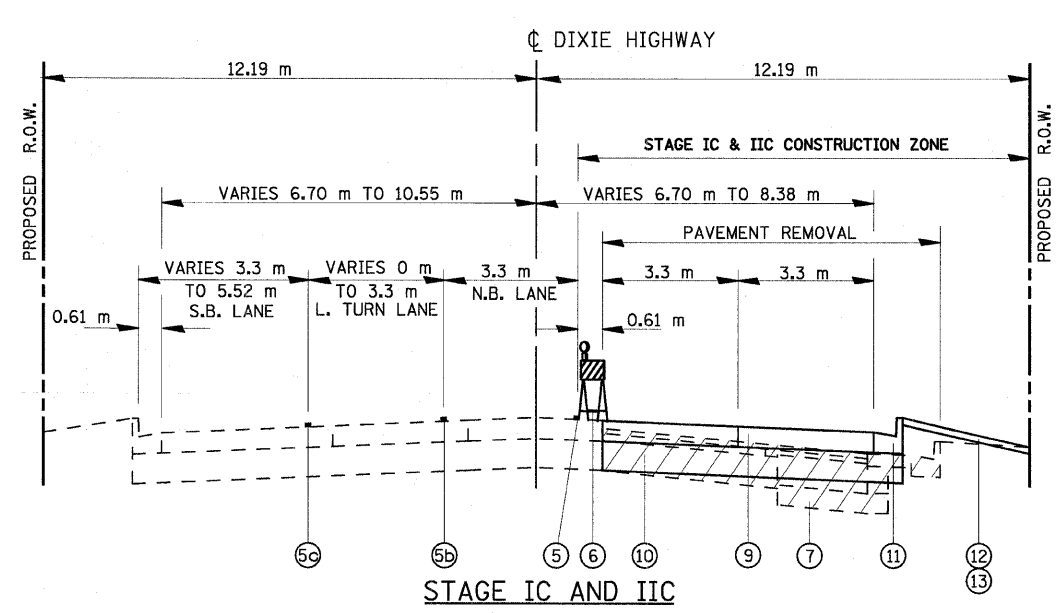
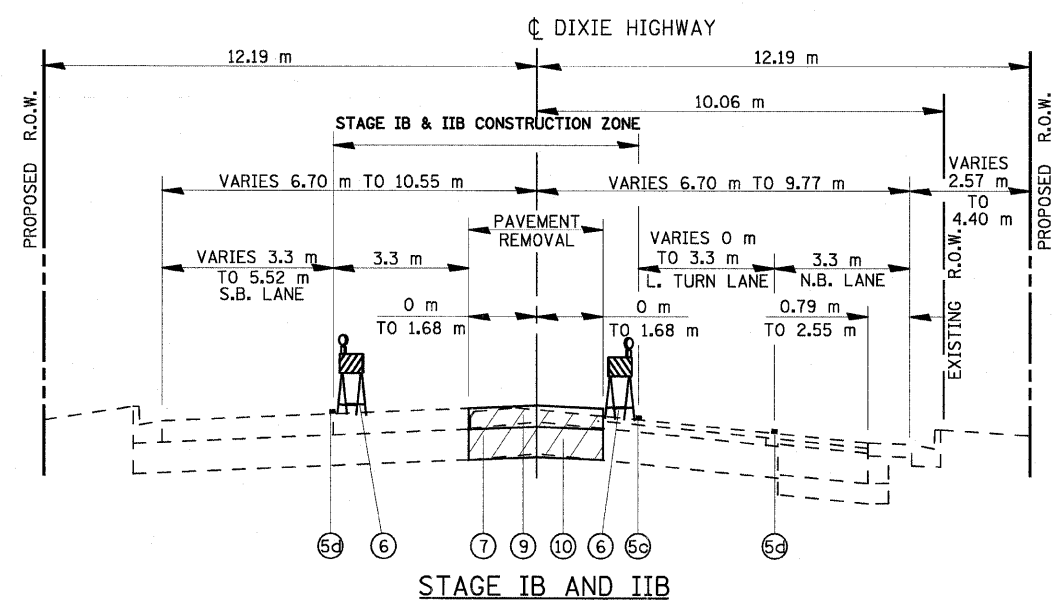
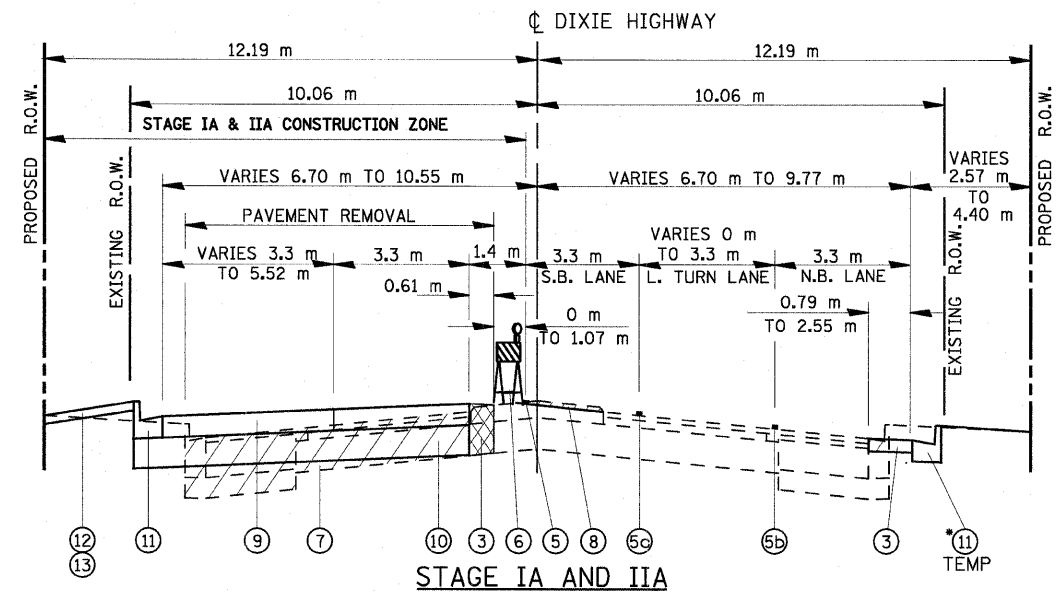


F.A.P. RTE.	SECTION	COUNTY	TOTAL SHEETS	SHEET NO.
351	3277R	COOK	541	45
STA.		TO STA.		
FED. ROAD DIST. NO.		ILLINOIS	FED. AID PROJECT	
CONTRACT NO. 60774				



LEGEND. TRAFFIC MAINTENANCE

- ③ TEMPORARY PAVEMENT
- HMA BIND CSE, IL-19.0, N50 (300 mm)
- HMA SURF CSE, MIX "D", N50 (50 mm)
- ⑤ PAVEMENT MARKING TAPE, TYPE III 100MM (WHITE)
- ⑤b PAVEMENT MARKING TAPE, TYPE III 150MM (WHITE)
- ⑤c PAVEMENT MARKING TAPE, TYPE III 100MM (DOUBLE YELLOW)
- ⑤d PAVEMENT MARKING TAPE, TYPE III 100MM (YELLOW)
- ⑥ TEMPORARY LIGHTED BARRICADE, DRUM, OR VERTICAL PANEL
- ⑦ PAVEMENT REMOVAL
- ⑧ MEDIAN REMOVAL PARTIAL DEPTH
- ⑨ PORTLAND CEMENT CONCRETE PAVEMENT 260 mm (JOINTED)
- ⑩ AGGREGATE SUBGRADE 300 mm
- ⑪ COMBINATION CONCRETE CURB AND GUTTER, TYPE B-15.60*
- ⑫ TOPSOIL FURNISH AND PLACE, 100MM
- ⑬ SODDING, SALT TOLERANT

* PROVIDE FOR DEPRESSED CURB AT LOCATIONS OF EXISTING DRIVEWAYS

SEE SHEET MT-41 FOR TEMPORARY DRAINAGE DETAILS, AND MAINTENANCE OF TRAFFIC PLAN SHEETS FOR LOCATIONS OF TEMPORARY INLETS

REVISIONS	
NAME	DATE

ILLINOIS DEPARTMENT OF TRANSPORTATION
US RTE 6 FROM I-294 TO IL RTE 1
MAINTENANCE OF TRAFFIC
TYPICAL SECTIONS

MT-09
DATE 01/28/09
DRAWN BY MRF
CHECKED BY JWK