

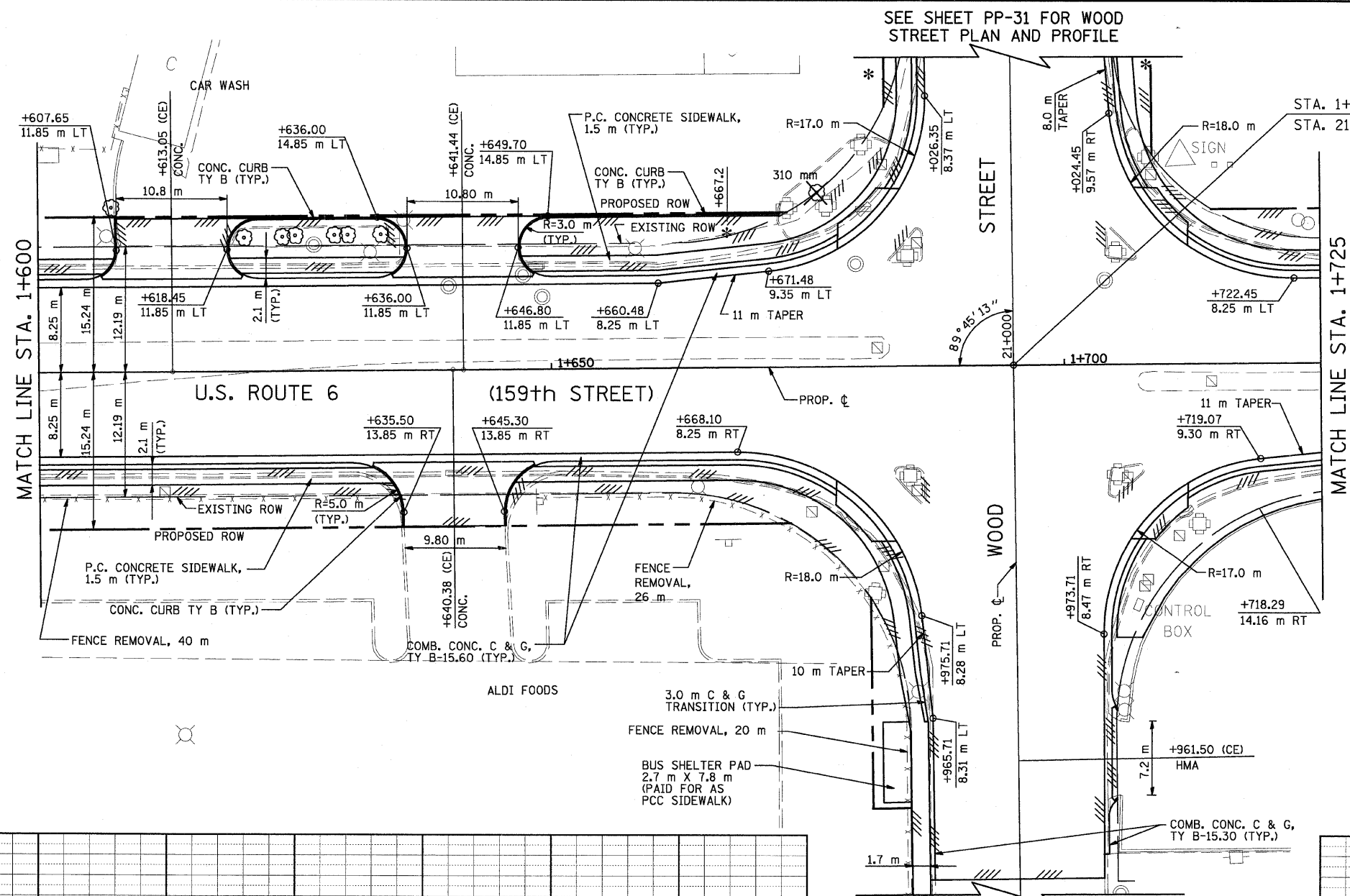
F.A.P. RTE.	SECTION	COUNTY	TOTAL SHEETS	SHEET NO.
351	3277R	COOK	541	83
STA. 1+600		TO STA. 1+725		
FED. ROAD DIST. NO.		ILLINOIS FED. AID PROJECT		

CONTRACT NO. 60774

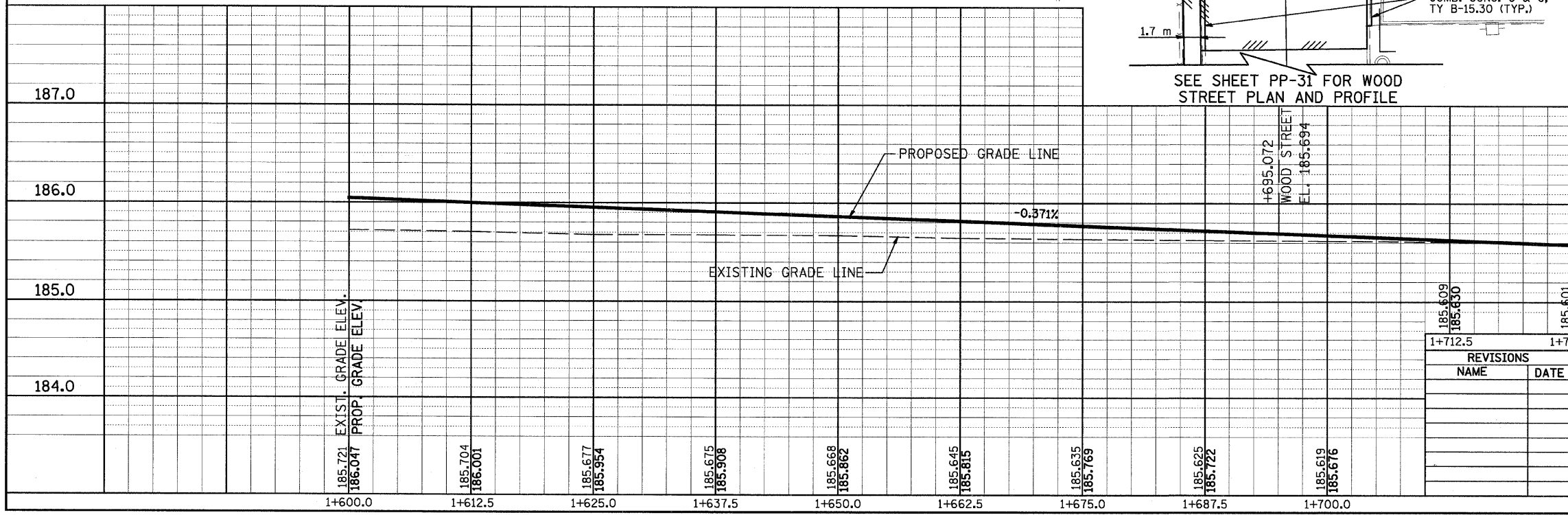
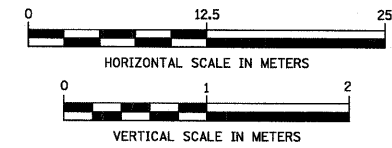
STA. 1+695.072 @ U.S. ROUTE 6 =
STA. 21+000.000 @ WOOD STREET

BY	DATE
FINAL SURVEYED	
SURVEY PLOTTED	
NOTE BOOK TEMPLATE	
AREAS CHECKED	
NO.	

BY	DATE
ORIGINAL SURVEYED	
SURVEY PLOTTED	
NOTE BOOK TEMPLATE	
AREAS CHECKED	
NO.	



- LEGEND:**
- * DRIVEWAY TO BE CLOSED
 - ⊗ TREE TO BE REPLACED
 - ⊙ TREE TO BE PROTECTED
 - /// REMOVAL



SEE SHEET PP-31 FOR WOOD STREET PLAN AND PROFILE

REVISIONS	
NAME	DATE

ILLINOIS DEPARTMENT OF TRANSPORTATION
US RTE 6 FROM I-294 TO IL RTE 1

PLAN AND PROFILE
STA. 1+600 TO STA. 1+725

PP-09 DRAWN BY VAP
DATE 01/28/09 CHECKED BY JRP