

F.A.P. RTE.	SECTION	COUNTY	TOTAL SHEETS	SHEET NO.
351	3277R	COOK	541	132
STA. 11+025		TO STA. 11+150		
FED. ROAD DIST. NO.		ILLINOIS FED. AID PROJECT		

CONTRACT NO. 60774

DRAINAGE STRUCTURE TABLE STA. 11+025 TO STA. 11+150

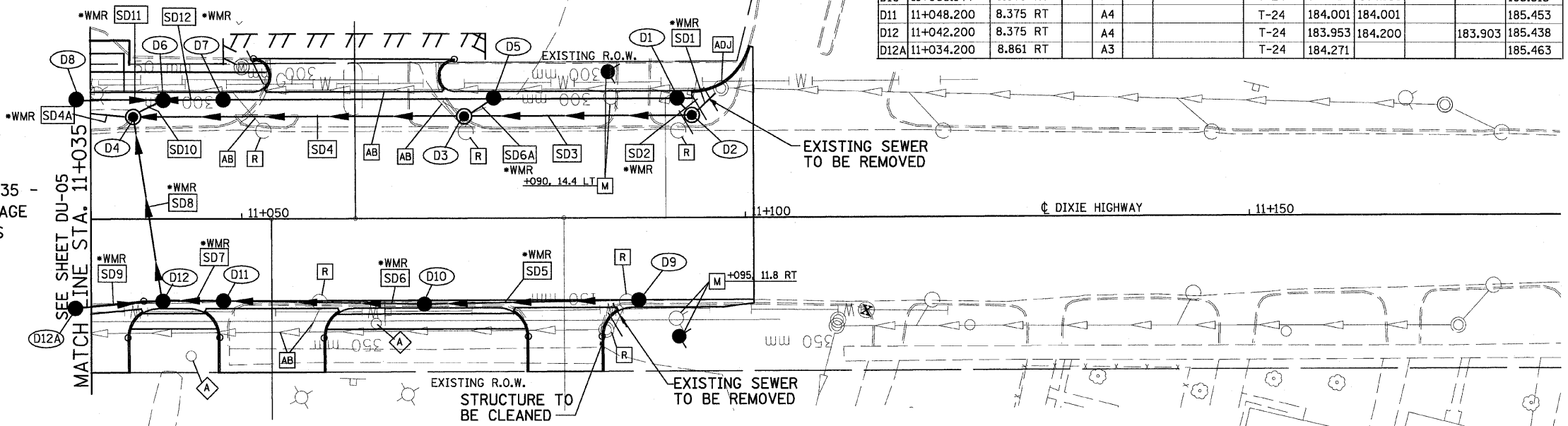
NO.	STA.	OFFSET	STRUCTURE TYPE/SIZE		FRAME & GRATE	INVERT				RIM ELEV.				
			MH	CB		INL	OTHER	N	S		E	W		
D1	11+093.325	11.575 LT		A3						T-24	184.278	185.433		
D2	11+094.716	9.975 LT	A4							T-1-CL	184.251	184.251	184.274	185.462
D3	11+072.120	9.975 LT	A4							T-1-CL	184.037	184.037	184.226	184.875
D4	11+039.000	9.975 LT	A4							T-1-CL	183.718	183.718	183.730	184.113
D5	11+075.144	11.575 LT		A3						T-24		184.256	185.471	
D6	11+042.200	11.575 LT		A4						T-24	184.136	184.136	184.136	185.370

DRAINAGE STRUCTURE TABLE STA. 11+025 TO STA. 11+150

NO.	STA.	OFFSET	STRUCTURE TYPE/SIZE		FRAME & GRATE	INVERT				RIM ELEV.				
			MH	CB		INL	OTHER	N	S		E	W		
D7	11+048.200	11.575 LT		A3						T-24		184.187	185.386	
D8	11+034.200	11.575 LT		A3						T-24	184.207		185.395	
D9	11+089.490	8.375 RT		A3						T-24		184.401	185.577	
D10	11+068.144	8.375 RT		A4						T-24	184.188	184.188	185.513	
D11	11+048.200	8.375 RT		A4						T-24	184.001	184.001	185.453	
D12	11+042.200	8.375 RT		A4						T-24	183.953	184.200	183.903	185.438
D12A	11+034.200	8.861 RT		A3						T-24	184.271		185.463	

FINAL SURVEYED BY DATE  
 SURVEY PLOTTED BY DATE  
 NOTE BOOK TEMPLATE NO.  
 AREAS CHECKED

STA. 11+025 TO STA. 11+035 -  
 SEE U.S. ROUTE 6 DRAINAGE  
 AND UTILITIES SHEETS  
 FOR PLAN DETAILS



NOTE:  
 STRUCTURE OFFSET LOCATIONS GIVEN ON  
 THE PLANS ARE TO THE FOLLOWING POINTS  
 A) FOR STRUCTURES FALLING IN THE CURB  
 LINE - TO THE EDGE OF PAVEMENT  
 B) FOR ALL OTHER STRUCTURE LOCATIONS -  
 TO THE CENTER OF THE STRUCTURE

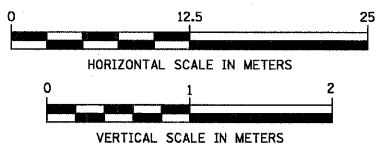
PIPE TABLE STA. 11+025 TO STA. 11+150

PIPE NO.	PIPE LOCATION		DESCRIPTION	DIA. (mm)	L (M)	S (%)	TRENCH BACKFILL VOLUME (CU M)
	FROM STR. #	TO STR. #					
SD1	EX MH	D2	SS, WMR	300	4.0	1.00	1.3
SD2	D1	D2	SS, WMR	300	1.0	1.00	0.3
SD3	D2	D3	SS T1, RCP CL IV	300	21.4	1.00	3.4
SD4	D3	D4	SS T2, RCP CL III	300	31.9	1.00	11.4
SD5	D9	D10	SS, WMR	300	20.4	1.00	7.1
SD6	D10	D11	SS, WMR	300	18.7	1.00	8.8
SD6A	D5	D3	SS, WMR	300	2.4	1.00	0.2

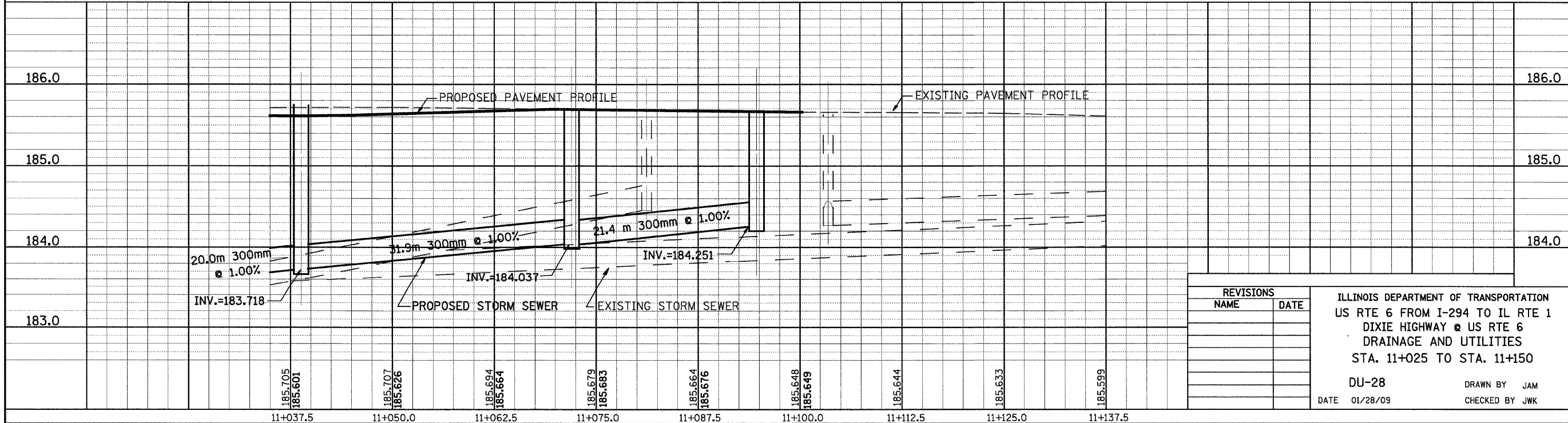
PIPE TABLE STA. 11+025 TO STA. 11+150

PIPE NO.	PIPE LOCATION		DESCRIPTION	DIA. (mm)	L (M)	S (%)	TRENCH BACKFILL VOLUME (CU M)
	FROM STR. #	TO STR. #					
SD7	D11	D12	SS, WMR	300	4.8	1.00	2.6
SD8	D12	D4	SS, WMR	300	17.3	1.00	19.2
SD9	D12A	D12	SS, WMR	300	7.1	1.00	2.3
SD10	D6	D4	SS T1, RCP CL IV	300	2.3	1.00	0.8
SD11	D8	D6	SS, WMR	300	7.1	1.00	2.3
SD12	D7	D6	SS, WMR	300	5.1	1.00	1.6

DRAINAGE TABLE LEGEND  
 A3 - TYPE C, 0.6m DIAMETER  
 A4 - TYPE A, 1.2m DIAMETER  
 A5 - TYPE A, 1.5m DIAMETER  
 A6 - TYPE A, 1.8m DIAMETER  
 A7 - TYPE A, 2.1m DIAMETER  
 \*WMR = WATER MAIN REQUIREMENTS



ORIGINAL SURVEYED BY DATE  
 SURVEY PLOTTED BY DATE  
 NOTE BOOK TEMPLATE NO.  
 AREAS CHECKED



REVISIONS

NAME	DATE

ILLINOIS DEPARTMENT OF TRANSPORTATION  
 US RTE 6 FROM I-294 TO IL RTE 1  
 DIXIE HIGHWAY @ US RTE 6  
 DRAINAGE AND UTILITIES  
 STA. 11+025 TO STA. 11+150  
 DU-28  
 DATE 01/28/09  
 DRAWN BY JAM  
 CHECKED BY JWK