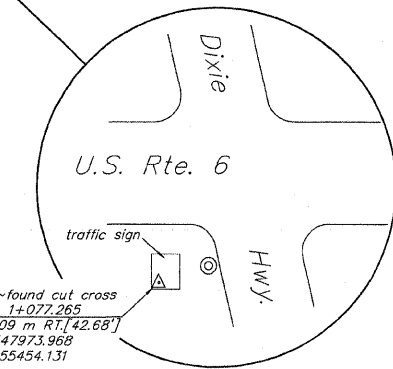
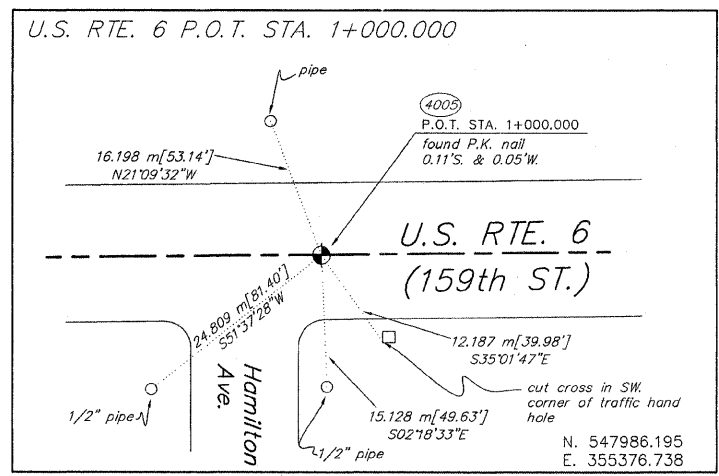
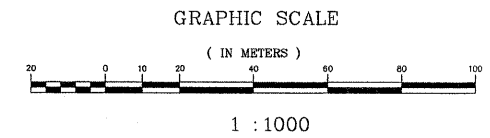
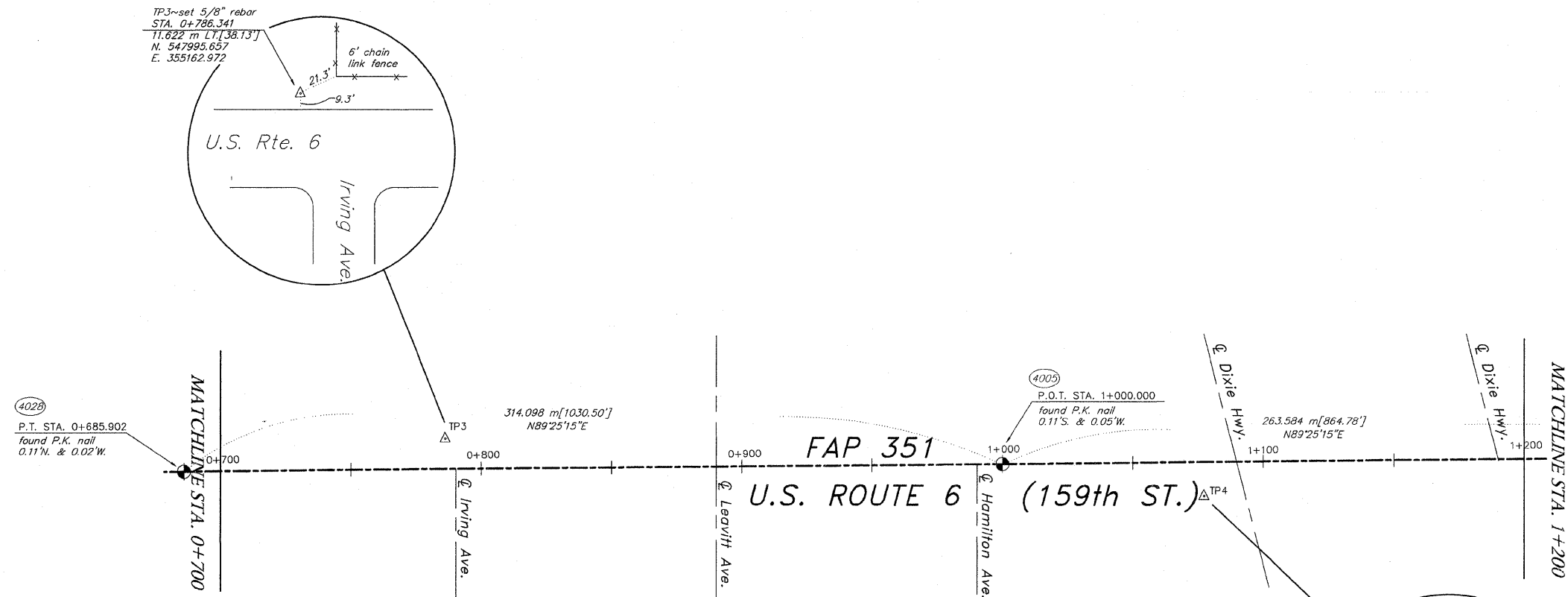


PLAT OF SURVEY

TOTAL SHEETS 541 SHEET NO. 165



NOTES:
 METRIC PROJECT COORDINATES ARE SHOWN FOR THE TRAVERSE POINTS AND CENTERLINE CONTROL MONUMENTS. COORDINATES ARE GROUND VALUES AND CAN BE CONVERTED TO GRID VALUES BY MULTIPLYING THE PUBLISHED GROUND COORDINATES BY 0.999986. COORDINATES OF CENTERLINE CONTROL ARE FOR THE COMPUTED LOCATION OF THE CONTROL POINT. POSITION OF FOUND MONUMENTS ARE REFERENCED TO THE COMPUTED POSITIONS. THE DISTANCES ARE ALSO MEASURED TO THE COMPUTED LOCATIONS OF THE CENTERLINE CONTROL POINTS.
 ALL CENTERLINE GEOMETRY, AND STATION AND OFFSETS SHOWN ABOVE ARE FOR THE PROPOSED CENTERLINE UNLESS OTHERWISE NOTED.
 ALL STATIONING IS IN METRIC UNITS. DISTANCES ARE IN FEET AND METERS. [75.29] DENOTES TYPICAL DISTANCE IN FEET. 41.774 m DENOTES TYPICAL METRIC DISTANCE.
 SEE SHEET 8 FOR SECTION LINE INFORMATION.



RECEIVED
 MAR 31 2000
 STATE OF ILLINOIS }
 COUNTY OF WILL }
 "LATS & LEGAL"

RUETTIGER, TONELLI & ASSOCIATES, INC., AN ILLINOIS PROFESSIONAL LAND SURVEYOR CORPORATION, HEREBY CERTIFIES THAT IT HAS SURVEYED THE CENTERLINE OF U.S. ROUTE 6 AS SHOWN ON THE ANNEXED PLAT, WHICH IS A TRUE AND CORRECT REPRESENTATION OF SAID SURVEY GIVEN UNDER THE CORPORATE SEAL THIS 30th DAY OF MARCH, 2000
 BY: [Signature]
 ILLINOIS PROFESSIONAL LAND SURVEYOR

SHEET 2 OF 8

RUETTIGER, TONELLI & ASSOCIATES, INC.
 Land Surveyors/Consultants/Engineers/Planners
 2174 ONDIA STREET, SUITE 170, NAPERVILLE, ILLINOIS 60563
 PH. (615) 744-6600

DATE: 3-17-00 SCALE: 1:1000 DRAWN BY: JW FIELD BOOK

ILLINOIS DEPT. OF TRANSPORTATION
 201 WEST CENTER COURT
 SCHAUMBURG, ILLINOIS 60196

DRAWING NO. 300-0161

N:\Tech\2000\0161\SR12X.dwg Thu Mar 30 10:36:11 2000 TLM

ANY DISCREPANCY IN MEASUREMENT DISCOVERED UPON THE GROUND SHOULD BE PROMPTLY REPORTED TO THE SURVEYOR FOR EXPLANATION OR CORRECTION.
 FOR BUILDING LINE AND OTHER RESTRICTIONS NOT SHOWN HEREON REFER TO YOUR ABSTRACT, DEEDS, CONTRACTS AND ZONING ORDINANCES.