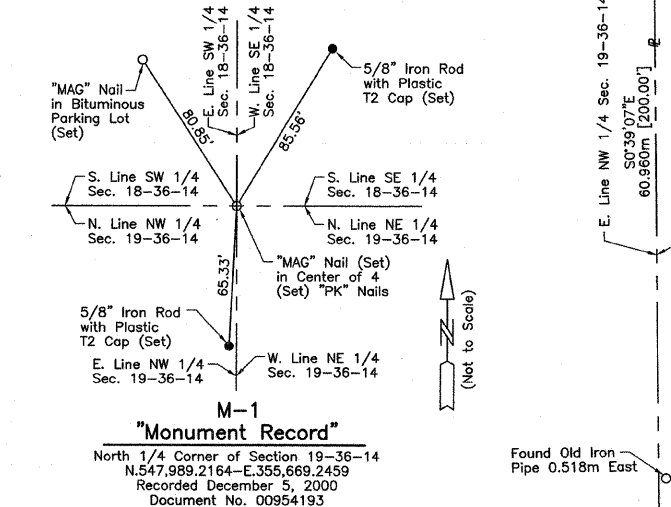


EXISTING R.O.W. RECORDED INFORMATION		
Parcel	Document No.	Date Recorded
---	1525991	August 26, 1891

Schedule of Ties			
Point Number	Tie to point	Tie Distance (meters)	Tie Distance (feet)
1	T1	10.473	34.36
	T2	7.038	23.09
	T3	9.293	30.49
2	T1	8.903	29.21
	T2	4.633	15.20
	T3	7.778	25.52

COORDINATE TABLE			
STATION	OFFSET	NORTH	EAST
0+878.400	12.192m Rt.	547,872.1949	355,508.2708
0+878.400	14.192m Rt.	547,872.6848	355,510.2099
0+887.884	12.192m Rt.	547,881.3902	355,505.9477
0+888.458	9.817m Rt.	547,881.3645	355,503.5048



PARCEL NUMBER	OWNER	TOTAL HOLDINGS ACRES	PART TAKEN ACRES	AREA IN EXISTING R.O.W. ACRES	REMAINDER AREA ACRES	EASEMENT AREA SQUARE FEET	EASEMENT PURPOSE	PERMANENT INDEX NUMBER	PROPERTY ACQUIRED BY
ODE0006	Chicago City Bank and Trust Company, as Trustee, under a Trust Agreement dated the 15th day of December, 1988 and known as Trust Number 11441.	2.023	0.015	N/A	2.008	N/A	N/A	29-19-106-013	
ODE0007	Ollie Banks	1.517	0.037	N/A	1.480	A=0.005 B=0.007	Driveway Construction Driveway Construction	29-19-106-011 29-19-106-014	

LEGEND

SECTION CORNER: 9 10 16 15

QUARTER SECTION CORNER: 16 15

SECTION LINE
QUARTER SECTION LINE
QUARTER SECTION LINE
PLATTED LOT LINE
PROPERTY (DEED) LINE

APL: APPARENT PROPERTY LINE
CENTER LINE
EXISTING RIGHT OF WAY LINE
PROPOSED RIGHT OF WAY LINE
PROPOSED EASEMENT
MEASURED DIMENSION
COMPUTED DIMENSION
RECORD DATA U.S. FOOT
MEASURED DIMENSION U.S. FOOT

EXISTING BUILDING

Scale: 1:250

Bearings are referenced to the Illinois State Plane Coordinate Grid System, NAD83, East Zone, as provided by the Illinois Department of Transportation.

STATE OF ILLINOIS }
COUNTY OF LAKE } SS

THIS IS TO CERTIFY THAT WE, JORGENSEN & ASSOCIATES, INC., AN ILLINOIS PROFESSIONAL LAND SURVEYOR CORPORATION, NUMBER 48-80, HAVE SURVEYED THE METRIC PLAT OF HIGHWAYS SHOWN HEREON IN SECTION 19, TOWNSHIP 36N., RANGE 14E., OF THE THIRD PRINCIPAL MERIDIAN, COOK COUNTY, THAT THE SURVEY IS TRUE AND COMPLETE AS SHOWN TO THE BEST OF MY KNOWLEDGE AND BELIEF. THAT THE PLAT CORRECTLY REPRESENTS SAID SURVEY, THAT ALL MONUMENTS FOUND AND ESTABLISHED ARE OF PERMANENT QUALITY AND OCCUPY THE POSITIONS SHOWN THEREON AND THAT THE MONUMENTS ARE SUFFICIENT TO ENABLE THE SURVEY TO BE RETRACED. MADE FOR THE DEPARTMENT OF TRANSPORTATION, STATE OF ILLINOIS.

DATED AT LAKE VILLA, ILLINOIS THIS 14th DAY OF December 2020 A.D.

CHRISTIAN H. JORGENSEN
PRESIDENT
ILLINOIS PROFESSIONAL LAND SURVEYOR NO. 35-2797

NOTE: COORDINATES ARE GROUND VALUES AND CAN BE CONVERTED TO GRID VALUES BY MULTIPLYING THE PUBLISHED GROUND COORDINATES BY 0.999988.

STATION	OFFSET	NORTH	EAST
0+784.522	10.335m Lt.	547,775.6589	355,509.4250
0+793.483	9.785m Rt.	547,789.2752	355,526.7371
0+800.000	9.787m Rt.	547,795.5941	355,525.1429
0+800.000	12.192m Rt.	547,796.1831	355,527.4744
0+805.215	10.328m Lt.	547,795.7236	355,504.3631
0+825.146	12.192m Rt.	547,820.5634	355,521.3150
0+825.725	9.796m Rt.	547,820.5375	355,518.8502
0+844.700	12.192m Rt.	547,839.5215	355,516.5254
0+844.700	14.192m Rt.	547,840.0114	355,518.4645
0+854.700	12.192m Rt.	547,849.2168	355,514.0760
0+854.700	14.192m Rt.	547,849.7067	355,516.0150
0+863.400	12.192m Rt.	547,857.6518	355,511.9450
0+863.400	14.192m Rt.	547,858.1417	355,513.8840

BY	DATE
MADE	
CHECKED	
INKED	
NOTEBOOK	
NO	

GARNETT & LORD'S RESUBDIVISION OF BLOCK 1 IN ADELAIDE SPEIGHT'S SUBDIVISION as Document No. 1852239 Recorded April 19, 1893

See Sheet A2 for Parcels ODE0003, ODE0004 & ODE0005

ADELAIDE SPEIGHT'S SUBDIVISION Recorded August 26, 1891 as Document No. 1525991

REVISION DATE July 10, 2006

REVISION Changed Parcels ODE0007E.-A & B to ODE3007E.-A & B

MADE BY

METRIC PLAT OF HIGHWAYS
STATE OF ILLINOIS
DEPARTMENT OF TRANSPORTATION
F.A.P. 351 (U.S. ROUTE 6/159TH STREET)
SECTION COOK COUNTY
PROJECT JOB NO. R-90-011-99
STATION 0+708.463 TO STATION 0+900
SCALE: 1:250/1"=6.35 SHEET A3 OF A15

BUREAU OF LAND ACQUISITION
201 WEST CENTER COURT
SCHAUMBURG, ILLINOIS 60196

RECEIVED
AUG 9 2006
PLATS & LEGALS

JORGENSEN & ASSOCIATES, INC.
120 PARK AVENUE
LAKE VILLA, ILLINOIS 60046
(847) 356-3371