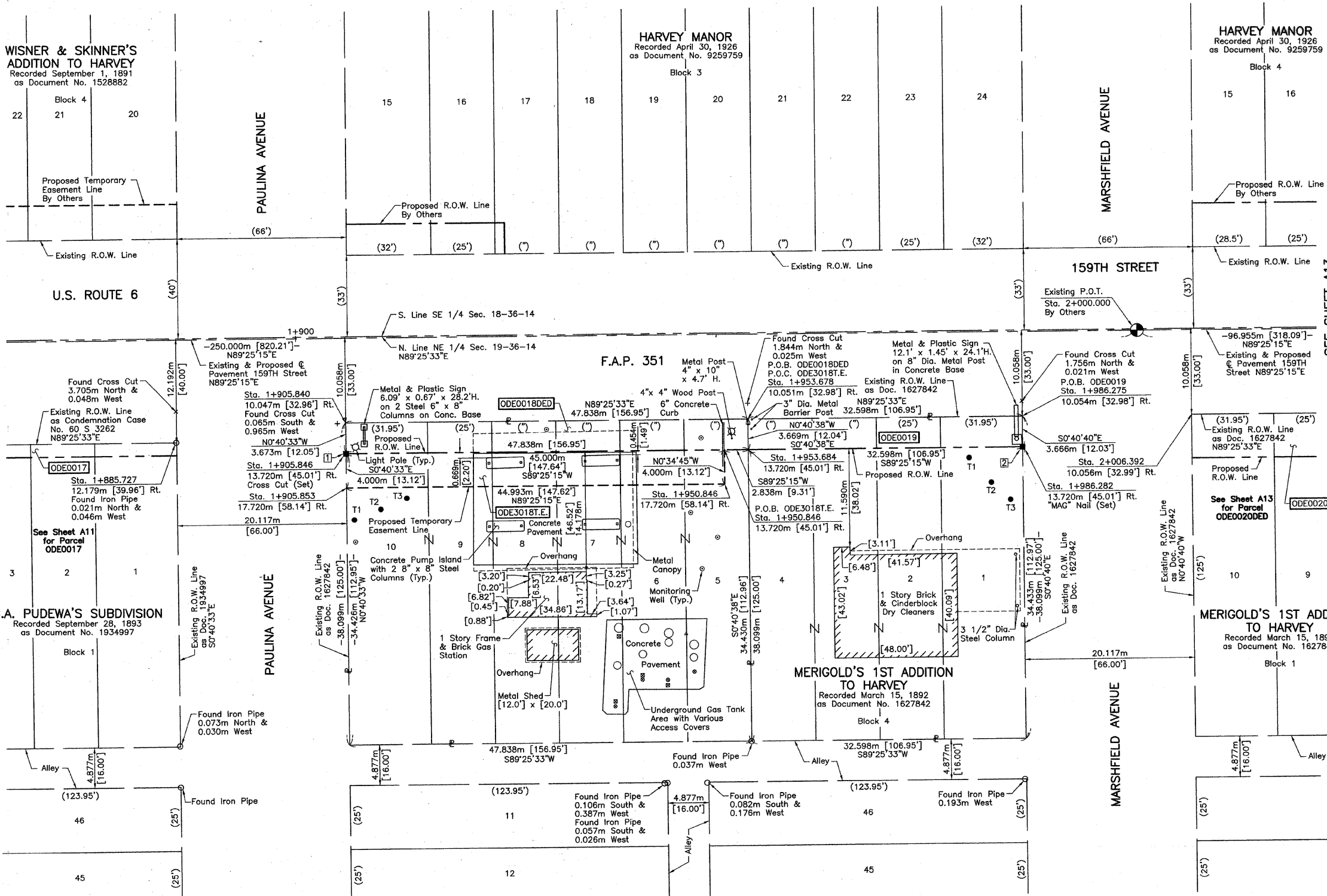


PARCEL NUMBER	OWNER	TOTAL HOLDINGS ACRES	PART TAKEN ACRES	AREA IN EXISTING R.O.W. ACRES	REMAINDER AREA ACRES	EASEMENT AREA ACRES	EASEMENT PURPOSE	PERMANENT INDEX NUMBER	PROPERTY ACQUIRED BY
ODE0018DED ODE3018T.E.	Multi Enterprises, Inc.	0.450	0.043*	N/A	0.450	0.044	Driveway Construction	29-19-205-001 29-19-205-002 29-19-205-003 29-19-205-004 29-19-205-005 29-19-205-006	
ODE0019	Ricky Ehman, as Trustee of the Ricky Ehman Declaration of Trust, as to an undivided 50% interest and Gregory Ehman, as Trustee of the Gregory Ehman Declaration of Trust, as to an undivided 50% interest	0.307	0.030	N/A	0.277	N/A	N/A	29-19-205-007 29-19-205-008 29-19-205-009 29-19-205-010	

EXISTING R.O.W. RECORDED INFORMATION		
Parcel	Document No.	Date Recorded
ODE0018DED	1627842	March 15, 1892
ODE0019	1627842	March 15, 1892
-----	1627842	March 15, 1892
-----	1934997	September 28, 1893
-----	60 S 3262	*June 20, 1960

Schedule of Ties			
Point Number	Tie to point	Tie Distance (meters)	Tie Distance (feet)
1	T1	7.861	25.79
	T2	7.766	25.48
	T3	8.925	29.28
2	T1	6.474	21.24
	T2	5.556	18.23
	T3	6.340	20.80

All Ties to Point No. 1 are a Cross Cut in Concrete Pavement (Set).
All Ties to Point No. 2 are a "MAG" Nail in Bituminous Parking Lot (Set).



HARVEY MANOR
Recorded April 30, 1926
as Document No. 9259759
Block 4

HARVEY MANOR
Recorded April 30, 1926
as Document No. 9259759
Block 3

WISNER & SKINNER'S
ADDITION TO HARVEY
Recorded September 1, 1891
as Document No. 1528882
Block 4

U.S. ROUTE 6
(40')

PAULINA AVENUE
(66')

MARSHFIELD AVENUE
(66')

159TH STREET
(33')

SEE SHEET A11

SEE SHEET A13

STATE OF ILLINOIS }
COUNTY OF LAKE }

THIS IS TO CERTIFY THAT WE, JORGENSEN & ASSOCIATES, INC., AN ILLINOIS PROFESSIONAL LAND SURVEYOR CORPORATION, NUMBER 48-80, HAVE SURVEYED THE METRIC PLAT OF HIGHWAYS SHOWN HEREON IN SECTION 19, TOWNSHIP 36 N., RANGE 14 E., OF THE THIRD PRINCIPAL MERIDIAN, COOK COUNTY, THAT THE SURVEY IS TRUE AND COMPLETE AS SHOWN TO THE BEST OF MY KNOWLEDGE AND BELIEF, THAT THE PLAT CORRECTLY REPRESENTS SAID SURVEY, THAT ALL MONUMENTS FOUND AND ESTABLISHED ARE OF PERMANENT QUALITY AND OCCUPY THE POSITIONS SHOWN THEREON AND THAT THE MONUMENTS ARE SUFFICIENT TO ENABLE THE SURVEY TO BE RETRACED. MADE FOR THE DEPARTMENT OF TRANSPORTATION, STATE OF ILLINOIS.
DATED AT LAKE VILLA, ILLINOIS THIS 15th DAY OF December 20 2000 A.D.



Christian H. Jorgensen
PRESIDENT
ILLINOIS PROFESSIONAL LAND SURVEYOR NO. 35-2797

NOTE: COORDINATES ARE GROUND VALUES AND CAN BE CONVERTED TO GRID VALUES BY MULTIPLYING THE PUBLISHED GROUND COORDINATES BY 0.999988.

COORDINATE TABLE				
STATION	OFFSET	NORTH	EAST	
1+885.727	12.179m Rt.	547,982.9702	356,262.5429	
1+905.840	10.047m Rt.	547,985.3053	356,282.6636	
1+905.846	13.720m Rt.	547,981.6323	356,282.6769	
1+905.853	13.720m Rt.	547,977.6326	356,282.7241	
1+950.846	13.720m Rt.	547,982.0872	356,327.6746	
1+950.846	17.720m Rt.	547,978.0874	356,327.7150	
1+953.678	10.051m Rt.	547,985.7847	356,330.4687	
1+953.684	13.720m Rt.	547,982.1159	356,330.5121	
1+986.275	10.054m Rt.	547,986.1114	356,363.0649	
1+986.282	13.720m Rt.	547,982.4454	356,363.1083	
2+006.392	10.056m Rt.	547,986.3130	356,383.1808	

DATE	BY	MADE	CHECKED	IN	NO.

G.A. PUDEWA'S SUBDIVISION
Recorded September 28, 1893
as Document No. 1934997
Block 1

MERIGOLD'S 1ST ADDITION
TO HARVEY
Recorded March 15, 1892
as Document No. 1627842
Block 1

August 21, 2006
July 10, 2006
May 25, 2001
REVISION DATE

Ownership Parcel ODE0018
Changed Parcel ODE0018T.E. to ODE3018T.E.
Ownership Parcel ODE0019
REVISION

MADE BY

JORGENSEN & ASSOCIATES, INC.
120 PARK AVENUE
LAKE VILLA, ILLINOIS 60046
(847) 356-3371

RECEIVED
AUG 9 2006
PLATS & LEGALS

METRIC PLAT OF HIGHWAYS
STATE OF ILLINOIS
DEPARTMENT OF TRANSPORTATION
F.A.P. 351 (U.S. ROUTE 6/159TH STREET)
SECTION COOK COUNTY
PROJECT JOB NO. R-90-011-99
STATION 1+850 TO STATION 2+000
SCALE: 1:250/1"=6.35 SHEET A12 OF A15

BUREAU OF LAND ACQUISITION
201 WEST CENTER COURT
SCHAUMBURG, ILLINOIS 60196