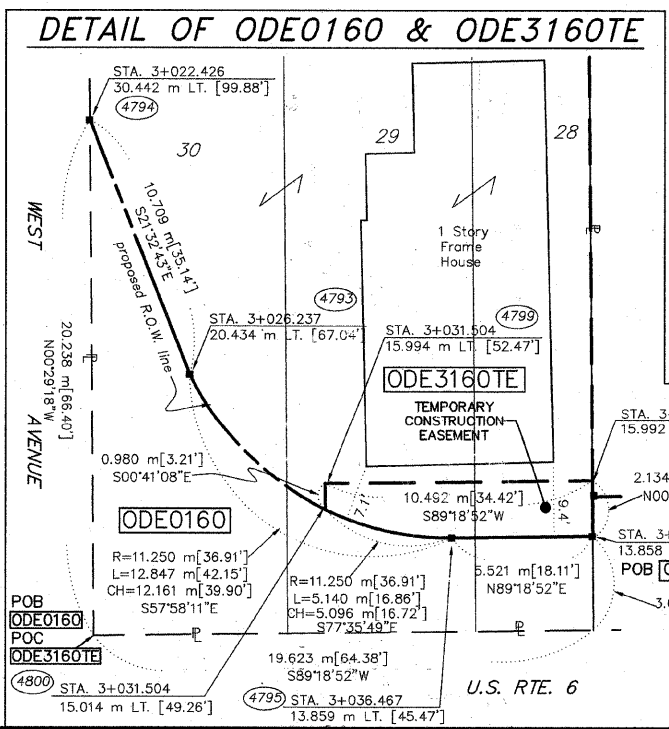
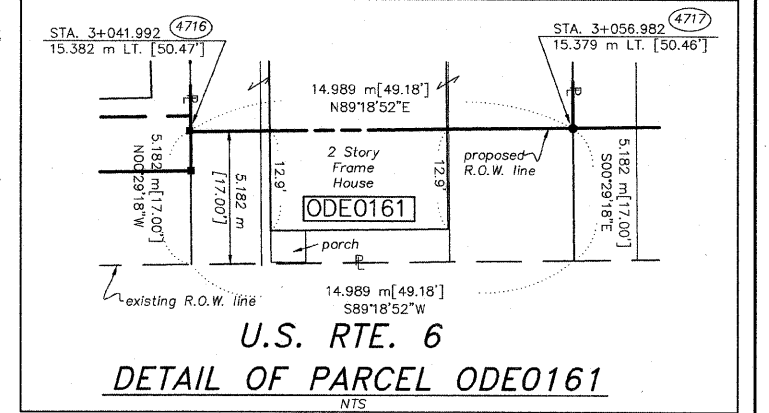
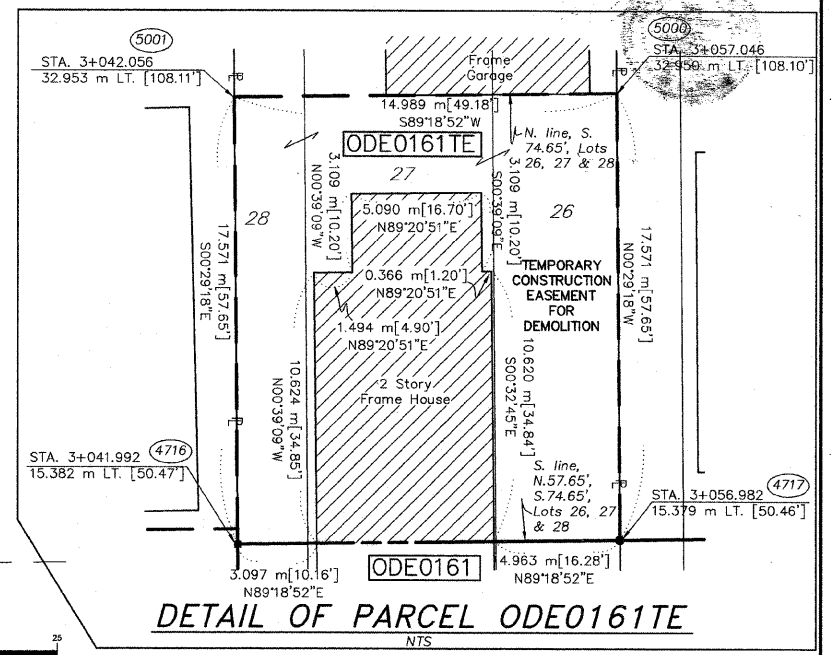
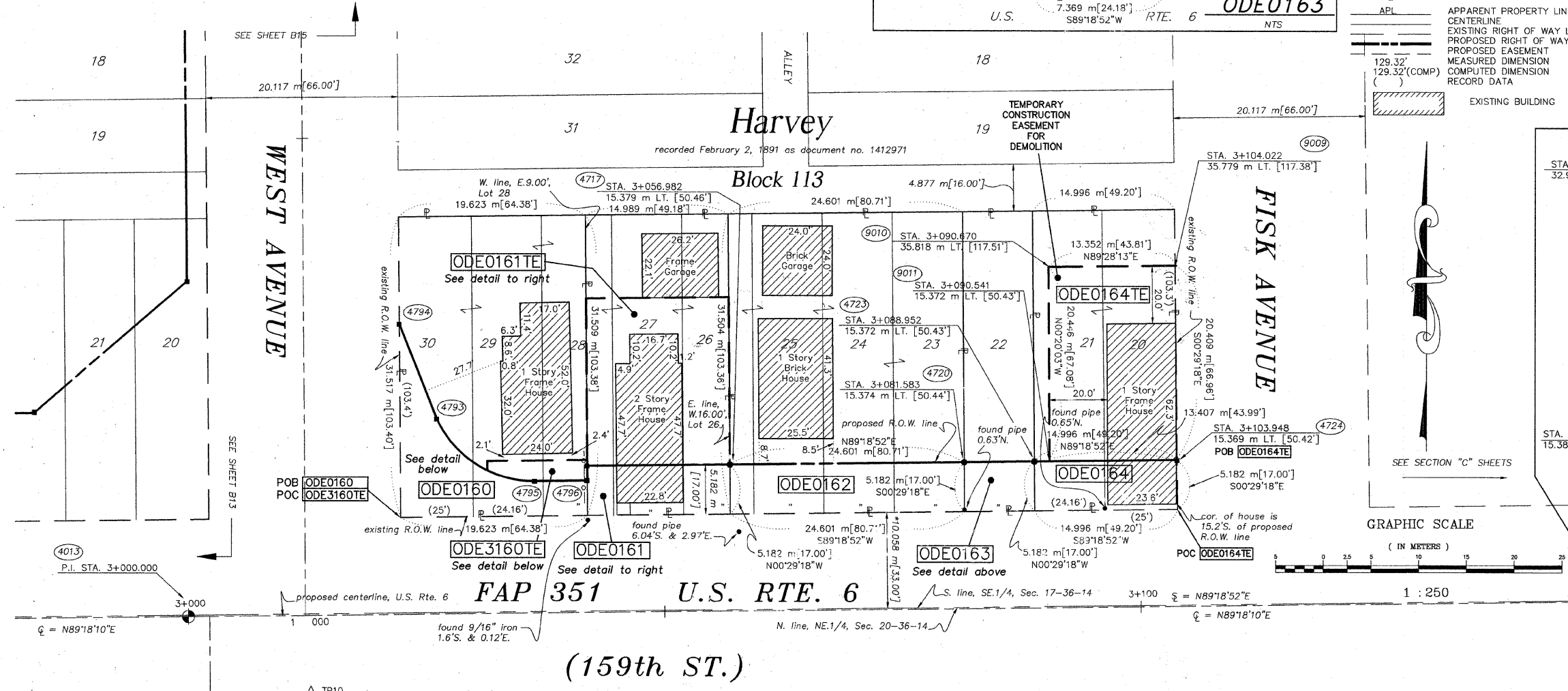
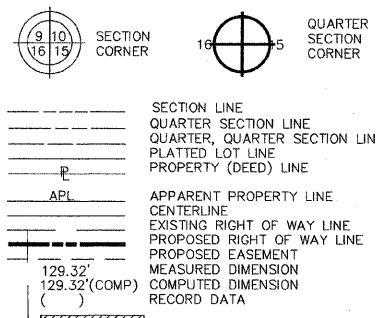
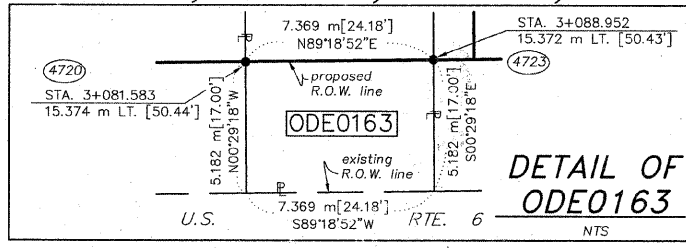


PART OF THE NE.1/4 OF SEC. 20 AND THE SE.1/4 OF SEC. 17, T.36N., R.14E., OF THE 3rd P.M., IN COOK COUNTY, ILLINOIS.

TOTAL SHEETS 541 SHEET NO. 202



PARCEL NO.	OWNER	TOTAL HOLDING ACRES m ²	PART TAKEN ACRES m ²	REMAINDER ACRES m ²	PREV. DED. ACRES m ²	EASEMENT ACRES m ²	EASEMENT PURPOSE	PERMANENT TAX INDEX NUMBER	PROPERTY ACQUIRED BY
ODE0160	VIRGIL DONALDSON, GERALD A. & OREL DONALDSON	0.153 618	0.033 135	0.120 483	N/A	N/A	N/A	29-17-413-039	
ODE3160	VIRGIL DONALDSON, GERALD A. & OREL DONALDSON	0.120 483	N/A	0.120 483	N/A	0.005 209 s.f.	GRADING	29-17-413-039	
ODE0151	JESUS GAVINO & JAMES GAVINO	0.117 472	0.019 78	0.098 394	N/A	0.043 174	DEMOLITION	29-17-413-040 29-17-413-053	
ODE0162	ANTONIA MAGANA & JOSE JESUS MAGANA & ANTONIO PEREZ	0.192 775	0.032 127	0.160 648	N/A	N/A	N/A	29-17-413-074 29-17-413-075	
ODE0163	ROCHIE SURLS & JANICE SURLS	0.057 232	0.009 38 411 s.f.	0.048 194	N/A	N/A	N/A	29-17-413-045	
ODE0164	ODIES WALKER	0.116 470	0.019 78	0.097 392	N/A	0.068 273	DEMOLITION	29-17-413-046 29-17-413-047	

* DENOTES THE DISTANCE FROM THE RIGHT OF WAY LINE TO THE 1/4 SECTION LINE. CENTERLINE IS NOT COINCIDENT WITH 1/4 SECTION LINE AT LABEL POSITION.

SEE SHEETS 16-23 FOR COORDINATE DATA AND REFERENCE TIES.

RUETTIGER, TONELLI & ASSOCIATES, INC.
Land Surveyors/Engineers/Planners/Landscape Architects/G.I.S. Consultants
2174 ONDIA STREET, SUITE 110, NAPERVILLE, ILLINOIS 60563
PH: (630) 744-8500 FAX: (630) 744-0101

PLAT OF HIGHWAYS
STATE OF ILLINOIS
DEPARTMENT OF TRANSPORTATION
FAP 351 U.S. RTE. 6 (159th ST.)
SECTION COOK COUNTY
PROJECT JOB NO. R90-011-99
STATION 3+000 TO STATION 3+105
SCALE: 1:250 SHEET B14 OF B23

BUREAU OF LAND ACQUISITION
201 WEST CENTER COURT
SCHAUMBURG, ILLINOIS 60196

STATE OF ILLINOIS }
COUNTY OF WILL }
THIS IS TO CERTIFY THAT RUETTIGER, TONELLI & ASSOCIATES, INC., AN ILLINOIS DESIGN FIRM, HAS SURVEYED THE PLAT OF HIGHWAYS SHOWN HEREON BETWEEN SECTION 17, TOWNSHIP 36 NORTH, RANGE 14 EAST, AND SECTION 20, TOWNSHIP 36 NORTH, RANGE 14 EAST OF THE THIRD PRINCIPAL MERIDIAN, LAKE COUNTY; THAT THE SURVEY IS TRUE AND COMPLETE AS SHOWN TO THE BEST OF MY KNOWLEDGE AND BELIEF; THAT THE PLAT CORRECTLY REPRESENTS SAID SURVEY, THAT ALL MONUMENTS FOUND AND ESTABLISHED ARE OF PERMANENT QUALITY AND OCCUPY THE POSITIONS SHOWN THEREON AND THAT THE MONUMENTS ARE SUFFICIENT TO ENABLE THE SURVEY TO BE RETRACED. MADE FOR THE DEPARTMENT OF TRANSPORTATION, STATE OF ILLINOIS.
DATED AT CHICAGO, ILLINOIS THIS 19th DAY OF February, 2007 A.D.
RONALD F. HOEGBEN P.L.S. NO. 2630
MY LICENSE EXPIRES 11-30-2008



REVISION DATE 5-18-06 REVISION REVISED TO PARCEL NO. MADE BY JMH