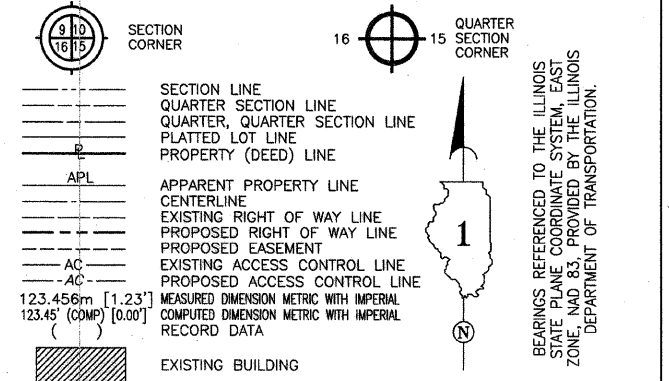


PROPOSED ROW TIE DIAGRAMS, FAP 351 (U.S. 6)

LEGEND



COORDINATE VALUES
 METRIC PROJECT COORDINATES ARE GROUND VALUES AND CAN BE CONVERTED TO GRID VALUES BY MULTIPLYING THE PUBLISHED GROUND COORDINATES BY 0.999988, PROVIDED BY THE ILLINOIS DEPARTMENT OF TRANSPORTATION.

DATA POINT NO.	STATION	OFFSET	--N-- COORDINATES --E--	
1549	3+466.322	12.191 m L	548,026.5441	357,842.7497
1567	3+669.515	15.233 m L	548,031.9281	358,045.9086
1551	3+470.025	10.113 m L	548,024.5118	357,846.4777
1550	3+470.030	12.190 m L	548,026.5885	357,846.4576
1553	3+500.000	10.107 m L	548,024.8705	357,876.4505
1554	3+500.010	13.765 m L	548,028.5279	357,876.4159
1555	3+510.731	13.763 m L	548,028.6562	357,887.1369
1556	3+530.848	13.758 m L	548,028.8970	357,907.2524
1558	3+550.003	10.713 m L	548,026.0785	357,926.4539
1557	3+550.009	13.761 m L	548,029.1264	357,926.4256
1559	3+553.141	10.715 m L	548,026.1161	357,929.5915
1560	3+563.002	10.724 m L	548,026.2341	357,939.4515
1561	3+563.004	12.004 m L	548,027.5142	357,939.4398
1562	3+597.257	12.033 m L	548,027.9241	357,973.6905
1563	3+597.264	15.248 m L	548,031.1396	357,973.6620
1564	3+612.224	15.261 m L	548,031.3187	357,988.6208
1565	3+632.341	15.202 m L	548,031.4832	358,008.7370
1566	3+654.748	15.220 m L	548,031.7513	358,031.1426

TIE #	DESCRIPTION
2128	S.E. CORNER BRICK BLDG
2129	W. EDGE OF METAL DIVIDER SEPARATING BAYS
2130	N.W. CORNER BRICK BLDG AND JOG
2167	S.E. CORNER BRICK BLDG AND FOUNDATION CORNER
2169	N.E. CORNER BRICK BLDG
2171	MAG NAIL IN S'LY FACE OF POWER POLE
2173	MAG NAIL IN S'LY FACE OF POWER POLE
2174	CHISELED CROSS IN 1" BOLT IN 6" X 6" BEAM FOR ELEC.
2175	S.W. CORNER BRICK WALL AT BLDG CORNER
2195	S.E. CORNER BRICK BLDG
2196	CENTER OF 3 MAG NAILS IN ASPHALT PARKING
2197	CUT CROSS IN SOUTHERN MOST GUARD POST
2198	CUT CROSS ON S'LY FACE OF FENCE POST
2199	MAG NAIL S'LY FACE 26" TREE
2200	MAG NAIL S'LY FACE 21" TREE
2201	S.W. CORNER OF N.W. CORNER OF BRICK BLDG
2202	N.E. CORNER OF ST. LIGHT CONTROL BOX BASE
2213	MAG NAIL IN S'LY FACE OF POWER POLE
2214	MAG NAIL IN S'LY FACE OF POWER POLE
2215	CENTER OF 3 MAG NAILS SET IN ASPHALT
2216	S.W. CORNER OF BRICK BLDG
2217	N.W. CORNER OF BRICK BLDG

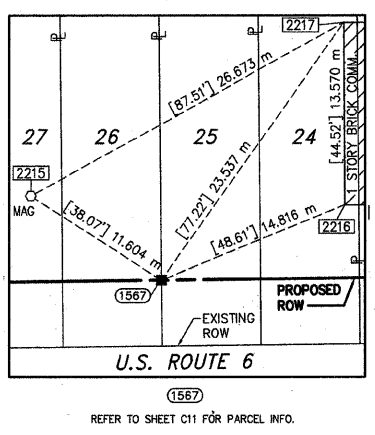
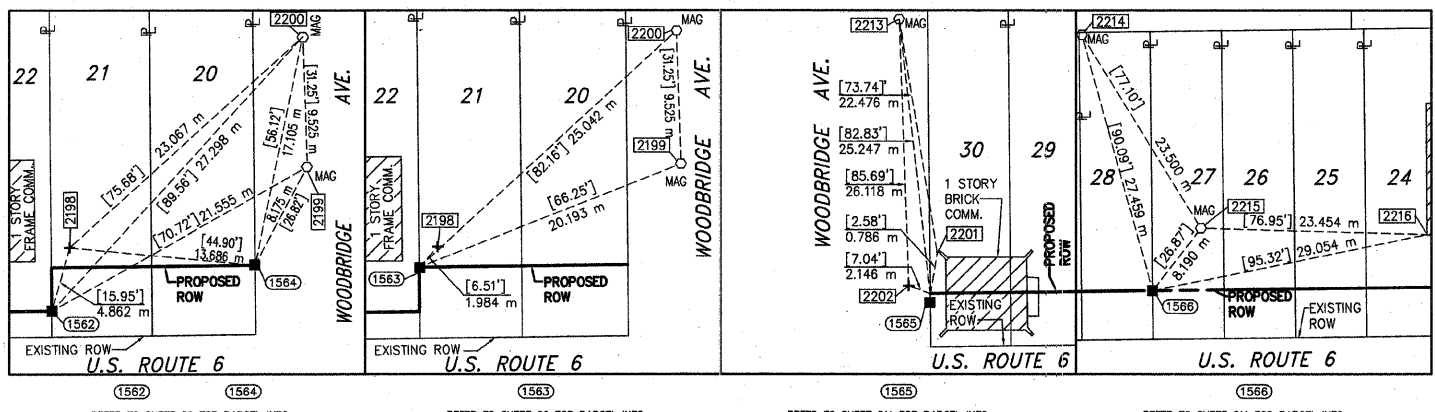
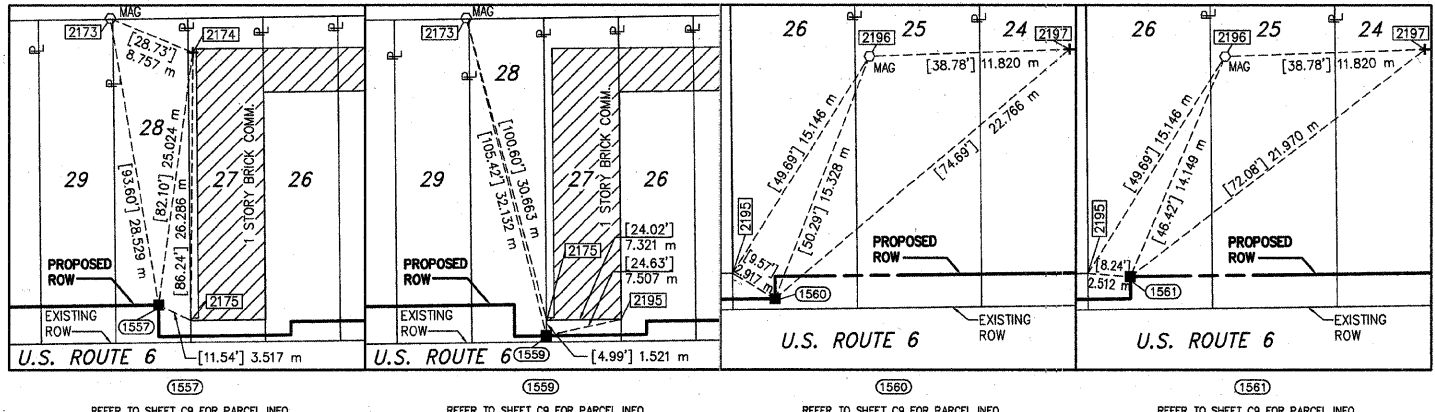
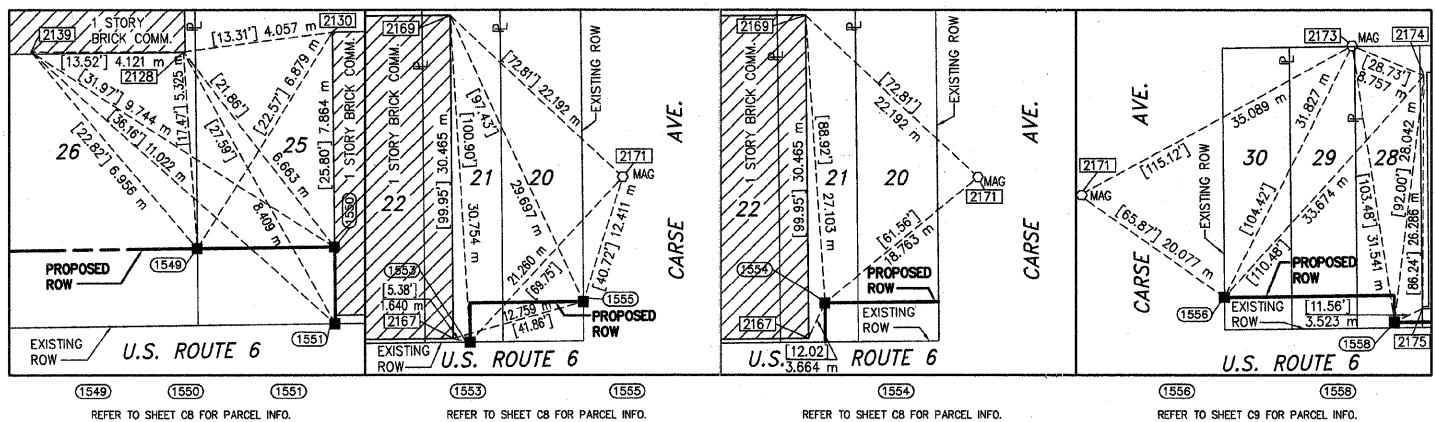
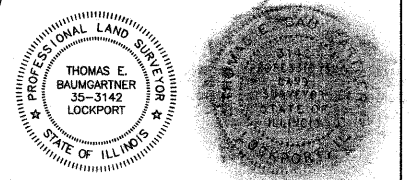
STATE OF ILLINOIS }
 COUNTY OF WILL } SS

THIS IS TO CERTIFY THAT I, THOMAS E. BAUMGARTNER, AN ILLINOIS PROFESSIONAL LAND SURVEYOR, HAVE SURVEYED THE PLAT OF HIGHWAYS SHOWN HEREON BETWEEN SECTIONS 17 AND 20, TOWNSHIP 39 NORTH, RANGE 10 EAST, AND SECTIONS 16 AND 21, TOWNSHIP 39 NORTH, RANGE 10 EAST OF THE THIRD PRINCIPAL MERIDIAN, COOK COUNTY; THAT THE SURVEY IS TRUE AND COMPLETE AS SHOWN TO THE BEST OF MY KNOWLEDGE AND BELIEF; THAT THE PLAT CORRECTLY REPRESENTS SAID SURVEY; THAT ALL MONUMENTS FOUND AND ESTABLISHED ARE OF PERMANENT QUALITY AND OCCUPY THE POSITIONS SHOWN THEREON AND THAT THE MONUMENTS ARE SUFFICIENT TO ENABLE THE SURVEY TO BE RETRACED. MADE FOR THE DEPARTMENT OF TRANSPORTATION, STATE OF ILLINOIS.

DATED AT LOCKPORT, ILLINOIS THIS 26TH DAY OF MARCH 2002 A.D.

Baird & Company
 - LAND SURVEYORS -
 AT THE HISTORIC RAILROAD DEPOT
 133 WEST THIRTEENTH STREET
 LOCKPORT, ILLINOIS 60441

THOMAS E. BAUMGARTNER
 ILLINOIS PROFESSIONAL LAND SURVEYOR NO. 3142
 LICENSE EXPIRES 11/30/04



PRINTING DATE: JANUARY 22, 2003 2:00 PM

PLAT OF HIGHWAYS
 STATE OF ILLINOIS
 DEPARTMENT OF TRANSPORTATION
 ROUTE FAP 351 (U.S. 6)

SECTION PROJECT COOK COUNTY
 STATION JOB NO. R-90-001-99
 SCALE: NO SCALE TO STATION
 SHEET C21 OF

BUREAU OF LAND ACQUISITION
 201 WEST CENTER COURT
 SCHAUMBURG, ILLINOIS 60196-1096