



STS Consultants Ltd.
Consulting Engineers
STS PROJECT NO.: 32646

DRAWN BY	CJD	4-10-02
CHECKED BY	SEK	4-10-02
APPROVED BY	TDB	4-10-02

BY	DATE
FINAL SURVEY	
SURVEY PLOTTED	
NOTE BOOK TEMPLATE	
AREAS CHECKED	

BY	DATE
ORIGINAL SURVEY	
SURVEY PLOTTED	
NOTE BOOK TEMPLATE	
AREAS CHECKED	

LEGEND

B-43 BORING PERFORMED BY STS CONSULTANTS LTD. (FEB. 2002)

B-43 BORING NO.

N, Qp (kPa) s, 175 22.1, 200 WATER CONTENT (%), Qu (kPa)

WATER LEVEL DURING DRILLING

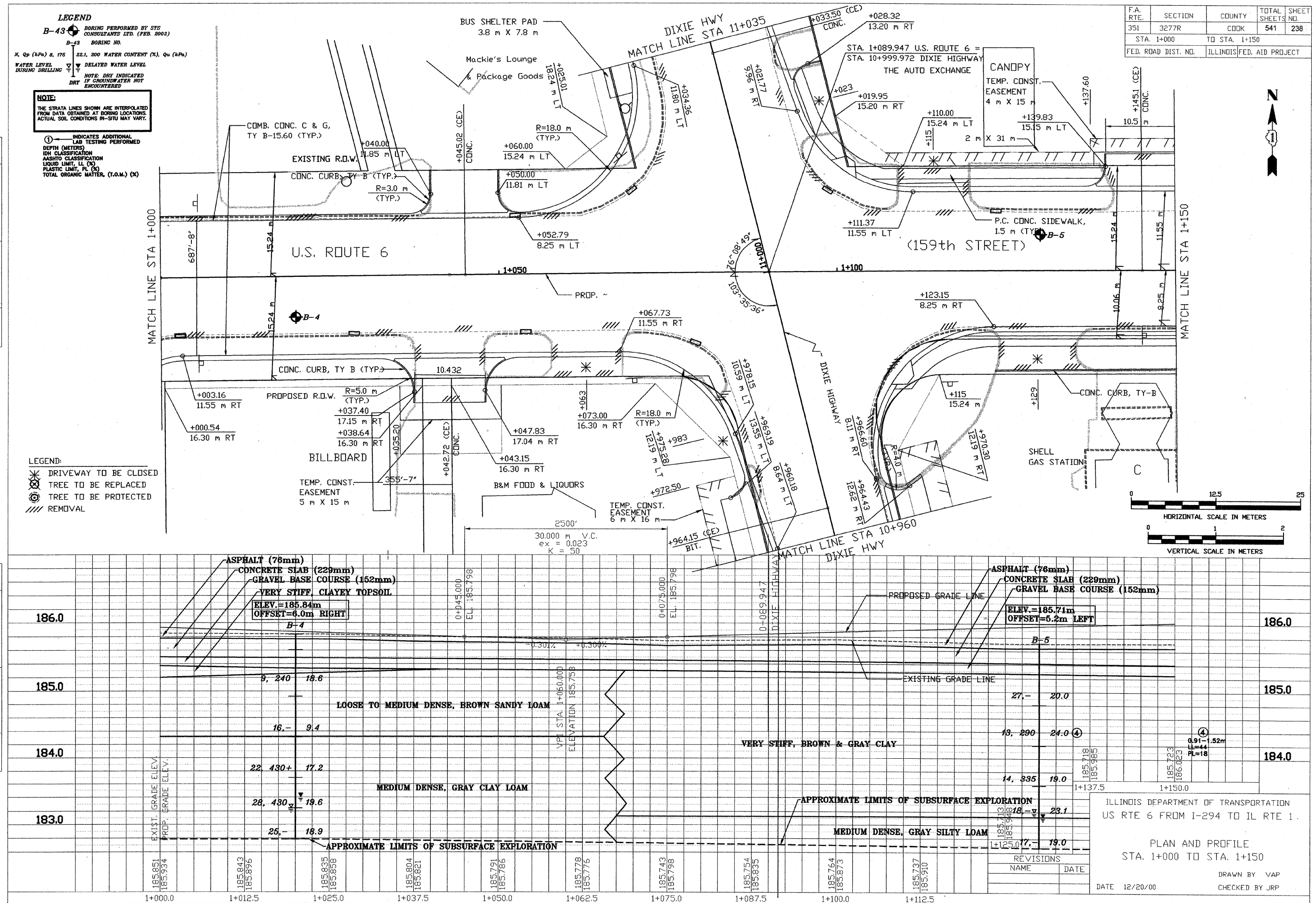
NOTE: DRY INDICATED IF GROUNDWATER NOT ENCOUNTERED

NOTE:
THE STRATA LINES SHOWN ARE INTERPOLATED FROM DATA OBTAINED AT BORING LOCATIONS. ACTUAL SOIL CONDITIONS IN-SITU MAY VARY.

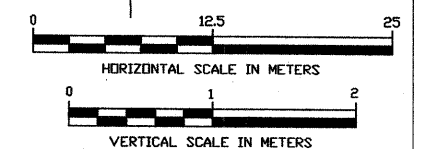
① INDICATES ADDITIONAL LAB TESTING PERFORMED
DEPTH (METERS)
IDH CLASSIFICATION
AASHTO CLASSIFICATION
LIQUID LIMIT, LL (%)
PLASTIC LIMIT, PL (%)
TOTAL ORGANIC MATTER, (T.O.M.) (%)

LEGEND:

- * DRIVEWAY TO BE CLOSED
- ⊗ TREE TO BE REPLACED
- ⊙ TREE TO BE PROTECTED
- /// REMOVAL



F.A. RTE.	SECTION	COUNTY	TOTAL SHEETS NO.	SHEET NO.
351	3277R	COOK	541	238
STA. 1+000		TO STA. 1+150		
FED. ROAD DIST. NO.		ILLINOIS FED. AID PROJECT		



ILLINOIS DEPARTMENT OF TRANSPORTATION
US RTE 6 FROM I-294 TO IL RTE 1

PLAN AND PROFILE
STA. 1+000 TO STA. 1+150

REVISIONS
NAME DATE

DATE 12/20/00
DRAWN BY VAP
CHECKED BY JRP

X:\PROJECTS\32646\PROFILES\1+000-1+150.dwg
04/09/2002 22:03