



STS Consultants Ltd.  
Consulting Engineers  
STS PROJECT NO.: 32646

|             |     |         |
|-------------|-----|---------|
| DRAWN BY    | CJD | 4-10-02 |
| CHECKED BY  | SEK | 4-10-02 |
| APPROVED BY | TDB | 4-10-02 |

|                    |      |
|--------------------|------|
| BY                 | DATE |
| FINAL SURVEYED     |      |
| SURVEY PLOTTED     |      |
| NOTE BOOK TEMPLATE |      |
| AREAS CHECKED      |      |
| NO.                |      |

|                    |      |
|--------------------|------|
| BY                 | DATE |
| ORIGINAL SURVEYED  |      |
| SURVEY PLOTTED     |      |
| NOTE BOOK TEMPLATE |      |
| AREAS CHECKED      |      |
| NO.                |      |

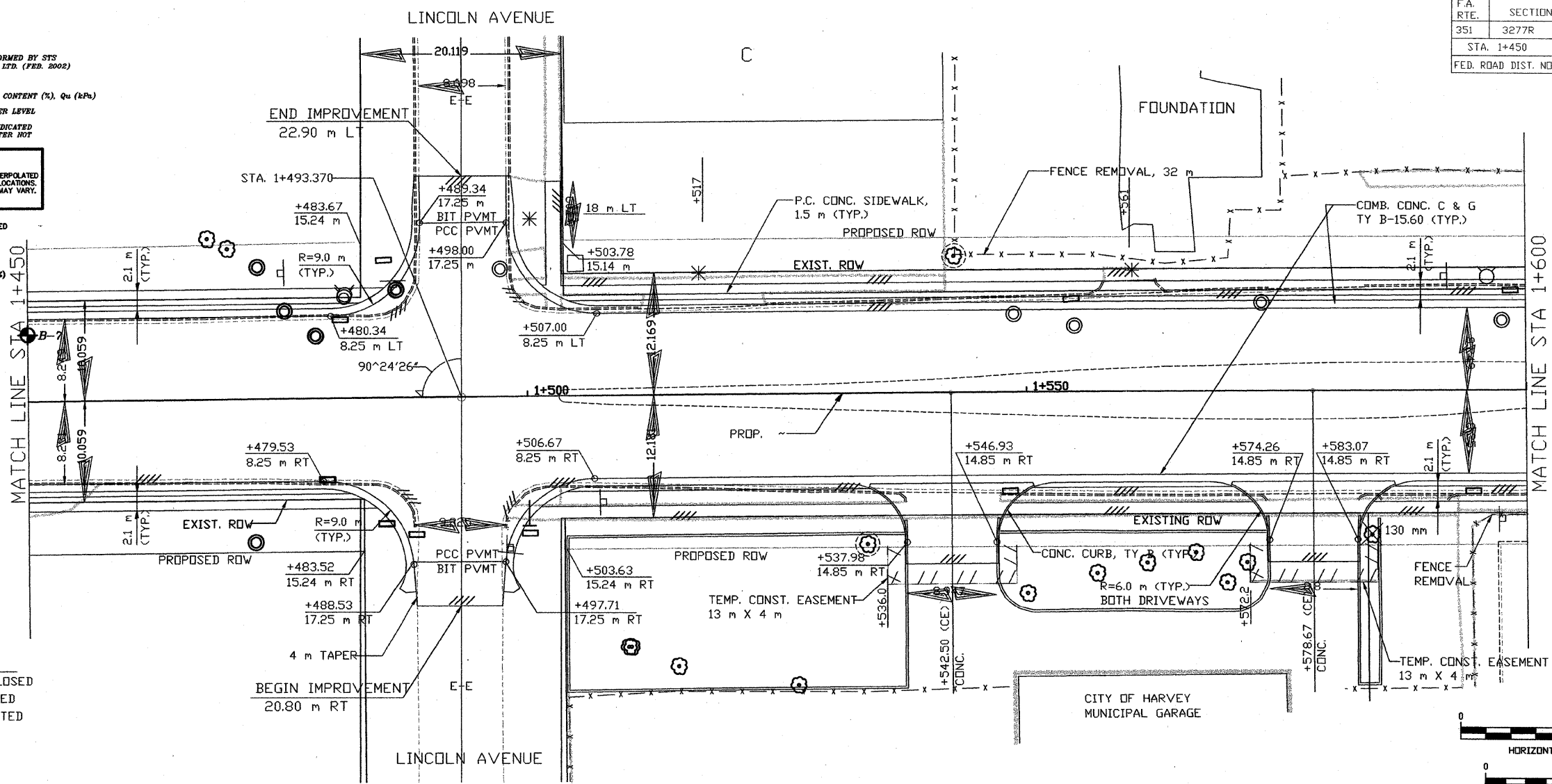
X:\PROJECTS\32646\PROFILES\1+450\_1+600.dwg  
04/09/2002 22:07

**LEGEND**  
B-43 BORING PERFORMED BY STS CONSULTANTS LTD. (FEB. 2002)  
B-43 BORING NO.  
N, Qp (kPa) @ 175 22.1, 200 WATER CONTENT (%), Qu (kPa)  
WATER LEVEL DURING DRILLING  
NOTE: DRY INDICATED IF GROUNDWATER NOT ENCOUNTERED

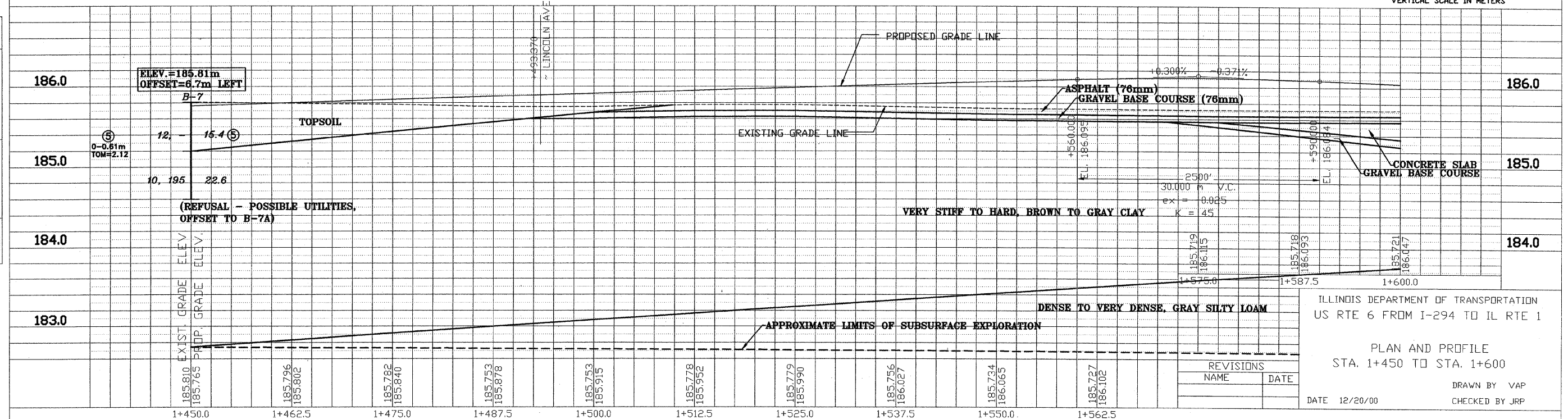
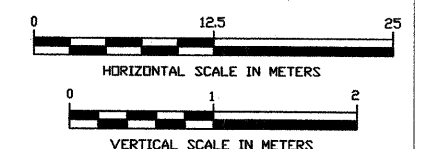
**NOTE:**  
THE STRATA LINES SHOWN ARE INTERPOLATED FROM DATA OBTAINED AT BORING LOCATIONS. ACTUAL SOIL CONDITIONS IN-SITU MAY VARY.

① INDICATES ADDITIONAL LAB TESTING PERFORMED  
DEPTH (METERS)  
IDH CLASSIFICATION  
AASHTO CLASSIFICATION  
LIQUID LIMIT, LL (%)  
PLASTIC LIMIT, PL (%)  
TOTAL ORGANIC MATTER, (T.O.M.) (%)

**LEGEND:**  
\* DRIVEWAY TO BE CLOSED  
\* TREE TO BE REPLACED  
\* TREE TO BE PROTECTED  
/// REMOVAL



|                     |         |                           |                  |                  |
|---------------------|---------|---------------------------|------------------|------------------|
| F.A. RTE.           | SECTION | COUNTY                    | TOTAL SHEETS NO. | SHEET SHEETS NO. |
| 351                 | 3277R   | COOK                      | 541              | 241              |
| STA. 1+450          |         | TO STA. 1+600             |                  |                  |
| FED. ROAD DIST. NO. |         | ILLINOIS FED. AID PROJECT |                  |                  |



ILLINOIS DEPARTMENT OF TRANSPORTATION  
US RTE 6 FROM I-294 TO IL RTE 1  
PLAN AND PROFILE  
STA. 1+450 TO STA. 1+600  
DATE 12/20/00  
DRAWN BY VAP  
CHECKED BY JRP

| REVISIONS |      |
|-----------|------|
| NAME      | DATE |
|           |      |