



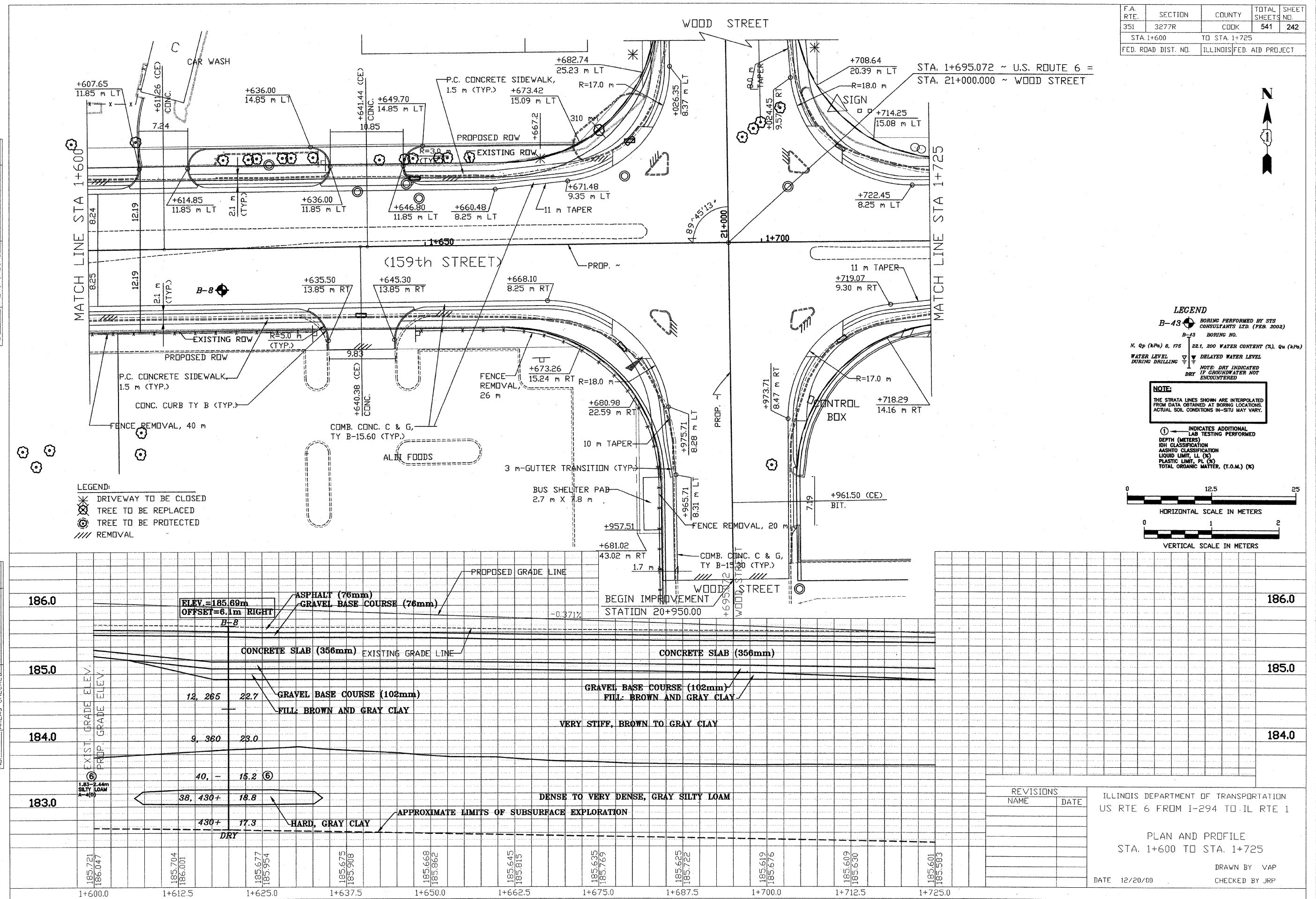
STS Consultants Ltd.
Consulting Engineers
STS PROJECT NO.: 32646

DRAWN BY	CJD	4-10-02
CHECKED BY	SEK	4-10-02
APPROVED BY	TDB	4-10-02

BY	DATE
FINAL SURVEY	
SURVEY PLOTTED	
NOTE BOOK TEMPLATE	
AREAS CHECKED	
NO.	

BY	DATE
ORIGINAL SURVEY	
SURVEY PLOTTED	
NOTE BOOK TEMPLATE	
AREAS CHECKED	
NO.	

1: VERTICAL SCALE 1:24 (PROFILES)
1:480 (PLAN)
DATE: 12/20/00

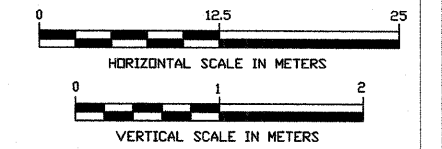


F.A. RTE.	SECTION	COUNTY	TOTAL SHEETS	SHEET NO.
351	3277R	COOK	541	242
STA. 1+600		TO STA. 1+725		
FED. ROAD DIST. NO.		ILLINOIS FED. AID PROJECT		

LEGEND
 B-43 BORING PERFORMED BY STS CONSULTANTS LTD. (FEB. 2002)
 B-43 BORING NO.
 N. Qp (kPa) 8, 175 22.1, 200 WATER CONTENT (%), Qu (kPa)
 WATER LEVEL DURING DRILLING
 DELAYED WATER LEVEL
 NOTE: DRY INDICATED IF GROUNDWATER NOT ENCOUNTERED

NOTE:
 THE STRATA LINES SHOWN ARE INTERPOLATED FROM DATA OBTAINED AT BORING LOCATIONS. ACTUAL SOIL CONDITIONS IN-SITU MAY VARY.

① INDICATES ADDITIONAL LAB TESTING PERFORMED
 DEPTH (METERS)
 ICH CLASSIFICATION
 AASHTO CLASSIFICATION
 LIQUID LIMIT, LL (%)
 PLASTIC LIMIT, PL (%)
 TOTAL ORGANIC MATTER, (T.O.M.) (%)



REVISIONS	
NAME	DATE

ILLINOIS DEPARTMENT OF TRANSPORTATION
 US RTE 6 FROM I-294 TO IL RTE 1
 PLAN AND PROFILE
 STA. 1+600 TO STA. 1+725
 DATE 12/20/00
 DRAWN BY VAP
 CHECKED BY JRP