

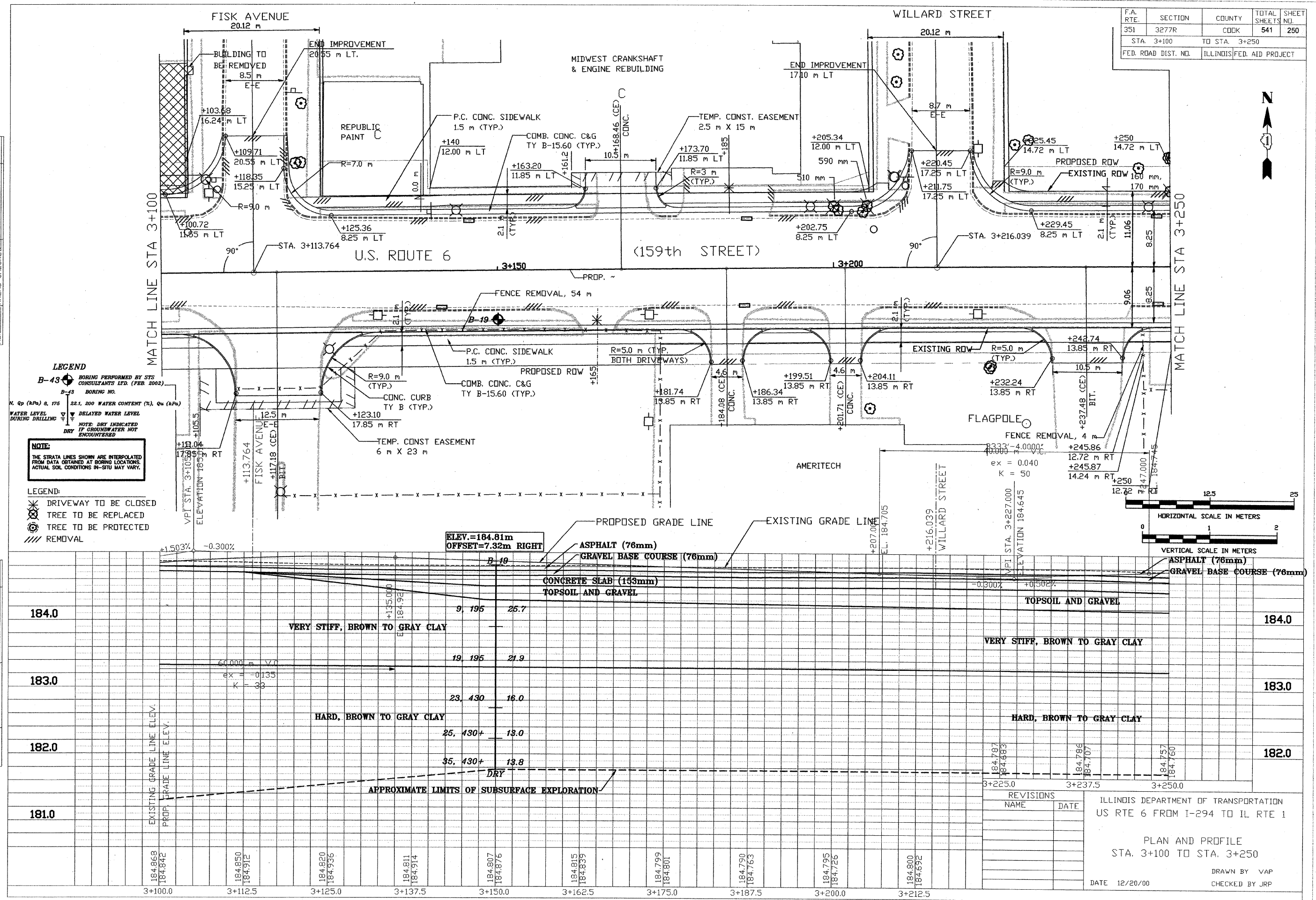


STS Consultants Ltd.
Consulting Engineers
STS PROJECT NO.: 32646

DRAWN BY: CJD 4-10-02
CHECKED BY: SEK 4-10-02
APPROVED BY: TDB 4-10-02

BY	DATE
FINAL SURVEY	
SURVEY PLOTTED	
NOTE BOOK TEMPLATE	
AREAS CHECKED	
NO.	

BY	DATE
ORIGINAL SURVEY	
SURVEY PLOTTED	
NOTE BOOK TEMPLATE	
AREAS CHECKED	
NO.	



LEGEND
 B-43 BORING PERFORMED BY STS CONSULTANTS LTD. (FEB. 2002)
 B-43 BORING NO.
 N, Qp (kPa) & 176
 22.1, 200 WATER CONTENT (%), Qu (kPa)
 WATER LEVEL DURING DRILLING
 DELAYED WATER LEVEL
 NOTE: DRY INDICATED IF GROUNDWATER NOT ENCOUNTERED

NOTE:
 THE STRATA LINES SHOWN ARE INTERPOLATED FROM DATA OBTAINED AT BORING LOCATIONS. ACTUAL SOIL CONDITIONS IN-SITU MAY VARY.

LEGEND:
 ✖ DRIVEWAY TO BE CLOSED
 ✖ TREE TO BE REPLACED
 ⊙ TREE TO BE PROTECTED
 // REMOVAL

STATION	EXISTING GRADE LINE ELEV.	PROP. GRADE LINE ELEV.	SOIL DESCRIPTION	DEPTH (m)	REMARKS
3+100.0	184.868	184.842	VERY STIFF, BROWN TO GRAY CLAY	9.195	25.7
3+112.5	184.850	184.912	VERY STIFF, BROWN TO GRAY CLAY	19.195	21.9
3+125.0	184.820	184.936	HARD, BROWN TO GRAY CLAY	23.430	16.0
3+137.5	184.811	184.914	HARD, BROWN TO GRAY CLAY	25.430+	13.0
3+150.0	184.807	184.876	DRY	35.430+	13.8
3+162.5	184.815	184.839			
3+175.0	184.799	184.801			
3+187.5	184.790	184.763			
3+200.0	184.795	184.726			
3+212.5	184.800	184.692			
3+225.0	184.787	184.683			
3+237.5	184.786	184.707			
3+250.0	184.757	184.760			

REVISIONS	NAME	DATE

ILLINOIS DEPARTMENT OF TRANSPORTATION
 US RTE 6 FROM I-294 TO IL RTE 1
 PLAN AND PROFILE
 STA. 3+100 TO STA. 3+250
 DATE 12/20/00
 DRAWN BY VAP
 CHECKED BY JRP

3+100-3+250 VERTICAL PROFILES
 04/09/2002 22:29