



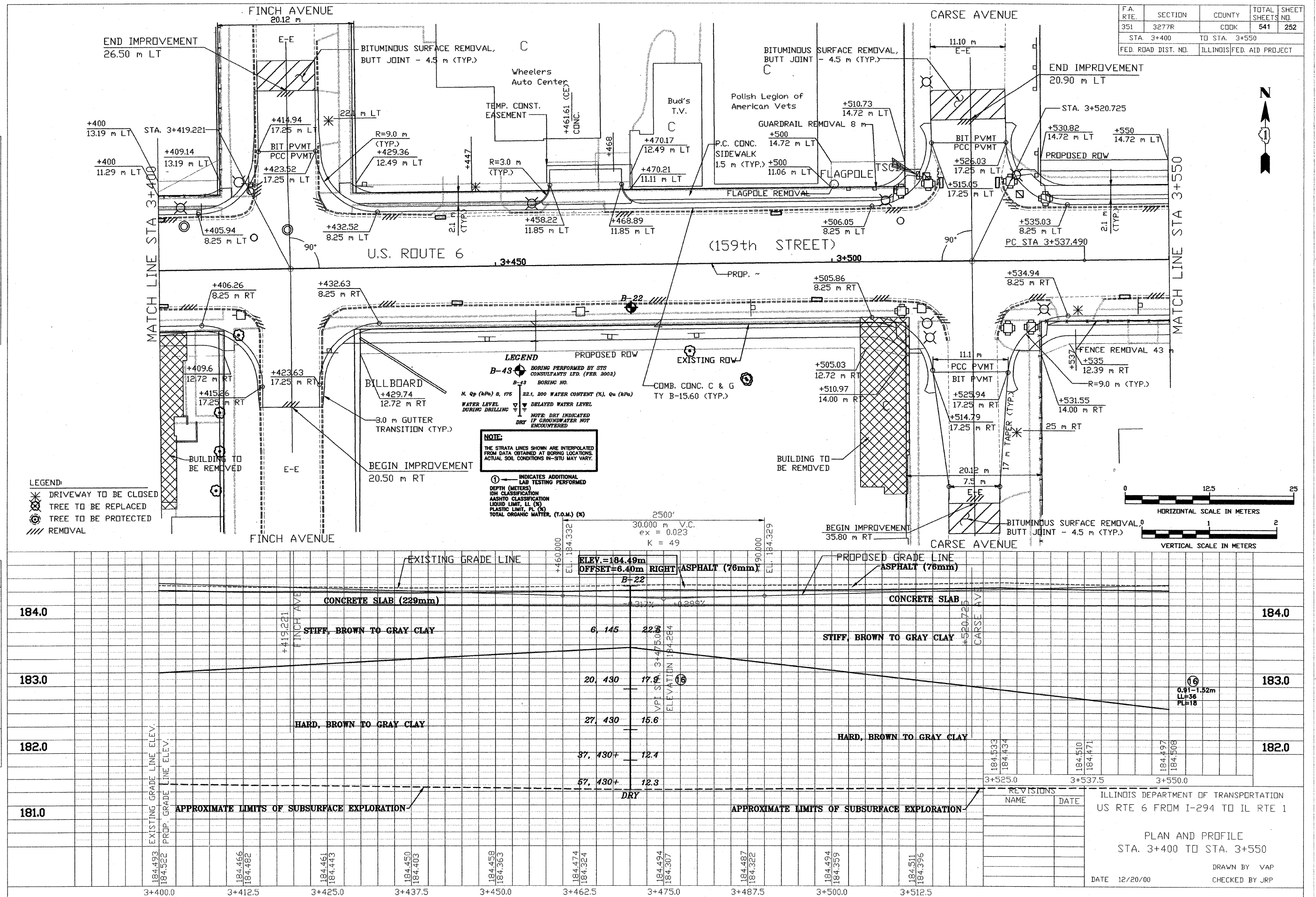
STS Consultants Ltd.  
Consulting Engineers  
STS PROJECT NO.: 32646

DRAWN BY	CJD	4-10-02
CHECKED BY	SEK	4-10-02
APPROVED BY	TDB	4-10-02

BY	DATE
FINAL SURVEY	
SURVEY	
NOTE BOOK	
PLATE	
AREAS	
CHECKED	
NO.	

BY	DATE
ORIGINAL SURVEY	
SURVEY	
NOTE BOOK	
PLATE	
AREAS	
CHECKED	
NO.	

3: V:\000\32646\PROFILES\04/09/2002 22:36



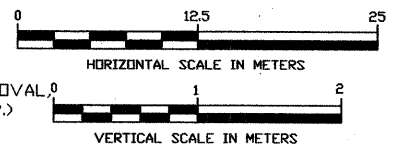
F.A. RTE.	SECTION	COUNTY	TOTAL SHEETS NO.	SHEET NO.
351	3277R	COOK	541	252
STA. 3+400		TO STA. 3+550		
FED. ROAD DIST. NO.		ILLINOIS FED. AID PROJECT		

**LEGEND**  
 B-43 BORING PERFORMED BY STS CONSULTANTS LTD. (FEB. 2002)  
 B-43 BORING NO.  
 N, Qp (kPa) 8, 176 22.1, 200 WATER CONTENT (%), Qu (kPa)  
 WATER LEVEL DURING DRILLING  
 DELAYED WATER LEVEL  
 NOTE: DRY INDICATED IF GROUNDWATER NOT ENCOUNTERED  
 DRY

**NOTE:**  
 THE STRATA LINES SHOWN ARE INTERPOLATED FROM DATA OBTAINED AT BORING LOCATIONS. ACTUAL SOIL CONDITIONS IN-SITU MAY VARY.

① INDICATES ADDITIONAL LAB TESTING PERFORMED  
 DEPTH (METERS)  
 IDH CLASSIFICATION  
 AASHTO CLASSIFICATION  
 LIQUID LIMIT, LL (%)  
 PLASTIC LIMIT, PL (%)  
 TOTAL ORGANIC MATTER, (T.O.M.) (%)

**LEGEND:**  
 ✖ DRIVEWAY TO BE CLOSED  
 ○ TREE TO BE REPLACED  
 ⊗ TREE TO BE PROTECTED  
 // REMOVAL



STATION	EXISTING GRADE LINE	PROPOSED GRADE LINE	SOIL CONDITIONS	REVISIONS
184.0	CONCRETE SLAB (229mm)	CONCRETE SLAB	STIFF, BROWN TO GRAY CLAY	
183.0			HARD, BROWN TO GRAY CLAY	
182.0				
181.0	APPROXIMATE LIMITS OF SUBSURFACE EXPLORATION	APPROXIMATE LIMITS OF SUBSURFACE EXPLORATION	DRY	

ILLINOIS DEPARTMENT OF TRANSPORTATION  
 US RTE 6 FROM I-294 TO IL RTE 1  
 PLAN AND PROFILE  
 STA. 3+400 TO STA. 3+550  
 DATE 12/20/00  
 DRAWN BY VAP  
 CHECKED BY JRP