



STS Consultants Ltd.
Consulting Engineers

STS PROJECT NO.: 32646

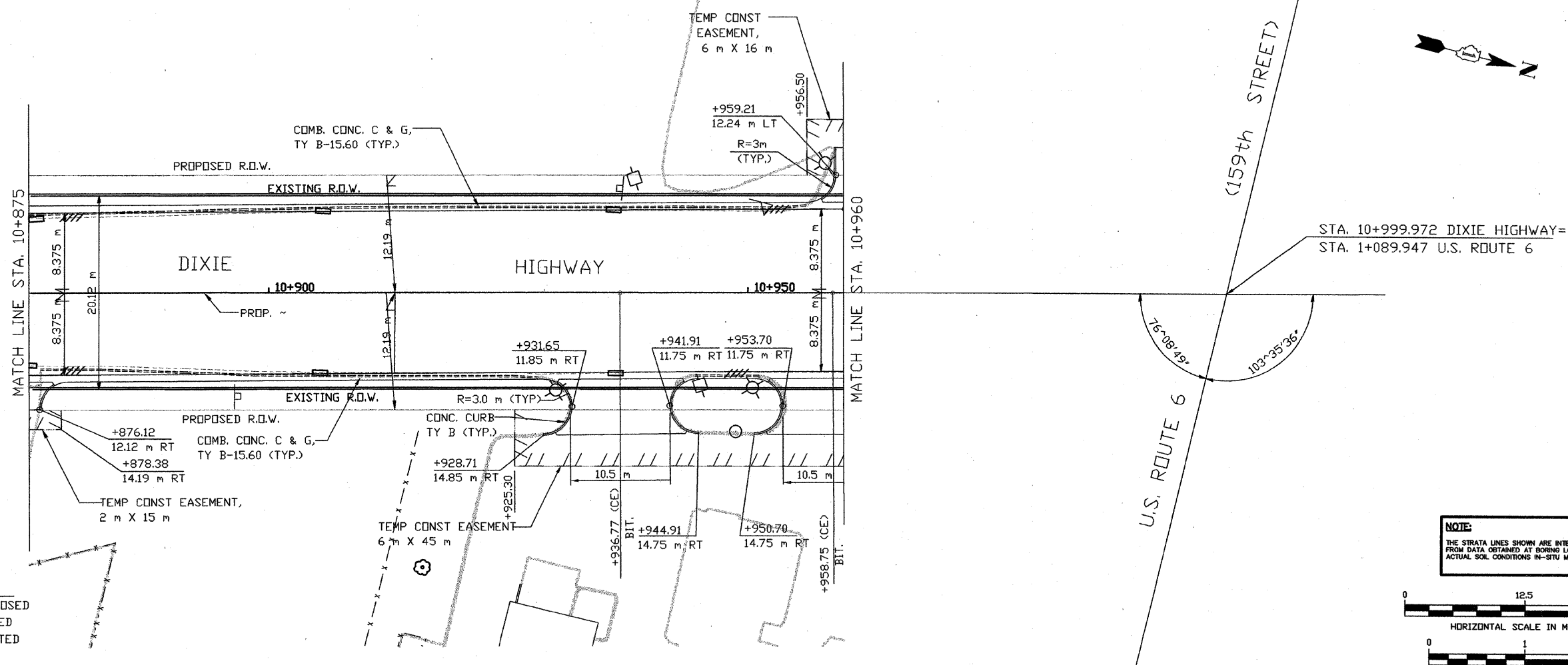
DRAWN BY	CJD	4-10-02
CHECKED BY	SEK	4-10-02
APPROVED BY	TDB	4-10-02

DATE	
BY	
SURVEYED	
PLOTTED	
TEMPLATE	
NOTE BOOK	
AREAS CHECKED	
NO.	

DATE	
BY	
ORIGINAL SURVEY	
PLOTTED	
NOTE BOOK	
AREAS CHECKED	
NO.	

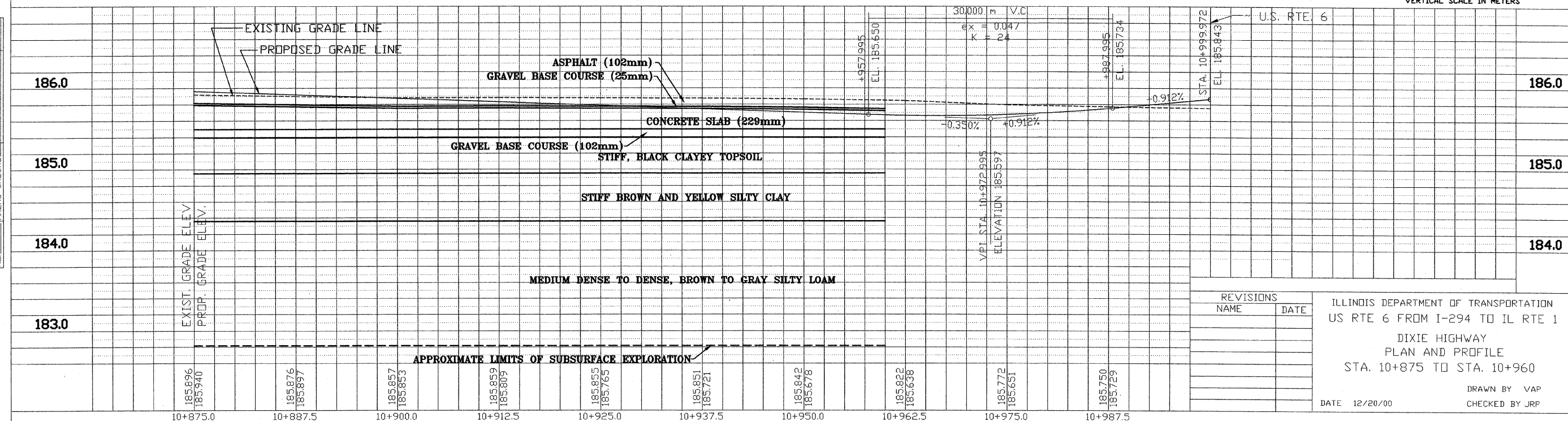
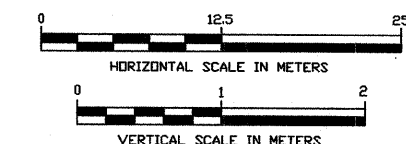
X:\PROJECTS\32646 (PROFILES)
10+875-10+960.dwg
04/07/2002 22:45

F.A. RTE.	SECTION	COUNTY	TOTAL SHEETS	SHEET NO.
351	3277R	COOK	541	257
STA. 10+875		TO STA. 10+960		
FED. ROAD DIST. NO.		ILLINOIS FED. AID PROJECT		



- LEGEND:
- DRIVEWAY TO BE CLOSED
 - TREE TO BE REPLACED
 - TREE TO BE PROTECTED
 - REMOVAL

NOTE:
THE STRATA LINES SHOWN ARE INTERPOLATED FROM DATA OBTAINED AT BORING LOCATIONS. ACTUAL SOIL CONDITIONS IN-SITU MAY VARY.



REVISIONS	
NAME	DATE

ILLINOIS DEPARTMENT OF TRANSPORTATION
US RTE 6 FROM I-294 TO IL RTE 1
DIXIE HIGHWAY
PLAN AND PROFILE
STA. 10+875 TO STA. 10+960

DATE 12/20/00
DRAWN BY VAP
CHECKED BY JRP