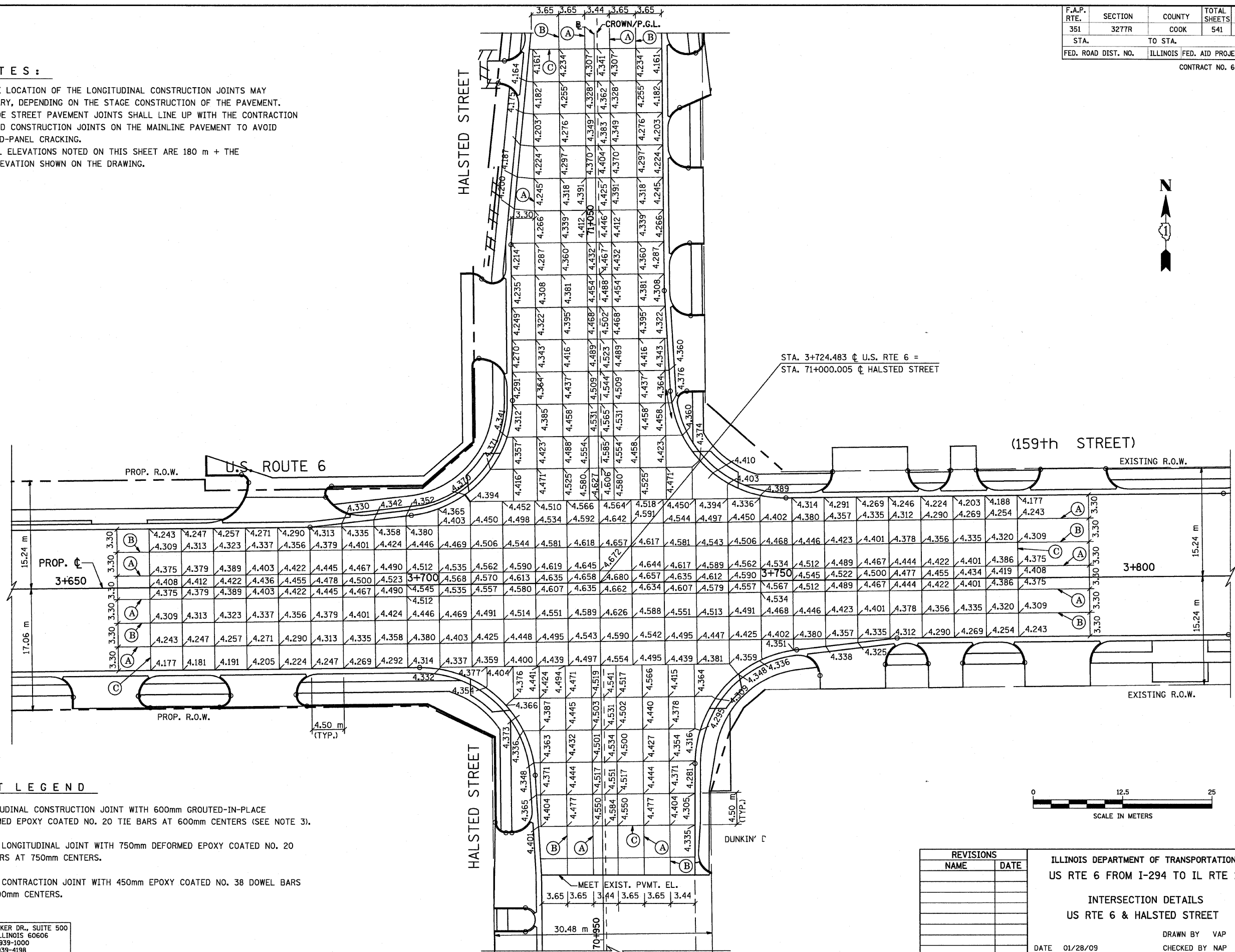


F.A.P. RTE.	SECTION	COUNTY	TOTAL SHEETS	SHEET NO.
351	3277R	COOK	541	275
STA.		TO STA.		
FED. ROAD DIST. NO.		ILLINOIS FED. AID PROJECT		
CONTRACT NO. 60774				

**NOTES:**

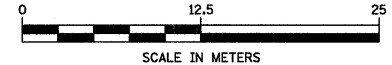
1. THE LOCATION OF THE LONGITUDINAL CONSTRUCTION JOINTS MAY VARY, DEPENDING ON THE STAGE CONSTRUCTION OF THE PAVEMENT.
2. SIDE STREET PAVEMENT JOINTS SHALL LINE UP WITH THE CONTRACTION AND CONSTRUCTION JOINTS ON THE MAINLINE PAVEMENT TO AVOID MID-PANEL CRACKING.
3. ALL ELEVATIONS NOTED ON THIS SHEET ARE 180 m + THE ELEVATION SHOWN ON THE DRAWING.



STA. 3+724.483 @ U.S. RTE 6 =  
STA. 71+000.005 @ HALSTED STREET

**JOINT LEGEND**

- (A) LONGITUDINAL CONSTRUCTION JOINT WITH 600mm GROUTED-IN-PLACE DEFORMED EPOXY COATED NO. 20 TIE BARS AT 600mm CENTERS (SEE NOTE 3).
- (B) SAWED LONGITUDINAL JOINT WITH 750mm DEFORMED EPOXY COATED NO. 20 TIE BARS AT 750mm CENTERS.
- (C) SAWED CONTRACTION JOINT WITH 450mm EPOXY COATED NO. 38 DOWEL BARS AT 300mm CENTERS.



REVISIONS	
NAME	DATE

ILLINOIS DEPARTMENT OF TRANSPORTATION  
US RTE 6 FROM I-294 TO IL RTE 1  
  
INTERSECTION DETAILS  
US RTE 6 & HALSTED STREET

DATE 01/28/09  
DRAWN BY VAP  
CHECKED BY NAP