

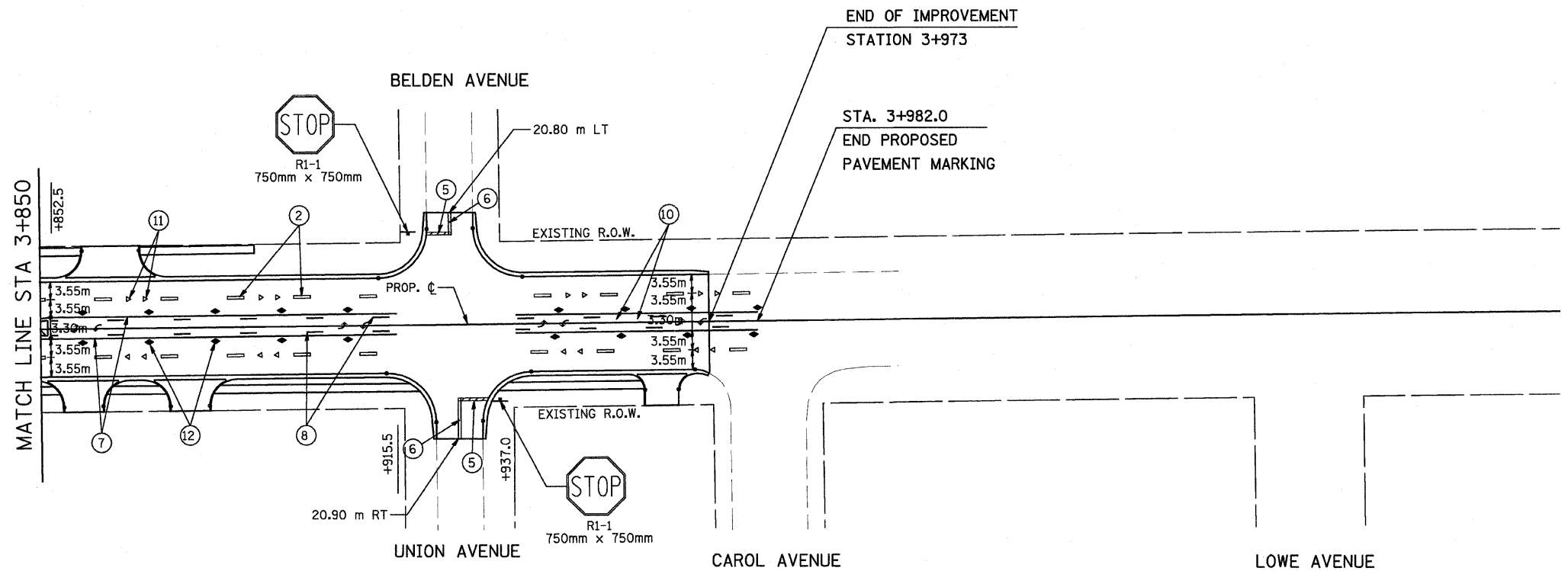
F.A.P. RTE.	SECTION	COUNTY	TOTAL SHEETS	SHEET NO.
351	3277R	COOK	541	282
STA. 3+850		TO STA. 3+982		
FED. ROAD DIST. NO.		ILLINOIS FED. AID PROJECT		

CONTRACT NO. 60774



LEGEND FOR PAVEMENT MARKING

- ① POLYUREA PAVEMENT MARKING
TYPE I - LINE 100mm (WHITE)
- ② POLYUREA PAVEMENT MARKING
TYPE I - LINE 100mm
(WHITE, 3m-DASH, 9m-SKIP)
- ③ POLYUREA PAVEMENT MARKING
TYPE I - LINE 150mm (WHITE)
- ④ POLYUREA PAVEMENT MARKING
TYPE I - LINE 300mm (WHITE)
- ⑤ POLYUREA PAVEMENT MARKING
TYPE I - LINE 600mm (WHITE)
- ⑥ POLYUREA PAVEMENT MARKING
TYPE I - LINE 100mm (YELLOW, 2-100mm
@ 280 mm C/C)
- ⑦ POLYUREA PAVEMENT MARKING
TYPE I - LINE 100mm (YELLOW SOLID)
- ⑧ POLYUREA PAVEMENT MARKING
TYPE I - LINE 100 mm
(YELLOW, 3 m -DASH, 9 m-SKIP)
- ⑨ POLYUREA PAVEMENT MARKING
TYPE I - LINE 300 mm (YELLOW)
- ⑩ POLYUREA PAVEMENT MARKING
LETTERS AND SYMBOLS (WHITE)
- ⑪ RAISED REFLECTIVE PAVEMENT MARKERS
ONE WAY CRYSTAL MARKER
- ⑫ RAISED REFLECTIVE PAVEMENT MARKERS
TWO WAY AMBER MARKER
- ⑬ POLYUREA PAVEMENT MARKING
TYPE A - LINE 150 mm
(WHITE, 0.6m-DASH, 1.8 m-SKIP)
- ⑭ RAISED REFLECTIVE PAVEMENT MARKERS
ONE WAY AMBER MARKER



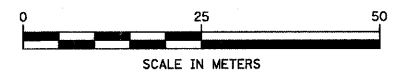
END OF IMPROVEMENT
STATION 3+973

STA. 3+982.0
END PROPOSED
PAVEMENT MARKING

NOTE: ALL SIGNS TO BE MOUNTED ON TELESCOPING
STEEL SUPPORTS

FOR NOTES SEE DRAWING LS-01

U.S. ROUTE 6



REVISIONS	
NAME	DATE

ILLINOIS DEPARTMENT OF TRANSPORTATION
US RTE 6 FROM I-294 TO IL RTE 1
PAVEMENT MARKING AND SIGNING PLAN
STA. 3+850 TO STA. 3+982
LS-07
DATE 01/28/09
DRAWN BY TWR
CHECKED BY NAP

URS 100 S. WACKER DR., SUITE 500
CHICAGO, ILLINOIS 60606
TEL. (312) 939-1000
FAX (312) 939-4198