

EROSION CONTROL AND LANDSCAPING NOTES

ALL SEDIMENT AND EROSION CONTROL MEASURES SHALL BE INSTALLED PER IDOT STANDARD 280001 OR AS SPECIFIED HEREIN AND PAID FOR IN ACCORDANCE WITH SECTION 280 OF THE STANDARD SPECIFICATIONS. ALL CONSTRUCTION ACTIVITIES WILL BE IN ACCORDANCE WITH THE NATIONAL POLLUTION DISCHARGE ELIMINATION SYSTEM STORM WATER PERMIT ILR10.

EROSION CONTROL SHALL BE PROVIDED IN ACCORDANCE WITH THE SEQUENCE OF STAGE CONSTRUCTION. THE CONTRACTOR SHALL SUBMIT A DETAILED SCHEDULE FOR APPROVAL.

SEDIMENTATION AND EROSION CONTROL DEVICES SHALL BE IN PLACE AND FUNCTIONAL BEFORE THE PROJECT SITE IS OTHERWISE DISTURBED.

ALL DISTURBED AREAS SHALL BE SEEDED OR SODDED AS SOON AS PRACTICAL AFTER CONSTRUCTION ACTIVITIES IN THAT AREA HAVE CONCLUDED. AREAS THAT HAVE BEEN STRIPPED AND WILL NOT RECEIVE PERMANENT LANDSCAPING BEFORE THE END OF THE FALL SEEDING RESTRICTIONS SHALL RECEIVE "TEMPORARY EROSION CONTROL SEEDING".

THE CONTRACTOR SHALL TAKE ALL PRECAUTIONS TO PROTECT WETLANDS FROM DAMAGE BY SEDIMENT, CONSTRUCTION EQUIPMENT OR BY HIS WORK CREWS. THE CONTRACTOR SHALL ASSURE THAT DEBRIS OR ANY CONSTRUCTION MATERIAL IS NOT DISPOSED OF IN WETLANDS.

WATER PUMPED OR OTHERWISE DISCHARGED FROM THE SITE DURING CONSTRUCTION DEWATERING SHALL BE FILTERED.

GRAVEL ROADS, ACCESS DRIVES, PARKING AREAS OF SUFFICIENT WIDTH AND LENGTH, AND VEHICLE WASH DOWN FACILITIES IF NECESSARY, SHALL BE PROVIDED TO PREVENT THE DEPOSIT OF SOIL FROM BEING TRACKED ONTO PUBLIC OR PRIVATE ROADWAYS. ANY SOIL REACHING A PUBLIC OR PRIVATE ROADWAY SHALL BE REMOVED BEFORE THE END OF EACH WORKDAY OR SOONER AS NEEDED.

EROSION CONTROL MEASURES WILL BE INSPECTED BY THE ENGINEER PERIODICALLY AND WITHIN 24 HOURS OF ANY STORM EXCEEDING 1/2-INCH PRECIPITATION. DAMAGED AND INEFFECTIVE EROSION CONTROL MEASURES SHALL BE REPAIRED OR REPLACED WITHIN 72 HOURS.

ALL CONTROL MEASURES SHALL BE KEPT OPERATIONAL AND MAINTAINED CONTINUOUSLY THROUGHOUT THE PERIOD OF LAND DISTURBANCE UNTIL PERMANENT SEDIMENT AND EROSION CONTROL MEASURES ARE OPERATIONAL.

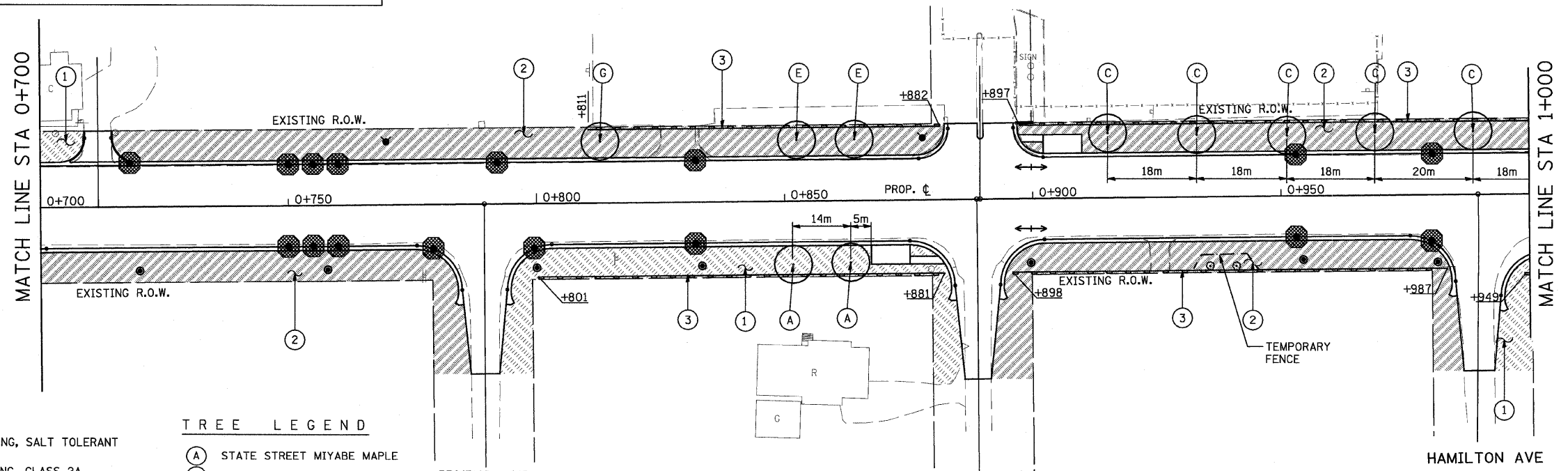
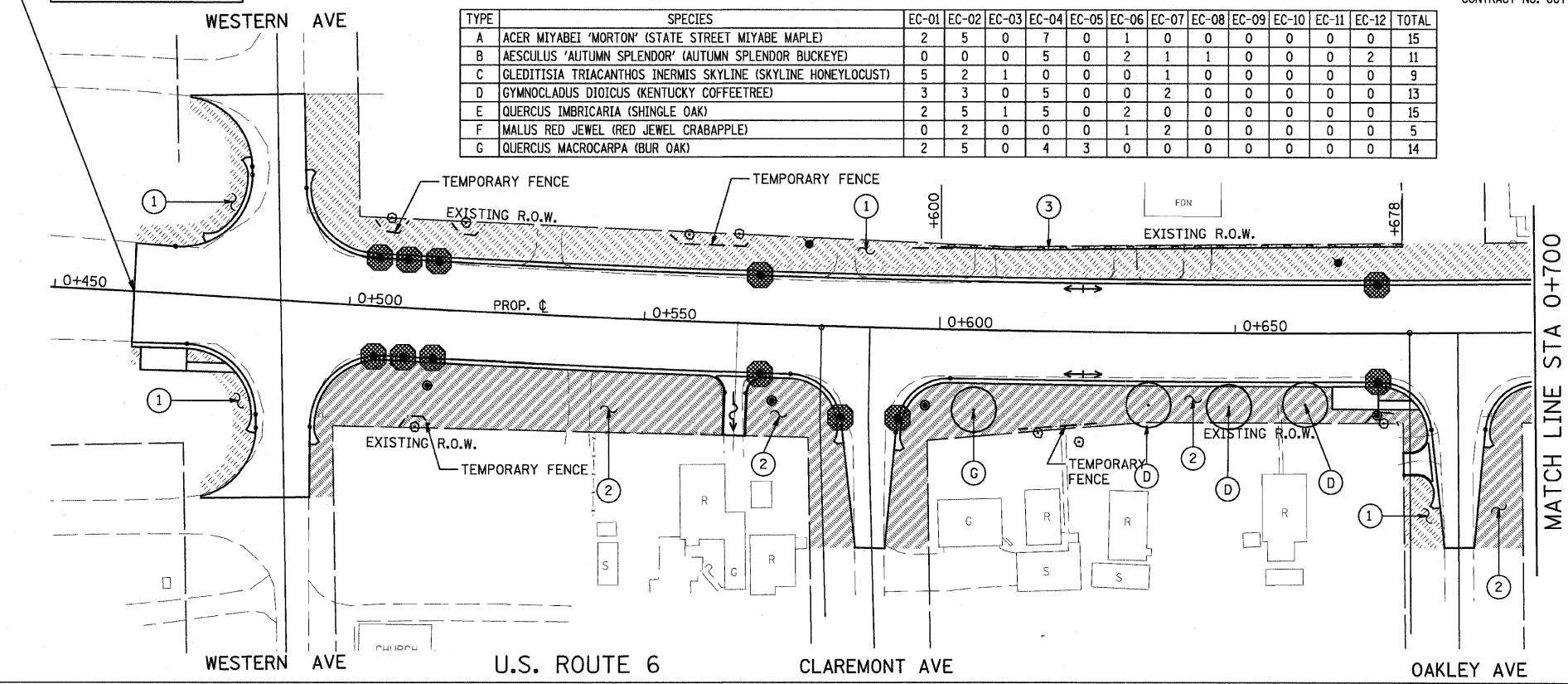
THE SEEDING DATES FOR BARE EARTH SEEDING OF MIXTURE CLASS 2A SHALL BE FROM APRIL 1 TO JUNE 1, AND FROM AUGUST 15 TO SEPTEMBER 30.

TREES SHALL BE INSTALLED ON THE BACKSLOPE, NOT IN THE SWALE.

BEGIN IMPROVEMENT
STATION 0+463.50

TREE SCHEDULE

TYPE	SPECIES	EC-01	EC-02	EC-03	EC-04	EC-05	EC-06	EC-07	EC-08	EC-09	EC-10	EC-11	EC-12	TOTAL
A	ACER MIYABEI 'MORTON' (STATE STREET MIYABE MAPLE)	2	5	0	7	0	1	0	0	0	0	0	0	15
B	AESCULUS 'AUTUMN SPLENDOR' (AUTUMN SPLENDOR BUCKEYE)	0	0	0	5	0	2	1	1	0	0	0	2	11
C	GLEDITSIA TRIACANTHOS INERMIS SKYLINE (SKYLINE HONEYLOCUST)	5	2	1	0	0	0	1	0	0	0	0	0	9
D	GYMNOCLADUS DIOICUS (KENTUCKY COFFEETREE)	3	3	0	5	0	0	2	0	0	0	0	0	13
E	QUERCUS IMBRICARIA (SHINGLE OAK)	2	5	1	5	0	2	0	0	0	0	0	0	15
F	MALUS RED JEWEL (RED JEWEL CRABAPPLE)	0	2	0	0	0	1	2	0	0	0	0	0	5
G	QUERCUS MACROCARPA (BUR OAK)	2	5	0	4	3	0	0	0	0	0	0	0	14



LEGEND

- ① [Hatched Box] SODDING, SALT TOLERANT
- ② [Dotted Box] SEEDING, CLASS 2A
- ③ [Dashed Line] PERIMETER EROSION BARRIER
- [Diamond with X] INLET & PIPE PROTECTION
- [Circle with Dot] INLET FILTER

TREE LEGEND

- (A) STATE STREET MIYABE MAPLE
- (B) AUTUMN SPLENDOR BUCKEYE
- (C) SKYLINE HONEYLOCUST
- (D) KENTUCKY COFFEETREE
- (E) SHINGLE OAK
- (F) RED JEWEL CRABAPPLE
- (G) BUR OAK

URS
100 S. WACKER DR., SUITE 500
CHICAGO, ILLINOIS 60606
TEL. (312) 939-1000
FAX (312) 939-4198

REVISIONS	
NAME	DATE

ILLINOIS DEPARTMENT OF TRANSPORTATION
US RTE 6 FROM I-294 TO IL RTE 1
EROSION CONTROL AND
LANDSCAPING PLAN
STA. 0+400 TO STA. 1+000
EC-01 DRAWN BY VAP
DATE 01/28/09 CHECKED BY NAP

