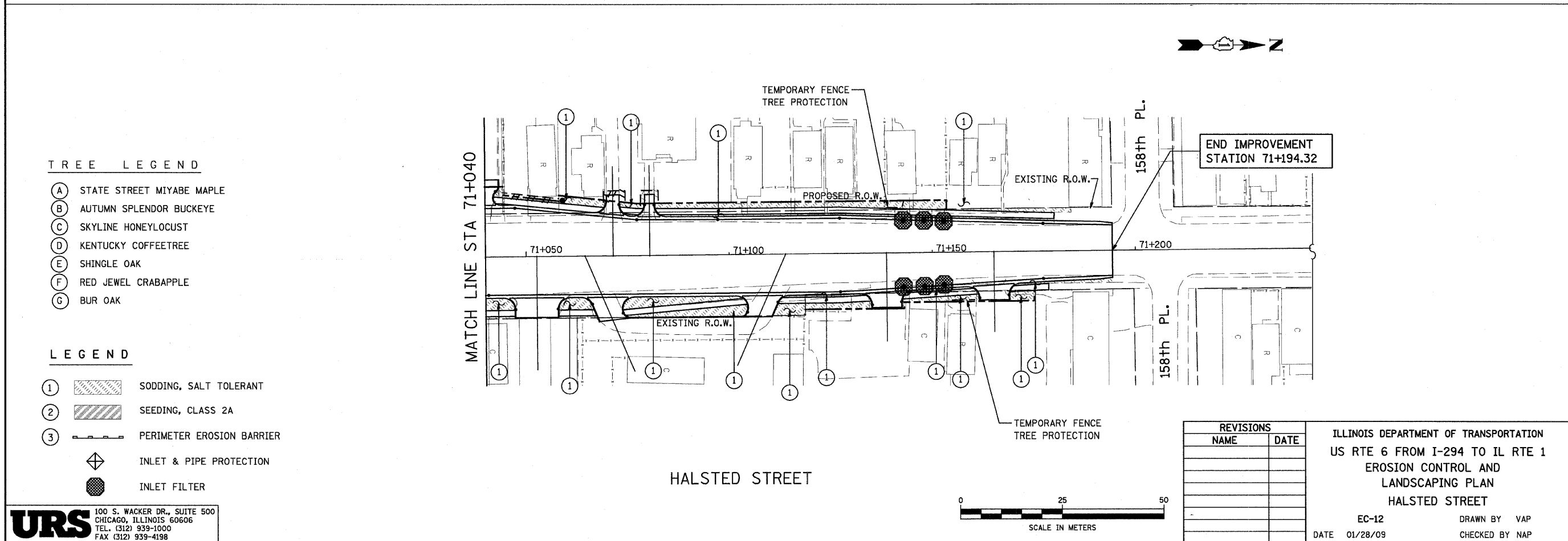
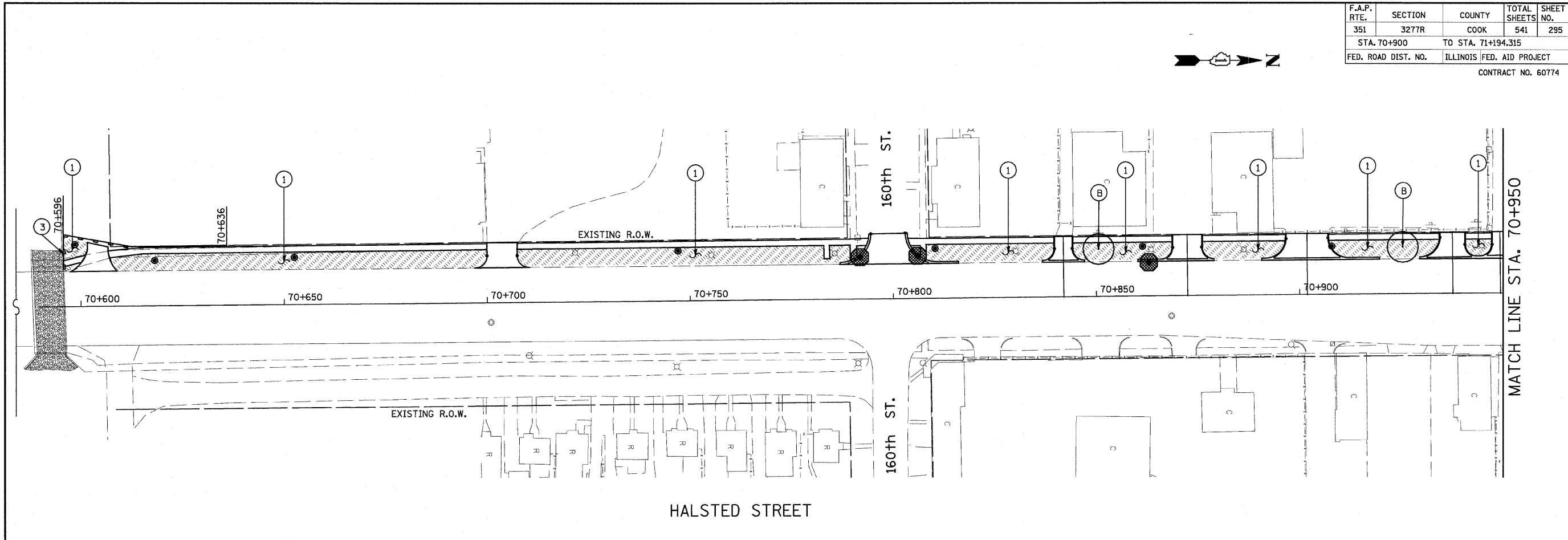


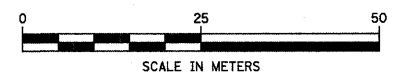
F.A.P. RTE.	SECTION	COUNTY	TOTAL SHEETS	SHEET NO.
351	3277R	COOK	541	295
STA. 70+900		TO STA. 71+194.315		
FED. ROAD DIST. NO.		ILLINOIS FED. AID PROJECT		
CONTRACT NO. 60774				



- TREE LEGEND**
- (A) STATE STREET MIYABE MAPLE
 - (B) AUTUMN SPLENDOR BUCKEYE
 - (C) SKYLINE HONEYLOCUST
 - (D) KENTUCKY COFFEETREE
 - (E) SHINGLE OAK
 - (F) RED JEWEL CRABAPPLE
 - (G) BUR OAK

- LEGEND**
- (1) [Hatched Box] SODDING, SALT TOLERANT
 - (2) [Diagonal Hatched Box] SEEDING, CLASS 2A
 - (3) [Dashed Line] PERIMETER EROSION BARRIER
 - [Diamond with X] INLET & PIPE PROTECTION
 - [Circle with Dot] INLET FILTER

URS 100 S. WACKER DR., SUITE 500
 CHICAGO, ILLINOIS 60606
 TEL. (312) 939-1000
 FAX (312) 939-4198



REVISIONS	
NAME	DATE

ILLINOIS DEPARTMENT OF TRANSPORTATION
 US RTE 6 FROM I-294 TO IL RTE 1
 EROSION CONTROL AND
 LANDSCAPING PLAN
 HALSTED STREET
 EC-12 DRAWN BY VAP
 DATE 01/28/09 CHECKED BY NAP