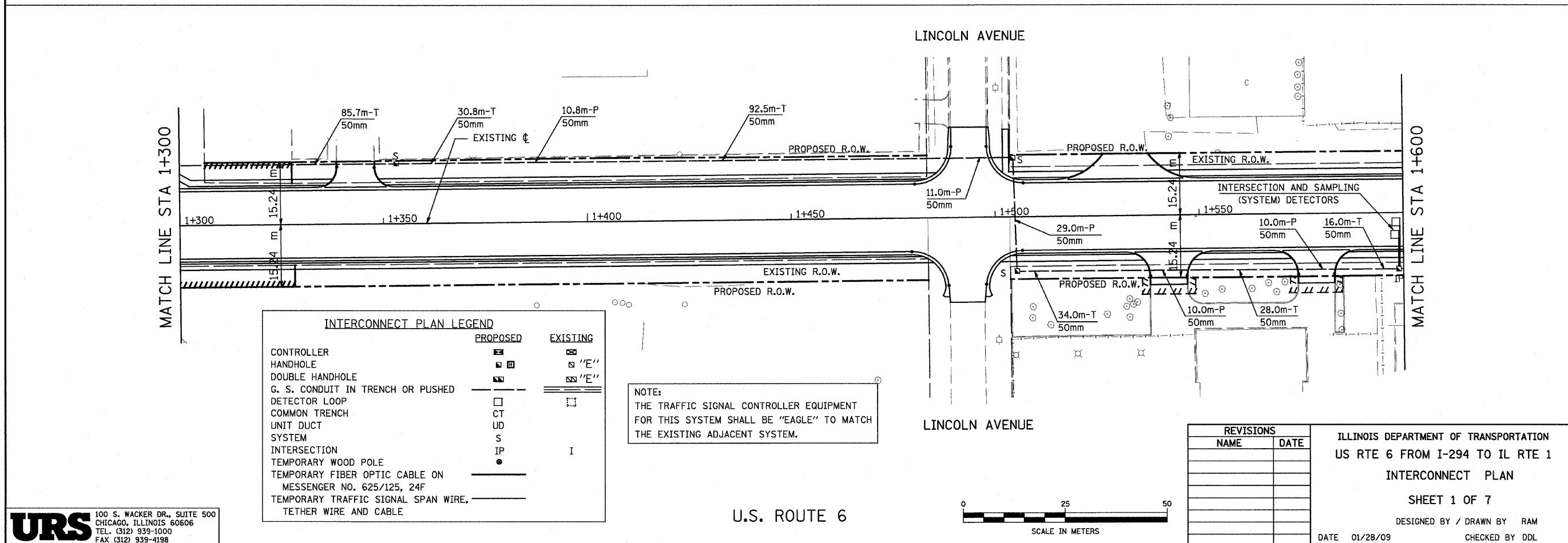
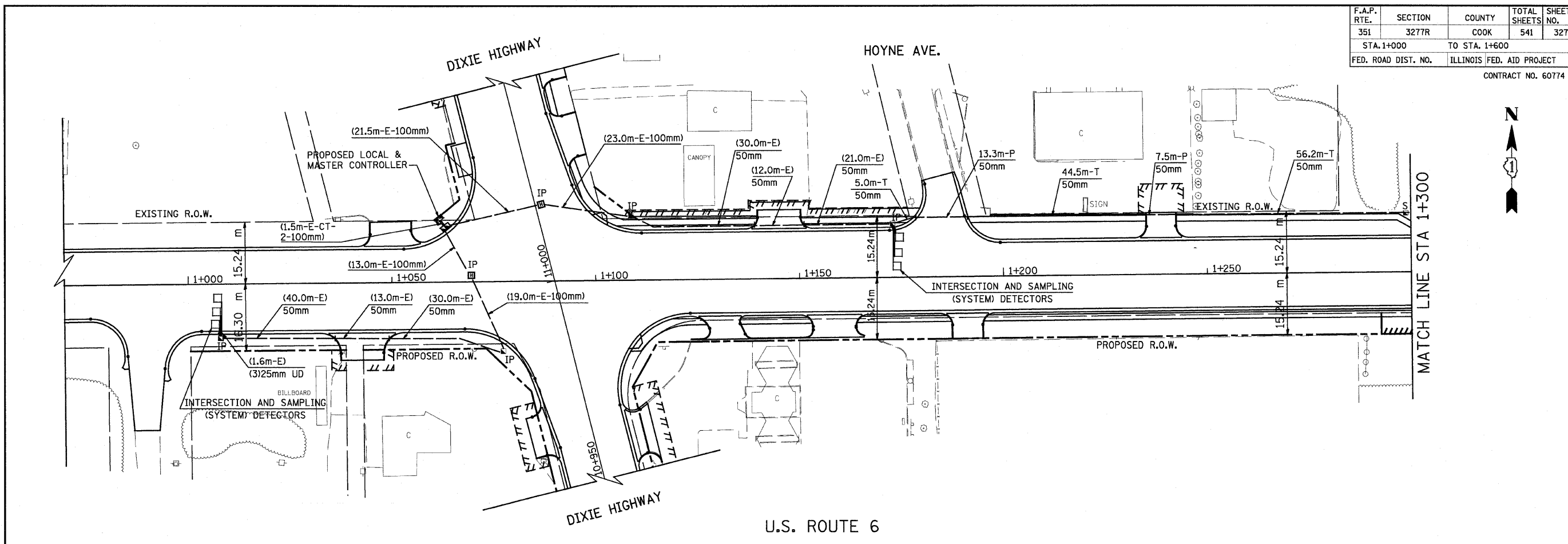
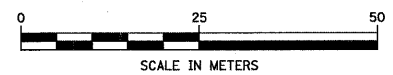


F.A.P. RTE.	SECTION	COUNTY	TOTAL SHEETS	SHEET NO.
351	3277R	COOK	541	327
STA. 1+000		TO STA. 1+600		
FED. ROAD DIST. NO.		ILLINOIS FED. AID PROJECT		
CONTRACT NO. 60774				



INTERCONNECT PLAN LEGEND		
	PROPOSED	EXISTING
CONTROLLER	[Symbol]	[Symbol]
HANDHOLE	[Symbol]	[Symbol]
DOUBLE HANDHOLE	[Symbol]	[Symbol]
G. S. CONDUIT IN TRENCH OR PUSHED	[Symbol]	[Symbol]
DETECTOR LOOP	[Symbol]	[Symbol]
COMMON TRENCH	[Symbol]	[Symbol]
UNIT DUCT	[Symbol]	[Symbol]
SYSTEM	[Symbol]	[Symbol]
INTERSECTION	[Symbol]	[Symbol]
TEMPORARY WOOD POLE	[Symbol]	[Symbol]
TEMPORARY FIBER OPTIC CABLE ON MESSENGER NO. 625/125, 24F	[Symbol]	[Symbol]
TEMPORARY TRAFFIC SIGNAL SPAN WIRE, TETHER WIRE AND CABLE	[Symbol]	[Symbol]

NOTE:
THE TRAFFIC SIGNAL CONTROLLER EQUIPMENT FOR THIS SYSTEM SHALL BE "EAGLE" TO MATCH THE EXISTING ADJACENT SYSTEM.



REVISIONS	
NAME	DATE

ILLINOIS DEPARTMENT OF TRANSPORTATION
US RTE 6 FROM I-294 TO IL RTE 1
INTERCONNECT PLAN
SHEET 1 OF 7
DESIGNED BY / DRAWN BY RAM
DATE 01/28/09 CHECKED BY DDL

URS 100 S. WACKER DR., SUITE 500
CHICAGO, ILLINOIS 60606
TEL. (312) 939-1000
FAX (312) 939-4198