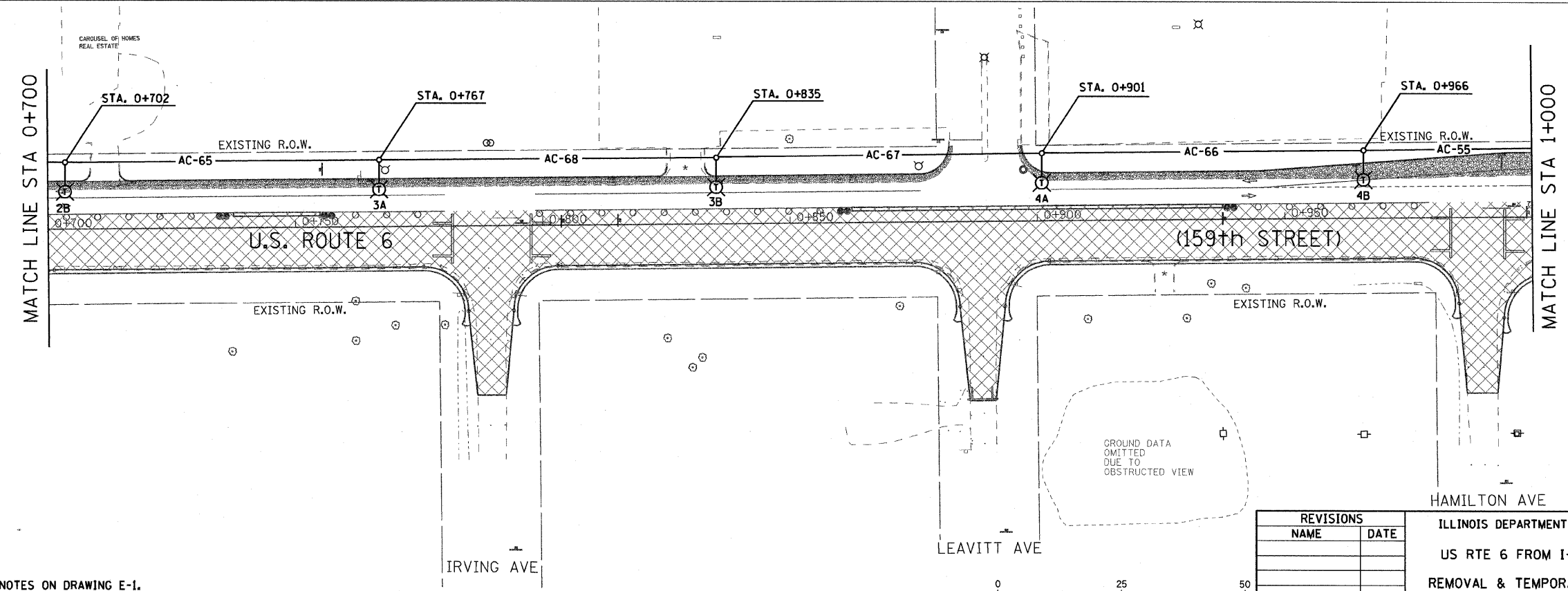
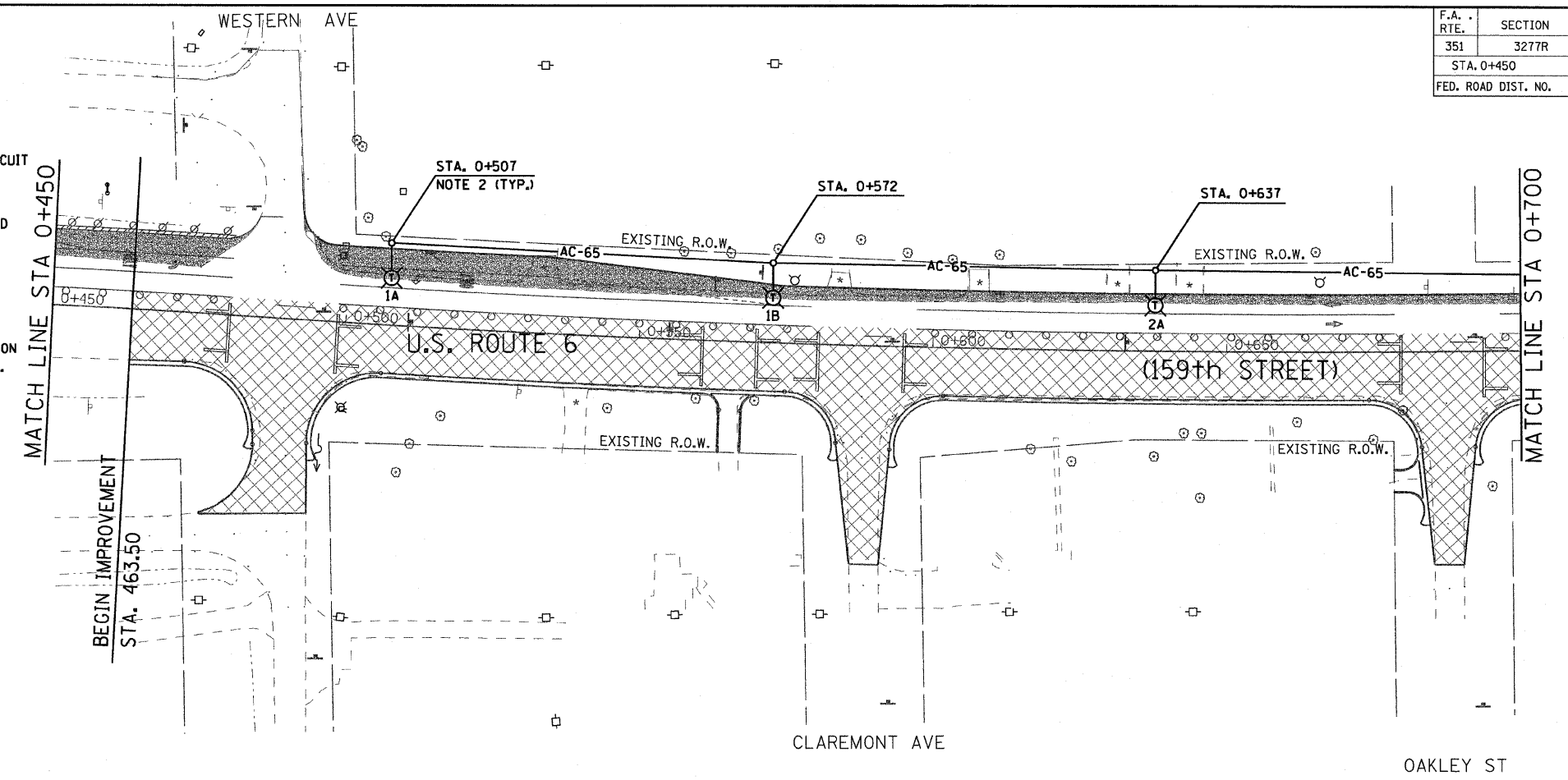


F.A. RTE.	SECTION	COUNTY	TOTAL SHEETS	SHEET NO.
351	3277R	COOK	541	335
STA. 0+450		TO STA. 1+000		
FED. ROAD DIST. NO.		ILLINOIS FED. AID PROJECT		
CONTRACT NO. 60774				

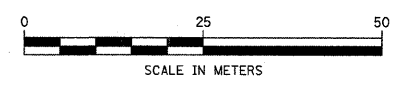
**LEGEND**

- ⊙(R) EXISTING LTG. POLE TO BE REMOVED
- ⊙(E) EXISTING LTG. POLE TO REMAIN "AS IS" ON THE EXISTING CIRCUIT DURING CONSTRUCTION STAGE I ONLY, TO BE REMOVED DURING CONSTRUCTION STAGE II.
- ▭ EXISTING PAVEMENT, SHOULDER CURB & GUTTER TO BE REMOVED BY OTHERS
- AC-XX- TEMPORARY AERIAL CABLE 3-1/C NO. 2 ALUMINUM WIRE WITH STEEL MESSENGER WIRE XX-INDICATES LENGTH IN METERS
- ⊙(A) LIGHT POLE, WOOD, WITH 4.5M MAST ARM AND 400W HPS LUMINAIRES DURING CONSTRUCTION STAGE I ONLY AND TO BE REMOVED DURING CONSTRUCTION STAGE II, SEE NOTE-6 ON SHEET E-1. LETTER DENOTES CIRCUIT IN EXISTING CONTROLLER.
- LIGHT POLE, WOOD, FOR SUPPORT OF TEMPORARY AERIAL CABLE DURING CONSTRUCTION STAGE I
- ⊠ EXISTING CONTROLLER TO BE REMOVED AT COMPLETION OF PROJECT
- ▨ CONSTRUCTION STAGE-I
- TEMPORARY PAVEMENT WITH TEMP. C&G



**NOTES:**

1. REFER TO LIGHTING NOTES ON DRAWING E-1.
2. SETBACK FOR THE TEMPORARY POLES SHALL BE 1.82 M (6') MINIMUM FROM THE BACK OF THE CURB.



Delta Engineering, Inc.  
CONSULTING ENGINEERS, CHICAGO, ILLINOIS.

REVISIONS	
NAME	DATE

**DRAWING No. E-2**

ILLINOIS DEPARTMENT OF TRANSPORTATION

US RTE 6 FROM I-294 TO IL RTE 1

REMOVAL & TEMPORARY LIGHTING PLAN

FROM STA. 0+450 TO STA. 1+000

DATE 01/28/09

DRAWN BY S.S./W.S.  
CHECKED BY C.K./H.S.