

PR. STEEL PLATE BEAM GUARD RAIL, TYPE A  
107+40.00 RT TO 109+15.00 RT  
108+88.75 LT TO 109+13.75 LT  
109+52.50 RT TO 110+52.50 RT  
109+51.25 LT TO 110+63.75 LT

PR. STEEL PLATE BEAM GUARD RAIL, ATTACHED TO STRUCTURES  
109+13.75 LT TO 109+51.25 LT  
109+15.00 RT TO 109+52.50 RT

PR. STEEL PLATE BEAM GUARD RAIL, (SHORT RADIUS)  
108+73.49 LT TO 108+88.75 LT  
110+63.75 LT TO 110+77.77 LT

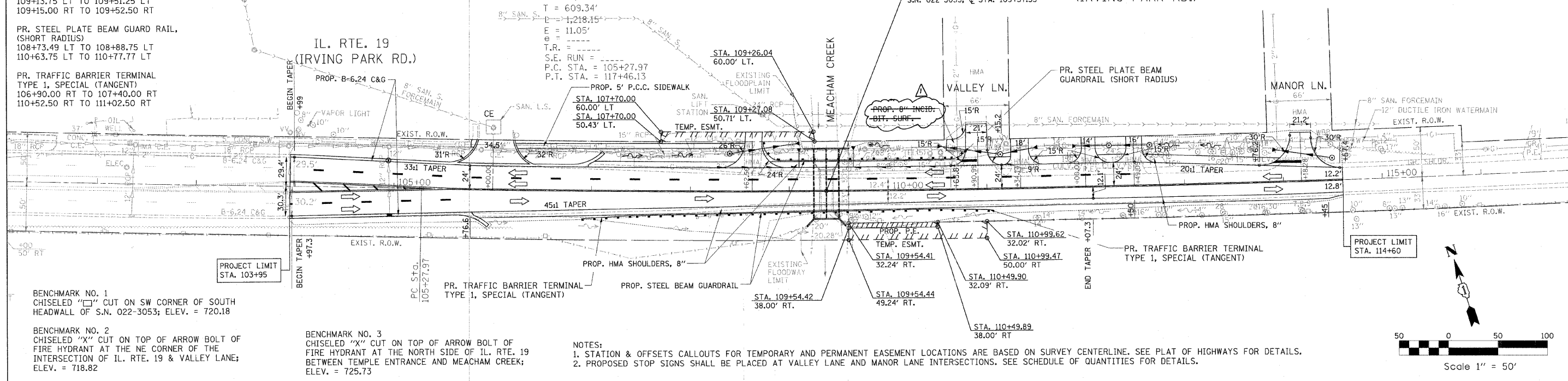
PR. TRAFFIC BARRIER TERMINAL TYPE 1, SPECIAL (TANGENT)  
106+90.00 RT TO 107+40.00 RT  
110+52.50 RT TO 111+02.50 RT

EXIST. CURVE E.I.L19-1  
PI STA. = 111+37.32  
 $\Delta = 4^\circ 09' 27''$  (LT)  
 $D = 0^\circ 20' 29''$   
 $R = 16,788.08'$   
 $T = 609.34'$   
 $E = 11.05'$   
 $F = 11.05'$   
 $T.R. =$   
 $S.E. RUN =$   
P.C. STA. = 105+27.97  
P.T. STA. = 117+46.13

PROPOSED 2-12'x9' RCBC  
S.N. 022-2005  
@ STA. 109+37.55  
EXISTING BRIDGE TO BE REMOVED  
S.N. 022-3053; @ STA. 109+37.55

IL. RTE. 19  
(IRVING PARK RD.)

PLAN	DATE	BY
REVISED		
NOTED		
NO.		



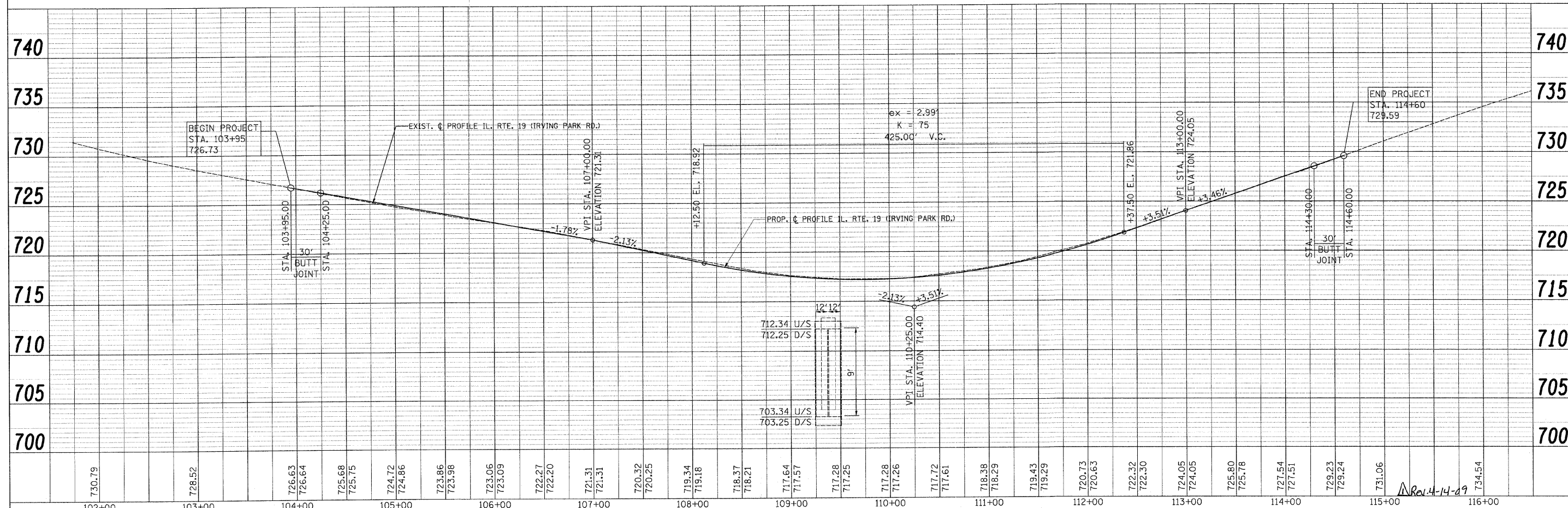
BENCHMARK NO. 1  
CHISELED "□" CUT ON SW CORNER OF SOUTH HEADWALL OF S.N. 022-3053; ELEV. = 720.18

BENCHMARK NO. 2  
CHISELED "X" CUT ON TOP OF ARROW BOLT OF FIRE HYDRANT AT THE NE CORNER OF THE INTERSECTION OF IL. RTE. 19 & VALLEY LANE; ELEV. = 718.82

BENCHMARK NO. 3  
CHISELED "X" CUT ON TOP OF ARROW BOLT OF FIRE HYDRANT AT THE NE CORNER OF THE INTERSECTION OF IL. RTE. 19 & VALLEY LANE; ELEV. = 718.82

- NOTES:  
1. STATION & OFFSETS CALLOUTS FOR TEMPORARY AND PERMANENT EASEMENT LOCATIONS ARE BASED ON SURVEY CENTERLINE. SEE PLAT OF HIGHWAYS FOR DETAILS.  
2. PROPOSED STOP SIGNS SHALL BE PLACED AT VALLEY LANE AND MANOR LANE INTERSECTIONS. SEE SCHEDULE OF QUANTITIES FOR DETAILS.

PROFILE	DATE	BY
REVISED		
NOTED		
NO.		



FILE NAME = ...10162492-sh1-plnprf(Prop)R1.dgn	USER NAME = Plotted by Administrator	DESIGNED - ST	REVISED - 03/08/2009	STATE OF ILLINOIS DEPARTMENT OF TRANSPORTATION		PROPOSED PLAN & PROFILE SHEET IL ROUTE 19 (IRVING PARK ROAD) OVER MEACHAM CREEK		F.A.U. RTE. 1321	SECTION 31T-2	COUNTY DUPAGE	TOTAL SHEETS 59	SHEET NO. 20
PLOT SCALE = 50.0000' / IN.	DATE = 09/2008	CHECKED - DMM	REVISED -			SCALE: 1"=50'H, 5'V	SHEET NO. OF SHEETS	STA. 103+95.00 TO STA. 114+60.00	FED. ROAD DIST. NO.	ILLINOIS FED. AID PROJECT	CONTRACT NO. 60A90	