

PLAN	DATE	BY
REVISIONS		
NO.		

PROFILE	DATE	BY
REVISIONS		
NO.		

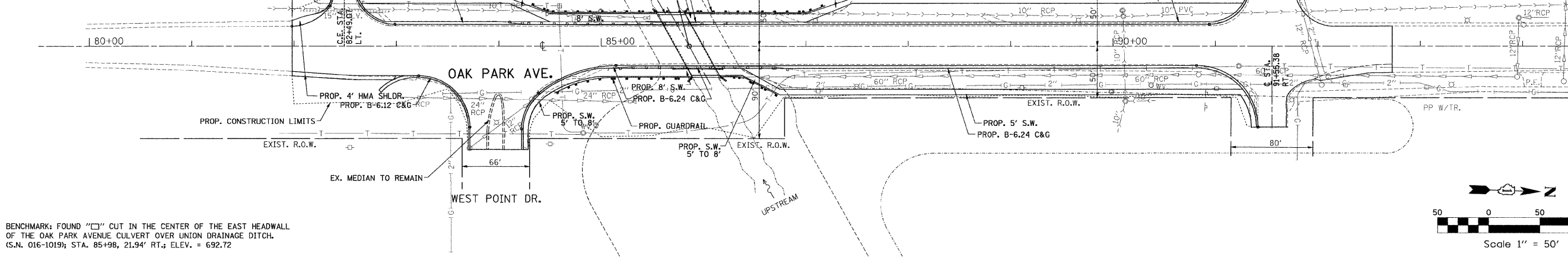
PROPOSED STEEL PLATE BEAM GUARDRAIL:
 STA. 84+52.21 TO STA. 85+52.21, LT STA. 84+51.96 TO STA. 85+39.46, LT
 STA. 86+02.21 TO STA. 86+89.71, LT STA. 85+95.71 TO STA. 86+95.71, LT
 STA. 85+11.46 TO STA. 86+86.46, RT STA. 85+12.30 TO STA. 86+74.80, RT
 STA. 86+47.17 TO STA. 86+58.35, RT STA. 86+45.85 TO STA. 86+58.35, RT

PROPOSED STEEL PLATE BEAM GUARDRAIL (ATTACHED TO STRUCTURES):
 STA. 85+52.21 TO STA. 86+02.21, LT
 STA. 85+86.46 TO STA. 86+23.96, RT

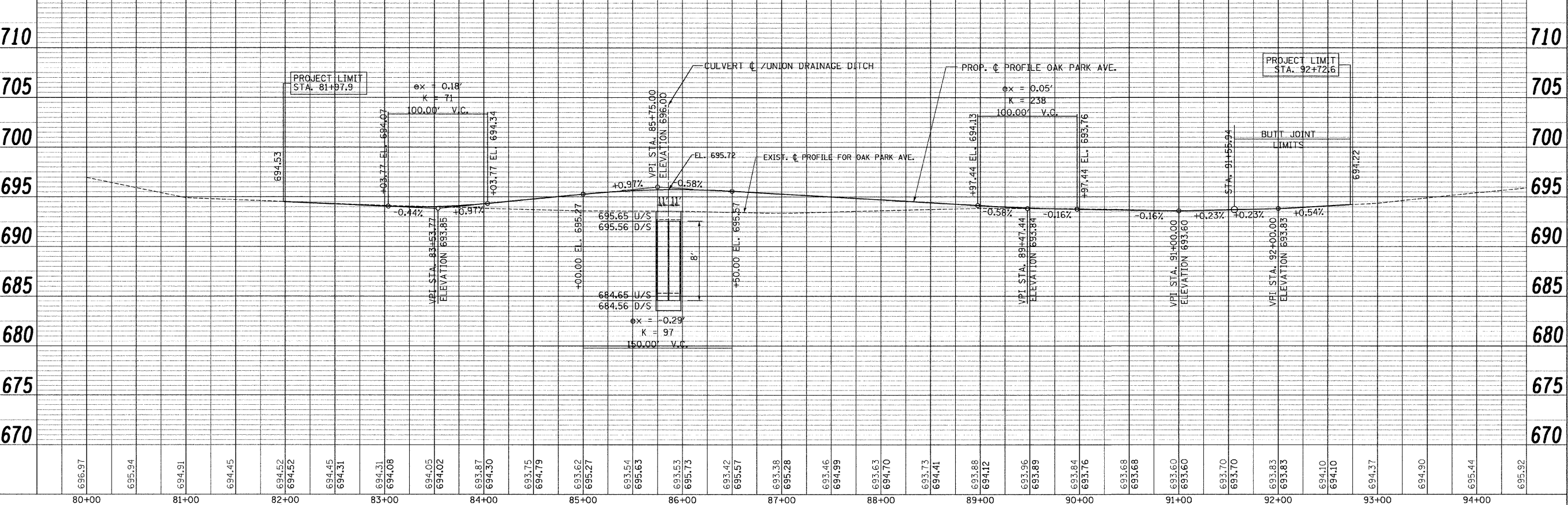
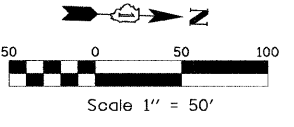
PROPOSED STEEL PLATE BEAM GUARDRAIL (SHORT RADIUS):
 STA. 84+46.21 TO STA. 84+52.21, LT STA. 84+46.21 TO STA. 84+51.96, LT
 STA. 86+89.71 TO STA. 87+04.20, LT STA. 86+95.71 TO STA. 87+04.20, LT
 STA. 84+68.31 TO STA. 85+11.46, RT STA. 84+68.31 TO STA. 85+12.30, RT
 STA. 86+23.96 TO STA. 86+47.17, RT STA. 86+31.05 TO STA. 86+45.85, RT

PROPOSED TRAFFIC BARRIER TERMINAL, TYPE 2:
 STA. 84+31.68 TO STA. 84+46.21, LT
 STA. 87+04.20 TO STA. 87+18.90, LT
 STA. 84+54.17 TO STA. 84+68.31, RT
 STA. 86+58.35 TO STA. 86+72.32, RT

PROPOSED TRAFFIC BARRIER TERMINAL, TYPE 5A:
 STA. 85+39.46 TO STA. 85+52.21, LT
 STA. 85+82.46 TO STA. 85+95.71, LT
 STA. 85+74.80 TO STA. 85+88.05, RT
 STA. 86+17.80 TO STA. 86+31.05, RT



BENCHMARK: FOUND "□" CUT IN THE CENTER OF THE EAST HEADWALL OF THE OAK PARK AVENUE CULVERT OVER UNION DRAINAGE DITCH. (S.N. 016-1019); STA. 85+98, 21.94' RT.; ELEV. = 692.72



FILE NAME = ...D168C07-sh1-plnprof(Prop).R1.dgn	USER NAME = Plotted by Administrator	DESIGNED - ST	REVISED - 03/05/2009	STATE OF ILLINOIS DEPARTMENT OF TRANSPORTATION	PROPOSED PLAN & PROFILE SHEET OAK PARK AVENUE OVER UNION DRAINAGE DITCH	F.A.U. RTE.	SECTION	COUNTY	TOTAL SHEETS	SHEET NO.
PLOT SCALE = 50.000' / IN.	CHECKED - FL	REVISED - 04/10/2009	2774			0306T	COOK	55	18	
PLOT DATE = 4/13/2009	DATE - 10/2008	REVISED -	CONTRACT NO. 60C07							
			FED. ROAD DIST. NO. ILLINOIS FED. AID PROJECT							