

INDEX OF SHEETS

- 1 COVER SHEET
- 2 INDEX OF SHEETS, STANDARDS, GENERAL NOTES & COMMITMENTS
- 3-5 SUMMARY OF QUANTITIES
- 6-9 TYPICAL SECTIONS
- 10-14 SCHEDULE OF QUANTITIES
- 15 ALIGNMENT & TIES
- 16 REMOVAL PLAN
- 17 EXISTING PLAN & PROFILE SHEET
- 18 PROPOSED PLAN & PROFILE SHEET
- 19 DETOUR PLAN
- 20 EROSION CONTROL PLAN
- 21 PROPOSED DRAINAGE PLAN
- 22 PLAT OF HIGHWAYS
- 23 INTERSECTION DETAIL - WEST POINT DRIVE
- 24 INTERSECTION DETAIL - SOUTH POINT DRIVE
- 25 PAVEMENT MARKING PLAN
- 26-36 STRUCTURAL PLANS
- 37-49 DISTRICT STANDARDS
- 50-55 CROSS SECTIONS
- 29 DELETED

STATE STANDARDS

- 000001-05 604091-02
- 001001-02 606001-04
- 001006 606006-02
- 280001-04 630001-08
- 424001-05 631011-05
- 442201-03 635001-01
- 542301-02 635006-03
- 601001-03 635011-02
- 601101-01 667101-01
- 602001-01 701201-03
- 602301-02 701901-01
- 602306-02 704001-05
- 602401-02 720001-01
- 602411-01 720011-01
- 602421-01 728001-01
- 602601-02 729001-01
- 602701-02 780001-02
- 604001-03 781001-03
- 604036-02 BLR 26-1
- BLR 27-1

DISTRICT STANDARDS

- BD01 TC10
- BD02 TC11
- BD03 TC13
- BD32 TC21
- BD34 TC22
- BD37 TC26
- BD51

COMMITMENTS

NO COMMITMENTS HAVE BEEN MADE FOR THIS PROJECT.

GENERAL NOTES

THE LOCATIONS OF EXISTING WATER MAINS, GAS MAINS, SEWERS, ELECTRIC POWER LINES, TELEPHONE LINES AND OTHER UTILITIES AS SHOWN ON THE PLANS ARE BASED ON CAREFUL FIELD INVESTIGATION AND THE BEST INFORMATION AVAILABLE, BUT THEY ARE NOT GUARANTEED. UNLESS ELEVATIONS ARE SHOWN --- ALL UTILITY LOCATIONS SHOWN ON THE CROSS SECTIONS ARE BASED ON THE APPROXIMATE DEPTH SUPPLIED BY THE UTILITY COMPANY. IT SHALL BE THE CONTRACTOR'S RESPONSIBILITY TO ASCERTAIN THEIR EXACT LOCATION FROM THE UTILITY COMPANIES AND BY FIELD INSPECTION.

ABANDONED UNDERGROUND UTILITIES THAT CONFLICT WITH CONSTRUCTION SHALL BE DISPOSED OUTSIDE THE LIMITS OF RIGHT-OF-WAY ACCORDING TO ARTICLE 202.03 OF THE STANDARD SPECIFICATIONS AND AS DIRECTED BY THE ENGINEER. THIS WORK WILL NOT BE PAID FOR SEPARATELY BUT SHALL BE CONSIDERED INCLUDED IN THE COST OF EARTH EXCAVATION.

THE CONTRACTOR SHALL COORDINATE ACTIVITIES WITH ALL UTILITIES WITHIN THE PROJECT LIMITS.

THE CONTRACTOR SHALL BE RESPONSIBLE FOR PROTECTING UTILITY PROPERTY DURING CONSTRUCTION OPERATIONS AS OUTLINED IN ARTICLE 107.31 OF THE STANDARD SPECIFICATIONS. A MINIMUM OF 48 HOURS ADVANCE NOTICE IS REQUIRED FOR NON-EMERGENCY WORK. THE JULIE NUMBER IS 800-892-0123.

THE APPLICABLE PORTIONS OF ARTICLE 105.07 OF THE STANDARD SPECIFICATIONS SHALL APPLY EXCEPT FOR THE FOLLOWING: THE CONTRACTOR SHALL BE RESPONSIBLE TO LOCATE THE VERTICAL DEPTHS OF UNDERGROUND UTILITIES WHICH MAY INTERFERE WITH CONSTRUCTION OPERATIONS. THIS WORK WILL NOT BE PAID FOR SEPARATELY, BUT SHALL BE CONSIDERED AS INCLUDED IN THE COST OF THE PROJECT.

STREAM FLOWS SHALL BE MAINTAINED THROUGHOUT THE PROJECT. NORMAL FLOWS SHALL BE ALLOWED TO PASS AT THE RATE IT ENTERS THE JOBSITE. HIGH FLOWS SHALL BE ALLOWED TO PASS WITHOUT CAUSING DAMAGE TO UPSTREAM PROPERTIES.

THE FINISHED EARTHWORK SHALL HAVE A VEGETATION SUSTAINING SOIL COVERING THE TOP FOUR INCHES IN AREAS TO BE SEEDED OR SODDED. THE VEGETATION SUSTAINING SOIL REQUIRED WILL NOT BE PAID FOR SEPARATELY BUT SHALL BE INCLUDED IN THE COST OF TOPSOIL FURNISH & PLACE, 4".

TREE REMOVAL MAY BE NECESSARY PRIOR TO UTILITY COMPANIES BEING ABLE TO RELOCATE THEIR FACILITIES OUTSIDE THE CONSTRUCTION LIMITS. THE CONTRACTOR SHOULD COORDINATE ANY CONTRACT TREE REMOVAL ACTIVITIES WITH THE UTILITY COMPANIES TO ELIMINATE CONFLICTS AND POTENTIAL DELAYS CAUSED BY UTILITY TREE REMOVAL ACTIVITIES OR INCOMPLETE UTILITY RELOCATIONS.

ACCESS MUST BE MAINTAINED TO ALL EXISTING PROPERTIES DURING CONSTRUCTION PER ARTICLE 107.09 UNLESS ARRANGEMENTS ARE MADE IN WRITING BY THE CONTRACTOR WITH THE PROPERTY OWNERS WITH A COPY TO THE ENGINEER FOR SHORT-TERM CLOSURES.

PRIOR APPROVAL FROM IDOT SHALL BE OBTAINED FOR ANY TREE REMOVAL BEYOND THE LIMITS/LOCATIONS INCLUDED IN THE PLANS.

PRIOR TO THE USE OF ANY PROPOSED BORROW AREAS, USE AREAS (TEMPORARY ACCESS ROADS, DETOURS, RUN-AROUNDS, ETC.) AND/OR WASTE AREAS, THE CONTRACTOR SHALL FILE THE REQUIRED ENVIRONMENTAL RESOURCE REQUEST SURVEYS ACCORDING TO SECTION 107.22 OF THE STANDARD SPECIFICATIONS. THESE SURVEYS ARE REQUIRED IN ORDER FOR THE DEPARTMENT TO CONDUCT CULTURAL AND BIOLOGICAL RESOURCE SURVEYS FOR THE PROPOSED SITE.

PRIOR TO ANY WASTE MATERIALS BEING REMOVED FROM THE CONSTRUCTION SITE THE REQUIRED ENVIRONMENTAL RESOURCE SURVEYS WILL NEED TO BE OBTAINED AND FILED BY THE CONTRACTOR. EXCESS WASTE PRODUCTS REMOVED FROM THE CONSTRUCTION SITE SHALL BE DISPOSED OF AS REQUIRED IN SECTION 202.03 OF THE STANDARD SPECIFICATIONS.

ANY PROTRUDING METAL BARS SHALL BE REMOVED PRIOR TO THE DISPOSAL OF BROKEN CONCRETE AT APPROVED DISPOSAL SITES.

WHERE SECTION OR SUBSECTION MONUMENTS ARE ENCOUNTERED, THE ENGINEER SHALL BE NOTIFIED BEFORE SUCH MONUMENTS ARE REMOVED. THE CONTRACTOR SHALL PROTECT AND CAREFULLY PRESERVE ALL MONUMENTS UNTIL AN AUTHORIZED SURVEYOR OR AGENT HAS WITNESSED OR OTHERWISE REFERENCED THEIR LOCATION. THE CONTRACTOR WILL BE RESPONSIBLE FOR HAVING AN AUTHORIZED SURVEYOR RE-ESTABLISH ANY SECTION OR SUBSECTION MONUMENTS DESTROYED BY HIS OPERATIONS.

THE THICKNESS OF THE HOT-MIX ASPHALT OVERLAY SHOWN ON THE PLANS IS THE NOMINAL THICKNESS FOR THE OVERLAY. DEVIATIONS FROM THE NOMINAL THICKNESS WILL ONLY BE PERMITTED WHEN SUCH DEVIATIONS OCCUR DUE TO IRREGULARITIES IN THE EXISTING SURFACE ON WHICH THE OVERLAY IS PLACED.

SEEDING WILL NOT BE PERMITTED AT ANY TIME WHEN THE GROUND IS FROZEN, WET, OR IN AN UNTILLABLE CONDITION.

THE HMA SURFACE OF THE MAINLINE, ALL MAILBOX TURNOUTS, PRIVATE ENTRANCES, INTERSECTIONS, COMMERCIAL ENTRANCES, AND SIDE ROADS SHALL BE MADE NEATLY, IN A WORKMANLIKE MANNER, AND SHALL ACCURATELY CONFORM TO THE SHAPES AND DIMENSIONS SHOWN ON THE PLAN DETAILS. IF REQUIRED BY THE ENGINEER, THE CONTRACTOR SHALL BE REQUIRED TO SAW CUT THE HMA SURFACE TO CONFORM TO THE SHAPES AND DIMENSIONS SHOWN ON THE PLAN DETAILS. THIS WORK SHALL BE INCLUDED IN THE COST OF THE HMA SURFACE.

FOR STABILIZATION, ALL TYPE III BARRICADES SHALL REQUIRE A MINIMUM OF FOUR SAND BAGS PER BARRICADE.

THE CONTRACTOR SHALL SUBMIT TO THE ENGINEER A DESCRIPTION OF LOCATION, ELEVATION, AND COORDINATES FOR EACH PERMANENT SURVEY MARKER. THE ENGINEER SHALL SUBMIT THIS INFORMATION TO THE SURVEY CREW.

EXISTING FENCES SHALL BE REMOVED UP TO EXISTING RIGHT OF WAY WITHIN THE PROJECT LIMITS AND AS SHOWN IN THE PLANS. THIS WORK SHALL BE CONSIDERED AS INCLUDED IN THE COST OF EARTH EXCAVATION.

TWO WEEKS PRIOR TO PLACEMENT OF PERMANENT PAVEMENT MARKINGS THE ENGINEER SHALL CONTACT MS. PATRICE HARRIS, AREA TRAFFIC FIELD TECHNICIAN, AT (708) 597-9800.

ESTIMATED QUANTITIES FOR FURNISHED EXCAVATION HAVE BEEN INCLUDED IN THE CONTRACT PLANS, DUE TO POTENTIAL SETTLEMENT DURING CONSTRUCTION. THESE QUANTITIES SHALL BE USED ONLY AS APPROVED BY THE ENGINEER.

THE CONTRACTOR SHALL PROVIDE LABOR AND MATERIALS REQUIRED TO IMPRINT PAVEMENT STATION NUMBERS IN THE FINISHED SURFACE OF THE PAVEMENT AND/OR OVERLAY. THE NUMBERS SHALL BE APPROXIMATELY 3/4 INCH WIDE, 5 INCHES HIGH AND 5/8 INCH DEEP.

THE PAVEMENT STATION NUMBERS SHALL BE INSTALLED AS SPECIFIED HEREIN:
INTERVAL - 200 FEET
BOTTOM OF NUMBERS - 6 INCHES FROM THE INSIDE EDGE OF THE PAVEMENT MARKING

- LOCATION:
- 2,3, & 5 LANE PAVEMENTS - RIGHT EDGE OF PAVEMENT IN DIRECTION OF INCREASING STATIONS
 - MULTI-LANE DIVIDED ROADWAYS - OUTSIDE EDGE OF PAVEMENT IN BOTH DIRECTIONS
 - RAMPS - ALONG BASELINE EDGE OF PAVEMENT
- POSITION - STATIONS SHALL BE PLACED SO THEY CAN BE READ FROM THE ADJACENT SHOULDER
FORMAT - "XXX", WHERE X REPRESENTS THE PAVEMENT STATION

THIS WORK WILL NOT BE PAID FOR SEPARATELY, BUT WILL BE CONSIDERED INCLUDED IN THE COST OF THE ASSOCIATED PAVEMENT AND/OR OVERLAY PAY ITEMS.

THE ENGINEER WILL BE THE SOLE JUDGE CONCERNING CURING TIME FOR THE VARIOUS HMA LIFTS.

AT ALL LOCATIONS WHERE THE PROPOSED HOT MIX ASPHALT OR CONCRETE PAVEMENT JOINS THE EXISTING HOT MIX ASPHALT OR CONCRETE PAVEMENT, A FULL DEPTH SAWED JOINT SHALL BE CONSTRUCTED. THE COST OF SAW CUTS AND JOINTS IS CONSIDERED AS INCLUDED IN THE COST OF THE TYPE OF PAVEMENT BEING CONSTRUCTED.

CONTINUOUS PAVING OPERATIONS ON THE MAIN ROADWAY SHALL BE MAINTAINED AT ALL TIMES DURING THE CONSTRUCTION OF THE HOT-MIX ASPHALT SURFACE. NO INTERRUPTIONS FOR SIDE ROADS, ENTRANCES, TURN LANES, ETC. WILL BE ALLOWED.

THE CONTRACTOR SHALL VERIFY ALL DIMENSIONS AND CONDITIONS IN THE FIELD PRIOR TO CONSTRUCTION AND ORDERING OF MATERIALS.

THE CONTRACTOR SHALL CONSULT WITH THE ENGINEER IN REGARD TO THE EXACT LENGTH OF THE BOX/PIPE CULVERTS, STORM SEWERS, AND/OR PIPE DRAINS REQUIRED PRIOR TO ORDERING THESE ITEMS.

THE WORK AND MATERIALS REQUIRED TO CONNECT ANY CULVERT OR SEWER TO ANOTHER DRAINAGE STRUCTURE OR PIPE WILL NOT BE PAID FOR SEPARATELY, BUT SHALL BE CONSIDERED AS INCLUDED IN THE CONTRACT UNIT PRICE BID FOR THE CULVERT OR SEWER ITEMS.

ALL ENGINEER'S FIELD OFFICES SHALL CONTAIN ONE FULLY-EQUIPPED FIRST-AID CABINET. THIS ITEM WILL NOT BE PAID FOR SEPARATELY, BUT SHALL BE CONSIDERED AS INCLUDED IN THE PAY ITEM FOR ENGINEER'S FIELD OFFICE.

ADD THE FOLLOWING SENTENCE TO THE END OF PARAGRAPH 670.02(I) AND 670.04(E):
ALL OF THE TELEPHONE LINES PROVIDED SHALL HAVE UNPUBLISHED NUMBERS.

THE RESIDENT ENGINEER AND/OR CONTRACTOR SHALL NOTIFY THE TRAFFIC STUDIES TECHNICIAN IN PROGRAM DEVELOPMENT AT LEAST ONE WEEK PRIOR TO THE INSTALLATION OF THE TRAFFIC COUNTER LOOP DETECTOR TO DETERMINE EXACT LOCATION.

THE CONTRACTOR SHALL REMOVE OR RELOCATE ALL CONFLICTING MAILBOXES, EXISTING STREET NAME SIGNS, AND ALL PRIVATE COMMERCIAL SIGNS IN ACCORDANCE WITH ARTICLES 107.20 & 107.25 AND AS DIRECTED BY THE ENGINEER. SIGN LOCATIONS MAY BE ADJUSTED IN THE FIELD TO AVOID ANY FOUND UTILITIES AND AS DIRECTED BY THE ENGINEER. THIS WORK SHALL BE CONSIDERED AS INCLUDED IN THE COST OF EARTH EXCAVATION. ALL WOOD POST LOCATIONS SHALL BE VERIFIED WITH THE BUREAU OF OPERATIONS, TRAFFIC SECTION, BEFORE INSTALLATION.

IF ANY UNSUITABLE MATERIAL IS ENCOUNTERED DURING CONSTRUCTION, IT WILL BE NECESSARY TO REMOVE THE UNSUITABLE MATERIAL AND REPLACE IT WITH A SUITABLE MATERIAL AS APPROVED BY THE ENGINEER.

INCIDENTAL HOT-MIX ASPHALT SURFACING SHALL BE USED FOR ALL TEMPORARY SIDE ROAD CROSSINGS. AGGREGATE FOR DRIVEWAY MAINTENANCE MAY BE USED FOR ALL DRIVEWAY CROSSINGS EXCEPT DURING WINTER SHUTDOWN IN ACCORDANCE WITH ARTICLE 107.09.

AT LOCATIONS WHERE CLEARING IS INDICATED ON THE PLANS BEYOND THE LIMITS OF THE PROPOSED EXCAVATION OR EMBANKMENT, THE CONTRACTOR SHALL RESTORE THE DISTURBED EARTH BY BALDING AND SHAPING TO BLEND WITH THE ADJACENT GROUND. THE CLEARING WILL NOT BE PAID FOR SEPARATELY BUT SHALL BE INCLUDED IN THE COST OF EARTH EXCAVATION. RESEEDING OR RESODDING WILL BE AS PROVIDED IN THE PLANS.

HOT-MIX ASPHALT MIXTURE REQUIREMENTS		
MIXTURE TYPE	AC TYPE	AIR VOIDS
PAVEMENT RESURFACING		
HOT-MIX ASPHALT SURFACE COURSE, MIX "D", N70, (IL-9.5mm)	PG 64-22	4% @ 70 Gyr.
FULL-DEPTH PAVEMENT AND PAVEMENT WIDENING		
HOT-MIX ASPHALT SURFACE COURSE, MIX "D", N70, (IL-9.5mm); 2"	PG 64-22	4% @ 70 Gyr.
HOT-MIX ASPHALT BINDER COURSE, (BINDER IL-19mm), N70	PG 64-22*	4% @ 70 Gyr.
HOT-MIX ASPHALT SHOULDERS		
HOT-MIX ASPHALT SHOULDERS, 8"	PG 64-22*	4% @ 70 Gyr.
INCIDENTAL HMA SURFACING		
INCIDENTAL HOT-MIX ASPHALT SURFACING, 8"	PG 64-22*	4% @ 70 Gyr.

THE UNIT WEIGHT USED TO CALCULATE ALL HMA SURFACE MIXTURE QUANTITIES IS 112 LBS/SQ YD/IN.
* WHEN RAP EXCEEDS 20%, THE NEW ASPHALT BINDER IN THE MIX SHALL BE PG 58-22.

FILE NAME =	USER NAME = Plotted by Administrator	DESIGNED - ST	REVISED - 4/10/2009	STATE OF ILLINOIS DEPARTMENT OF TRANSPORTATION	INDEX OF SHEETS, STANDARDS, GENERAL NOTES & COMMITMENTS OAK PARK AVENUE OVER UNION DRAINAGE DITCH	F.A.U. RTE.	SECTION	COUNTY	TOTAL SHEETS	SHEET NO.
...D160C07-shr-gennote.dgn		DRAWN - ST	REVISED -			2774	0306T	COOK	55	2
	PLOT SCALE = 28.0000' / IN.	CHECKED - FL	REVISED -			CONTRACT NO. 60C07				
	PLOT DATE = 4/13/2009	DATE - 10/2008	REVISED -			FED. ROAD DIST. NO. [ILLINOIS] FED. AID PROJECT				
				SCALE: NONE	SHEET NO. OF SHEETS STA. TO STA.					

STATE OF ILLINOIS
DEPARTMENT OF TRANSPORTATION

SUMMARY OF QUANTITIES				CONSTRUCTION TYPE CODES	
PAY CODE	ITEM DESCRIPTION	UNIT	URBAN TOTAL QUANTITY	80% FEDERAL / 20% STATE	
				ROADWAY 1000	CULVERT X028-2A
20100500	TREE REMOVAL, ACRES	ACRE	0.25	0.25	
20101400	NITROGEN FERTILIZER NUTRIENT	POUND	105	105	
20101500	PHOSPHORUS FERTILIZER NUTRIENT	POUND	105	105	
20101600	POTASSIUM FERTILIZER NUTRIENT	POUND	105	105	
20200100	EARTH EXCAVATION	CU YD	5980	5980	
20201200	REMOVAL AND DISPOSAL OF UNSUITABLE MATERIAL	CU YD	4615	3871	744
20300100	CHANNEL EXCAVATION	CU YD	182	182	
20400800	FURNISHED EXCAVATION	CU YD	1800	1800	
20700220	POROUS GRANULAR EMBANKMENT	CU YD	1150	1150	
20700420	POROUS GRANULAR EMBANKMENT, SUBGRADE	CU YD	1320	1320	
20800150	TRENCH BACKFILL	CU YD	140.7	140.7	
21001000	GEOTECHNICAL FABRIC FOR GROUND STABILIZATION	SQ YD	3950	3950	
21101615	TOP SOIL FURNISH AND PLACE, 4"	SQ YD	4814.7	4814.7	
25000210	SEEDING, CLASS 2A	ACRE	1	1	
25100115	MULCH, METHOD 2	ACRE	1	1	
25100630	EROSION CONTROL BLANKET	SQ YD	4855.9	4855.9	
28000250	TEMPORARY EROSION CONTROL SEEDING	POUND	600	600	
28000300	TEMPORARY DITCH CHECKS	EACH	16	16	
28000400	PERIMETER EROSION BARRIER	FOOT	1047.6	1047.6	
28000500	AND INLET PIPE PROTECTION	EACH	11	11	
28000510	INLET FILTERS	EACH	16	16	
28100107	STONE RIPRAP, CLASS A4	SQ YD	121		121
28200200	FILTER FABRIC	SQ YD	168		168

SUMMARY OF QUANTITIES				CONSTRUCTION TYPE CODES	
PAY CODE	ITEM DESCRIPTION	UNIT	URBAN TOTAL QUANTITY	80% FEDERAL / 20% STATE	
				ROADWAY 1000	CULVERT X028-2A
40600200	BITUMINOUS MATERIALS (PRIME COAT)	TON	4.5	4.5	
40600300	AGGREGATE (PRIME COAT)	TON	16.2	16.2	
40600400	MIXTURE FOR CRACKS, JOINTS, AND FLANGEWAYS	TON	4.3	4.3	
40600895	CONSTRUCTING TEST STRIP	EACH	4	4	
40600982	HOT-MIX ASPHALT SURFACE REMOVAL - BUTT JOINT	SQ YD	1151	1151	
40601005	HOT-MIX ASPHALT REPLACEMENT OVER PATCHES	TON	136	136	△
40600985	HOT-MIX ASPHALT BINDER COURSE, IL 10.0, N70	TON	2074.0	2074.0	
40600940	HOT-MIX ASPHALT SURFACE COURSE, MIX "D", N70	TON	744	744	
40701856	HOT-MIX ASPHALT PAVEMENT (FULL DEPTH), 8 3/4"	SQ YD	6367.4	6367.4	
40800050	INCIDENTAL HOT-MIX ASPHALT SURFACING	TON	30	30	
42001300	PROTECTIVE COAT	SQ YD	3213	3213	
42400200	PORTLAND CEMENT CONCRETE SIDEWALK 5 INCH	SQ FT	9419	9419	
42400800	DETECTABLE WARNINGS	SQ FT	36.3	36.3	
44000100	PAVEMENT REMOVAL	SQ YD	5090.8	5090.8	
44000100	HOT-MIX ASPHALT SURFACE REMOVAL, VARIABLE DEPTH	SQ YD	875.7	875.7	
44000500	COMBINATION CURB AND GUTTER REMOVAL	FOOT	993	993	
44000600	SIDEWALK REMOVAL	SQ FT	773	773	
44000920	BITUMINOUS CONCRETE SHOULDER REMOVAL	SQ YD	432	432	
44002216	HOT-MIX ASPHALT REMOVAL OVER PATCHES, 4"	SQ YD	268	268	
44002600	GUTTER OUTLET REMOVAL	FOOT	59.6	59.6	
44201753	CLASS D PATCHES, TYPE II, 9 INCH	SQ YD	268	268	
44300200	STRIP REFLECTIVE CRACK CONTROL TREATMENT	FOOT	2152	2152	
48203029	HOT-MIX ASPHALT SHOULDERS, 8"	SQ YD	71	71	
50100100	REMOVAL OF EXISTING STRUCTURES	EACH	1		1
50105220	PIPE CULVERT REMOVAL	FOOT	87	87	
50900405	STEEL RAILING, TYPE TP-1	FOOT	72.7		72.7 △

SUMMARY OF QUANTITIES

COLLINS ENGINEERS DESIGNED: LDB CHECKED: JMH DATE: 01/29/09 DRAWN: DR		QUANTITIES SHEET NO. 1 OF 3 SHEETS	F.A.U. RTE.	SECTION	COUNTY	TOTAL SHEETS	SHEET NO.
			2774	0306T	COOK	55	3
			SN: 016-2848		CONTRACT NO. 60C07		
			FED. ROAD DIST. NO. _ ILLINOIS FED. AID PROJECT				

△ Rev. 4-13-09

STATE OF ILLINOIS
DEPARTMENT OF TRANSPORTATION

SUMMARY OF QUANTITIES				CONSTRUCTION TYPE CODES 80% FEDERAL / 20% STATE	
PAY CODE	ITEM DESCRIPTION	UNIT	TOTAL QUANTITY	ROADWAY 1000	CULVERT X028-2A
51500100	NAME PLATES	EACH	1		1
54001000	BOX CULVERT END SECTIONS	EACH	2		2
54011108	PRECAST CONCRETE BOX CULVERT 11'X8"	FOOT	105		105
54213657	PRECAST REINFORCED CONCRETE FLARED END SECTIONS 12"	EACH	2	2	
54213660	PRECAST REINFORCED CONCRETE FLARED END SECTIONS 15"	EACH	1	1	
54213663	PRECAST REINFORCED CONCRETE FLARED END SECTIONS 18"	EACH	4	4	
54213705	PRECAST REINFORCED CONCRETE FLARED END SECTIONS 60"	EACH	1	1	
NP 55030200	STORM SEWERS TO BE CLEANED 24"	FOOT	169.6	169.6	
55100900	STORM SEWER REMOVAL 18"	FOOT	101.8	101.8	
NP 55039000	STORM SEWERS TO BE CLEANED 60"	FOOT	410.6	410.6	
55102100	STORM SEWER REMOVAL 60"	FOOT	58	58	
60100060	CONCRETE HEADWALL FOR PIPE DRAINS	EACH	2	2	
60107600	PIPE UNDERDRAINS 4"	FOOT	200	200	
60108100	PIPE UNDERDRAINS 4" (SPECIAL)	FOOT	50	50	
60109510	PIPE UNDERDRAINS, FABRIC LINED TRENCH 4"	FOOT	250	250	
60200805	CATCH BASINS, TYPE A, 4'-DIAMETER, TYPE 8 GRATE	EACH	2	2	
60201340	CATCH BASINS, TYPE A, 4'-DIAMETER, TYPE 24 FRAME AND GRATE	EACH	6	6	
60221000	MANHOLES, TYPE A, 5'-DIAMETER, TYPE 1 FRAME, OPEN LID	EACH	1	1	
60224445	MANHOLES, TYPE A, 7'-DIAMETER, TYPE 1 FRAME, OPEN LID	EACH	2	2	
60224446	MANHOLES, TYPE A, 7'-DIAMETER, TYPE 1 FRAME, CLOSED LID	EACH	1	1	
60228400	MANHOLES, SPECIAL	EACH	2	2	
60500040	REMOVING MANHOLES	EACH	3	3	
60603300	GUTTER OUTLET	EACH	1	1	
60603800	COMBINATION CONCRETE CURB AND GUTTER, TYPE B-6.12	FOOT	467.1	467.1	
60605000	COMBINATION CONCRETE CURB AND GUTTER, TYPE B-6.24	FOOT	1362.6	1362.6	

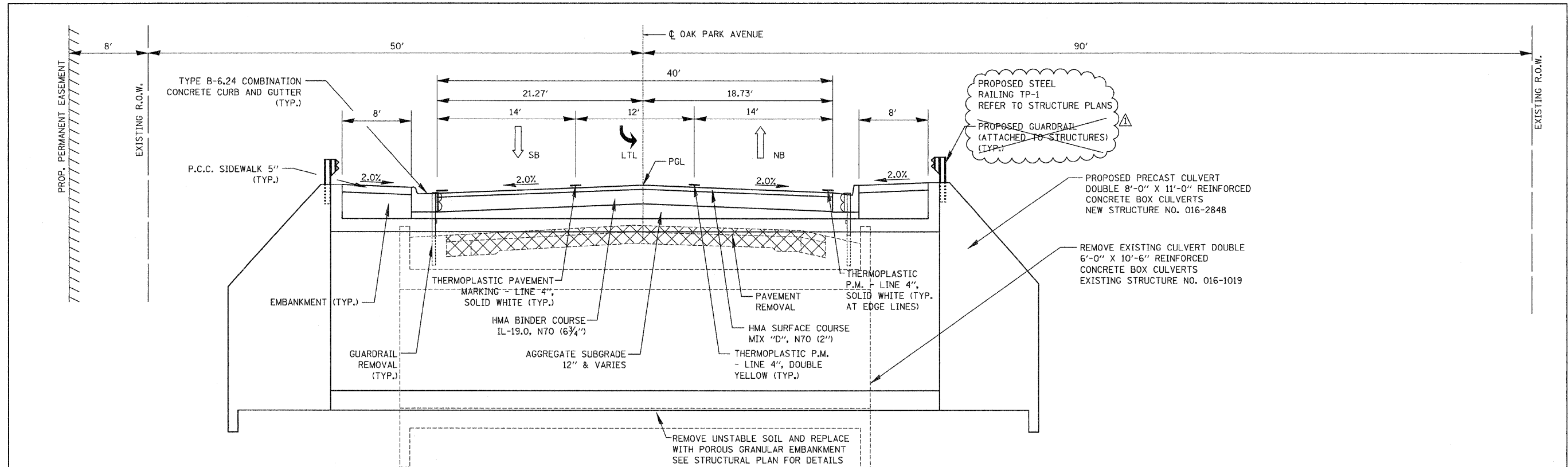
NP = NON-PARTICIPATING
* - Specialty Items

SUMMARY OF QUANTITIES				CONSTRUCTION TYPE CODES 80% FEDERAL / 20% STATE	
PAY CODE	ITEM DESCRIPTION	UNIT	TOTAL QUANTITY	ROADWAY 1000	CULVERT X028-2A
* 63000000	STEEL PLATE BEAM GUARD RAIL, TYPE A	FOOT	275	275	
* 63000025	STEEL PLATE BEAM GUARD RAIL, ATTACHED TO STRUCTURES	FOOT	87.5	87.5	
* 63100045	TRAFFIC BARRIER TERMINAL, TYPE 2	EACH	4	4	
* 63100075	TRAFFIC BARRIER TERMINAL, TYPE 5A	EACH	4	4	
* 63200310	GUARDRAIL REMOVAL	FOOT	391.5	391.5	
* 63300725	STEEL PLATE BEAM GUARD RAIL (SHORT RADIUS)	FOOT	73.1	73.1	
63500105	DELINEATORS	EACH	4	4	
66700205	PERMANENT SURVEY MARKERS, TYPE I	EACH	1	1	
66700305	PERMANENT SURVEY MARKERS, TYPE II	EACH	1	1	
67000400	ENGINEER'S FIELD OFFICE, TYPE A	CAL MO	12	12	
67100100	MOBILIZATION	L SUM	1	1	
70100450	TRAFFIC CONTROL AND PROTECTION, STANDARD 701201	L SUM	1	1	
70102550	TRAFFIC CONTROL AND PROTECTION FOR TEMPORARY DETOUR	EACH	1	1	
70103815	TRAFFIC CONTROL SURVEILLANCE	CAL DA	120	120	
70106800	CHANGEABLE MESSAGE SIGN	CAL MO	24	24	
70300100	SHORT-TERM PAVEMENT MARKING	FOOT	1200	1200	
70300200	TEMPORARY PAVEMENT MARKING	FOOT	1200	1200	
70300625	TEMPORARY PAINT PAVEMENT MARKING LINE 4"	FOOT	2000	2000	
70301000	WORK ZONE PAVEMENT MARKING REMOVAL	SQ FT	1070	1070	
* 78000100	THERMOPLASTIC PAVEMENT MARKING - LETTERS AND SYMBOLS	SQ FT	218.4	218.4	
* 78000200	THERMOPLASTIC PAVEMENT MARKING - LINE 4"	FOOT	4557.9	4557.9	
* 78000400	THERMOPLASTIC PAVEMENT MARKING - LINE 6"	FOOT	682.8	682.8	
* 78000600	THERMOPLASTIC PAVEMENT MARKING - LINE 12"	FOOT	214	214	
* 78000650	THERMOPLASTIC PAVEMENT MARKING - LINE 24"	FOOT	71	71	

SUMMARY OF QUANTITIES

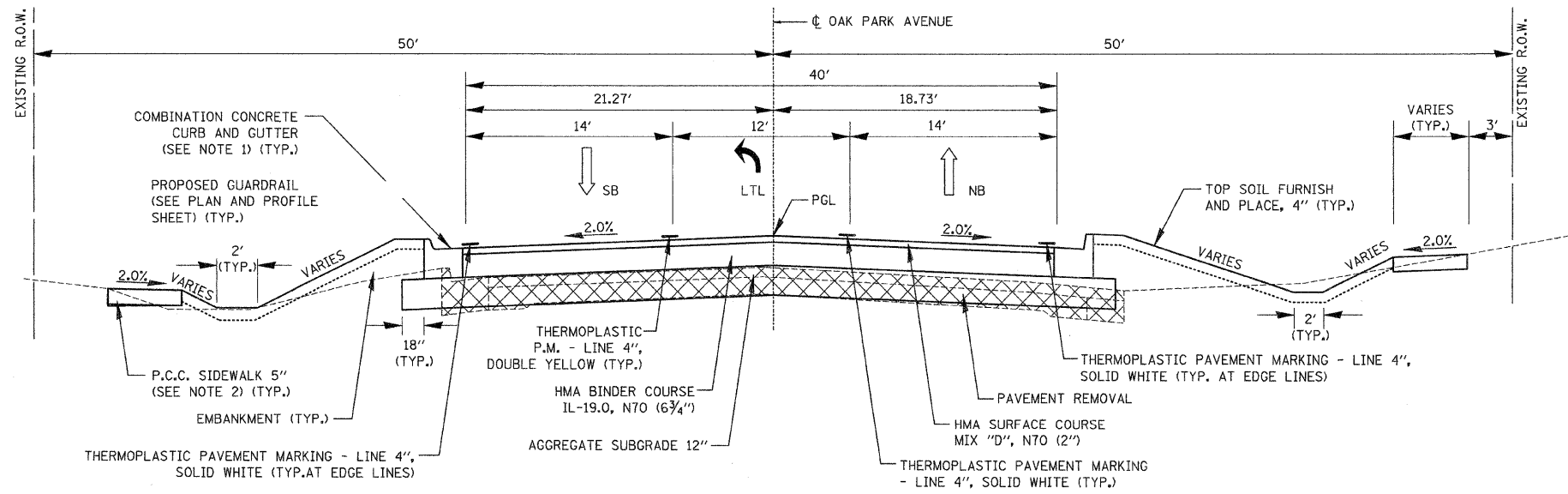
Rev. 4-13-09

COLLINS ENGINEERS	QUANTITIES SHEET NO. 2 OF 3 SHEETS	F.A.U. RTE.	SECTION	COUNTY	TOTAL SHEETS	SHEET NO.
		2774	0306T	COOK	55	4
DESIGNED: LDB	CHECKED: JMH	SN: 016-2848		CONTRACT NO. 60C07		
DATE: 01/29/09	DRAWN: DR	FED. ROAD DIST. NO. - ILLINOIS FED. AID PROJECT				



PROPOSED TYPICAL SECTION AT CULVERT (LOOKING NORTH)

STA. 85+50.94 TO STA. 86+21.02
NEW STRUCTURE NO. 016-2848



PROPOSED TYPICAL SECTION (LOOKING NORTH)

STA. 87+00.00 TO STA. 91+55.94

- NOTE 1:
B6.12 COMBINATION CONCRETE CURB AND GUTTER:
STA. 90+94.06 LT TO STA. 91+34.06 LT
STA. 90+81.62 RT TO STA. 91+41.62 RT
- B6.24 COMBINATION CONCRETE CURB AND GUTTER:
STA. 87+00.00 LT TO STA. 90+94.06 LT
STA. 87+00.00 RT TO STA. 90+81.62 RT
- NOTE 2:
PCC SIDEWALK 5" (5' WIDE):
STA. 87+45.00 LT TO STA. 91+31.91 LT
STA. 87+00.00 RT TO STA. 91+40.04 RT
- PCC SIDEWALK 5" (5' TO 8' TRANSITION):
STA. 87+00.00 LT TO STA. 87+45.00 LT

FILE NAME = ...ND168C07-shr-typical_R1.dgn	USER NAME = Plotted by Administrator	DESIGNED - ST	REVISED - 4/10/2009	STATE OF ILLINOIS DEPARTMENT OF TRANSPORTATION	TYPICAL SECTIONS OAK PARK AVENUE OVER UNION DRAINAGE DITCH			F.A.U. RTE. 2774	SECTION 0306T	COUNTY COOK	TOTAL SHEETS 55	SHEET NO. 8
PLOT SCALE = 5/3200" = 1/4" IN.	CHECKED - FL	DRAWN - ST	REVISED -		SCALE: N.T.S.	SHEET NO. OF SHEETS	STA. 87+00.00 TO STA. 92+72.60	FED. ROAD DIST. NO.	ILLINOIS FED. AID PROJECT	CONTRACT NO. 60C07		
PLOT DATE = 4/13/2009	DATE - 10/2008	CHECKED - FL	REVISED -									

PRECAST REINFORCED CONCRETE
FLARED END SECTIONS, 60"

LOCATION		QUANTITY
STATION	OFFSET	(EACH)
86+30.10	54.4' RT	1
TOTAL		1

CONCRETE HEADWALL
FOR PIPE DRAINS

LOCATION		QUANTITY
		(EACH)
*JOBSITE		2
TOTAL		2

PIPE UNDERDRAINS 4"

LOCATION		QUANTITY
		(FOOT)
*JOBSITE		200
TOTAL		200

CATCH BASINS, TYPE A, 4' DIAMETER,
TYPE 24 FRAME AND GRATE

LOCATION		QUANTITY
STATION	OFFSET	(EACH)
83+54.00	22.5' LT	1
87+50.00	20.0' RT	1
89+25.00	22.6' LT	1
89+25.00	20.0' RT	1
90+83.70	21.3' LT	1
90+83.70	18.7' RT	1
TOTAL		6

GUTTER OUTLET

LOCATION		QUANTITY
		(EACH)
82+82.82 TO 83+16.99 RT		1
TOTAL		1

TRAFFIC BARRIER TERMINAL, TYPE 2

LOCATION		QUANTITY
STATION	OFFSET	(EACH)
84+31.68 TO 84+46.21	LT	1
87+04.20 TO 87+18.90	LT	1
84+54.17 TO 84+68.31	RT	1
86+58.35 TO 86+72.32	RT	1
TOTAL		4

STORM SEWERS, CLASS A, TYPE 2, 12"

LOCATION		QUANTITY
STATION/OFFSET		(FOOT)
83+54.0; 22.5' LT TO 83+54.0; 32.5' LT		12.0
87+50.0; 20.0' RT TO 87+50.0; 22.6' LT		42.6
87+50.0; 35.5' LT TO 87+50.0; 22.6' LT		13.0
89+25.0; 39.0' LT TO 87+50.0; 22.6' LT		175.8
89+25.0; 22.6' LT TO 89+25.0; 39.0' LT		16.4
89+25.0; 20.0' RT TO 89+25.0; 22.6' LT		42.6
90+83.7; 21.3' LT TO 90+83.7; 18.7' RT		41.5
90+83.7; 18.7' RT TO 90+83.6; 27.7' RT		10.3
TOTAL		354.2

PIPE UNDERDRAINS 4" (SPECIAL)

LOCATION		QUANTITY
		(FOOT)
*JOBSITE		50
TOTAL		50

COMBINATION CONCRETE CURB
AND GUTTER, TYPE B-6.12

LOCATION		QUANTITY
STATION	OFFSET	(FOOT)
82+59.93 TO 82+98.48	LT	52.0
83+21.74 TO 83+71.75	RT	100.2
84+22.24 TO 85+00.00	RT	141.7
90+81.62 TO 91+41.62	RT	94.2
90+94.06 TO 91+34.06	LT	79.0
TOTAL		467.1

GUARDRAIL REMOVAL

LOCATION		QUANTITY
STATION	OFFSET	(FOOT)
84+09.68 TO 86+23.85	LT	214.2
85+06.10 TO 86+83.26	RT	177.3
TOTAL		391.5

STORM SEWERS, CLASS A, TYPE 2, 15"

LOCATION		QUANTITY
STATION/OFFSET		(FOOT)
87+50.00; 22.6' LT TO 87+00.00; 47.0 LT		56.0
TOTAL		56.0

STORM SEWERS, CLASS A, TYPE 2, 60"

LOCATION		QUANTITY
STATION/OFFSET		(FOOT)
86+73.00; 29.8' RT TO 86+30.10; 54.4' RT		49.4
TOTAL		49.4

PIPE UNDERDRAINS,
FABRIC LINED TRENCH 4"

LOCATION		QUANTITY
		(FOOT)
*JOBSITE		250
TOTAL		250

CATCH BASINS, TYPE A,
4'-DIAMETER, TYPE 8 GRATE

LOCATION		QUANTITY
STATION	OFFSET	(EACH)
87+00.00	32.7' RT	1
87+50.00	35.5' LT	1
TOTAL		2

COMBINATION CONCRETE CURB
AND GUTTER, TYPE B-6.24

LOCATION		QUANTITY
STATION	OFFSET	(FOOT)
82+98.48 TO 90+94.06	LT	795.5
85+00.00 TO 90+81.62	RT	567.1
TOTAL		1362.6

STEEL PLATE BEAM GUARD RAIL
(SHORT RADIUS)

LOCATION		QUANTITY
STATION	OFFSET	(FOOT)
84+46.21 TO 84+51.96	LT	5.8
86+95.71 TO 87+04.20	LT	8.5
84+68.31 TO 85+12.30	RT	44.0
86+31.05 TO 86+45.85	RT	14.8
TOTAL		73.1

STORM SEWER REMOVAL, 18"

LOCATION		QUANTITY
STATION/OFFSET		(FOOT)
84+46.20; 31.6' LT TO 85+47.70; 27.9' LT		101.8
TOTAL		101.8

STORM SEWER REMOVAL, 60"

LOCATION		QUANTITY
STATION/OFFSET		(FOOT)
86+15.10; 30.3' RT TO 86+77.00; 29.7' RT		58
TOTAL		58

REMOVING MANHOLES

LOCATION		QUANTITY
STATION	OFFSET	(EACH)
83+62.93	50.5' RT	1
84+32.84	51.5' RT	1
90+83.59	27.7' RT	1
TOTAL		3

TRAFFIC BARRIER TERMINAL,
TYPE 5A

LOCATION		QUANTITY
STATION	OFFSET	(EACH)
85+39.46 TO 85+52.71	LT	1
85+82.46 TO 85+95.71	LT	1
85+74.80 TO 85+88.05	RT	1
86+17.80 TO 86+31.05	RT	1
TOTAL		4

STEEL PLATE BEAM GUARD RAIL, TYPE A

LOCATION		QUANTITY
STATION	OFFSET	(FOOT)
84+51.96 TO 85+39.46	LT	87.5
85+95.71 TO 86+95.71	LT	100.0
85+12.30 TO 85+74.80	RT	62.5
86+45.85 TO 86+58.35	RT	12.5
TOTAL		262.5

DELINEATORS

LOCATION		QUANTITY
		(EACH)
S.N. 016-2848		
NORTHWEST CORNER	LT	1
NORTHEAST CORNER	RT	1
SOUTHWEST CORNER	LT	1
SOUTHEAST CORNER	RT	1
TOTAL		4

MANHOLES, TYPE A, 5' DIA.,
TYPE 1 FRAME, OPEN LID

LOCATION		QUANTITY
STATION	OFFSET	(EACH)
83+62.93	50.5' RT	1
TOTAL		1

MANHOLES, TYPE A, 7' DIA.,
TYPE 1 FRAME, OPEN LID

LOCATION		QUANTITY
STATION	OFFSET	(EACH)
84+32.84	51.5' RT	1
87+50.00	22.6' LT	1
TOTAL		2

MANHOLES, TYPE A, 7' DIA.,
TYPE 1 FRAME, CLOSED LID

LOCATION		QUANTITY
STATION	OFFSET	(EACH)
89+25.00	39.0' LT	1
TOTAL		1

MANHOLES, SPECIAL

LOCATION		QUANTITY
STATION	OFFSET	(EACH)
86+73.00	29.8' RT	1
90+86.30	27.7' RT	1
TOTAL		2

STEEL PLATE BEAM GUARD RAIL
ATTACHED TO STRUCTURES

LOCATION		QUANTITY
STATION	OFFSET	(FOOT)
85+52.21 TO 86+02.21	LT	50.0
85+86.46 TO 86+23.96	RT	37.5
TOTAL		87.5

PERMANENT SURVEY MARKERS, TYPE 1

LOCATION		QUANTITY
		(EACH)
JOBSITE		1
TOTAL		1

*ESTIMATED QUANTITY

FILE NAME = ... \D160CB7-sht-schedules_Rt.dgn	USER NAME = Plotted by Administrator	DESIGNED - OWR	REVISED Δ - 4/10/2009	STATE OF ILLINOIS DEPARTMENT OF TRANSPORTATION	SCHEDULE OF QUANTITIES OAK PARK AVENUE OVER UNION DRAINAGE DITCH	F.A. RTE. 2774	SECTION 0306T	COUNTY COOK	TOTAL SHEETS 55	SHEET NO. 12	
PLOT SCALE = 50.00' / IN.	CHECKED - FML	REVISOR -	SCALE: NONE			SHEET NO. OF SHEETS	STA. TO STA.	FED. ROAD DIST. NO.	ILLINOIS FED. AID PROJECT	CONTRACT NO. 60C07	
PLOT DATE = 4/13/2009	DATE - 10/2008	REVISOR -									

PROPOSED STEEL PLATE BEAM GUARDRAIL:
 STA. 84+52.21 TO STA. 85+52.21, LT STA. 84+51.96 TO STA. 85+39.46, LT
 STA. 86+02.21 TO STA. 86+89.71, LT STA. 85+95.71 TO STA. 86+95.71, LT
 STA. 85+11.46 TO STA. 86+86.46, RT STA. 85+12.30 TO STA. 86+74.80, RT
 STA. 86+47.17 TO STA. 86+58.35, RT STA. 86+45.85 TO STA. 86+58.35, RT

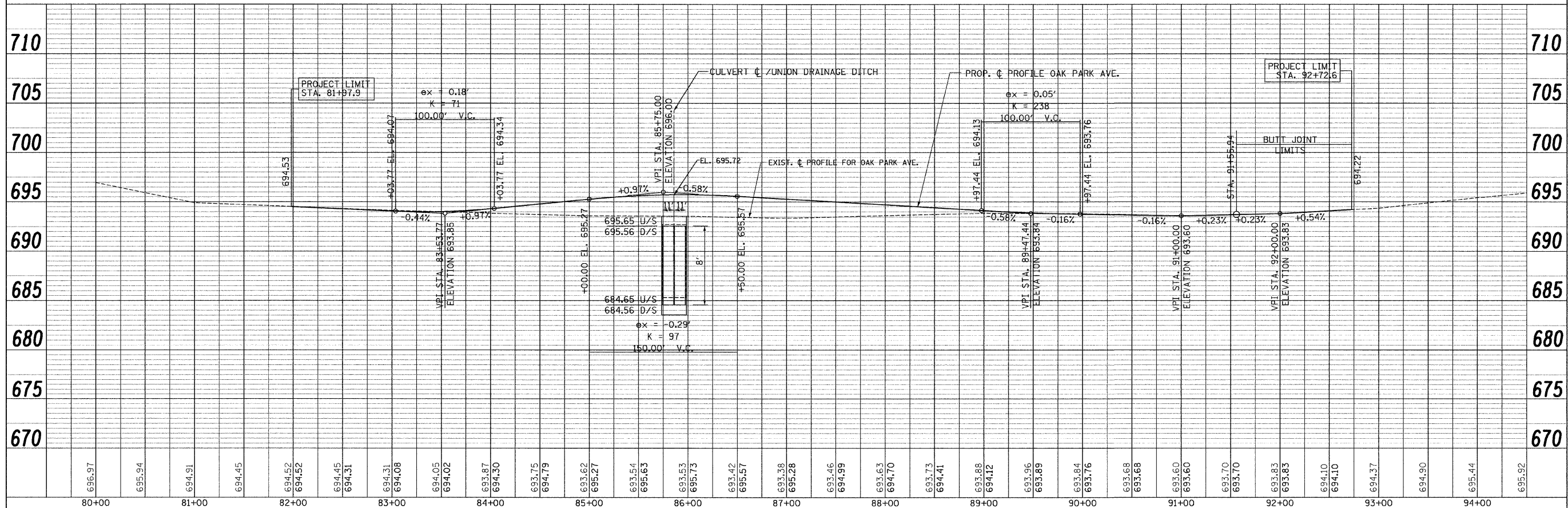
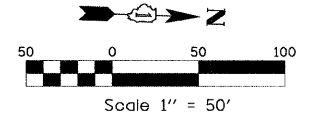
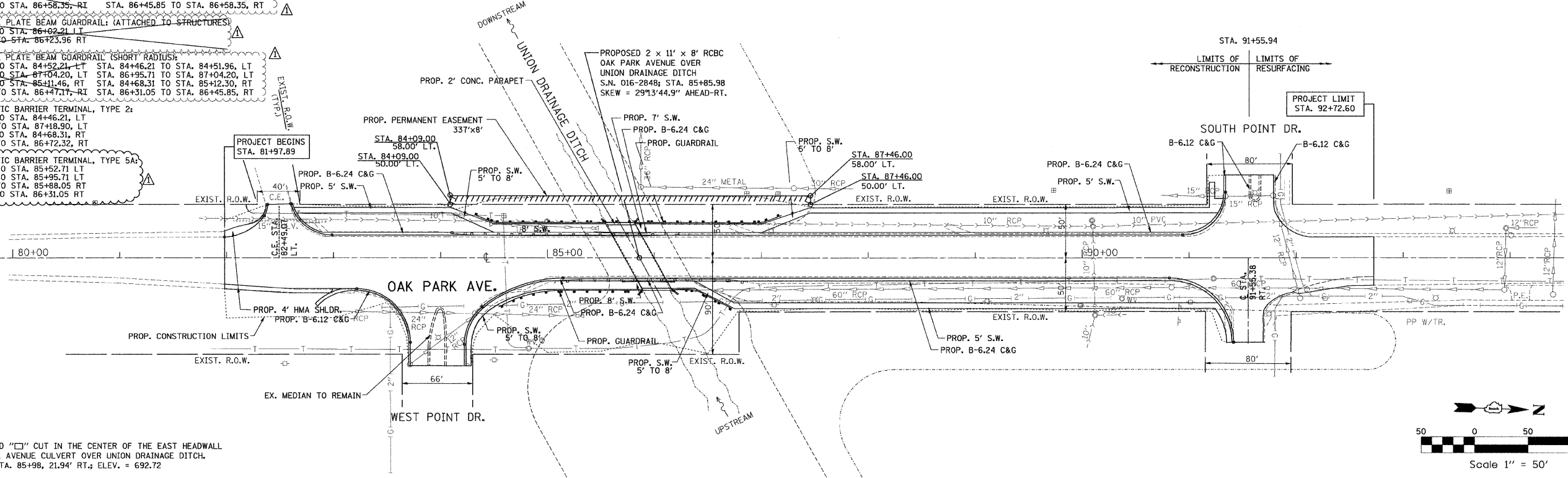
PROPOSED STEEL PLATE BEAM GUARDRAIL (ATTACHED TO STRUCTURES)
 STA. 85+52.21 TO STA. 86+02.21 LT
 STA. 85+86.46 TO STA. 86+23.96 RT

PROPOSED STEEL PLATE BEAM GUARDRAIL (SHORT RADIUS)
 STA. 84+46.21 TO STA. 84+52.21, LT STA. 84+46.21 TO STA. 84+51.96, LT
 STA. 86+89.71 TO STA. 87+04.20, LT STA. 86+95.71 TO STA. 87+04.20, LT
 STA. 84+68.31 TO STA. 85+11.46, RT STA. 84+68.31 TO STA. 85+12.30, RT
 STA. 86+23.96 TO STA. 86+47.17, RT STA. 86+31.05 TO STA. 86+45.85, RT

PROPOSED TRAFFIC BARRIER TERMINAL, TYPE 2:
 STA. 84+31.68 TO STA. 84+46.21, LT
 STA. 87+04.20 TO STA. 87+18.90, LT
 STA. 84+54.17 TO STA. 84+68.31, RT
 STA. 86+58.35 TO STA. 86+72.32, RT

PROPOSED TRAFFIC BARRIER TERMINAL, TYPE 5A:
 STA. 85+39.46 TO STA. 85+52.71 LT
 STA. 85+82.46 TO STA. 85+95.71 LT
 STA. 85+74.80 TO STA. 85+88.05 RT
 STA. 86+17.80 TO STA. 86+31.05 RT

BENCHMARK: FOUND "□" CUT IN THE CENTER OF THE EAST HEADWALL OF THE OAK PARK AVENUE CULVERT OVER UNION DRAINAGE DITCH. (S.N. 016-1019); STA. 85+98, 21.94' RT.; ELEV. = 692.72



PLAN	DATE
BY	
REVISIONS	
NO.	

PROFILE	DATE
BY	
REVISIONS	
NO.	

FILE NAME =	USER NAME = Plotted by Administrator	DESIGNED - ST	REVISED - 03/05/2009	STATE OF ILLINOIS DEPARTMENT OF TRANSPORTATION	PROPOSED PLAN & PROFILE SHEET OAK PARK AVENUE OVER UNION DRAINAGE DITCH	F.A.U. RTE.	SECTION	COUNTY	TOTAL SHEETS	SHEET NO.		
...\\D168C07-sh1-pl\proj\Prop1.R1.dgn	PLOT SCALE = 50.000' / IN.	DRAWN - ST	REVISED - 04/10/2009			2774	0306T	COOK	55	18		
PLOT DATE = 4/13/2009	DATE - 10/2008	CHECKED - FL	REVISED -			SCL: H1'=50', V1'=5'		SHEET NO. OF SHEET		STA. 81+97.90 TO STA. 92+72.60	FED. ROAD DIST. NO.	ILLINOIS FED. AID PROJECT
		DATE - 10/2008	REVISED -									

STATE OF ILLINOIS
DEPARTMENT OF TRANSPORTATION

GENERAL NOTES:

Reinforcement bars shall conform to the requirements of ASTM A 706 Gr 60. See Special Provisions.

All reinforcement bars shall be epoxy coated.

Layout of the slope protection system may be varied to suit ground conditions in the field as directed by the Engineer.

The Contractor shall make his own investigation to determine the existence, nature, and exact location of all utility lines and appurtenances within the limits of the rehabilitation. The cost of this work will be considered incidental to the contract.

Pay item and details for the Steel Plate Beam Guardrail is included in the Roadway Plans.

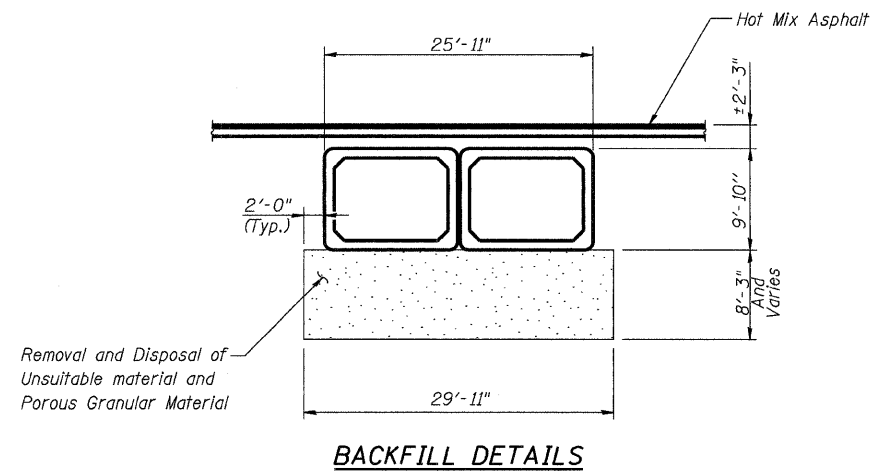
The Precast Concrete Box Culvert shall conform to all AASHTO M273 requirements.

INDEX OF STRUCTURAL DRAWINGS

- S1 General Plan
- S2 General Notes and Bill of Materials
- S3 Box Culvert Layout
- S4 Omitted (Sheet 29 of 55)
- S5 West End Section Details I
- S6 West End Section Details II
- S7 East End Section Details I
- S8 East End Section Details II
- S9 Box Culvert End Section Details
- S10 Steel Railing, Type TP-1
- S11 Boring Logs C-1 and C-2

TOTAL BILL OF MATERIAL

ITEM	UNIT	TOTAL
Removal of Existing Structures	Each	1
Steel Railing, Type TP-1	Foot	72.7
Name Plates	Each	2
Precast Concrete Box Culvert 11' X 8'	Foot	105
Box Culvert End Sections	Each	2
Stone Riprap, Class A4	Sq. Yd.	121
Filter Fabric	Sq. Yd.	168
Removal and Disposal of Unsuitable Material	Cu. Yd.	744



BACKFILL NOTES:

Place porous granular material underneath the box culverts to the limits shown on the plans or as directed by the Engineer. The cost for this work shall be included in the cost for the pay item "Precast Concrete Box Culvert 11' X 8'". See Section 540 of the Standard Specifications. Removal and Disposal of Unsuitable Material shall be measured for payment in its original position and the volume computed in cubic yards. Horizontal dimensions will not extend beyond vertical planes 2 feet outside the edges of the culvert.

STATION 85+85.98
BUILT BY
STATE OF ILLINOIS
FAU 2774 SEC. 0306T
LOADING HS20-44
STRUCTURE NO. 016-2848

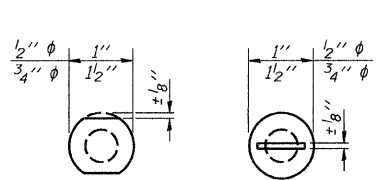
NAME PLATE
See Std. 515001

**GENERAL NOTES AND
BILL OF MATERIALS**

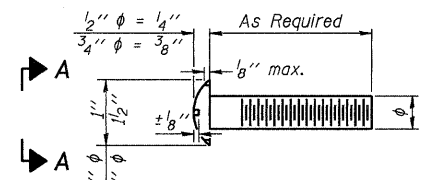
4-13-09

COLLINS ENGINEERS	DESIGNED: LDB	CHECKED: JMH	SHEET NO. S2 OF S11 SHEETS	F.A.U. RTE. 2774	SECTION 0306T	COUNTY COOK	TOTAL SHEETS 55	SHEET NO. 27
	DATE: 3/27/09	DRAWN: DR		SN: 016-2848	CONTRACT NO. 60C07		FED. ROAD DIST. NO. _ ILLINOIS FED. AID PROJECT	

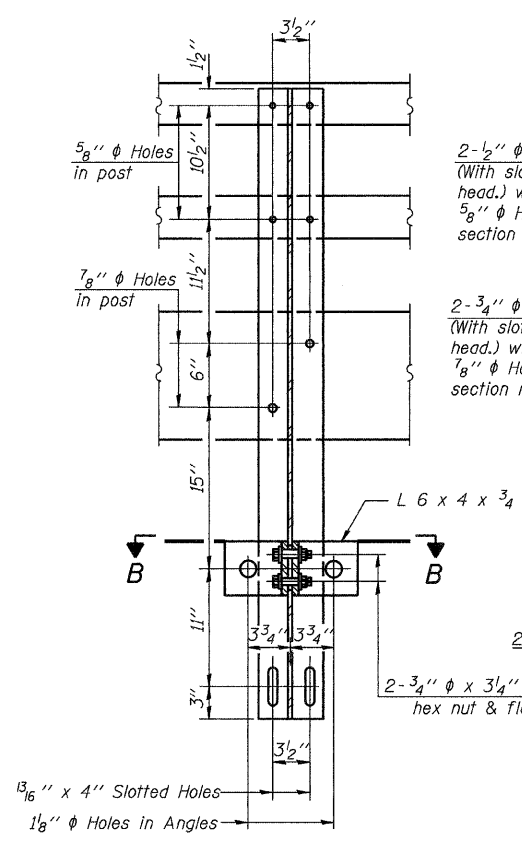
STATE OF ILLINOIS
DEPARTMENT OF TRANSPORTATION



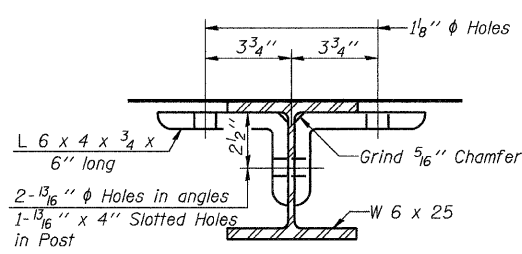
VIEW A-A



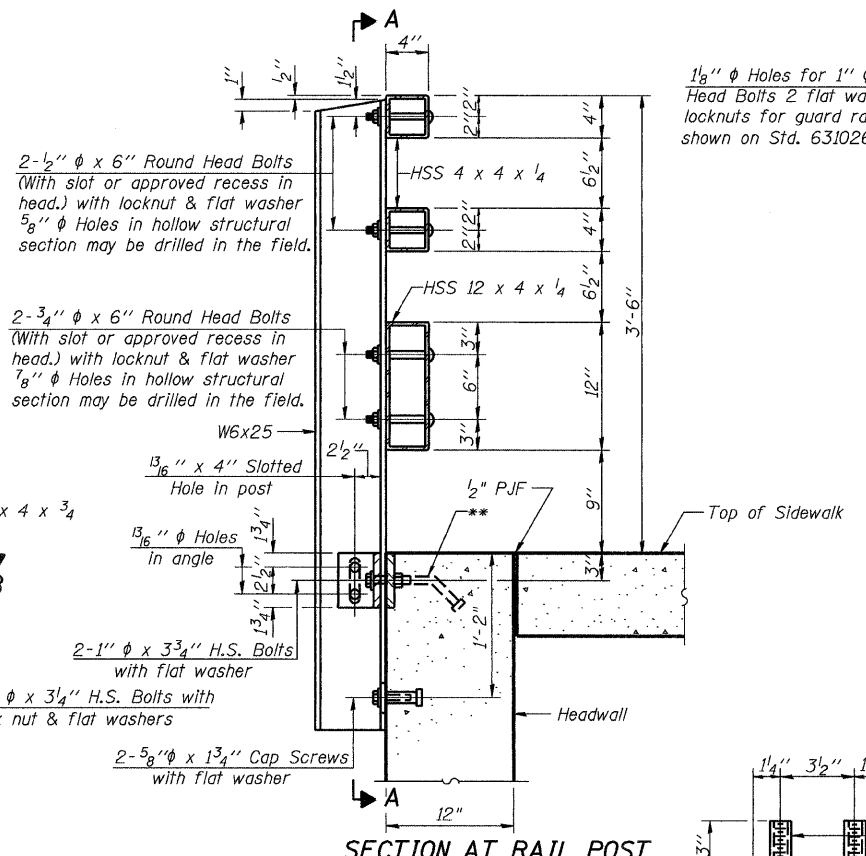
DETAIL OF 1/2" ϕ & 3/4" ϕ ROUND HEAD BOLTS



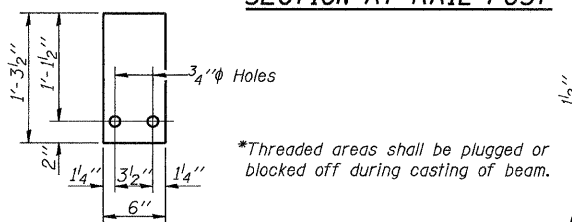
SECTION A-A



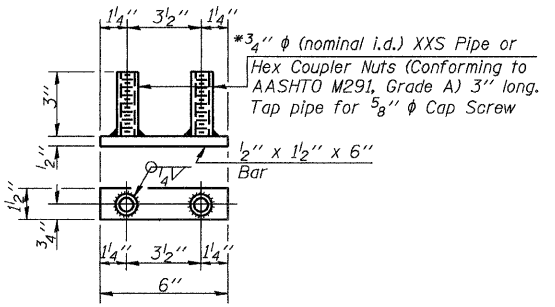
SECTION B-B



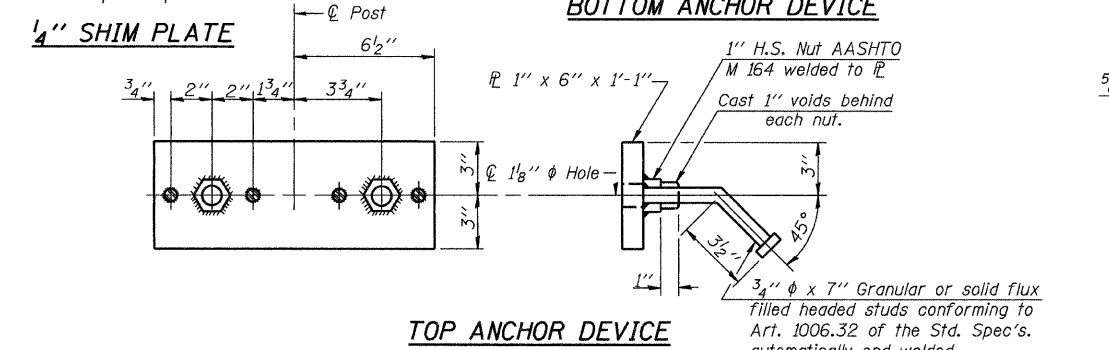
SECTION AT RAIL POST



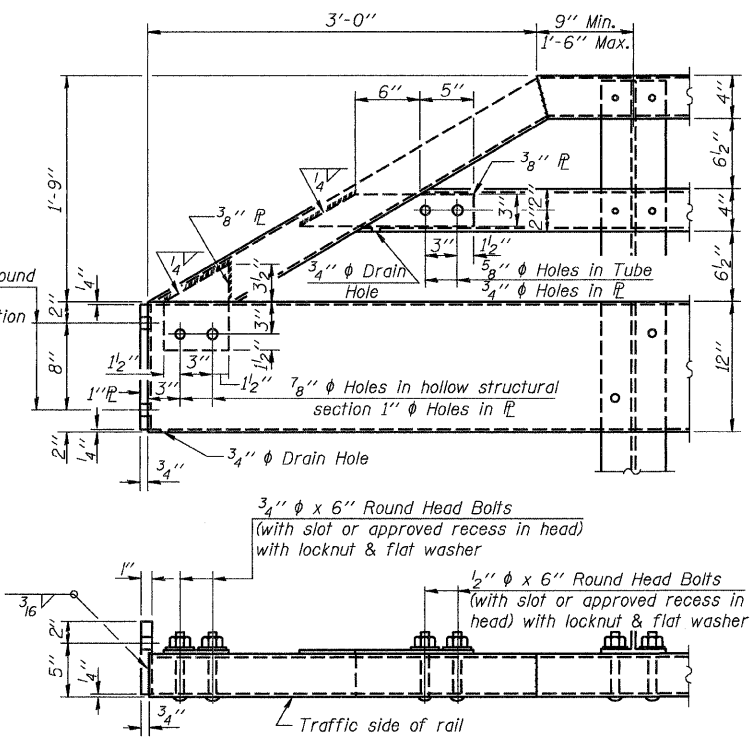
1/4" SHIM PLATE



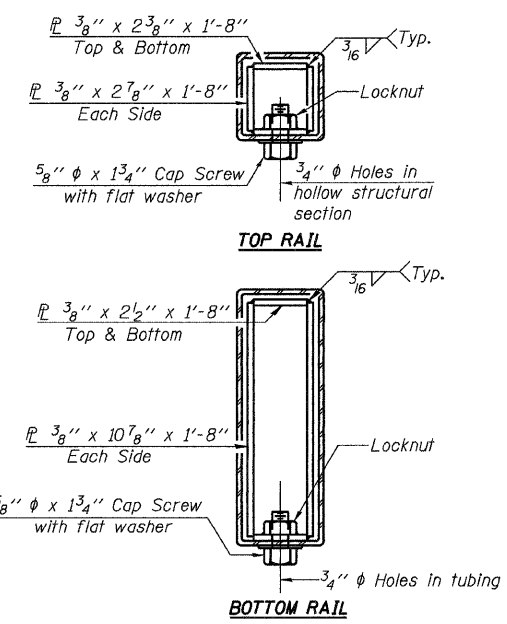
BOTTOM ANCHOR DEVICE



TOP ANCHOR DEVICE

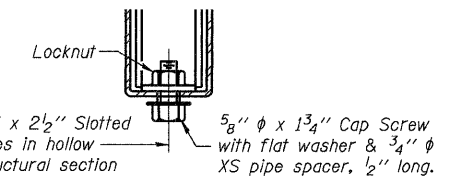


END OF RAIL DETAILS

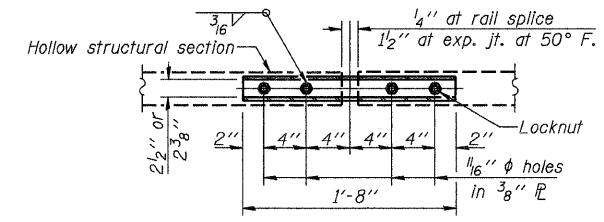


SECTIONS AT RAIL SPLICE

All field drilled holes shall be coated with an approved zinc rich paint before erection.
For multi-span bridges, sufficient 1/4" x 6" x 1'-3 1/2" galvanized steel shims shall be provided to align rail between adjacent spans. Cost included with Steel Railing, Type TP-1.
All steel rail elements shall be galvanized according to Article 509.05 of the Standard Specifications.
**The studs of the anchor devices shall be placed below the top reinforcement bars and the outermost longitudinal reinforcement bar shall be placed directly above the studs of the rail post anchor device.



RAIL SPLICE CONNECTION AT EXPANSION JT.



PLAN-BOTTOM. SPLICE P. TYPICAL

BILL OF MATERIAL

Item	Unit	Quantity
Steel Railing, Type TP-1	Foot	(72.7)

STEEL RAILING, TYPE TP-1

COLLINS ENGINEERS DESIGNED: LDB DATE: 3/27/09	SHEET NO. S10 OF S11 SHEETS CHECKED: JMH DRAWN: DR	F.A.U. RTE.	SECTION	COUNTY	TOTAL SHEETS	SHEET NO.
		2774	0306T	COOK	55	35
SN: 016-2848			CONTRACT NO. 60C07			
FED. ROAD DIST. NO. - ILLINOIS FED. AID PROJECT						

(10'-6" Maximum Post Spacing)