

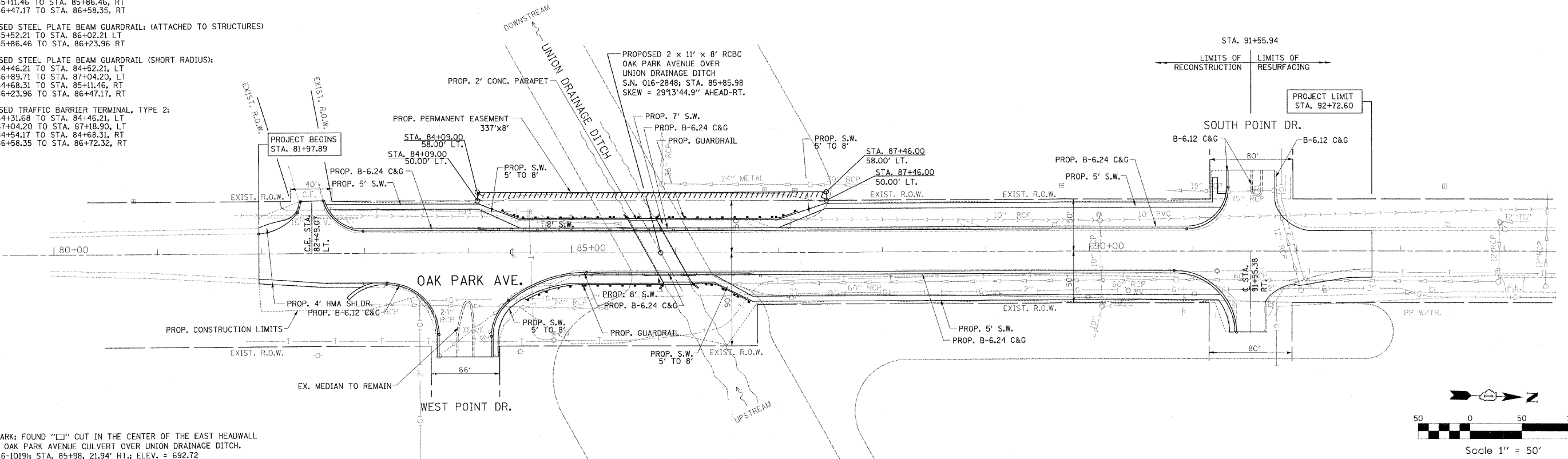
PROPOSED STEEL PLATE BEAM GUARDRAIL:  
 STA. 84+52.21 TO STA. 85+52.21, LT  
 STA. 86+02.21 TO STA. 86+89.71, LT  
 STA. 85+11.46 TO STA. 85+86.46, RT  
 STA. 86+47.17 TO STA. 86+58.35, RT

PROPOSED STEEL PLATE BEAM GUARDRAIL (ATTACHED TO STRUCTURES)  
 STA. 85+52.21 TO STA. 86+02.21 LT  
 STA. 85+86.46 TO STA. 86+23.96 RT

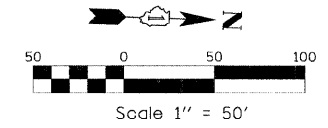
PROPOSED STEEL PLATE BEAM GUARDRAIL (SHORT RADIUS):  
 STA. 84+46.21 TO STA. 84+52.21, LT  
 STA. 86+89.71 TO STA. 87+04.20, LT  
 STA. 84+68.31 TO STA. 85+11.46, RT  
 STA. 86+23.96 TO STA. 86+47.17, RT

PROPOSED TRAFFIC BARRIER TERMINAL, TYPE 2:  
 STA. 84+31.68 TO STA. 84+46.21, LT  
 STA. 87+04.20 TO STA. 87+18.90, LT  
 STA. 84+54.17 TO STA. 84+68.31, RT  
 STA. 86+58.35 TO STA. 86+72.32, RT

PROPOSED 2 x 11' x 8' RCBC  
 OAK PARK AVENUE OVER  
 UNION DRAINAGE DITCH  
 S.N. 016-2848; STA. 85+85.98  
 SKEW = 29°13'44.9" AHEAD-RT.

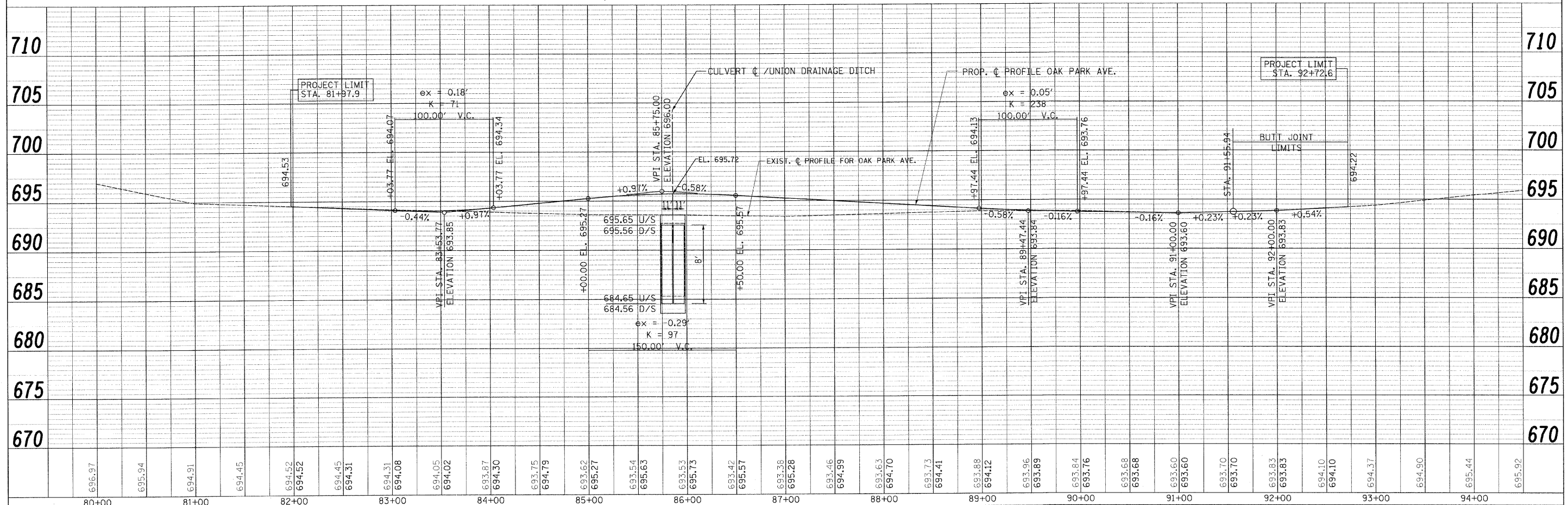


BENCHMARK: FOUND "□" CUT IN THE CENTER OF THE EAST HEADWALL  
 OF THE OAK PARK AVENUE CULVERT OVER UNION DRAINAGE DITCH.  
 (S.N. 016-1019); STA. 85+98, 21.94' RT.; ELEV. = 692.72



PLAN	SURVEYED	DATE
	PLOTTED	BY
	CHECKED	
	REVISIONS	
	FILE NAME	
	NO.	

PROFILE	SURVEYED	DATE
	PLOTTED	BY
	CHECKED	
	REVISIONS	
	FILE NAME	
	NO.	



FILE NAME =	USER NAME = Plotted by Administrator	DESIGNED - ST	REVISED - 03/05/2009	<b>STATE OF ILLINOIS DEPARTMENT OF TRANSPORTATION</b>	<b>PROPOSED PLAN &amp; PROFILE SHEET OAK PARK AVENUE OVER UNION DRAINAGE DITCH</b>		F.A.U. RTE.	SECTION	COUNTY	TOTAL SHEETS	SHEET NO.	
... \D16207-sht-pnprof(Prop)_R1.dgn		DRAWN - ST	REVISED -		2774	0306T	COOK	55	18			
		CHECKED - FL	REVISED -		SCL: H1"=50', V1"=5'		SHEET NO. OF SHEET		STA. 81+97.90 TO STA. 92+72.60		CONTRACT NO. 60C07	
		DATE - 10/2008	REVISED -		FED. ROAD DIST. NO.		ILLINOIS FED. AID PROJECT		CONTRACT NO. 60C07		CONTRACT NO. 60C07	
					SHEET NO. OF SHEET		STA. 81+97.90 TO STA. 92+72.60		CONTRACT NO. 60C07		CONTRACT NO. 60C07	