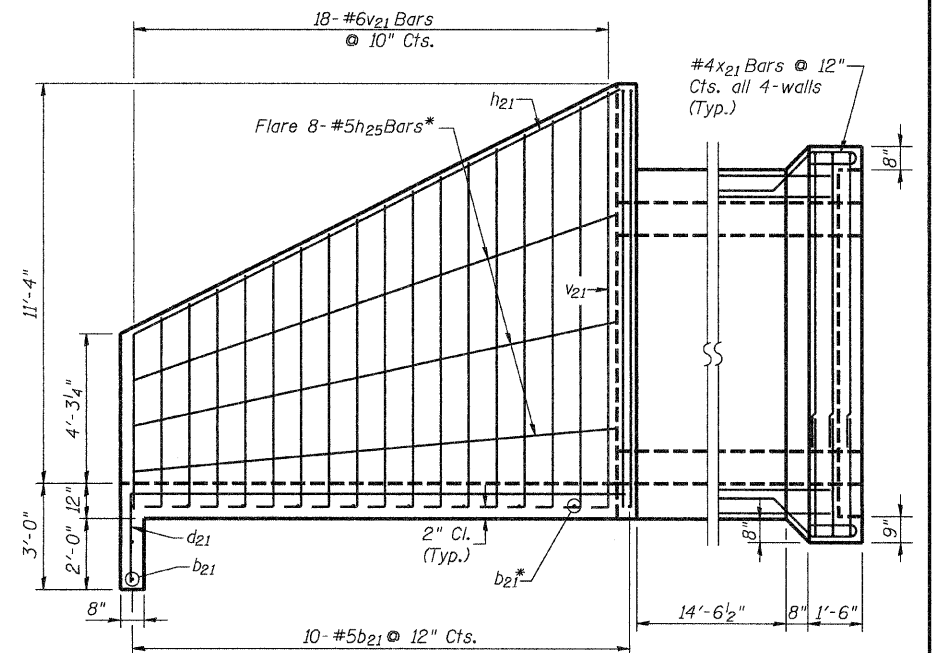
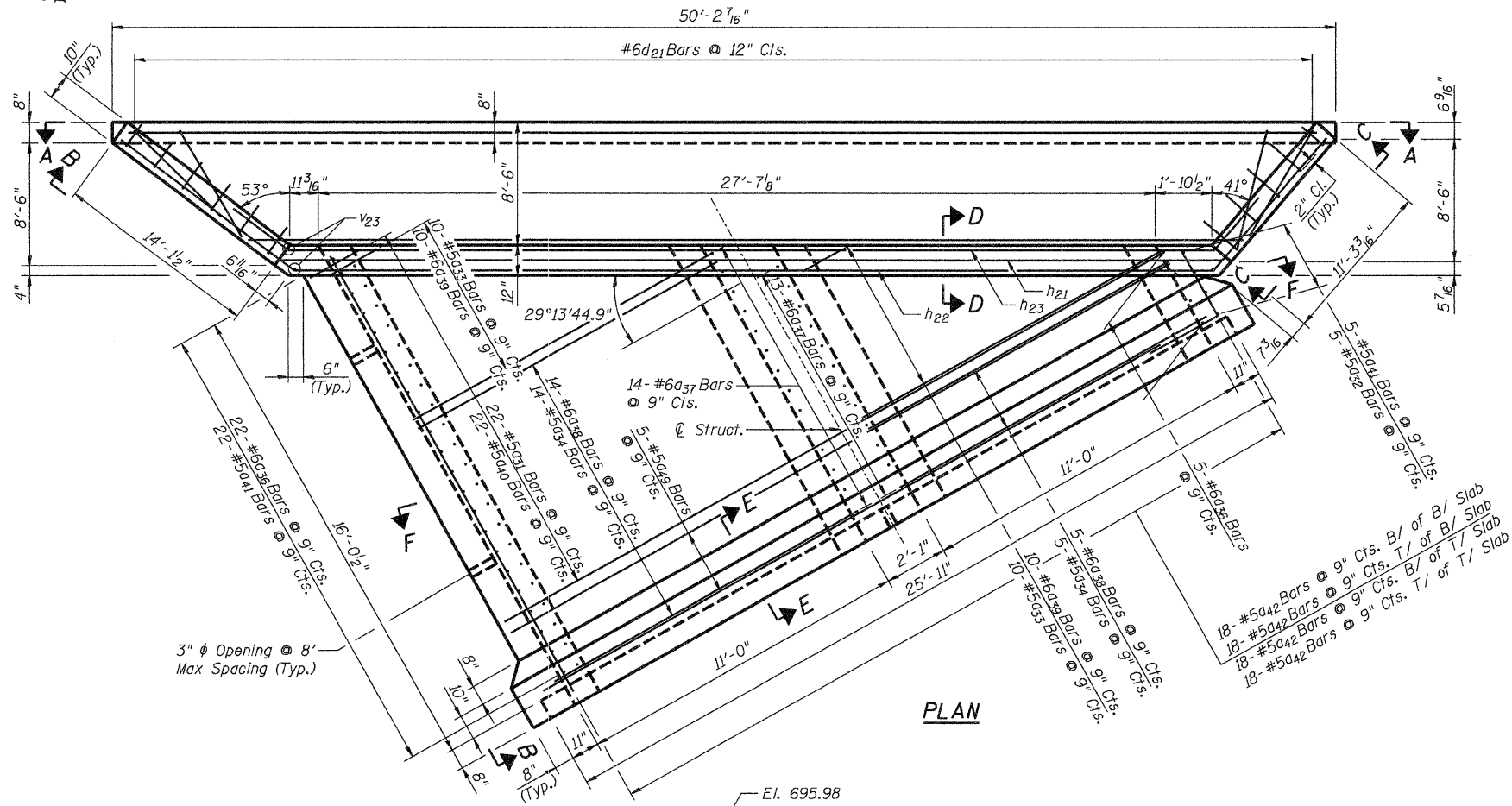
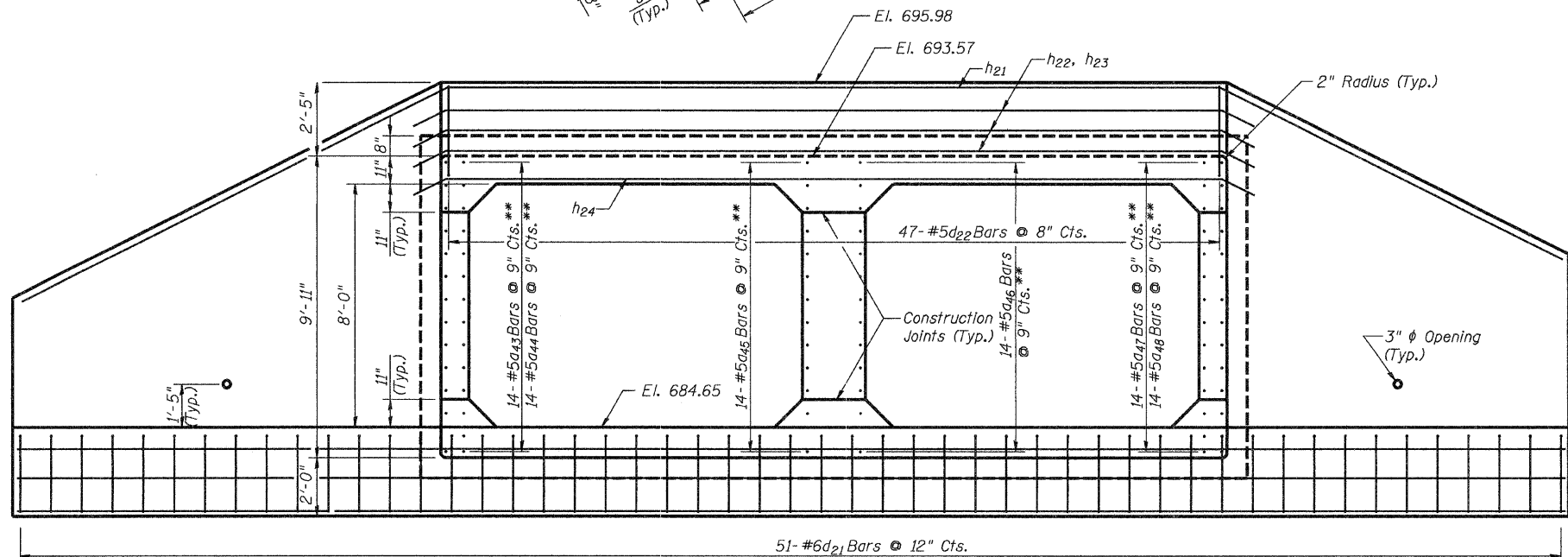


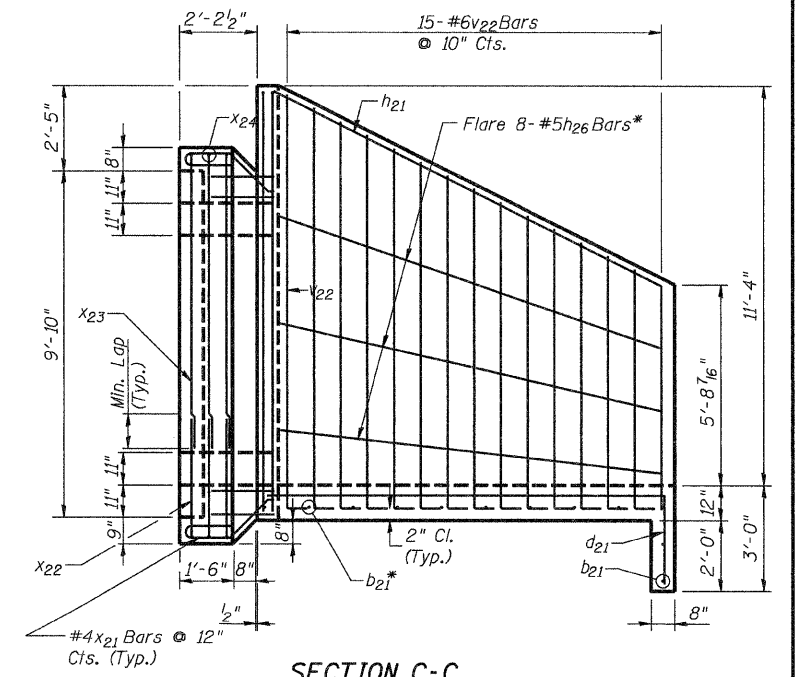
STATE OF ILLINOIS
DEPARTMENT OF TRANSPORTATION



SECTION B-B



SECTION A-A



SECTION C-C
EAST END SECTION
DETAILS I

Notes:
For Box Culvert Layout see sheet S3 of S11.
For Sections D-D and E-E see sheet S8 of S11.
For Section F-F see sheet S9 of S11.
For Steel Rolling Details see sheet S10 of S11.

MINIMUM BAR LAPS

- #4 Bar = 1'-8"
- #5 Bar = 2'-2"
- #6 Bar = 2'-7"

BILL OF MATERIAL

ITEM	UNIT	TOTAL
Box Culvert End Sections	Each	1

* Cut-to-Fit

** Vertical Reinforcement not shown for clarity.

COLLINS ENGINEERS

DESIGNED: LDB
DATE: 3/27/09

CHECKED: JMH
DRAWN: DR

SHEET NO. S7
OF
S11 SHEETS

F.A.U. RTE.	SECTION	COUNTY	TOTAL SHEETS	SHEET NO.
2774	0306T	COOK	55	32
SN: 016-2848		CONTRACT NO. 60C07		
FED. ROAD DIST. NO. _ ILLINOIS FED. AID PROJECT				