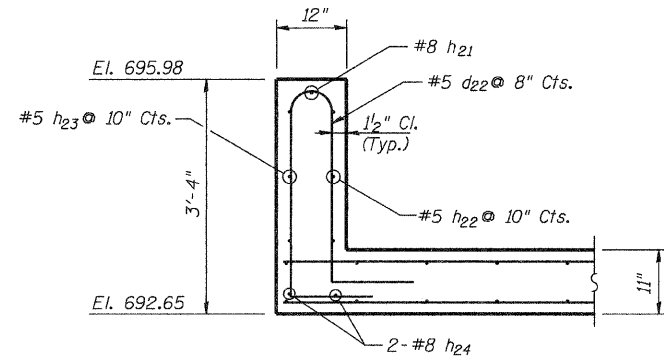
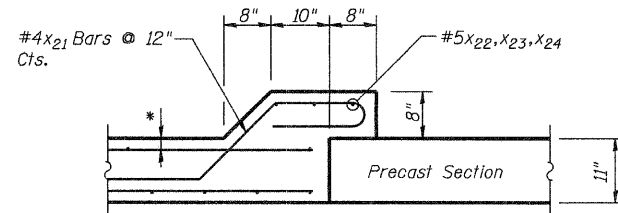


STATE OF ILLINOIS
DEPARTMENT OF TRANSPORTATION

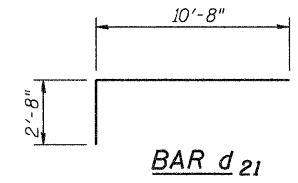


SECTION D-D

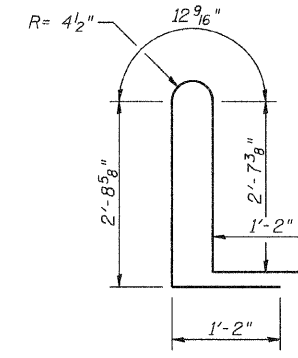


SECTION E-E

* 1/2" Cl. top & side walls,
and 2" Cl for Bottom slab.



BAR d 21

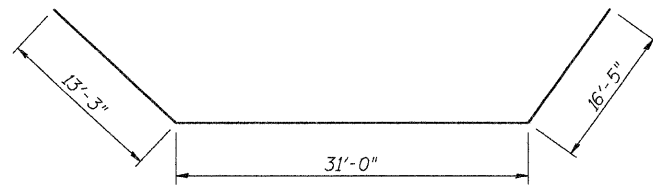


BAR d 22

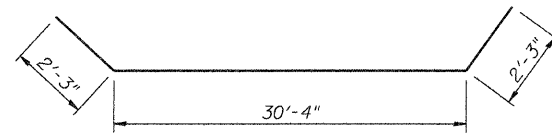
BILL OF MATERIAL**

Bar	No.	Size	Length	Shape
b21	12	5	49'-10"	—
d21	51	6	13'-4"	U
d22	47	5	8'-8 9/16"	U
h21	1	8	60'-8"	—
h22	3	5	34'-10"	—
h23	3	5	35'-0"	—
h24	2	8	30'-4"	—
h25	8	5	15'-5"	—
h26	8	5	12'-2"	—
v21	9	6	21'-5"	I
v22	8	6	22'-11"	I
v23	4	6	12'-0"	—
x21	72	4	5'-9 5/16"	—
x22	3	5	36'-9"	—
x23	6	5	10'-10"	—
x24	3	5	26'-1"	—

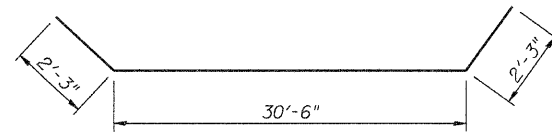
** For information use only. The items in this Table are not to be paid separately, but are to be included in the cost for the pay item "Box Culvert End Sections."



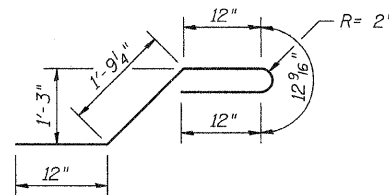
BAR h 21



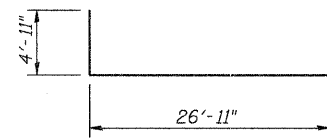
BAR h 22



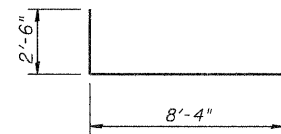
BAR h 23



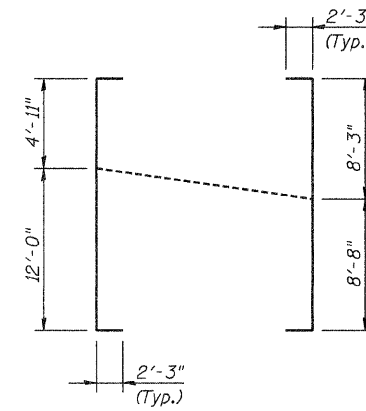
BAR x 21



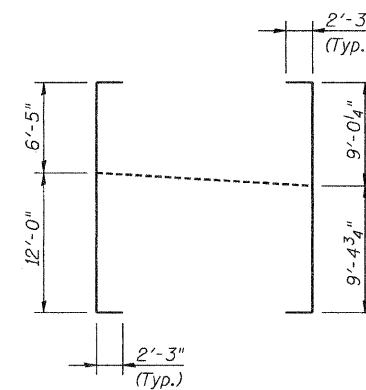
BAR x 22



BAR x 23



BAR v 21



BAR v 22

**EAST END SECTION
DETAILS II**

COLLINS ENGINEERS DESIGNED: LDB DATE: 3/27/09	CHECKED: JMH DRAWN: DR	SHEET NO. S8 OF S11 SHEETS	F.A.U. RTE. 2774	SECTION 0306T	COUNTY COOK	TOTAL SHEETS 55	SHEET NO. 33
		SN: 016-2848		CONTRACT NO. 60C07			
		FED. ROAD DIST. NO. - ILLINOIS FED. AID PROJECT					