

ROUTE MARKERS

FOR U.S. ROUTES
M1-40-2424

FOR ILLINOIS ROUTES
M1-50-2424

R.R. UNMARKED ROUTES
SPECIAL 24" x 18" VARIABLE
4" BLACK LETTERS ON WHITE
REFLECTIVE BACKGROUND

ARROWS SIGNS

M5-1L-2115

M5-1R-2115

M6-1L-2115

M6-1R-2115

M6-3-2115

CARDINAL DIRECTION & DETOUR SIGNS

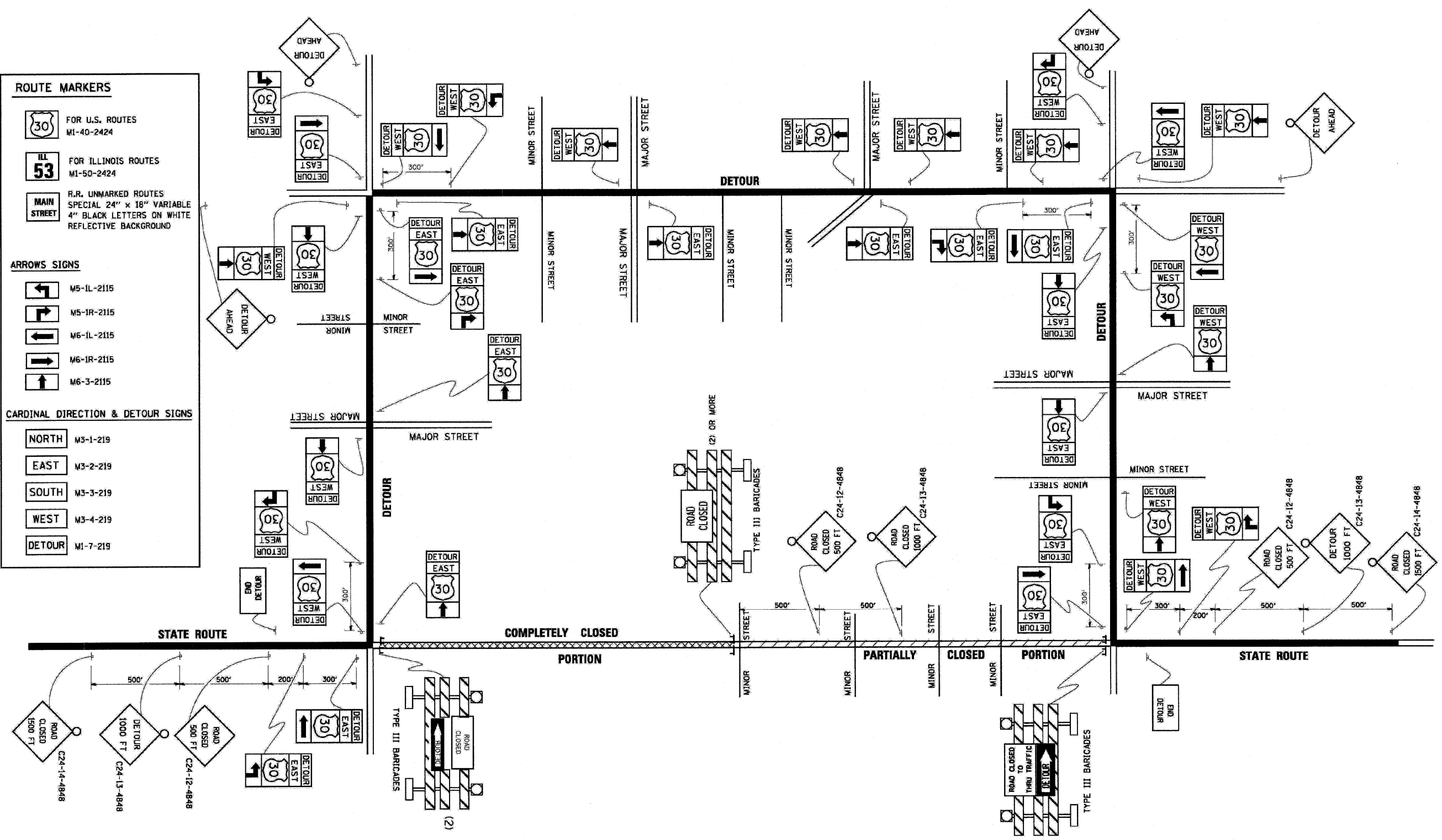
NORTH M3-1-219

EAST M3-2-219

SOUTH M3-3-219

WEST M3-4-219

DETOUR M1-7-219



TYPICAL MARKING FOR CLOSING STATE HIGHWAYS

| | | | | | | | | | | | | |
|-------------------------------------------|----------------------------|----------------|-----------|-----------------------------------------------------------|-------------------------------------------------------------------------|---------------------|--------------|---------------------|------------------|----------------|--------------------|-----------------|
| FILE NAME = ...N160C07-sht-details.dgn | USER NAME = Plotted by fln | DESIGNED - ST | REVISED - | STATE OF ILLINOIS DEPARTMENT OF TRANSPORTATION | DISTRICT STANDARDS OAK PARK AVENUE OVER UNION DRAINAGE DITCH | | | F.A.U. RTE. 2774 | SECTION 0306T | COUNTY COOK | TOTAL SHEETS 55 | SHEET NO. 47 |
| PLOT SCALE = 5/8" = 1' / IN. | | DRAWN - ST | REVISED - | | SCALE: N.T.S. | SHEET NO. OF SHEETS | STA. TO STA. | CONTRACT NO. 60C07 | | | | |
| PLOT DATE = 12/9/2008 | | CHECKED - FML | REVISED - | | FED. ROAD DIST. NO. ILLINOIS FED. AID PROJECT | | | | | | | |
| | | DATE - 10/2008 | REVISED - | | | | | | | | | |