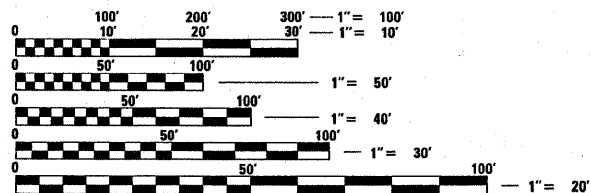
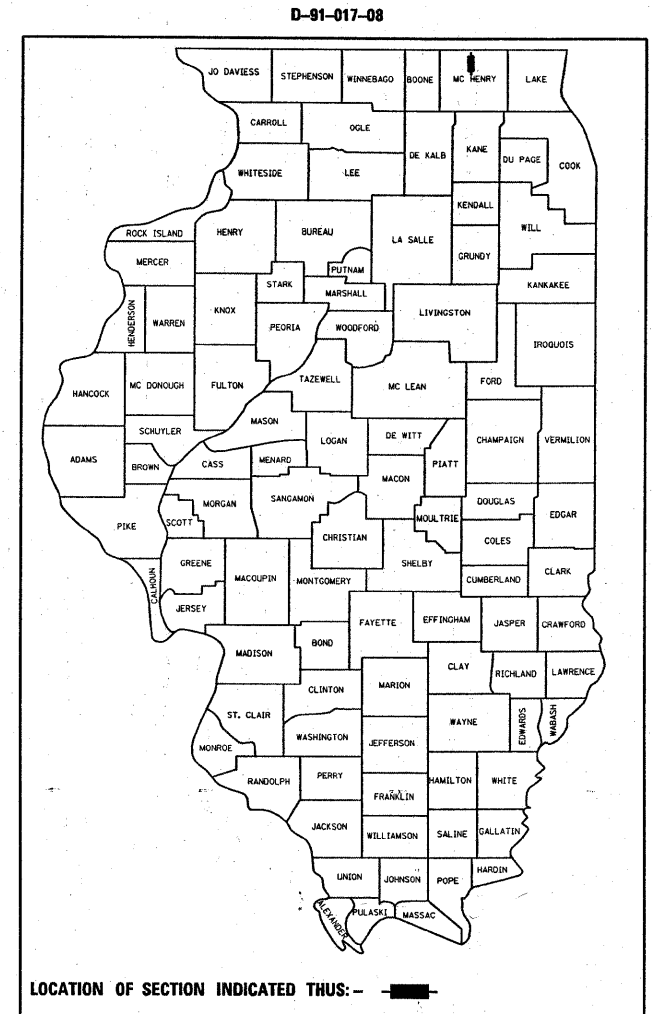


F.A.P. RTE.	SECTION	COUNTY	TOTAL SHEETS	SHEET NO.
334	111 RS-7	MC HENRY	20	1
FED. ROAD DIST. NO.	ILLINOIS	CONTRACT NO. 60D41		

STATE OF ILLINOIS
DEPARTMENT OF TRANSPORTATION
DIVISION OF HIGHWAYS
PROPOSED HIGHWAY PLANS
FAP ROUTE 334 : US 12 (MAIN ST)
WISCONSIN STATE LINE TO IL 173 (KENOSHA RD)
SECTION: 111 RS-7
RESURFACING (MAINTENANCE)
PROJECT: *ESP-0334(018)*
MC HENRY COUNTY
C-91-017-08

FOR INDEX OF SHEETS, SEE SHEET NO. 2

THE PROJECT IS LOCATED IN THE VILLAGE OF RICHMOND



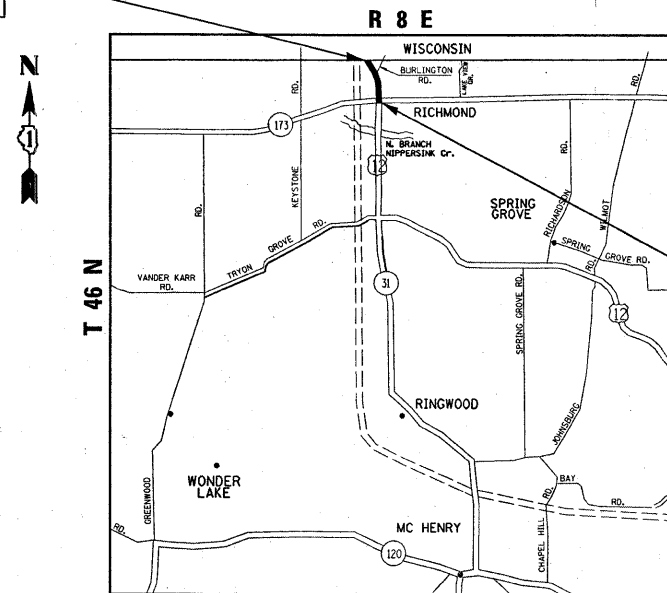
FULL SIZE PLANS HAVE BEEN PREPARED USING STANDARD ENGINEERING SCALES. REDUCED SIZED PLANS WILL NOT CONFORM TO STANDARD SCALES. IN MAKING MEASUREMENTS ON REDUCED PLANS, THE ABOVE SCALES MAY BE USED.

J.U.L.I.E.
JOINT UTILITY LOCATION INFORMATION FOR EXCAVATION
1-800-892-0123
OR 811

PROJECT ENGINEER ROBERT BORO (847)705-4178
PROJECT MANAGER KEN ENG

CONTRACT NO. 60D41

PROJECT ENDS
STA. 66 + 46



RICHMOND TOWNSHIP

TRAFFIC DATA

ADT (2005) = 15,400
POSTED SPEED LIMIT = 35 MPH - 45 MPH

PROJECT BEGINS
STA. 6 + 60

GROSS LENGTH OF PROJECT = 5,986 LINEAL FEET = 1.134 MILES
NET LENGTH OF PROJECT = 5,986 LINEAL FEET = 1.134 MILES

STATE OF ILLINOIS
DEPARTMENT OF TRANSPORTATION
DIVISION OF HIGHWAYS

SUBMITTED FEBRUARY 3, 20 09

Diana M. O'Keefe
DEPUTY DIRECTOR OF HIGHWAYS, REGION ENGINEER

March 27, 20 09
Charles J. Ingersoll
ENGINEER OF DESIGN AND ENVIRONMENT

March 27, 20 09
Christine M. Reed
DIRECTOR OF HIGHWAYS, CHIEF ENGINEER

**PRINTED BY THE AUTHORITY
OF THE STATE OF ILLINOIS**