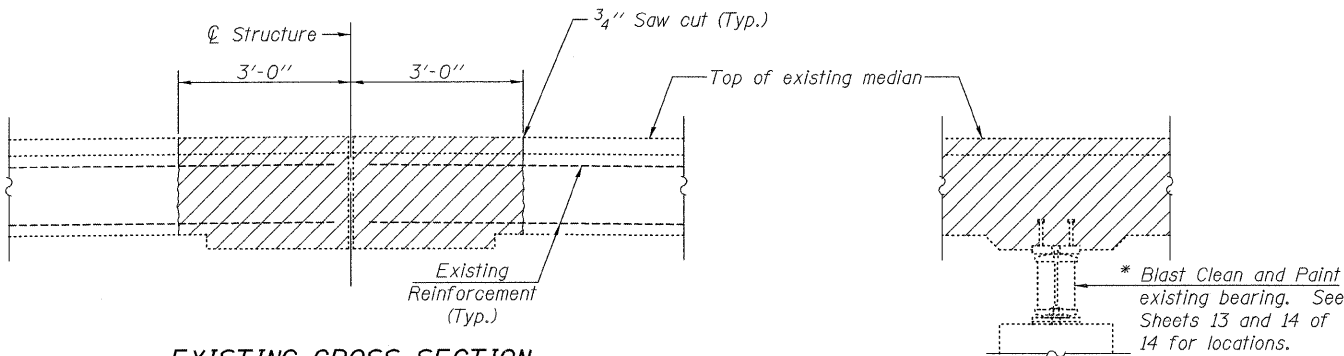
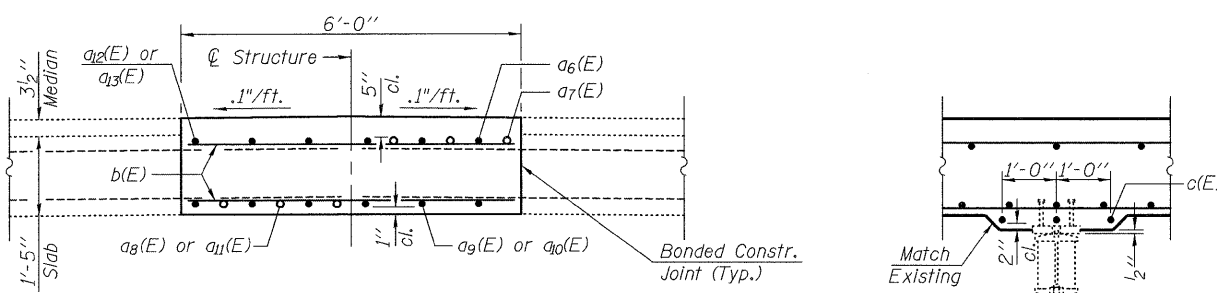


LONGITUDINAL JOINT CLOSURE PLAN



EXISTING CROSS SECTION

SECTION A-A REMOVAL



AT MIDSPAN NEAR PIERS

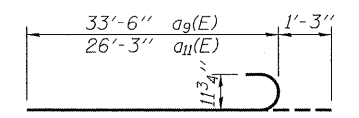
PROPOSED CROSS SECTION

SECTION A-A

BILL OF MATERIAL

Bar	No.	Size	Length	Shape
a <sub>6</sub> (E)	12	#10	26'-9"	—
a <sub>7</sub> (E)	12	#10	14'-3"	—
a <sub>8</sub> (E)	6	#9	27'-6"	—
a <sub>9</sub> (E)	12	#9	34'-9"	—
a <sub>10</sub> (E)	6	#9	41'-9"	—
a <sub>11</sub> (E)	12	#9	27'-6"	—
a <sub>12</sub> (E)	12	#5	20'-0"	—
a <sub>13</sub> (E)	6	#5	17'-0"	—
b(E)	191	#5	5'-9"	—
c(E)	6	#7	6'-6"	—
Concrete Removal			Cu. Yd.	37.5
Concrete Superstructure			Cu. Yd.	38.3
Protective Coat			Sq. Yd.	67
Reinforcement Bars, Epoxy Coated			Pound	7660
Cleaning and Painting Structural Steel, Location 1			L. Sum	1

\* Cost of Blast Cleaning and Painting of Bearings shall be included with Cleaning and Painting Structural Steel, Location 1. See Special Provision for Cleaning and Painting Existing Steel Structures. The bearing shall be cleaned per New White Blast Cleaning-SSPC-SPI0 and shall be painted according to the requirements of paint system 1-OZ/E/U. The color of the final finish coat shall be Gray, Munsell No. 5B 7/1.



a<sub>9</sub>(E) & a<sub>11</sub>(E) BARS

NOTES

Hatched areas indicate concrete sections to be removed. Care shall be exercised by the contractor during and following Concrete Removal operations to ensure that the existing rebar remaining in place are not damaged. All existing reinforcement to be incorporated into new construction shall be blast-cleaned, straightened, and properly positioned prior to concrete placement. Any reinforcement damaged during Concrete Removal shall be repaired or replaced using an approved Bar Splicer or Mechanical System. Cost included with Concrete Removal. Concrete Removal at existing bearings to remain in place shall be performed according to Article 501.05 of the Standard Specifications. Min. Lap Length for #5 bars = 1'-4".

<p>Excellence through Ownership</p> <p>200 West Front Street Wheaton, IL 60187</p>	ILLINOIS DEPARTMENT OF TRANSPORTATION
	<p>LONGITUDINAL JOINT DETAILS IL 43 OVER STONY CREEK FAP RTE 348 SECTION 3128-Z-B-1 COOK COUNTY STATION 179+01.40 STRUCTURE NO. 016-0322</p>
<p>DATE: 1-30-2009</p>	<p>DRAWN BY: BLB CHECKED BY: WJV</p>