

F.A.P. RTE.	SECTION	COUNTY	TOTAL SHEETS	SHEET NO.
341	N-4-C-1	KANE	32	1
FED. ROAD DIST. NO.	ILLINOIS	CONTRACT NO. 60D72		

STATE OF ILLINOIS
DEPARTMENT OF TRANSPORTATION
DIVISION OF HIGHWAYS

**PROPOSED
HIGHWAY PLANS**

FAP 341 / IL. 72
SECTION: N-4-C-1
OVER I-90
BRIDGE DECK OVERLAY
KANE COUNTY
PROJECT: *ESP-0341(046)*
C-91-091-08
RUTLAND TOWNSHIP
R. 7 E.

FOR INDEX OF SHEETS, SEE SHEET NO. 2

DESIGN DESIGNATION:
OTHER PRINCIPAL ARTERIAL
POSTED SPEED : 40 M.P.H.
2007 ADT = 13,500
2021 ADT = 12,150

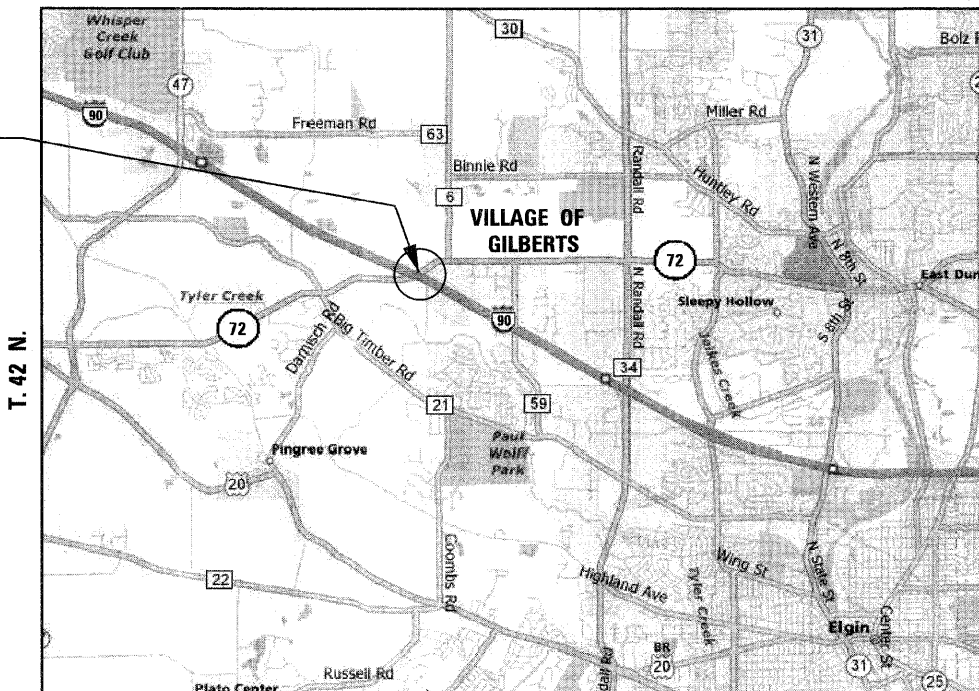
MUNICIPALITY INVOLVED:
VILLAGE OF GILBERTS

D-91-091-08

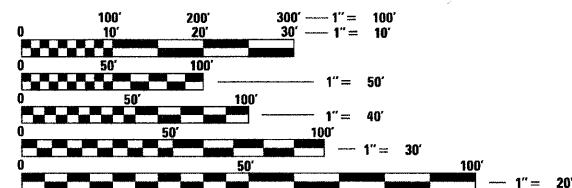


LOCATION OF SECTION INDICATED THUS: - [black rectangle] -

PROJECT:
F.A.P. 341 / IL. 72
OVER I-90
S.N. 045-0074



GROSS LENGTH OF PROJECT = 393.00 FEET = 0.074 MILES
NET LENGTH OF PROJECT = 393.00 FEET = 0.074 MILES



FULL SIZE PLANS HAVE BEEN PREPARED USING STANDARD ENGINEERING SCALES. REDUCED SIZED PLANS WILL NOT CONFORM TO STANDARD SCALES. IN MAKING MEASUREMENTS ON REDUCED PLANS, THE ABOVE SCALES MAY BE USED.

J.U.L.I.E.
JOINT UTILITY LOCATING INFORMATION FOR EXCAVATORS
1-800-892-0123
OR 811

DISTRICT ONE - DESIGN
PROJECT MANAGER : ISAAC KWARTENG (847) 705-4230
PROJECT ENGINEER : RON ZENAROSA (847) 705-4212

CONTRACT NO. 60D72

STATE OF ILLINOIS
DEPARTMENT OF TRANSPORTATION
DIVISION OF HIGHWAYS

SUBMITTED JANUARY 14, 2009

Diana M. O'Keefe
DEPUTY DIRECTOR OF HIGHWAYS, REGION ONE ENGINEER

March 13, 2009
Charles G. Ingard
ENGINEER OF DESIGN AND ENVIRONMENT

March 13, 2009
Christine M. Reed
DIRECTOR OF HIGHWAYS, CHIEF ENGINEER



Birinder S. Sachdeva January 12, 2009
BIRINDER S. SACHDEVA, P.E. DATE
EXPIRES: 11-30-2009



Bhadrach N. Shah 01/12/09
BHADRACH N. SHAH, S.E., P.E. DATE
EXPIRES: 11-30-2010

DESIGN SECTION ENGINEER :
 CHRISTIAN-ROGE & ASSOCIATES, INC.
ENGINEERS - PLANNERS - SURVEYORS
211 W. WACKER DRIVE CHICAGO, IL 60606
TELEPHONE: 312 372-2023

**PRINTED BY THE AUTHORITY
OF THE STATE OF ILLINOIS**