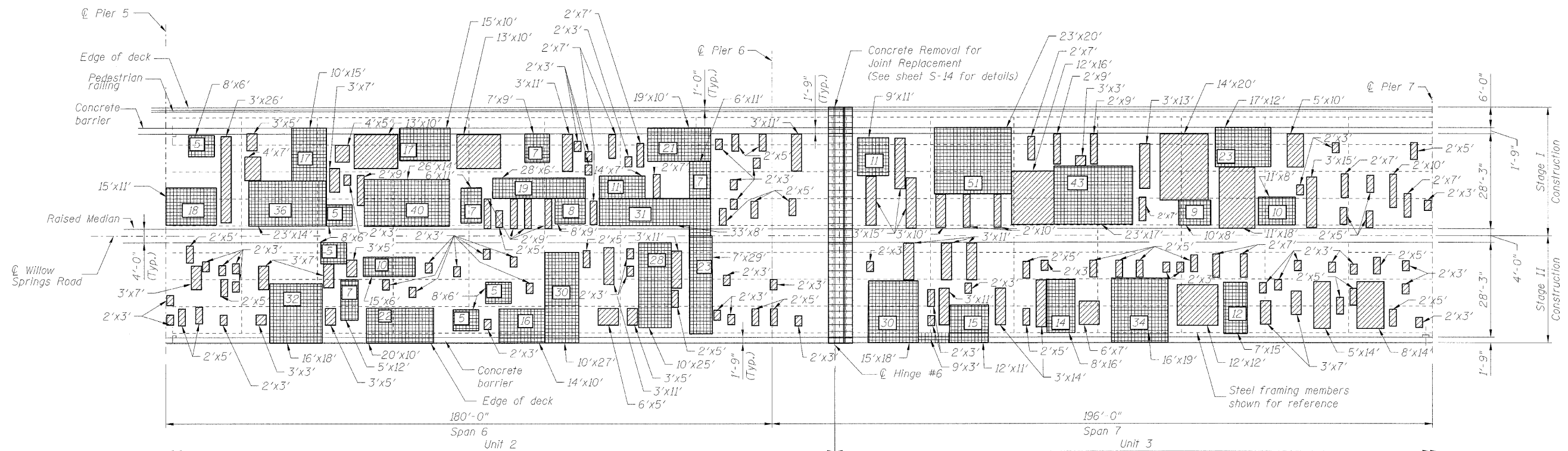


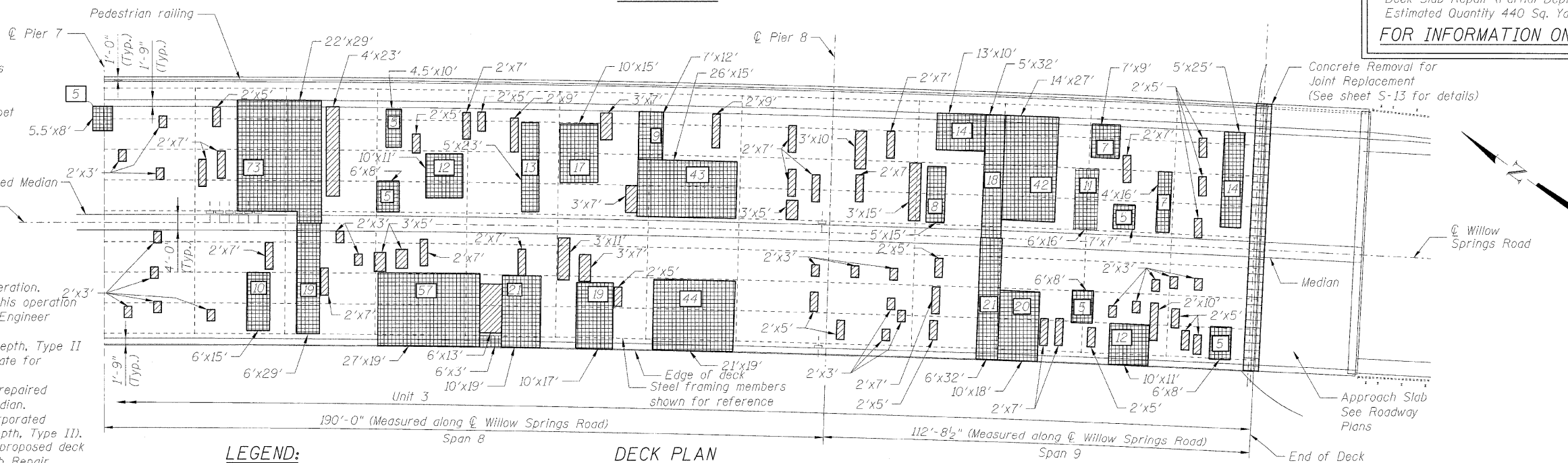
STATE OF ILLINOIS
DEPARTMENT OF TRANSPORTATION



DECK PLAN

NOTES:

- Repairs shall include but not be limited to the areas shown. The actual areas to be determined by the Engineer at the time of construction.
- If the length along the bridge centerline of Deck Slab Repairs (Full Depth, Type II) when measured in the field and approved by the Engineer exceeds what is indicated in plan and is equal or greater than 10 feet, the entire section of the adjacent parapet shall be removed and replaced according to details shown on Sheet S-15A.
- The Engineer shall record the actual deck repair areas in order to document as-built conditions for the future reference.
- For expansion joint rehabilitation, see sheet S-13 thru S-15.
- For parapet removal and repairs see sheet S-9 thru S-12.
- Concrete Removal includes only deck removal at joints.
- Contractor shall use extreme care in the concrete removal operation. Any spalling, beam, shear stud or rebar damage caused by this operation shall be repaired by the Contractor to the satisfaction of the Engineer at no additional cost to the Department.
- Quantities in the Bill of Material for Deck Slab Repairs Full Depth, Type II are 10% greater than areas shown on deck plan to accommodate for degradation since last delamination survey.
- Protective coat shall be applied to N.B. & S.B. Lanes and to repaired and newly constructed areas of concrete on parapets and median.
- Existing reinforcement in the deck shall be cleaned and incorporated into the repairs. Cost included with Deck Slab Repair (Full Depth, Type II).
- Existing scuppers to be temporarily supported and cast with proposed deck if affected by Deck Slab Repair. Cost included with Deck Slab Repair (Full Depth, Type II).
- Bridge Deck Latex Concrete Overlay for each stage shall be placed only after all Deck Slab Repairs for the stage have been completed.



DECK PLAN

Deck Slab Repair (Partial Depth)
Estimated Quantity 440 Sq. Yd.
FOR INFORMATION ONLY

LEGEND:

- Deck Slab Repair (Full Depth), Type II
X denotes estimated quantity in Sq. Yd.
- Concrete removal for expansion joint replacement
- Deck Slab Repair (Partial Depth)
For information only, Quantity included with Bridge Deck Hydro-Scarification 1"

BILL OF MATERIAL

ITEM	UNIT	QUANTITY
Hot-Mix Asphalt Surface Removal (Deck)	Sq. Yd.	4,261
Concrete Removal	Cu. Yd.	24.8
Bridge Deck Grooving	Sq. Yd.	3,959
Protective Coat	Sq. Yd.	4,273
Bridge Deck Latex Concrete Overlay, 2 1/2 inches	Sq. Yd.	4,201
Bridge Deck Hydro-Scarification 1"	Sq. Yd.	4,261
Deck Slab Repair (Full Depth, Type II)	Sq. Yd.	1,350

SUPERSTRUCTURE REPAIRS II
S.N. 016-0540

DESIGNED B. Sauter
CHECKED E. Mroczek
DRAWN R. Danley
CHECKED B. Sauter

GIORBA GROUP, INC.
CONSULTING ENGINEERS
5507 North Cumberland Avenue, Suite 402 Chicago, Illinois 60656
Tel. 773.775.4009 Fax 773.775.4014 Email chicago@clorba.com

Entire Sheet Revised 4/08/09 E.K.M.

SHEET NO. S-8	F.A.U. RTE.	SECTION	COUNTY	TOTAL SHEETS	SHEET NO.
	2697	142 B-1-I	COOK	48	22
S-27 SHEETS			CONTRACT NO. 60D89		
FED. ROAD DIST. NO.		ILLINOIS FED. AID PROJECT			