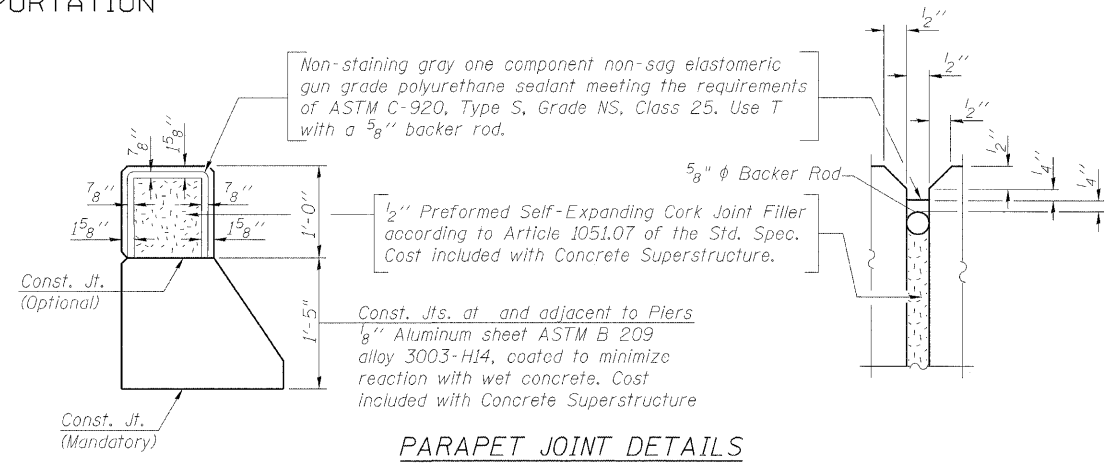
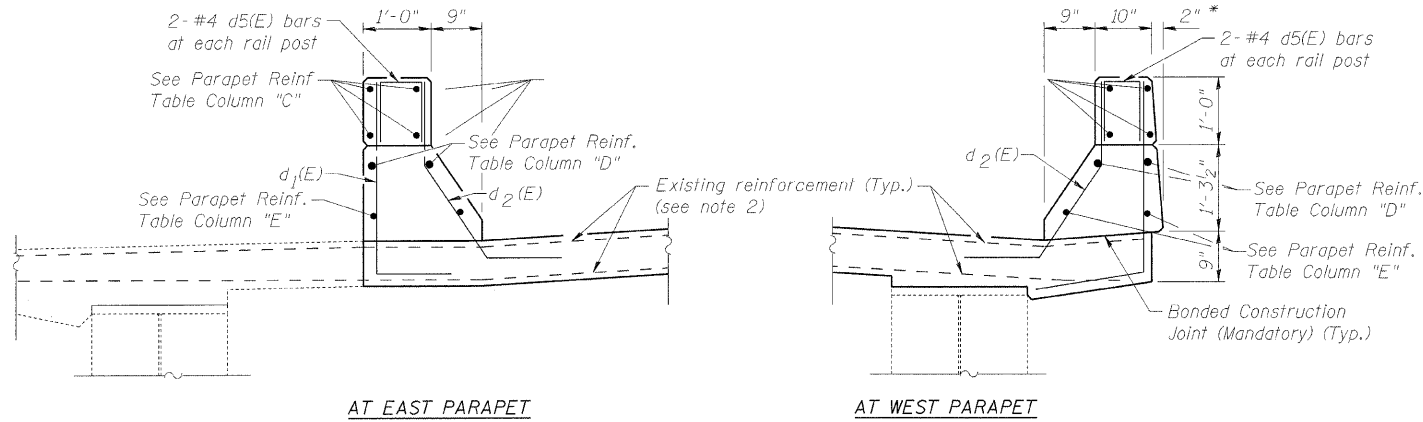


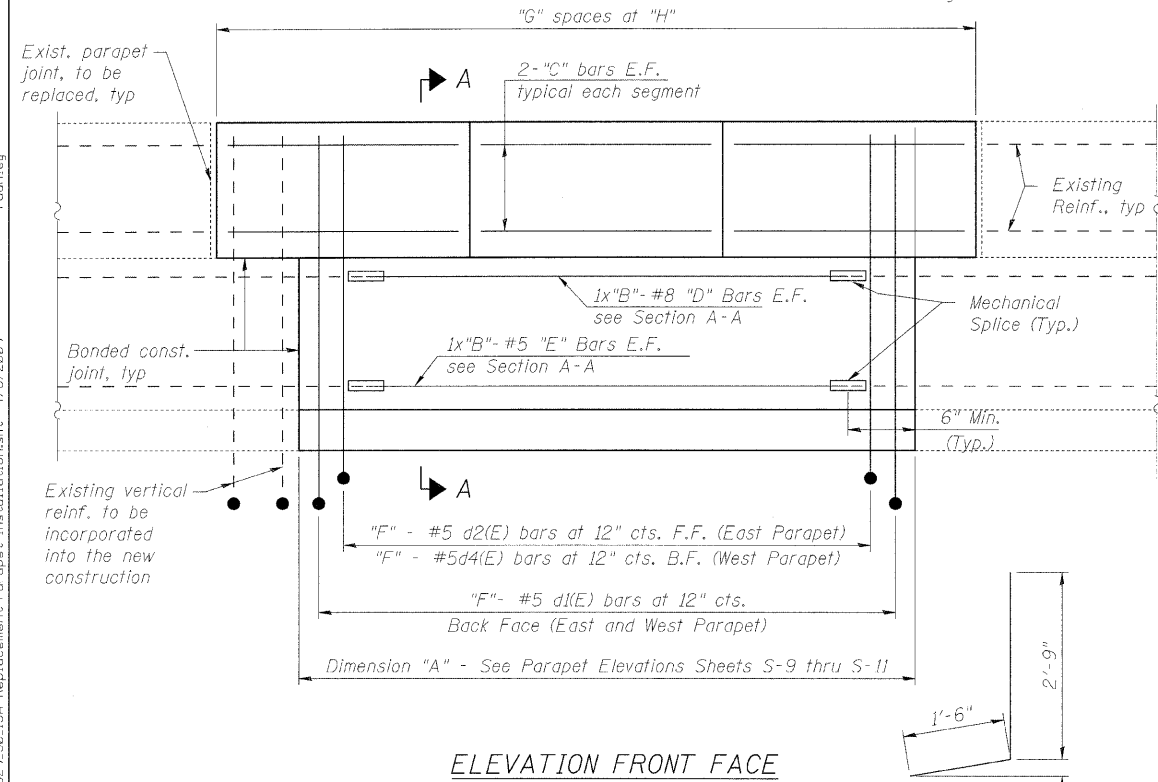
STATE OF ILLINOIS
DEPARTMENT OF TRANSPORTATION



SECTION A-A * Parapet dimensions should match existing and should be verified (Typ.)

PARAPET REINFORCEMENT TABLE

BILL OF MATERIAL



Parapet Location	A	B	C	D	E	F	G	H
1	13.00'	1	e1(E)	e10(E)	e11(E)	14	1	15'-10 1/2"
2	45.00'	2	e1(E)	e12(E)	e13(E)	46	5	16'-2"
3	14.00'	1	e2(E)	e14(E)	e15(E)	15	1	14'-6 3/4"
4	98.00'	3	e3(E)	e16(E)	e17(E)	99	6	17'-6 3/8"
5	37.00'	2	e4(E)	e18(E)	e19(E)	38	3	15'-6 3/8"
6	11.00'	1	e4(E)	e20(E)	e21(E)	12	1	15'-6 3/8"
7	11.00'	1	e4(E)	e20(E)	e21(E)	12	1	15'-6 3/8"
8	16.00'	1	e3(E)	e24(E)	e25(E)	17	1	17'-6 3/8"
9	20.00'	1	e3(E)	e26(E)	e27(E)	21	2	17'-6 3/8"
10	23.00'	1	e3(E)	e50(E)	e51(E)	24	2	17'-6 3/8"
11	43.00'	2	e1(E)	e12(E)	e13(E)	44	3	16'-0"
12	16.00'	1	e1(E)	e24(E)	e25(E)	17	1	16'-0"
13	43.00'	2	e4(E)	e30(E)	e31(E)	44	4	15'-4 1/8"
14	10.00'	1	e4(E)	e32(E)	e33(E)	11	1	15'-4 1/8"
15	21.00'	1	e4(E)	e34(E)	e35(E)	22	2	15'-4 1/8"
16	16.00'	1	e4(E)	e24(E)	e25(E)	17	2	15'-3"
17	10.00'	1	e4(E)	e32(E)	e33(E)	11	2	15'-3"
20	55.00'	2	e(E)	e36(E)	e37(E)	56	5	15'-10 1/2"
21	24.00'	1	e1(E)	e28(E)	e29(E)	25	2	16'-3"
22	6.58'	1	e5(E)	e38(E)	e39(E)	8	1	11'-0 3/4"
23	10.17'	1	e6(E)	e40(E)	e41(E)	11	1	10'-2"
24	10.17'	1	e6(E)	e40(E)	e41(E)	11	1	10'-2"
25	53.00'	2	e3(E)	e42(E)	e43(E)	54	3	17'-6 3/8"
26	31.00'	2	e4(E)	e44(E)	e45(E)	32	3	15'-6 3/8"
27	10.00'	1	e3(E)	e32(E)	e33(E)	11	1	17'-6 3/8"
28	15.00'	1	e3(E)	e46(E)	e47(E)	16	2	17'-6 3/8"
29	19.00'	1	e3(E)	e48(E)	e49(E)	20	2	17'-6 3/8"
30	23.00'	1	e1(E)	e50(E)	e51(E)	24	3	16'-0"
31	17.00'	1	e1(E)	e52(E)	e53(E)	18	2	16'-0"
32	22.00'	1	e4(E)	e54(E)	e55(E)	23	2	15'-6 1/8"
33	32.00'	2	e4(E)	e56(E)	e57(E)	33	3	15'-4 7/8"

Bar	No.	Size	Length (ft)	Shape
d1(E)	342	# 5	3'-9"	J
d2(E)	806	# 5	3'-5"	J
d4(E)	464	# 5	4'-3"	J
d5(E)	194	# 5	2'-2"	□
e(E)	24	# 5	15'-6"	—
e1(E)	64	# 5	15'-9"	—
e2(E)	4	# 5	14'-3"	—
e3(E)	76	# 5	17'-2"	—
e4(E)	96	# 5	15'-0"	—
e5(E)	4	# 5	9'-6"	—
e6(E)	8	# 5	9'-10"	—
e10(E)	2	# 8	12'-0"	—
e11(E)	2	# 5	12'-0"	—
e12(E)	8	# 8	24'-3"	—
e13(E)	8	# 5	23'-1"	—
e14(E)	2	# 8	13'-0"	—
e15(E)	2	# 5	13'-0"	—
e16(E)	6	# 8	35'-4"	—
e17(E)	6	# 5	33'-9"	—
e18(E)	4	# 8	20'-3"	—
e19(E)	4	# 5	19'-1"	—
e20(E)	4	# 8	10'-0"	—
e21(E)	4	# 5	10'-0"	—
e24(E)	6	# 8	15'-0"	—
e25(E)	6	# 5	15'-0"	—
e26(E)	2	# 8	19'-0"	—
e27(E)	2	# 5	19'-0"	—
e28(E)	2	# 8	23'-0"	—
e29(E)	2	# 5	23'-0"	—
e30(E)	4	# 8	23'-3"	—
e31(E)	4	# 5	22'-1"	—
e32(E)	6	# 8	9'-0"	—
e33(E)	6	# 5	9'-0"	—
e34(E)	2	# 8	20'-0"	—
e35(E)	2	# 5	20'-0"	—
e36(E)	4	# 8	29'-3"	—
e37(E)	4	# 5	28'-1"	—
e38(E)	2	# 8	10'-5"	—

Bar	No.	Size	Length (ft)	Shape
e39(E)	2	# 5	10'-5"	—
e40(E)	4	# 8	9'-2"	—
e41(E)	4	# 5	9'-2"	—
e42(E)	4	# 8	28'-3"	—
e43(E)	4	# 5	27'-1"	—
e44(E)	4	# 8	17'-3"	—
e45(E)	4	# 5	16'-1"	—
e46(E)	2	# 8	14'-0"	—
e47(E)	2	# 5	14'-0"	—
e48(E)	2	# 8	18'-0"	—
e49(E)	2	# 5	18'-0"	—
e50(E)	4	# 8	22'-0"	—
e51(E)	4	# 5	22'-0"	—
e52(E)	2	# 8	16'-0"	—
e53(E)	2	# 5	16'-0"	—
e54(E)	2	# 8	21'-0"	—
e55(E)	2	# 5	21'-0"	—
e56(E)	4	# 8	17'-9"	—
e57(E)	4	# 5	16'-7"	—
Reinforcement Bars			Lb.	17,050
Epoxy Coated				
Conc. Superstructure			Cu. Yd.	103.8
Mechanical Splice			Each	256

- NOTES:
1. Parapet locations shown on sheets S-9 through S-12.
 2. The existing reinforcement that will be kept in place shall be sandblasted clean, straightened, and incorporated into the new construction.
 3. Bar bending details shown on sheet S-15.
 4. Bars indicated thus 1x2 #5 etc. indicates 1 line of bars with 2 lengths per line.

Lengths of "e" bars are determined based on a 2" clear cover at the upper portion of the parapet and on a Mechanical Splice at 6 inches from the face of the existing parapet.

Bar dimension to be modified in field if parapet removal areas are altered due to conditions

DESIGNED B. Sauter
CHECKED E. Mroczek
DRAWN R. Danley
CHECKED B. Sauter

Ciorba Group, Inc.
CONSULTING ENGINEERS
5507 North Cumberland Avenue, Suite 402 Chicago, Illinois 60656
Tel. 773.775.4009 Fax 773.775.4014 Email chicago@ciorba.com

SHEET NO. S-15A	F.A.U. RTE.	SECTION	COUNTY	TOTAL SHEETS	SHEET NO.
	2697	142 B-1-I	COOK	48	29A
S-27 SHEETS			CONTRACT NO. 60D89		
FED. ROAD DIST. NO.		ILLINOIS FED. AID PROJECT			

Added Sheet 4/08/09 E.K.M.

PARAPET REPLACEMENT DETAILS
S.N. 016-0540