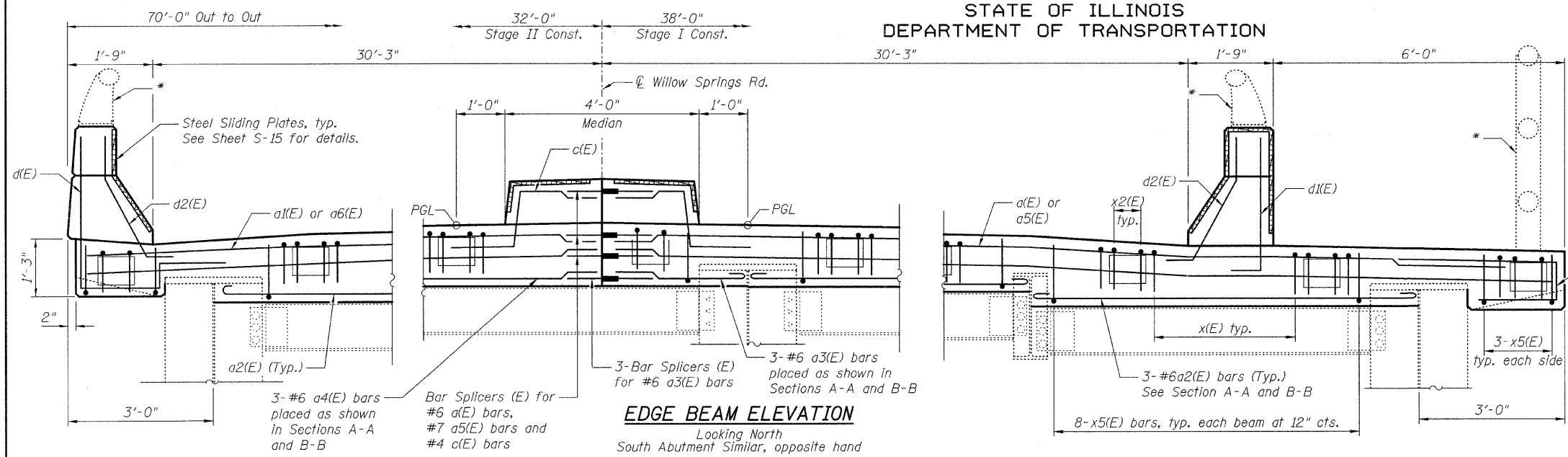
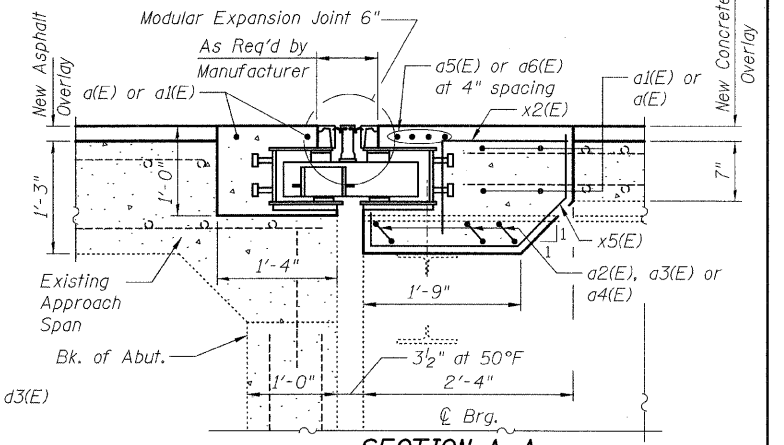


STATE OF ILLINOIS
DEPARTMENT OF TRANSPORTATION



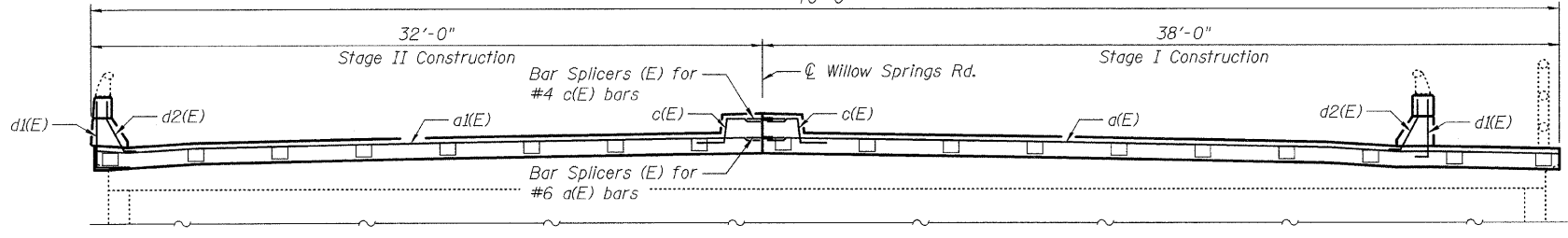
EDGE BEAM ELEVATION

Looking North
South Abutment Similar, opposite hand



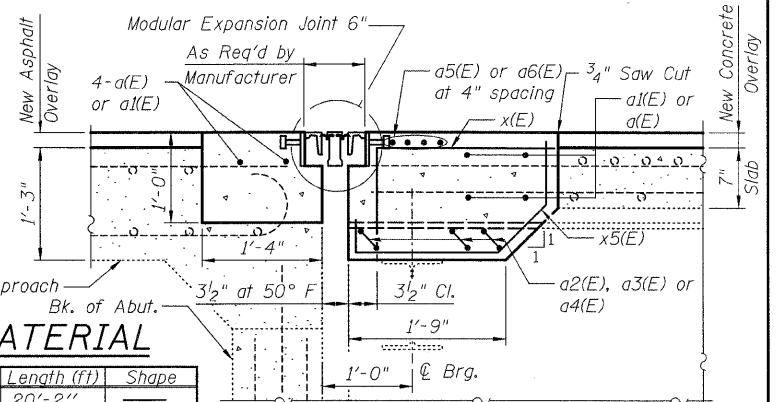
SECTION A-A THRU MODULAR JOINT SUPPORT BOX

The Support Box must be rigidly attached to the abutment per the manufacturer's specifications. Space Support Box 2' from girders and stringers at 4" spacing.



NORTH ABUTMENT ELEVATION

Looking North
South Abutment Similar, opposite hand



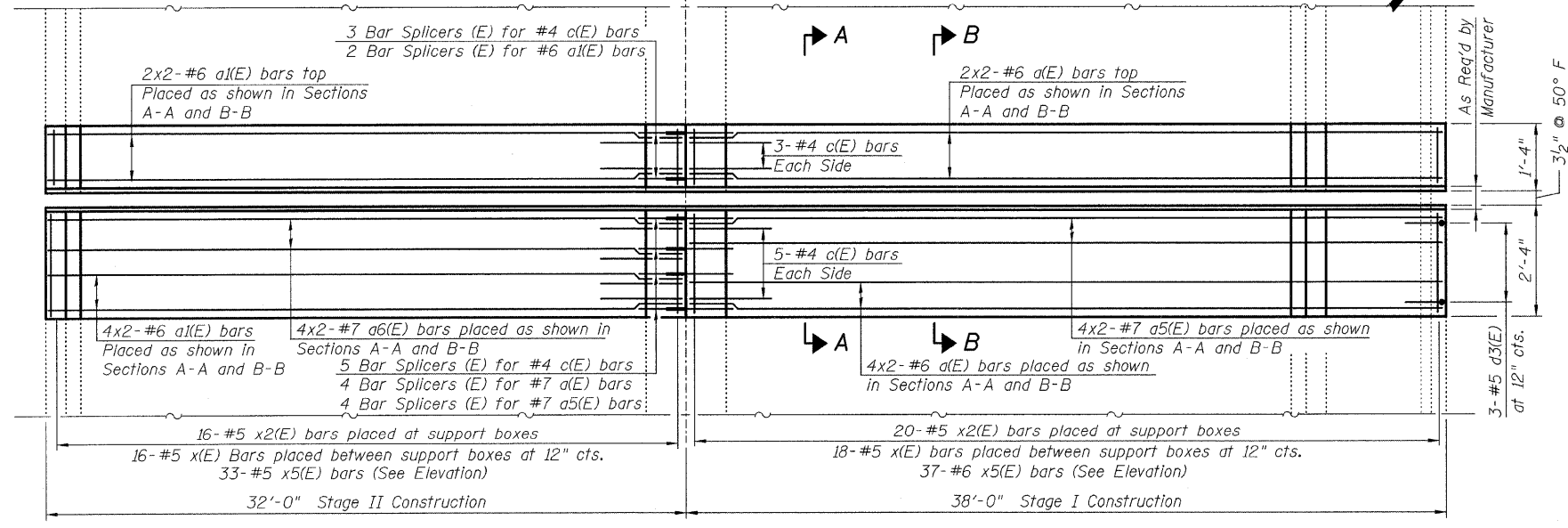
SECTION B-B THRU ABUTMENT

BILL OF MATERIAL

Bar	No.	Size	Length (ft)	Shape
a(E)	112	# 6	20'-2"	—
a1(E)	112	# 6	17'-2"	—
a2(E)	42	# 6	9'-1"	—
a3(E)	6	# 6	3'-0"	—
a4(E)	6	# 6	5'-5"	—
a5(E)	16	# 7	21'-3"	—
a6(E)	16	# 7	18'-3"	—
a7(E)	140	# 6	10'-5"	—
a8(E)	20	# 6	5'-1"	—
a9(E)	20	# 6	7'-1"	—
c(E)	84	# 4	2'-10"	—
d(E)	22	# 5	7'-0"	—
d1(E)	30	# 5	3'-9"	—
d2(E)	52	# 5	3'-5"	—
d3(E)	44	# 5	7'-0"	—
x(E)	136	# 5	2'-7"	—
x1(E)	68	# 5	4'-11"	—
x2(E)	144	# 5	1'-11"	—
x3(E)	72	# 5	4'-1"	—
x4(E)	140	# 5	4'-4"	—
x5(E)	140	# 5	2'-4"	—
x6(E)	140	# 5	1'-8"	—
Concrete Superstructure	Cu. Yd.		70.0	
Reinforcement Bars, Epoxy Coated	Pound		14,240	
Modular Expansion Joint 6"	Foot		205	
Modular Expansion Joint 9"	Foot		68	

NOTES:

1. Work this sheet with sheets S-14 & S-15.
2. See sheet S-15 for existing and proposed parapet Elevations.
3. Existing reinforcement shown should be blast cleaned, straightened and incorporated into new construction.
4. Modular expansion joints shall be assembled in their final relative position with the ends in place for shop inspection and acceptance.
5. Bars indicated thus 1 x 2 #5 etc. indicates 1 line of bars with 2 lengths per line.
6. Bar bending detail shown on sheet S-14.
7. No vehicular load will be allowed on the section of approach span under construction after concrete removal has begun for the block-out at the approach span and before the proposed concrete has attained the required strength.



NORTH ABUTMENT PLAN

South Abutment similar by rotation

* Removal and reattachment of Railing included in Concrete Removal

DESIGNED	B. Sauter
CHECKED	E. Mroczek
DRAWN	R. Danley
CHECKED	B. Sauter

Ciorba Group, Inc.
CONSULTING ENGINEERS
5507 North Cumberland Avenue, Suite 402 Chicago, Illinois 60656
Tel. 773.775.4009 Fax 773.775.4014 Email chicago@ciorba.com

MIN. LAP SPLICES

#6 bars- 2'-7"
#7 bars- 3'-5"

SHEET NO. S-13 S-27 SHEETS	F.A.U. RTE. 2697	SECTION 142 B-1-I	COUNTY COOK	TOTAL SHEETS 48	SHEET NO. 27
	CONTRACT NO. 60D89				
FED. ROAD DIST. NO. ILLINOIS FED. AID PROJECT					

**EXPANSION JOINT REPLACEMENT I
S.N. 016-0540**

2/4/2009 rdanley
 c:\proj\3329\3329-30\design\structural\load\concrete_repairs\3329-30_13_Exp_Joint_Replacement_1.sht