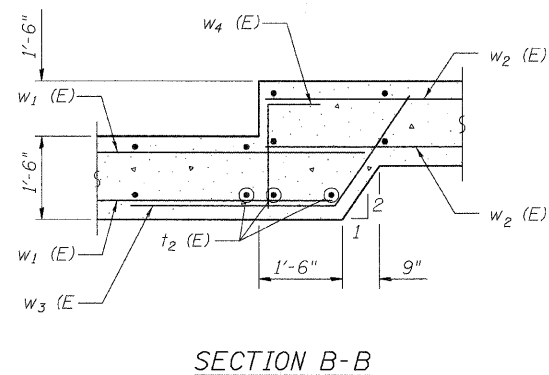
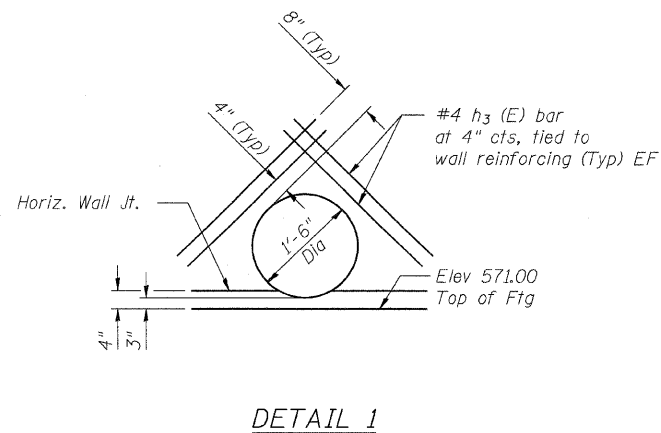
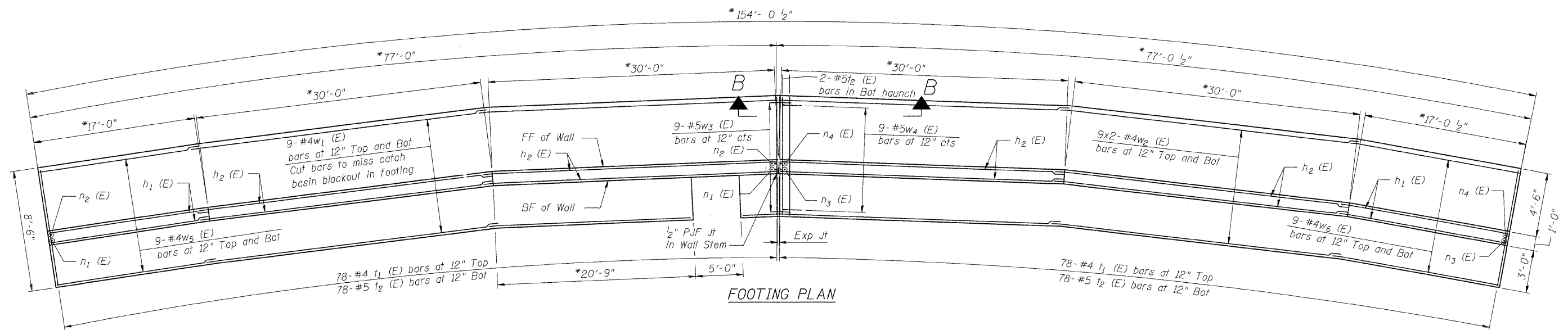
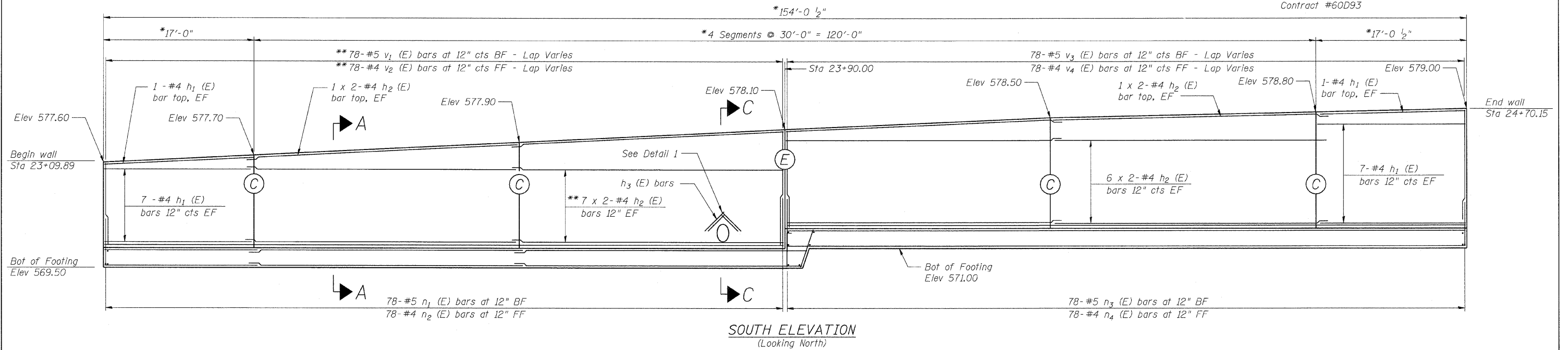


STATE OF ILLINOIS  
DEPARTMENT OF TRANSPORTATION

ROUTE NO.	SECTION	COUNTY	SHEET NO.	SHEET NO.
290	2007-0577	COOK	60	43
FED. ROAD DIST. NO. 7		ILLINOIS	FED. AID PROJECT-	

SHEET NO. 3  
4 SHEETS

Contract #60D93



ABBREVIATION LIST

Bot	Bottom
BF	Back Face
Exp	Expansion
EF	Each Face
FF	Front Face
Jt	Joint
Typ	Typical

MIN BAR LAP

#4 bars = 1'-8"  
#5 bars = 2'-2"

NOTES:

For Bill of Material See Sheet 4 of 4.

Bars Indicated Thus: 7 x 2- #4 Denotes 7 Lines of #4 Bars with 2 Lengths Per Line.

See Sheet 4 of 4 for Section A-A.

(E) Expansion Joint in wall stem. (See Sheet 4 of 4 for detail)

(C) Construction Joint in wall stem or footing. (See Detail on Sheet 4 of 4)

\* Measured along FF of wall.

\*\* Cut reinforcement as needed to miss Pipe opening in wall.

DESIGNED	NDR
CHECKED	DSE
DRAWN	TWK
CHECKED	NDR

8501 West Higgins Road, Suite 730, Chicago, Illinois 60631-2801  
www.stanleyconsultants.com  
Illinois Firm Registration No.: 1184-001533

GENERAL PLAN & ELEVATION  
CIRCLE INTERCHANGE RETAINING WALL  
I-94/I-290  
FROM I-290 EB RAMP  
TO DES PLAINES AVE  
F.A.I. 94/290-SECT. (2007-0577)  
COOK COUNTY