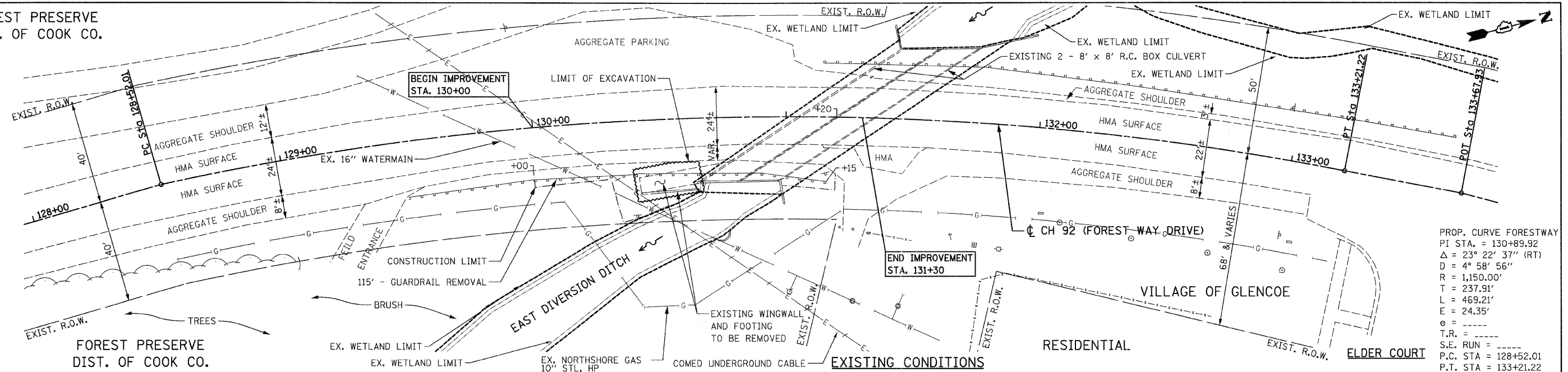
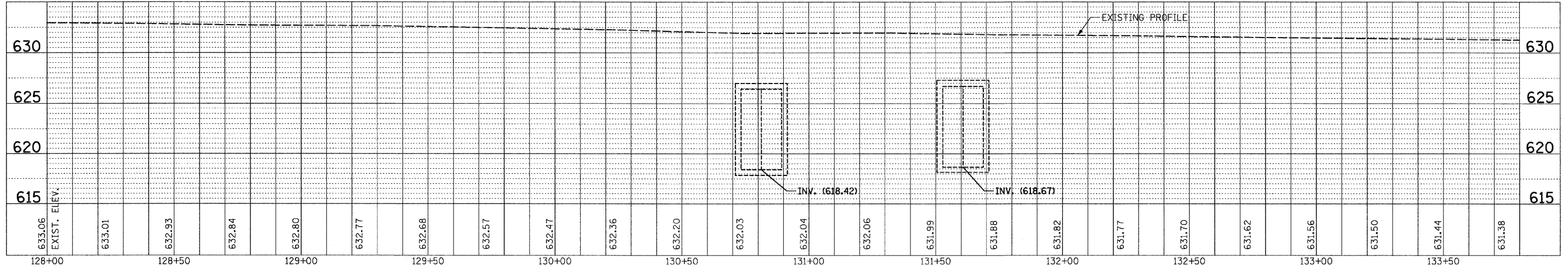
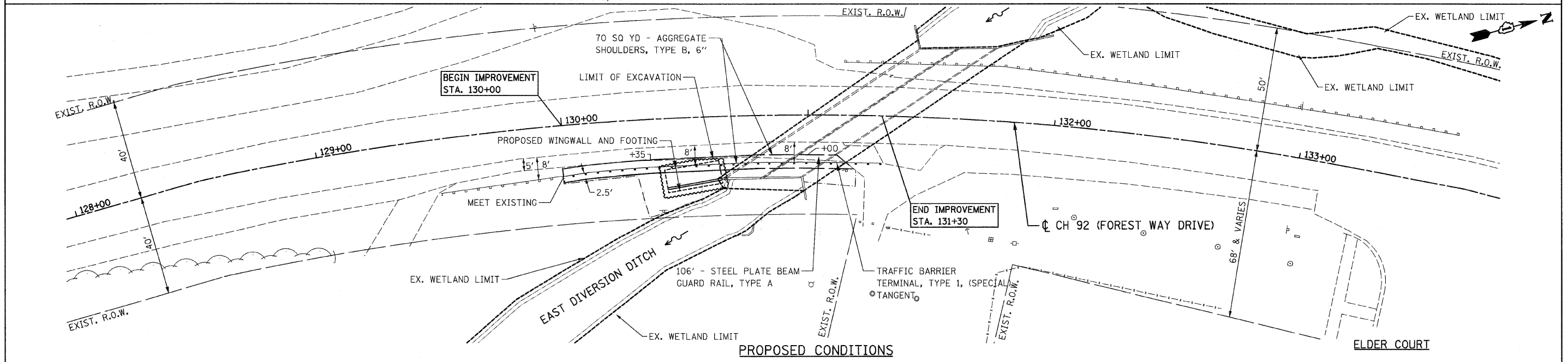


FOREST PRESERVE
DIST. OF COOK CO.



PROP. CURVE FORESTWAY
PI STA. = 130+89.92
Δ = 23° 22' 37" (RT)
D = 4° 58' 56"
R = 1,150.00'
T = 237.91'
L = 469.21'
E = 24.35'
e = -----
T.R. = -----
S.E. RUN = -----
P.C. STA = 128+52.01
P.T. STA = 133+21.22



FILE NAME = 1024M_sht_PP_28.dgn PLOT DATE = 1/26/2009	<p>CHRISTIAN-ROGE & ASSOCIATES, INC. ENGINEERS-PLANNERS-SURVEYORS 211 WEST WACKER DRIVE CHICAGO, ILLINOIS 60606 PHONE: (312)372-2023 FAX: (312)372-5274</p>	DESIGNED - S.J.P.	REVISED -	<p>STATE OF ILLINOIS DEPARTMENT OF TRANSPORTATION</p>	<p>EXISTING & PROPOSED PLAN AND PROFILE CH 92 (FOREST WAY DRIVE)</p>		CH	SECTION	COUNTY	TOTAL SHEETS	SHEET NO.
		DRAWN - A.Y.	REVISED -		92	2008-029 I	COOK	15	6		
	CHECKED - S.J.P.	REVISED -	<p>SCALE: 1" = 20' SHEET NO. 1 OF 1 SHEETS STA. 130+00 TO STA. 131+15</p>				<p>CONTRACT NO. 60E61</p>				
	DATE - JANUARY 27, 2009	REVISED -	<p>ILLINOIS FED. AID PROJECT</p>								