

SEQUENCE OF OPERATION

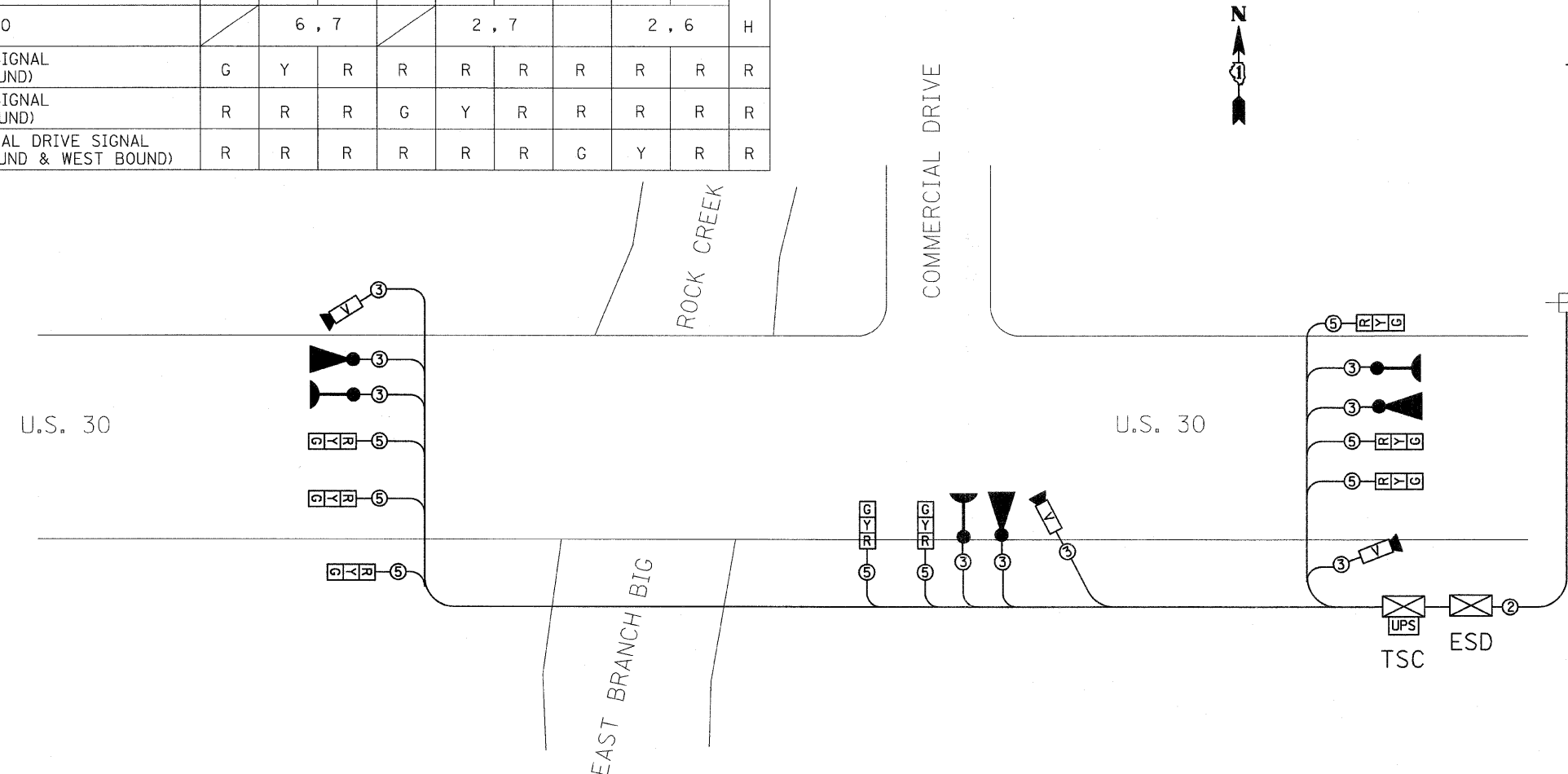
MOVEMENT	COMMERCIAL DRIVE		COMMERCIAL DRIVE		COMMERCIAL DRIVE		COMMERCIAL DRIVE		F L A S H	
	U.S. 30		U.S. 30		U.S. 30		U.S. 30			
PHASE	2		6		7					
INTERVAL	1	2A	2B	3	4A	4B	5	6A	6B	
CHANGE TO		6, 7			2, 7			2, 6		
U.S. 30 SIGNAL (EAST BOUND)	G	Y	R	R	R	R	R	R	R	R
U.S. 30 SIGNAL (WEST BOUND)	R	R	R	G	Y	R	R	R	R	R
COMMERCIAL DRIVE SIGNAL (EAST BOUND & WEST BOUND)	R	R	R	R	R	R	G	Y	R	R

TEMPORARY TRAFFIC SIGNAL BILL OF MATERIALS

DESCRIPTION	UNIT	QUANTITY
TEMPORARY BRIDGE TRAFFIC SIGNAL INSTALLATION	EACH	1

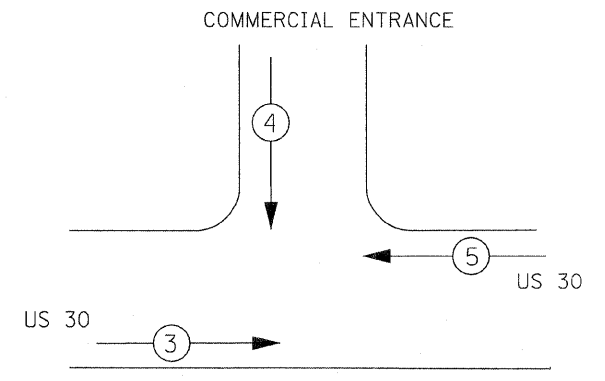
TEMPORARY CABLE DIAGRAM LEGEND

- PROPOSED
- TEMPORARY TRAFFIC SIGNAL SECTION OR PEDESTRIAN SIGNAL SECTION 12" (300 mm)
 - TSC TEMPORARY TRAFFIC SIGNAL CONTROLLER
 - ESD ELECTRIC SERVICE DISCONNECT, LIGHTING AND TRAFFIC SIGNAL
 - EXISTING COMED ELECTRIC SERVICE TRANSFORMER
 - INDICATES NUMBER OF CONDUCTORS IN CABLE. ALL CONDUCTORS TO BE NUMBER 14 AWG WIRE UNLESS OTHERWISE NOTED.
 - VIDEO DETECTOR SENSOR
 - CONFIRMATION BEACON
 - EMERGENCY VEHICLE LIGHT DETECTOR
 - UPS UNINTERRUPTIBLE POWER SUPPLY
 - TEMPORARY TRAFFIC SIGNAL HEAD (L.E.D.)



- NOTES:
- HEADS SHALL BE PLACED AS INDICATED ON THE TEMPORARY TRAFFIC SIGNAL PLAN OR AS DIRECTED BY THE ENGINEER. THE CONTRACTOR SHALL FURNISH ENOUGH CABLE SLACK TO RELOCATE HEADS TO ANY POSITION ON THE SPAN WIRE OR AT LOCATIONS ILLUSTRATED ON THE PLANS FOR CONSTRUCTION STAGING.
 - THE PROPOSED TEMPORARY BRIDGE TRAFFIC SIGNAL SHALL BE ACTIVATED, TESTED OPERATIONAL AND APPROVED BY THE ENGINEER BEFORE ANY ANY PERMANENT LANE CLOSURES.
 - ALL LABOR AND MATERIALS TO COMPLY WITH THESE REQUIREMENTS SHALL BE CONSIDERED INCLUDED IN THE BID PRICE OF TEMPORARY BRIDGE TRAFFIC SIGNAL INSTALLATION.
 - REMOVAL OF TEMPORARY SIGNALS SHOULD BE DONE AS DIRECTED BY THE ENGINEER AND MUST BE DONE IN COORDINATION WITH THE REMOVAL OF TEMPORARY LIGHTING.
 - EXACT LOCATION OF EXISTING POWER POLE WITH COMED TRANSFORMER TO BE DETERMINED IN THE FIELD.
 - PROPOSED LOCATION OF "ELECTRIC SERVICE DISCONNECT, LIGHTING AND TRAFFIC SIGNAL" (ESD) TO BE COORDINATED WITH PROPOSED TEMPORARY LIGHTING INSTALLATION.

PROPOSED EMERGENCY VEHICLE PREEMPTION SEQUENCE



LEGEND

- SINGLE ENTRY PHASE
- NUMBER REFERRING TO ASSOCIATED PHASE

PROPOSED EMERGENCY VEHICLE PREEMPTORS

PRIORITY LANE INTERVAL	3	5	4
MOVEMENT			

I.D.O.T. TRAFFIC SIGNAL INSTALLATION ELECTRICAL SERVICE REQUIREMENTS

TYPE	NO. LAMPS	WATTAGE		OPERATION	TOTAL WATTAGE
		INCAND.	LED		
SIGNAL (RED)	8	135	17	0.50	68
(YELLOW)	8	135	25	0.25	50
(GREEN)	8	135	15	0.25	30
ARROW		135	12	0.10	
PED. SIGNAL		90	25	1.00	
CONTROLLER	1	100	100	1.00	100.00
ILLUM. SIGN		84		0.05	
EVP	1		25	1.00	25
V.D.S.	1		25	1.00	25
FLASHER				0.50	--
TOTAL =					298

ENERGY COSTS TO BE IDOT DISTRICT 1 BILLED TO ADDRESS: 201 W.CENTER COURT SCHAUMBURG, IL 60196-1096

ENERGY SUPPLY CONTACT: JERRY SUHR
PHONE: 814-490-2282
COMPANY: COM. ED.