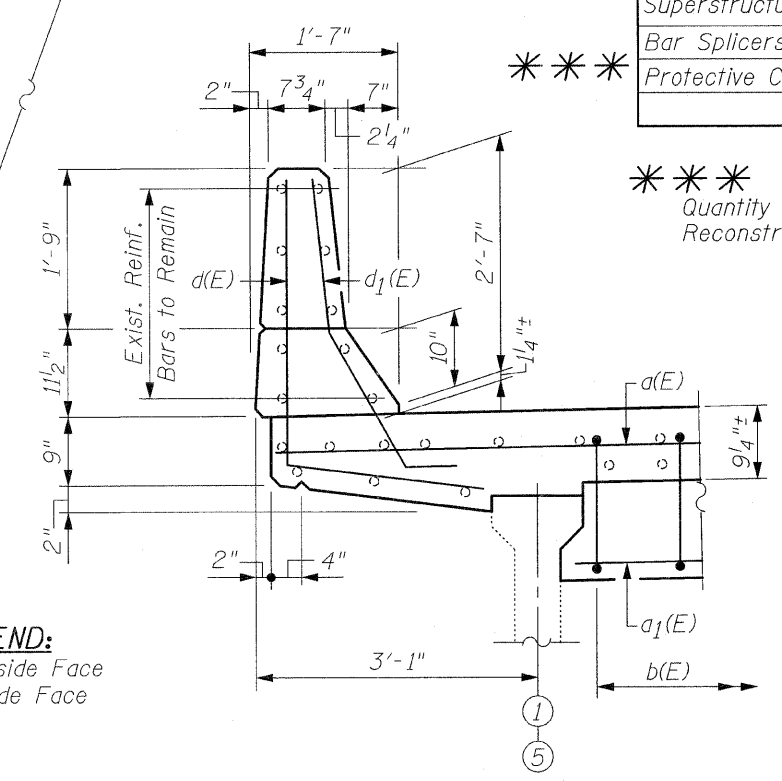


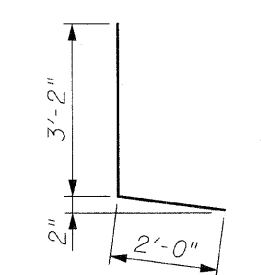
**BILL OF MATERIAL**

Bar	No.	Size	Length	Shape
d(E)	16	#7	22'-5"	—
a <sub>1</sub> (E)	10	#6	18'-5"	—
a <sub>2</sub> (E)	6	#6	20'-11"	—
d(E)	13	#4	5'-2"	L
d <sub>1</sub> (E)	13	#6	3'-11"	L
Reinforcement Bars, Epoxy Coated	Pound	1,320		
Concrete Removal	Cu. Yd.	12.3		
Concrete Superstructure	Cu. Yd.	12.5		
Bar Splicers	Each	16		
Protective Coat	Sq. Yd.	4		

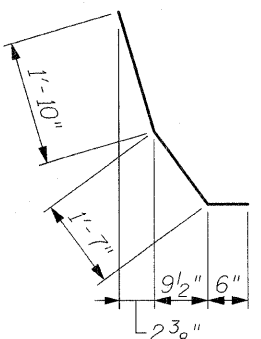
\*\*\*  
Quantity for Top & Inside Face of Reconstructed Parapets



**SECTION C-C**



**BAR d(E)**



**BAR d<sub>1</sub>(E)**

**PLAN AT EAST ABUTMENT**  
(Proposed)

**LEGEND:**  
O.F. = Outside Face  
I.F. = Inside Face

**CR & A**  
CHRISTIAN-ROGE & ASSOCIATES, INC.  
ENGINEERS / PLANNERS / SURVEYORS  
211 W. WACKER DRIVE CHICAGO, IL 60606  
PHONE: (312)372-2023 FAX: (312)372-5274