

F.A.P. RTE.	SECTION	COUNTY	TOTAL SHEETS	SHEET NO.
607	13 D-R-1	WILL	16	6
FED. ROAD DIST. NO. 1		ILLINOIS	HIGHWAY PROJECT	

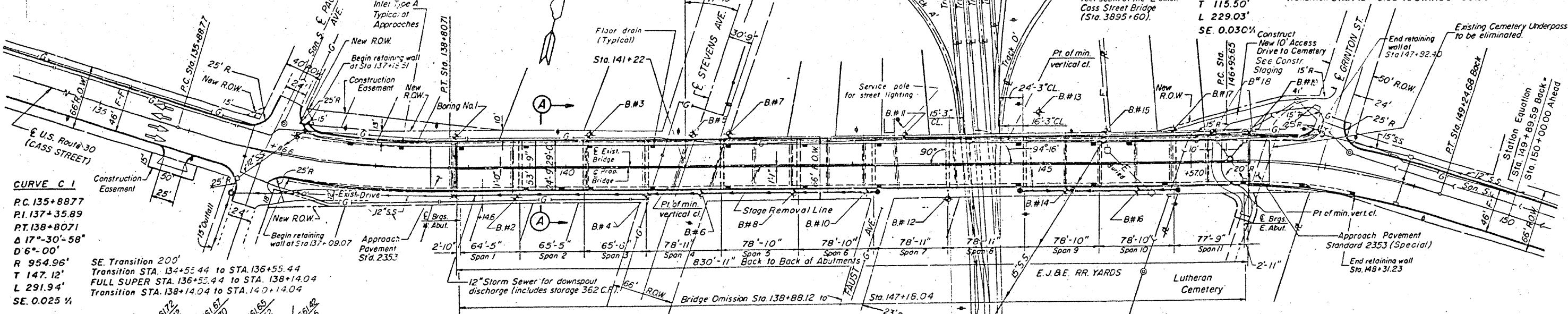
CONTRACT NO. 60E89

**Description of Existing Bridge:** The existing Cass Street viaduct (U.S. Route 30) over E.J.B.E. R.R. was built in 1925 as 13 span reinforced concrete T-beam and deck plate girder superstructure to carry double track loading from the Chicago and Joliet Electric Railway and two outside traffic lanes. The railway was abandoned prior to resurfacing in 1941. In 1952 the structure was widened and lengthened by adding three span continuous R.C. deck girder to the east. The substructure is supported on solid & conc. column piers, and column supported abutments with retaining walls on spread footings. The back to back abutment length is 833.52' and 51' 6" out to out deck.  
 Structure No. 099-0104 Salvage: None Maintain two way traffic during stage construction.

**CURVE C 2**

PC. 146+95.65  
 PI. 148+11.15  
 PT. 149+24.68  
 $\Delta$  18°-19'-20"  
 $D$  8°-00'-00"  
 $R$  716.20'  
 $T$  115.50'  
 $L$  229.03'  
 $SE$  0.030%

SE Transition 225'  
 Transition STA. 145+45.65 to STA. 147+70.65  
 FULL SUPER STA. 147+70.65 to STA. 148+49.68  
 Transition STA. 148+49.68 to STA. 150+85.09



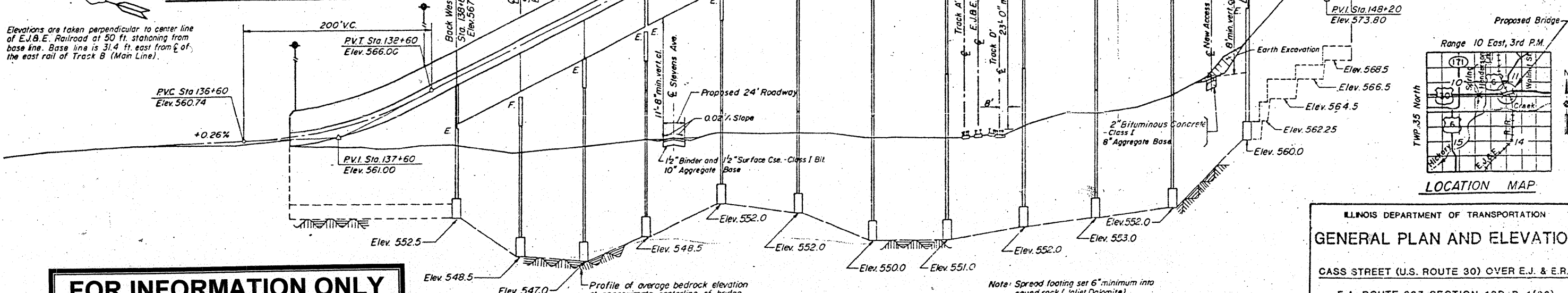
**CURVE C 1**

PC. 135+88.77  
 PI. 137+35.89  
 PT. 138+80.71  
 $\Delta$  17°-30'-58"  
 $D$  6°-00"  
 $R$  954.96'  
 $T$  147.12'  
 $L$  291.94'  
 $SE$  0.025%

SE Transition 200'  
 Transition STA. 134+52.44 to STA. 136+55.44  
 FULL SUPER STA. 136+55.44 to STA. 138+14.04  
 Transition STA. 138+14.04 to STA. 140+14.04

Track	Station	Elevation	Station	Elevation	Station	Elevation
Track D' (Spur)	561	561.72	561.72	561.72	561.72	561.72
	561	561.72	561.72	561.72	561.72	561.72
	561	561.72	561.72	561.72	561.72	561.72
	561	561.72	561.72	561.72	561.72	561.72
	561	561.72	561.72	561.72	561.72	561.72
Track D	561	561.97	561.92	561.78	561.70	561.42
	561	561.97	561.92	561.78	561.70	561.42
	561	561.97	561.92	561.78	561.70	561.42
	561	561.97	561.92	561.78	561.70	561.42
	561	561.97	561.92	561.78	561.70	561.42
Track C	561	561.87	561.82	561.66	561.51	561.33
	561	561.87	561.82	561.66	561.51	561.33
	561	561.87	561.82	561.66	561.51	561.33
	561	561.87	561.82	561.66	561.51	561.33
	561	561.87	561.82	561.66	561.51	561.33
Track B (Main Line)	561	561.87	561.80	561.70	561.55	561.47
	561	561.87	561.80	561.70	561.55	561.47
	561	561.87	561.80	561.70	561.55	561.47
	561	561.87	561.80	561.70	561.55	561.47
	561	561.87	561.80	561.70	561.55	561.47
Track A	561	561.90	561.82	561.72	561.58	561.43
	561	561.90	561.82	561.72	561.58	561.43
	561	561.90	561.82	561.72	561.58	561.43
	561	561.90	561.82	561.72	561.58	561.43
	561	561.90	561.82	561.72	561.58	561.43
Track A' (Spur)	561	561.47	561.43	561.33	561.22	561.12
	561	561.47	561.43	561.33	561.22	561.12
	561	561.47	561.43	561.33	561.22	561.12
	561	561.47	561.43	561.33	561.22	561.12
	561	561.47	561.43	561.33	561.22	561.12

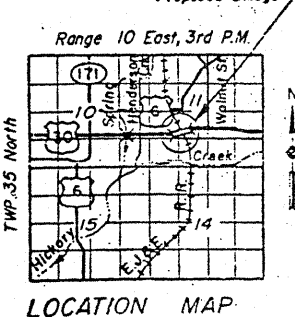
**PROFILES OF TOP OF E.J.B.E. TRACKS**



**Notes.**

Benchmark: N.E. corner concrete base of stop light at S.W. corner U.S. Rte. 30 and Walnut St. U.S.G.S Elevation 582.42

The information shown on this drawing concerning type and location of utilities is not guaranteed to be accurate or all inclusive. The contractor is responsible for making his own determinations as to the type and location of underground and other utilities as may be necessary to avoid damage thereto.



**FOR INFORMATION ONLY**

**ELEVATION**  
 Note: Vertical & horizontal scale not the same.

**SHEET NO. 1 OF 9 SHEETS**

ILLINOIS DEPARTMENT OF TRANSPORTATION  
**GENERAL PLAN AND ELEVATION**  
 CASS STREET (U.S. ROUTE 30) OVER E.J. & E.R.R.  
 F.A. ROUTE 607 SECTION 13D-R-1(82)  
 WILL COUNTY