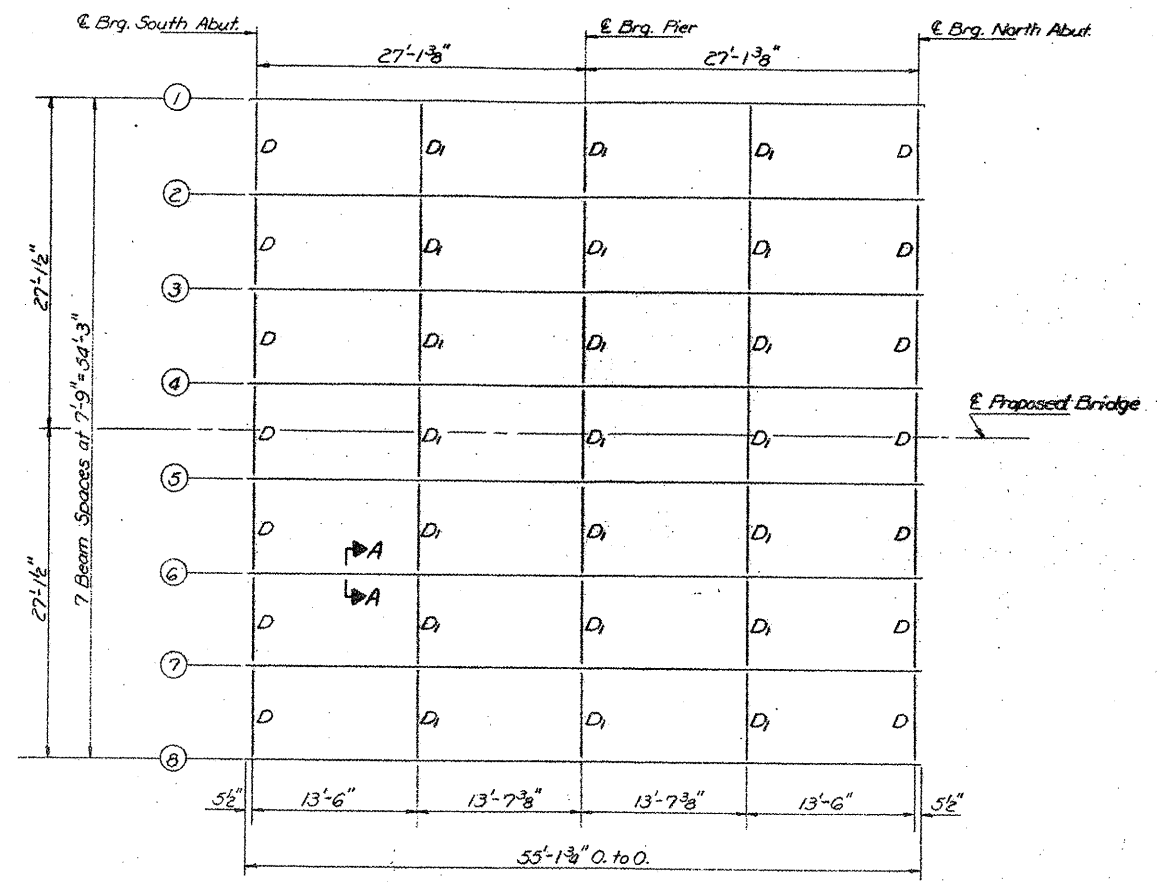
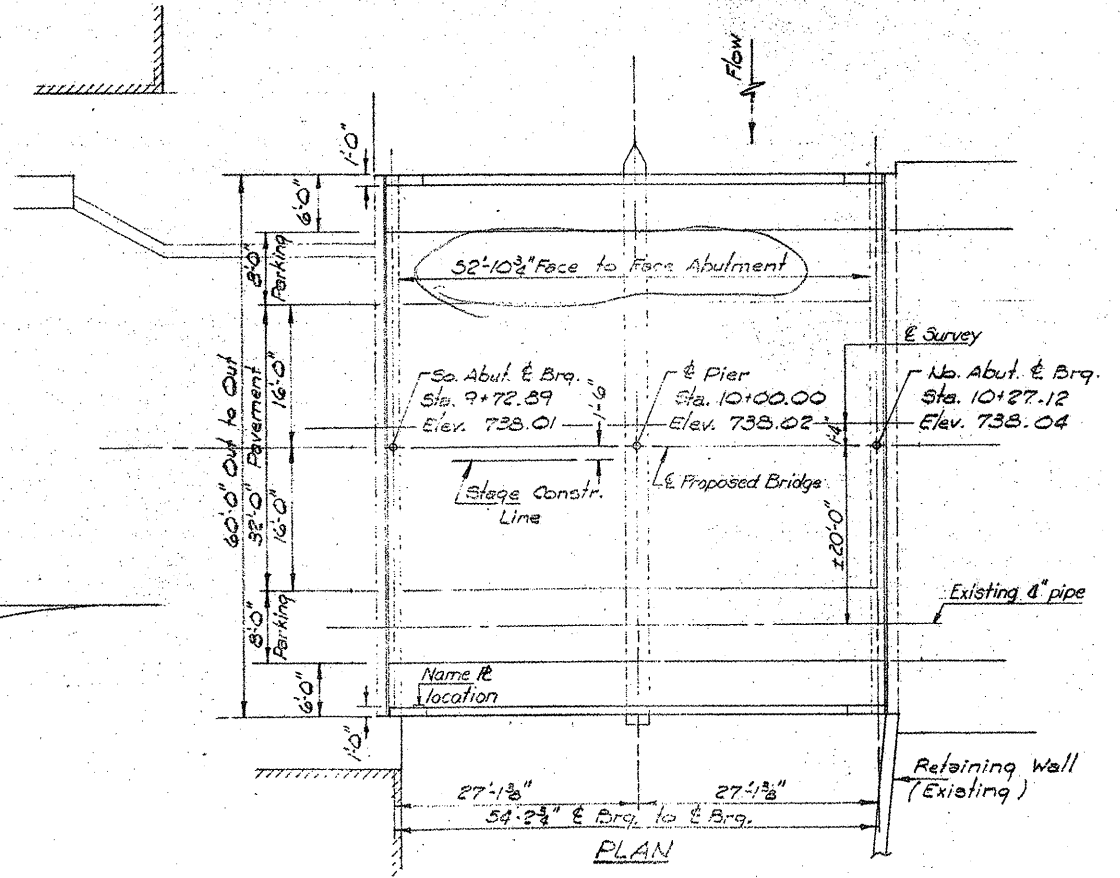
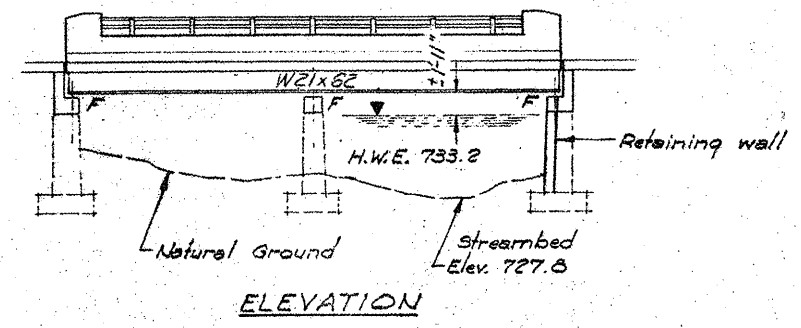


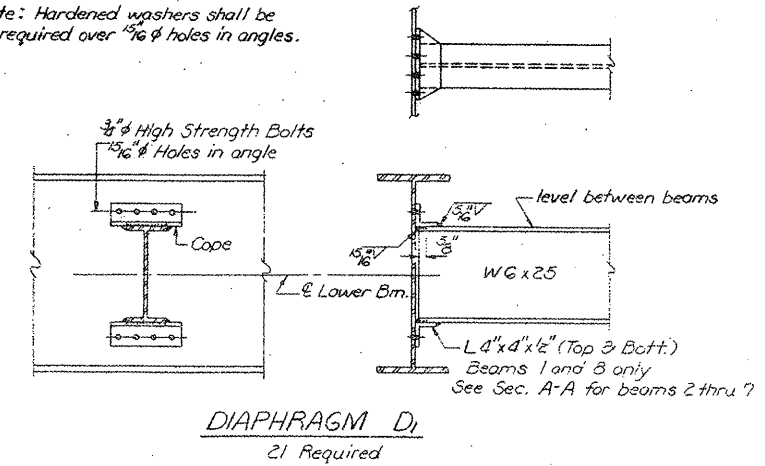
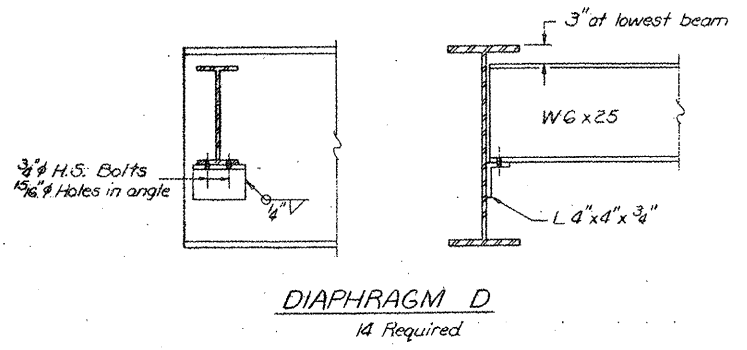
★ PAGE 18 WAS DELETED ★

ROUTE VARIOUS	SECTION 2008-053 BP	COUNTY VARIOUS	TOTAL SHEETS 54	SHEET NUMBER 19
------------------	------------------------	-------------------	--------------------	--------------------

CONTRACT NO. 60F04



Note: Hardened washers shall be required over 1/16" φ holes in angles.



SHEET 1 OF 1

**LOCATION NO. 1**  
**EXIST. BRIDGE PLANS**  
**IL 31 OVER CRYSTAL LAKE**  
**OVERFLOW SN 056-0015**