

STATE OF ILLINOIS
DEPARTMENT OF TRANSPORTATION

DIVISION OF HIGHWAYS

PROPOSED
HIGHWAY PLANS

F.A.P. 330 (US 12 /45)
SECTION 465 X-RS-2
PROSPECT AVENUE TO WALNUT AVENUE
RESURFACING (3P)
PROJECT: *ESP-0330(054)*
COOK COUNTY
C-91-055-09

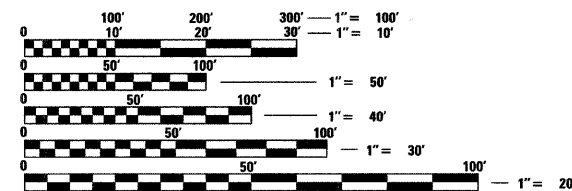
F.A.P. RTE.	SECTION	COUNTY	TOTAL SHEETS	SHEET NO.
330	465 X-RS-2	COOK	18	1
FED. ROAD DIST. NO. 1	ILLINOIS CONTRACT NO. 60F24			

FOR INDEX OF SHEETS, SEE SHEET NO. 2

THIS IMPROVEMENT IS LOCATED
WITHIN THE CITY OF DES PLAINES

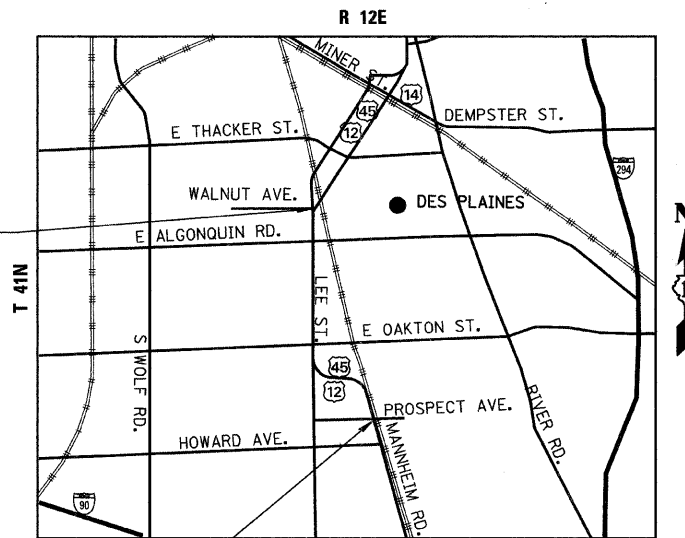
TRAFFIC DATA

2005 ADT - 21,300
POSTED SPEED LIMIT - 30 MPH



FULL SIZE PLANS HAVE BEEN PREPARED USING STANDARD ENGINEERING SCALES. REDUCED SIZED PLANS WILL NOT CONFORM TO STANDARD SCALES. IN MAKING MEASUREMENTS ON REDUCED PLANS, THE ABOVE SCALES MAY BE USED.

J.U.L.I.E.
JOINT UTILITY LOCATION INFORMATION FOR EXCAVATION
1-800-892-0123
OR 811



END PROJECT
STA. 66 + 30.00

BEGIN PROJECT
STA. 1 + 75.00

MAINE TOWNSHIP
LOCATION MAP
1" = 2000'
GROSS AND NET LENGTH OF PROJECT = 6455 FT = 1.22 MI.

DISTRICT 1 DESIGN PLAN PREPARATION ENGINEER: K. ENG (847)705-4247

CONTRACT NO. 60F24

Ciorba Group, Inc.
DESIGN FIRM
REGISTRATION NUMBER
184-001016
CONSULTING ENGINEERS
SUITE 402, 5507 NORTH CUMBERLAND AVE
CHICAGO, ILLINOIS 60656 ☎ (773) 775-4009

MATTHEW J. LEHN
082-057150
LICENSED
PROFESSIONAL
ENGINEER
OF
ILLINOIS
Matthew J. Lehn
DATE: 2/3/2009
SEAL EXPIRES: 11/30/2009

STATE OF ILLINOIS
DEPARTMENT OF TRANSPORTATION
DIVISION OF HIGHWAYS

SUBMITTED FEBRUARY 3, 20 09
Diana M. O'Keefe
DEPUTY DIRECTOR OF HIGHWAYS, REGION ENGINEER
March 27, 20 09
Charles G. Ingersoll
ENGINEER OF DESIGN AND ENVIRONMENT
March 27, 20 09
Christine M. Reed
DIRECTOR OF HIGHWAYS, CHIEF ENGINEER

PRINTED BY THE AUTHORITY
OF THE STATE OF ILLINOIS