

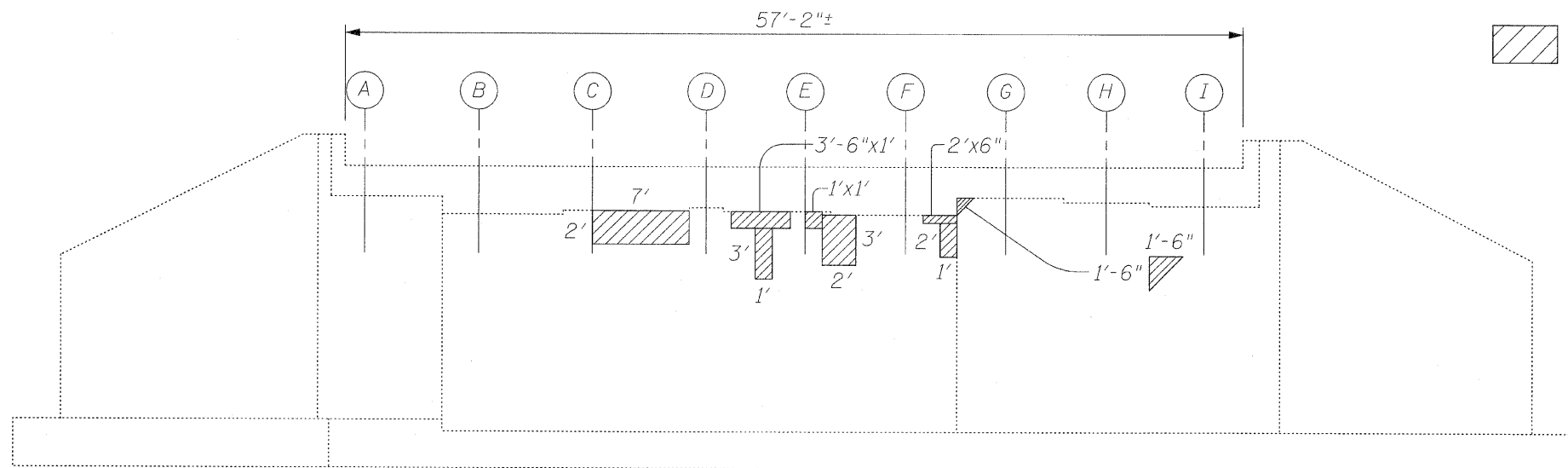
ELEVATION
WEST ABUTMENT
(Looking West)

BILL OF MATERIAL

ITEM	UNIT	QUANTITY
Structural Repair of Concrete (Depth Equal to or Less Than 5 In.)	Sq. Ft.	48

LEGEND:

Structural Repair of Concrete
(Depth Equal to or Less Than 5 In.)



ELEVATION
EAST ABUTMENT
(Looking East)

FILE NAME = west_east_abutment.dgn
PLOT DATE = 2/26/2009

2-26-09



CHRISTIAN-ROGE & ASSOCIATES, INC.
ENGINEERS-PLANNERS-SURVEYORS
211 WEST WACKER DRIVE
CHICAGO, ILLINOIS 60606
PHONE: (312)372-2023 FAX: (312)372-5274

DESIGNED - B.N.S./J.C.N.	REVISED -
DRAWN - F.M.	REVISED -
CHECKED - B.N.S./J.C.N.	REVISED -
DATE - FEBRUARY, 2009	REVISED -

STATE OF ILLINOIS
DEPARTMENT OF TRANSPORTATION

ABUTMENTS
U.S. RTE. 30 OVER BLACKBERRY CREEK S.N. 047-0029

SCALE: SHEET NO. 54 OF 54 SHEETS STA. TO STA.

F.A.P. RTE.	SECTION	COUNTY	TOTAL SHEETS	SHEET NO.
349	10 RS-6	KANE/KENDALL	29	16-B
CONTRACT NO. 60F27				
FED. ROAD DIST. NO. ILLINOIS FED. AID PROJECT				