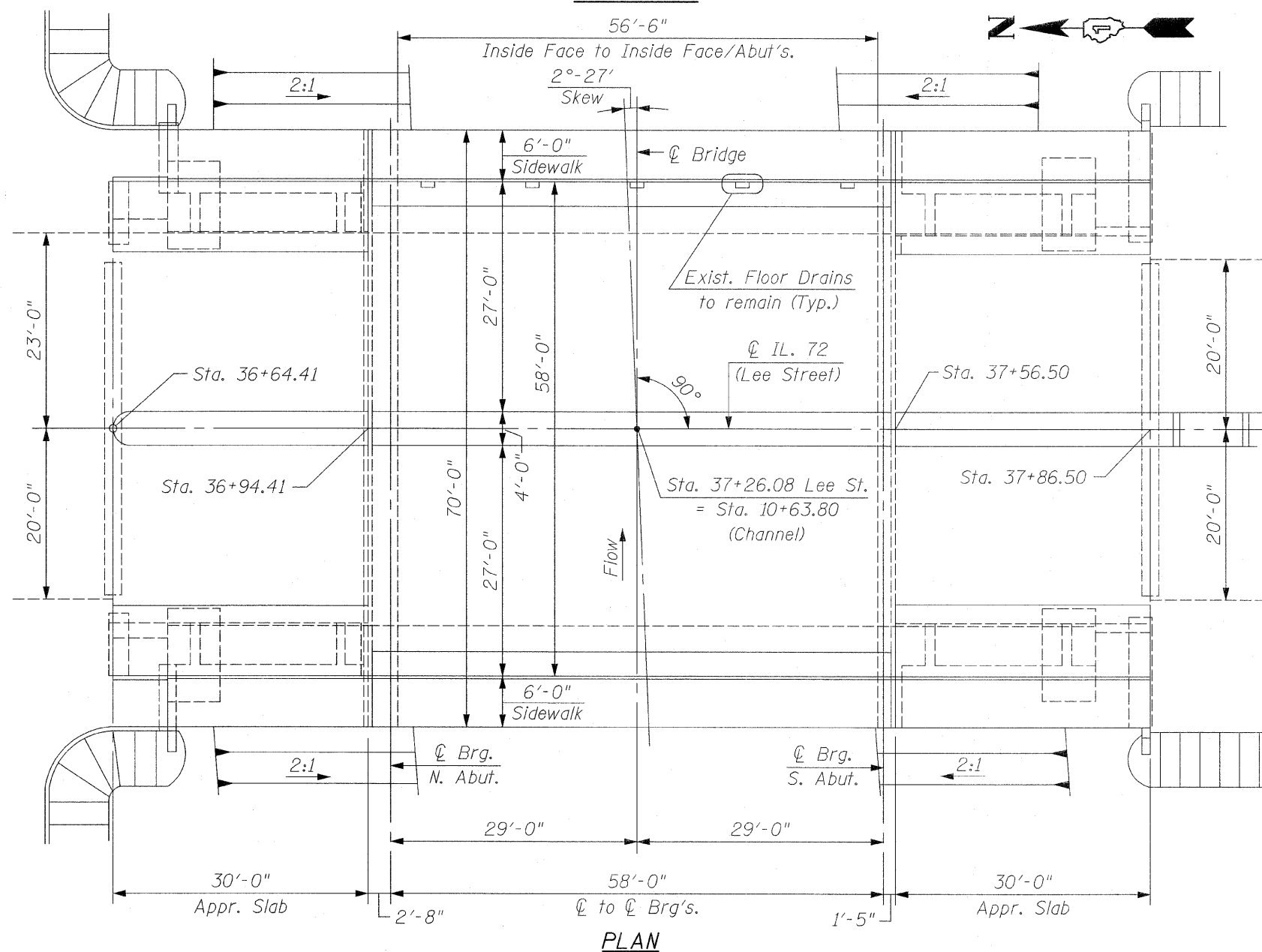


**NORTH ABUTMENT**

**ELEVATION**

**SOUTH ABUTMENT**



**PLAN**

**GENERAL NOTES:**  
 Plan dimensions and details relative to existing plans are subject to Nominal Construction variations. The Contractor shall field verify existing dimensions and details affecting new construction and make necessary approved adjustments prior to construction or ordering of materials. Such variations shall not be cause for additional compensation for a change in scope of the work, however, the Contractor will be paid for the quantity actually furnished at the unit price bid for the work.

Joint Openings Shall be adjusted according to Article 520.04 of the Standard Specifications when the Deck is poured at an ambient temperature other than 50°F.

Existing Reinforcement Bars extending into the removal areas shall be cleaned, straightened and incorporated into the New Construction. Any Reinforcement Bars that are damaged during Concrete removal shall be replaced with an approved Bar Splicer or Anchorage System. Cost is included with Concrete Removal.

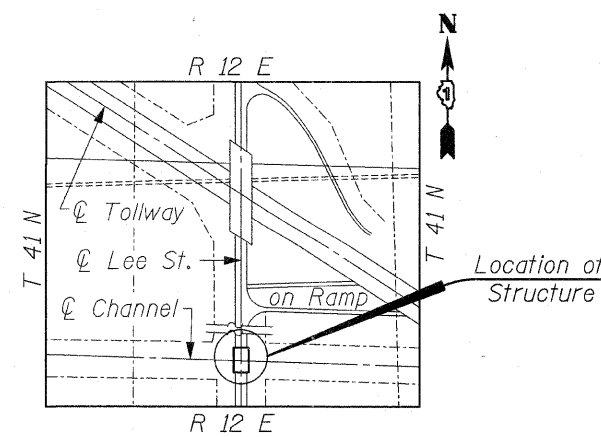
The Contractor shall use extreme care during Concrete removal so as not to damage the P.P.C. I-Beams. Any damage done to the P.P.C. I-Beams is to be repaired at the Contractor's expense.

Reinforcement Bars shall conform to the requirements of ASTM A-706, Grade 60. See Special Provisions.

Reinforcement Bars designated (E) shall be Epoxy Coated.

**TOTAL BILL OF MATERIAL**

ITEM	UNIT	QUANTITY
Hot-Mix Asphalt Surface Removal (Complete)	Sq. Yd.	347
Bridge Deck Hydro-Scarification, 1/2 Inch	Sq. Yd.	311
Bridge Deck Latex Concrete Overlay, 2 1/4 Inches	Sq. Yd.	311
Bridge Deck Grooving	Sq. Yd.	330
Protective Coat	Sq. Yd.	484
Reinforcement Bars, Epoxy Coated	Pound	8,020
Concrete Removal	Cu. Yd.	47.7
Concrete Superstructure	Cu. Yd.	48.6
Preformed Joint Strip Seal	Foot	140
Bar Splicers	Each	68
Deck Slab Repair (Full Depth, Type II)	Sq. Yd.	12
Structural Repair of Concrete (Depth Greater Than 5 in.)	Sq. Ft.	232
Structural Repair of Concrete (Depth Equal to or Less Than 5 in.)	Sq. Ft.	11



**LOCATION SKETCH**



Bhadresh N. Shah  
 BHADRESH N. SHAH  
 LICENSED STRUCTURAL ENGINEER  
 STATE OF ILLINOIS LIC. No. 081-004476  
 EXPIRES: 11-30-10

FILE NAME = plan\_elevation.dgn  
 PLOT DATE = 3/23/2009

**CHRISTIAN-ROGE & ASSOCIATES, INC.**  
 ENGINEERS-PLANNERS-SURVEYORS  
 211 WEST WACKER DRIVE  
 CHICAGO, ILLINOIS 60606  
 PHONE: (312)372-2023 FAX: (312)372-5274

DESIGNED - B.N.S./J.C.N.  
 DRAWN - F.M.  
 CHECKED - B.N.S./J.C.N.  
 DATE - MARCH, 2009

REVISED -  
 REVISED -  
 REVISED -  
 REVISED -

**STATE OF ILLINOIS  
 DEPARTMENT OF TRANSPORTATION**

**GENERAL PLAN & ELEVATION  
 IL 72 (LEE STREET) OVER WILLOW CREEK S.N. 016-0506**  
 SCALE: SHEET NO. S1 OF S10 SHEETS STA. TO STA.

F.A.I. RTE.	SECTION	COUNTY	TOTAL SHEETS	SHEET NO.
1350	2008-063 RS	COOK	42	22
FED. ROAD DIST. NO.			ILLINOIS FED. AID PROJECT	

CONTRACT NO. 60F40